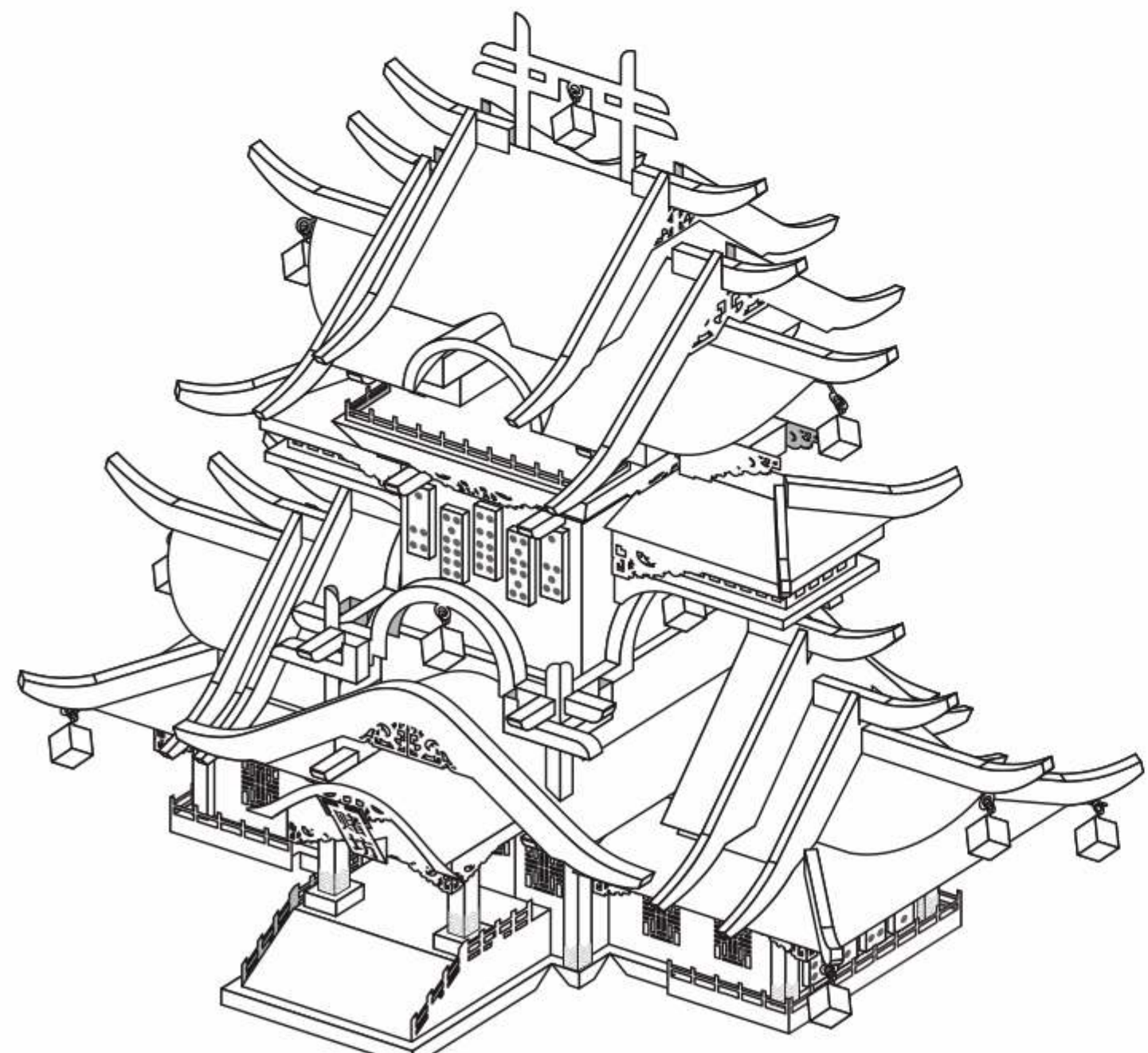


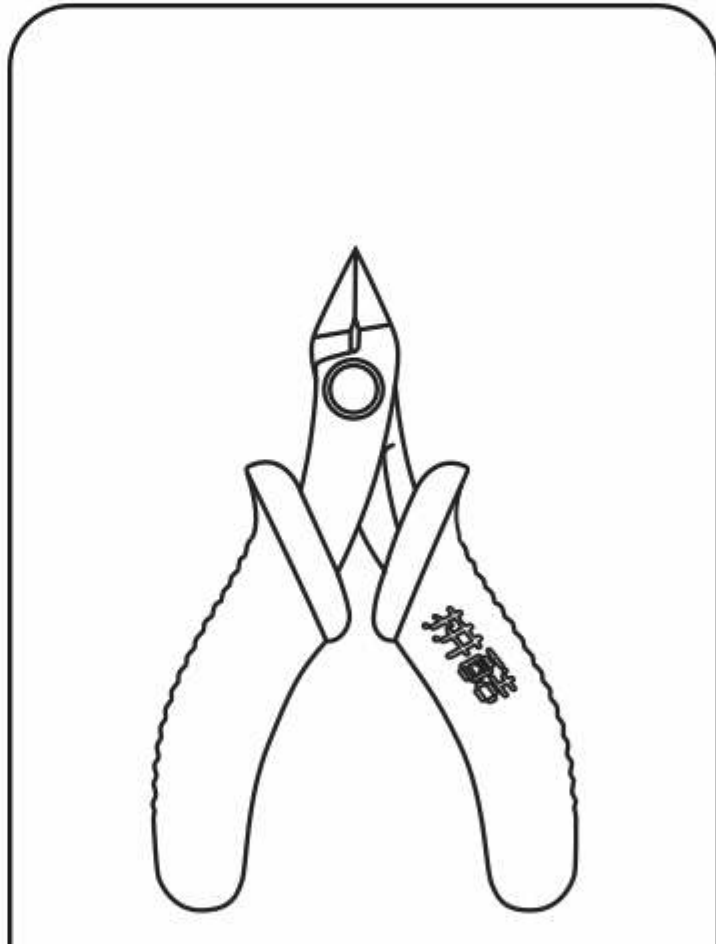
赌坊 THE CASINO P167



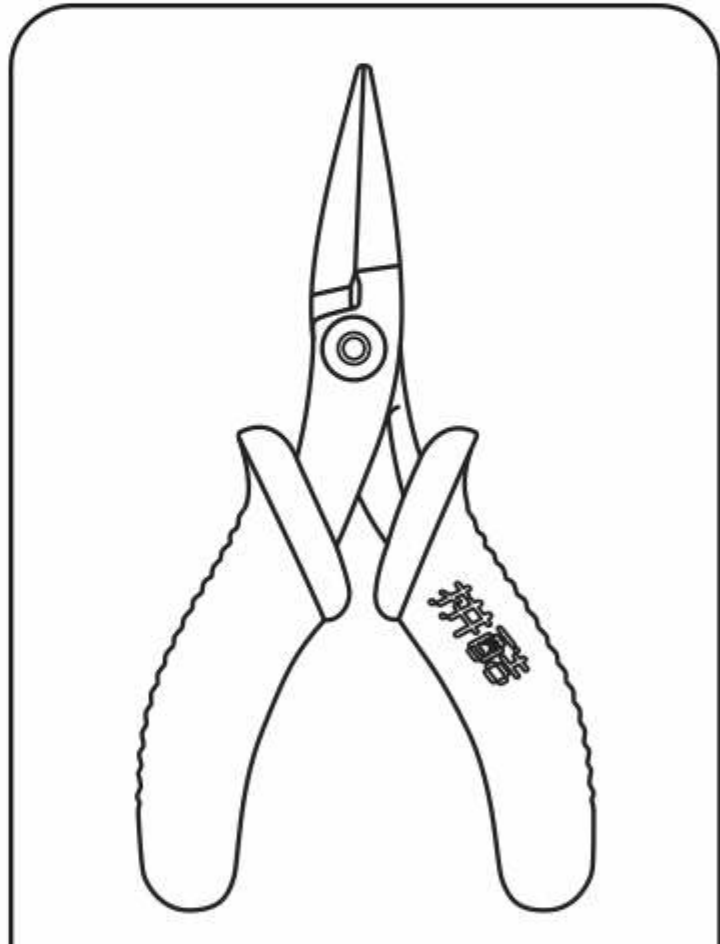
CP-ASSY-P167#-A1-20201030

拼前需知

● 准备工具：



水口钳工具
修剪金属片板件上的零件水口位。



尖嘴钳工具
弯折金属零件上的折叠线和扣点。

建议使用拼酷正品拼装工具（水口钳、尖嘴钳），拼装时更省心、省力，拼装后作品更精细、美观！

⚠ 请小心处理金属边料，以防划伤

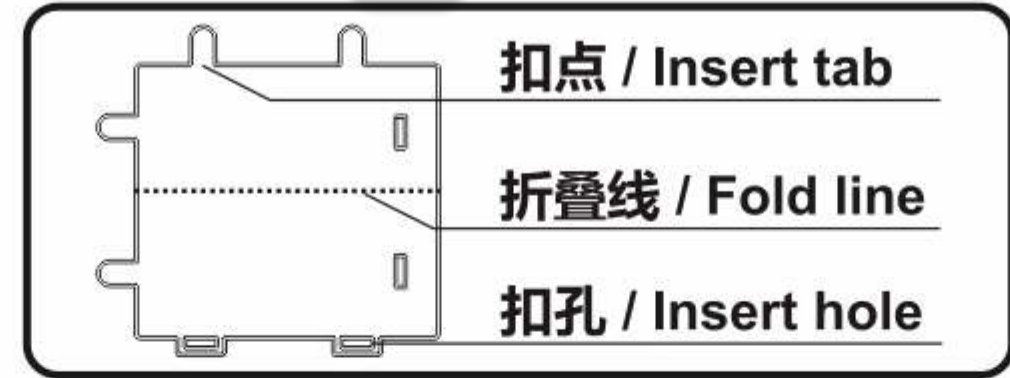
● 拼装方法：

a. 取下零件



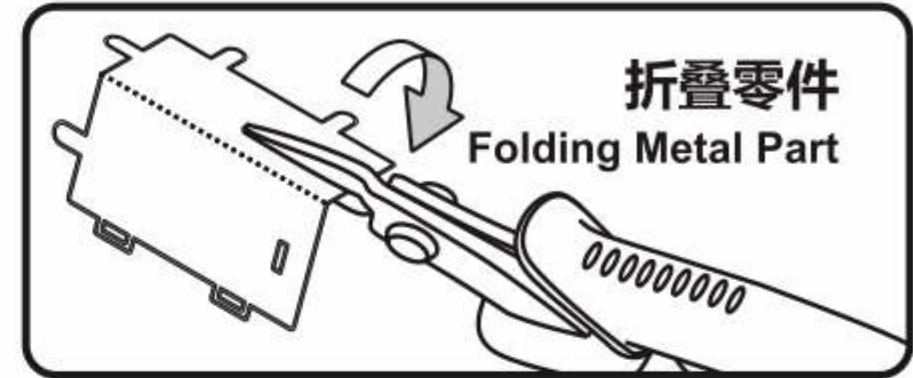
使用水口钳剪断金属零件上的水口，将需要的金属零件从金属片板上取下。

b. 识别零件



识别金属零件上的扣点、折叠线、扣孔的样子。

c. 折叠零件



使用尖嘴钳，参照拼装说明书将金属零件折成形状。

d. 固定零件



● 插入扣孔，平折 90°



● 插入扣孔，旋转 90°

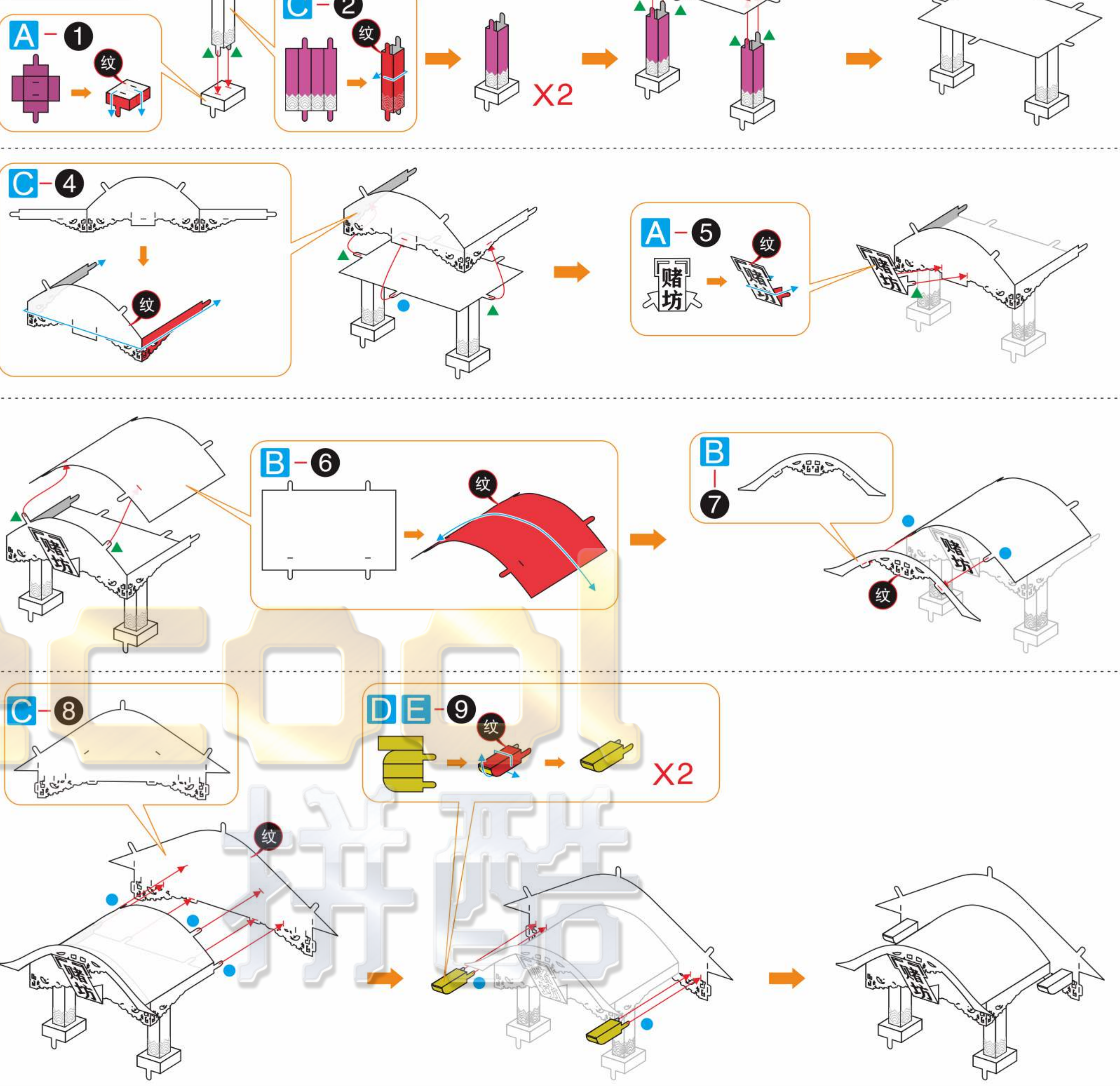
● 注意事项：



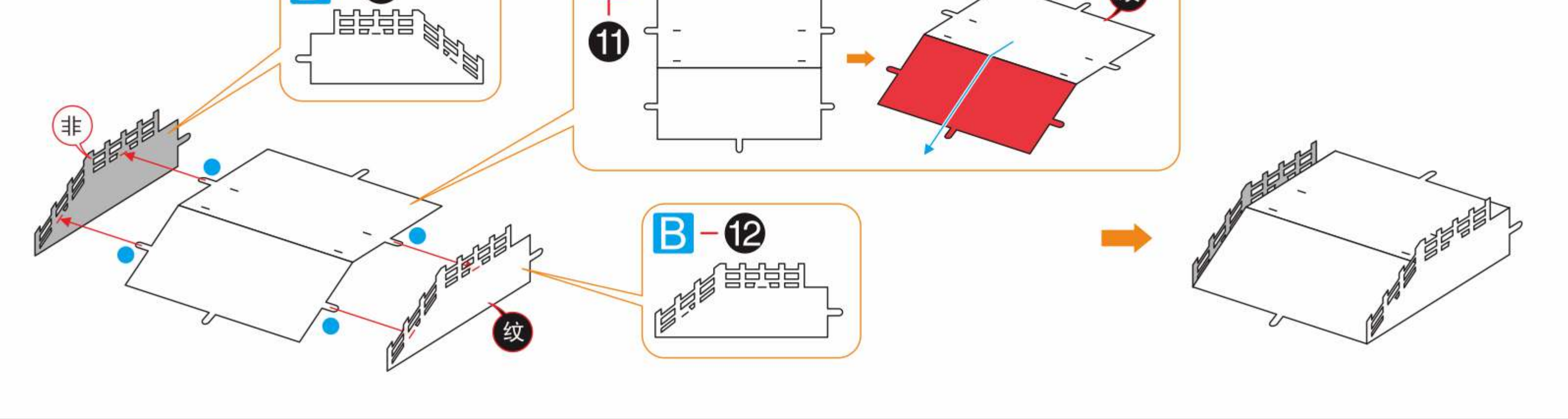
剪金属零件时请剪零件“水口位”，请勿将“扣点”当成“水口位”剪下，每次剪零件时请仅剪当前步骤的零件，切勿一次性将所有零件全部剪下，避免丢失；
当遇到折叠线的零件，请注意金属片的正反面及拼折方向，请按说明书说明的方向，轻剪慢折，最好一次折叠完成，请勿反复折叠，避免零件损坏。

拼装步骤

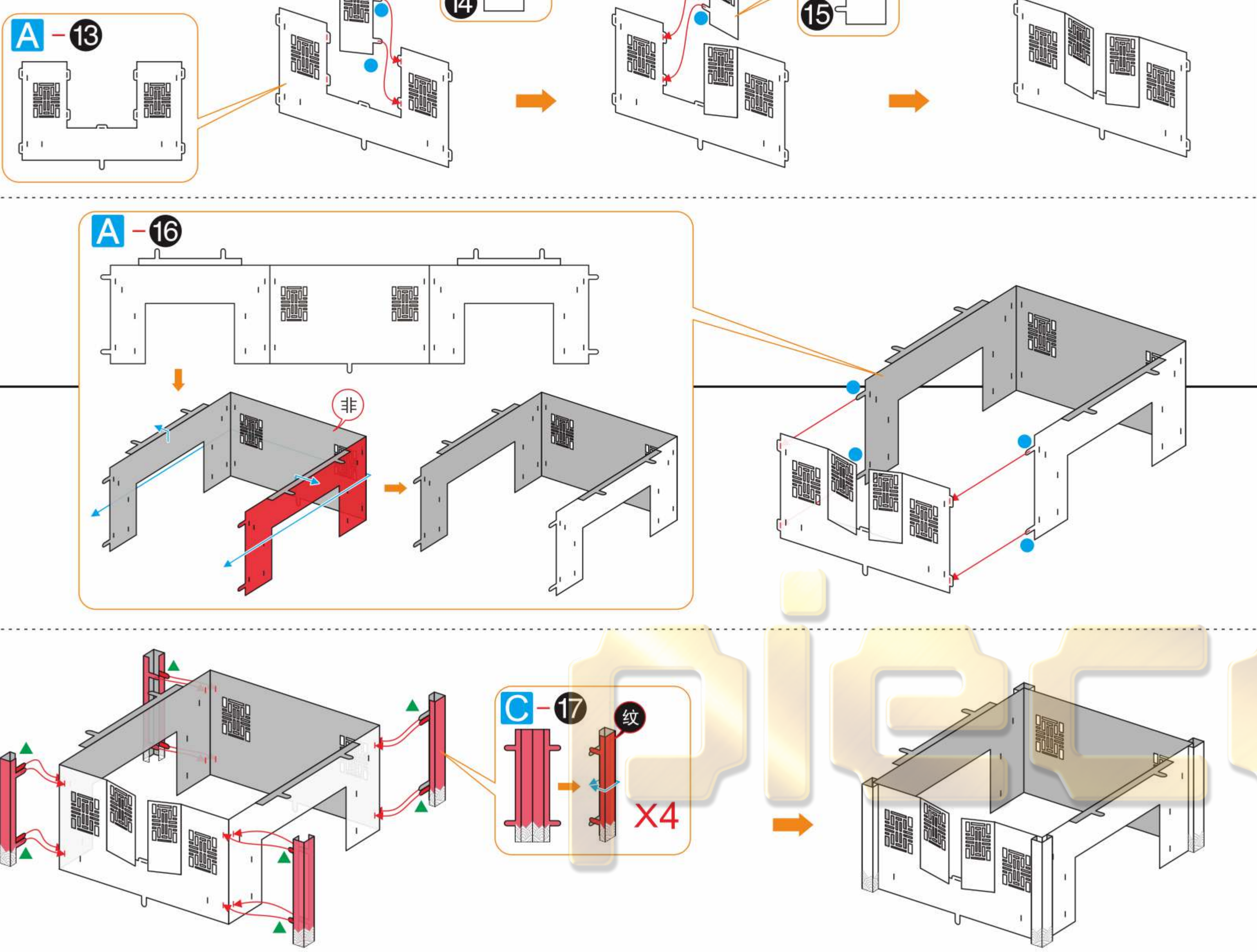
Step 1



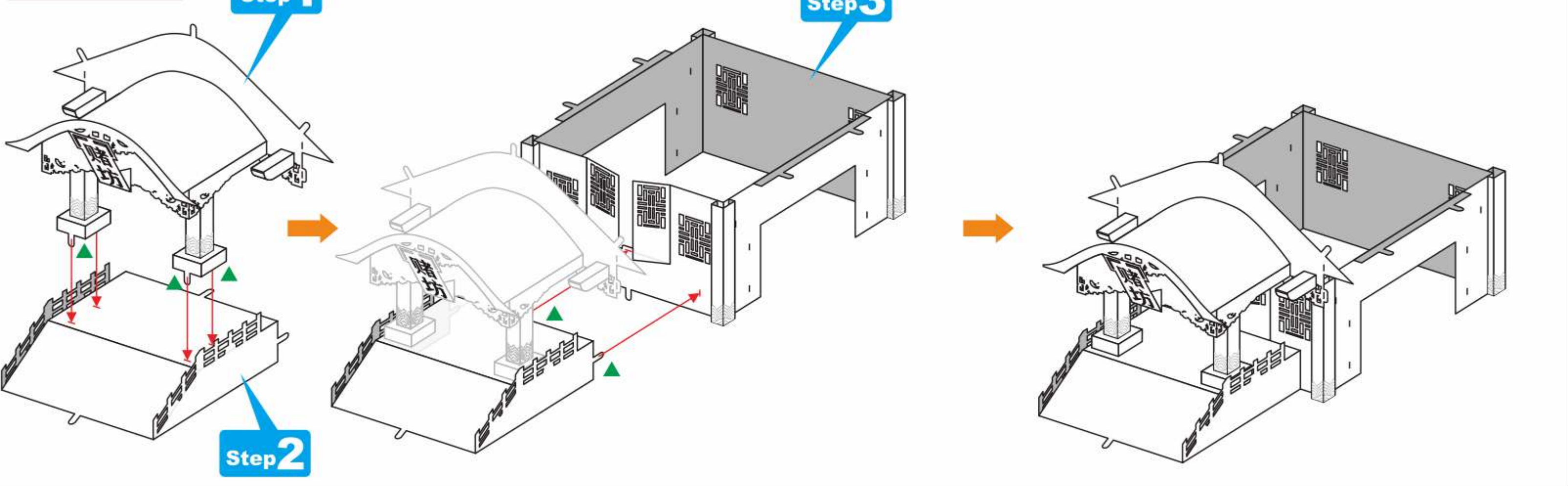
Step 2



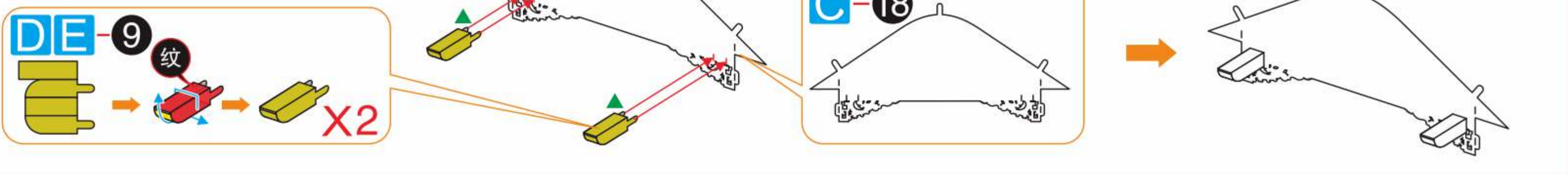
Step 3



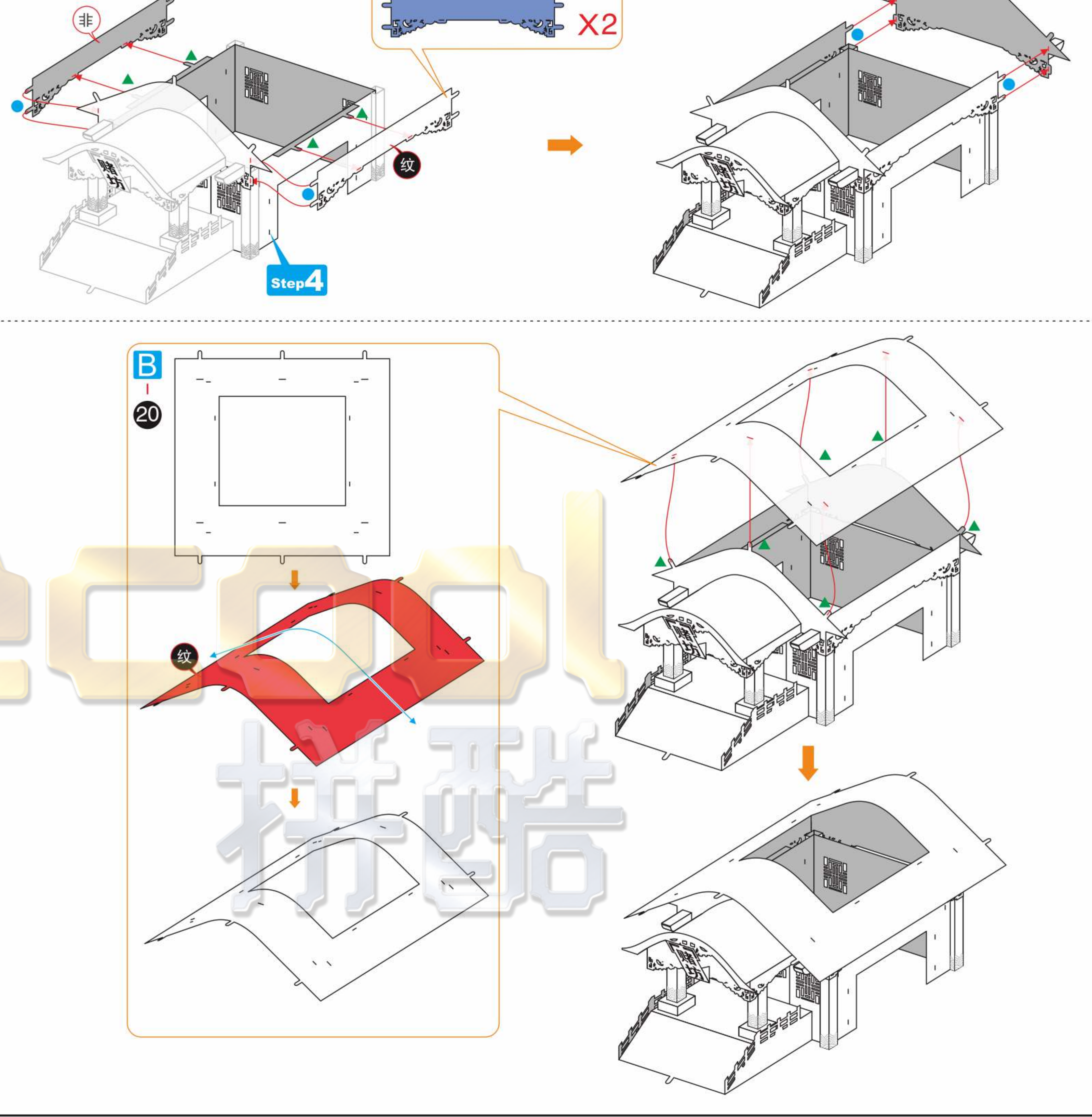
Step 4



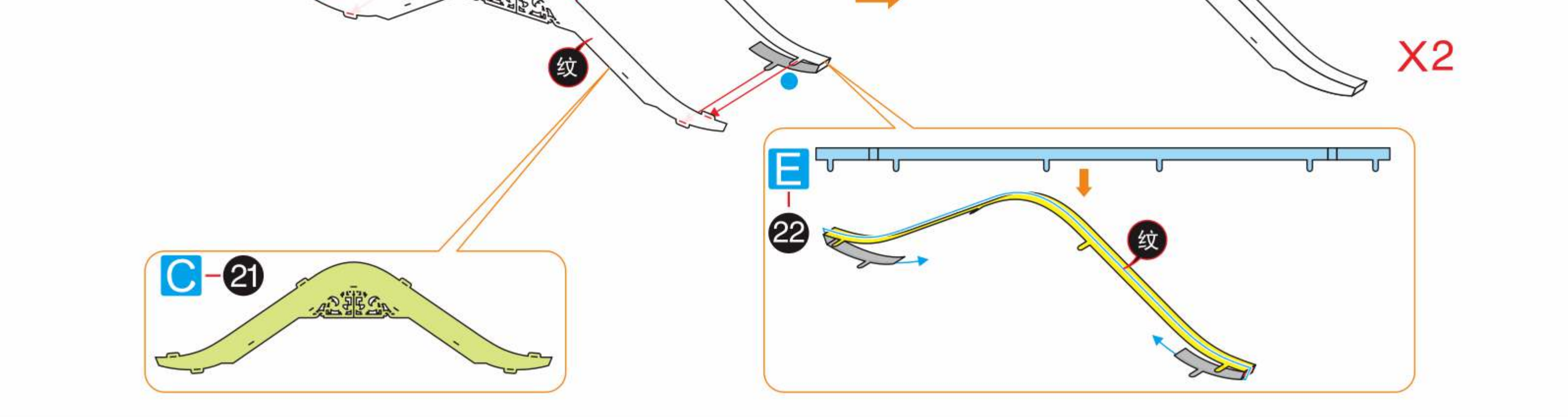
Step 5



Step 6



Step 7



Step 8

Diagram showing the assembly of arches. Part B-23 is shown at the top. Below, a sequence of three diagrams illustrates the connection of arches. At the bottom, four sub-diagrams show the installation of parts B-24 (x2), B-25 (x2), B-26 (x2), and B-27 (x2).

Step 9

Diagram showing the installation of part E-28 (x4) and part C-29 (x4) onto the arch structure.

Step 10

Diagram showing the installation of parts D and E-9 (x8) onto the arch structure.

Step 11

Diagram showing the installation of parts A and D-30 (x4) onto the arch structure.

Step 12

Diagram showing the installation of part A-51 (x2) and the connection of the roof structure, including references to Step 6 and Step 7.

Step 13

Diagram showing the connection of the roof structure, including references to Step 6, Step 7, and Step 11.

Step 14

Diagram showing the installation of parts C-32 (x2), C-34 (x2), and D-33 (x2) onto the roof structure.

Step 18

Diagram showing the installation of parts C-41 (x2), D-42 (x2), and D-43 (x2) onto the roof structure.

Step 15

Diagram showing the installation of parts B-35 (x2) and D-36 (x2) onto the roof structure.

Step 19

Diagram showing the installation of part B-44 (x2) onto the roof structure.

Step 16

Diagram showing the installation of parts D-37 (x2) and D-38 (x2) onto the roof structure.

Step 20

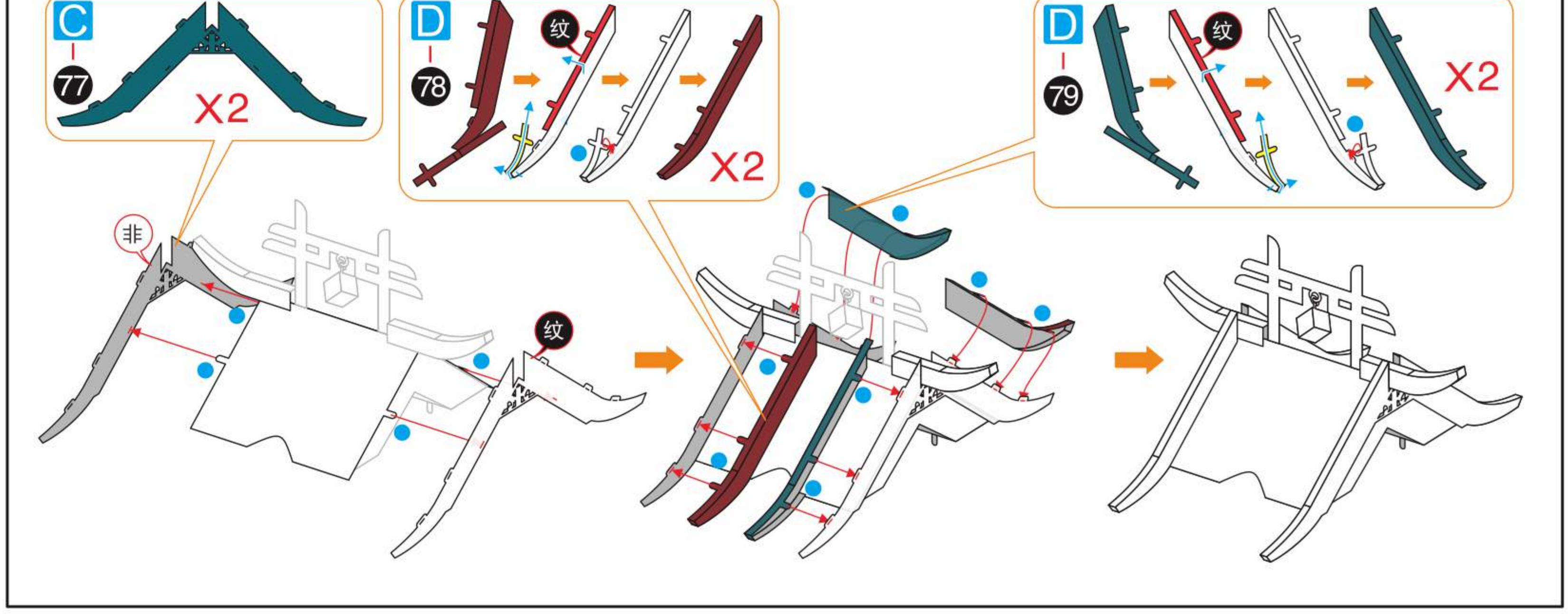
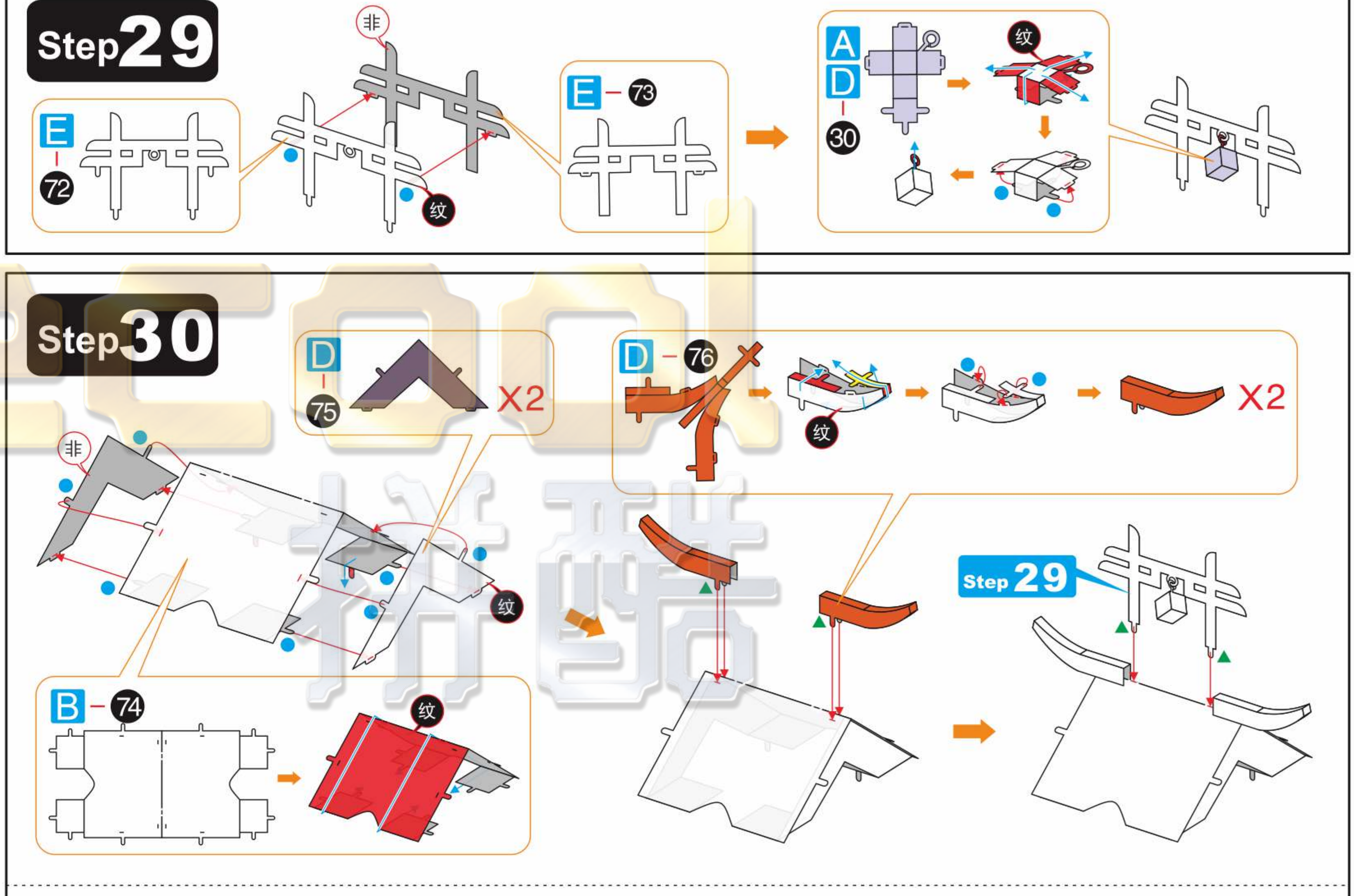
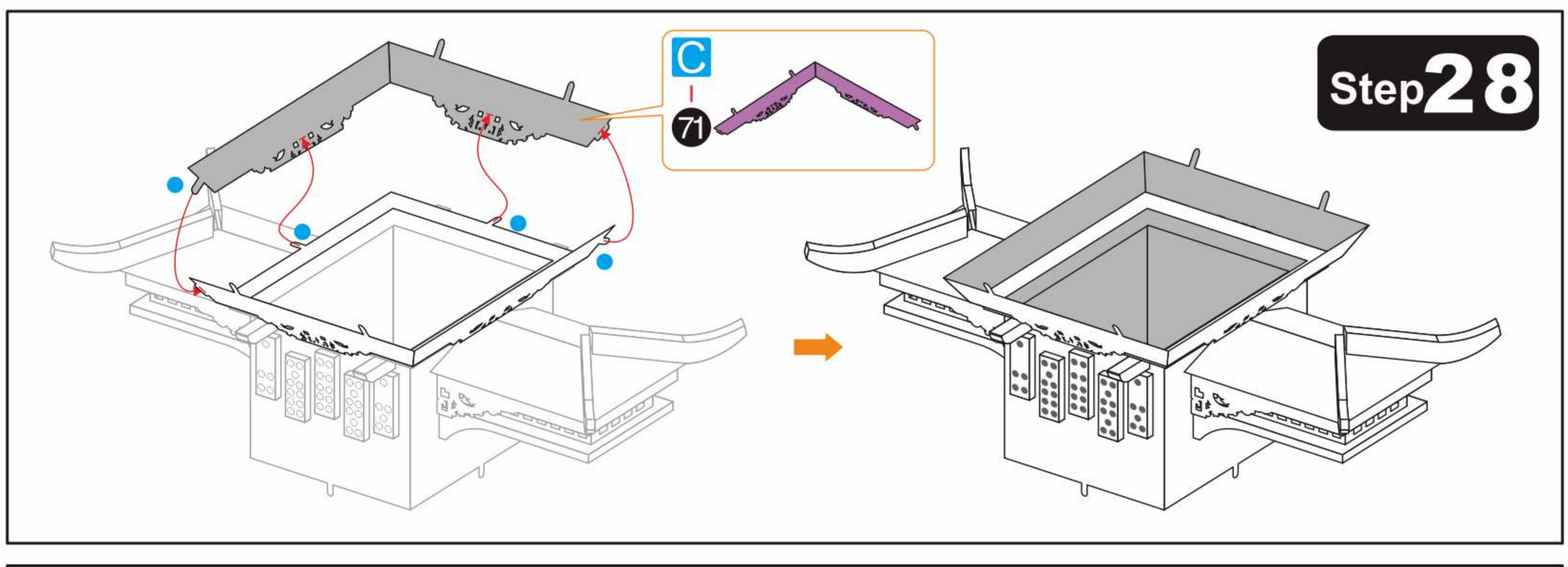
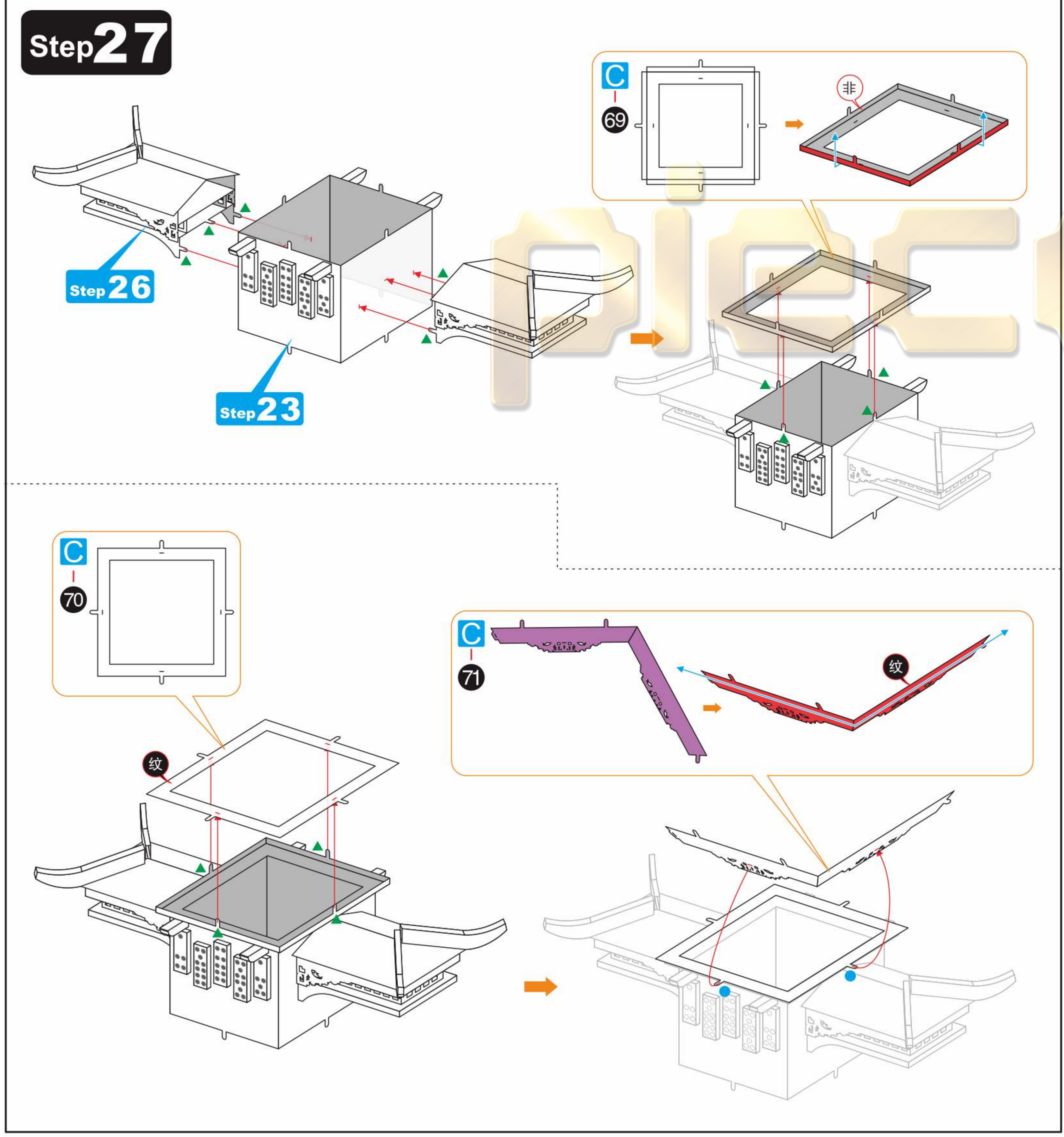
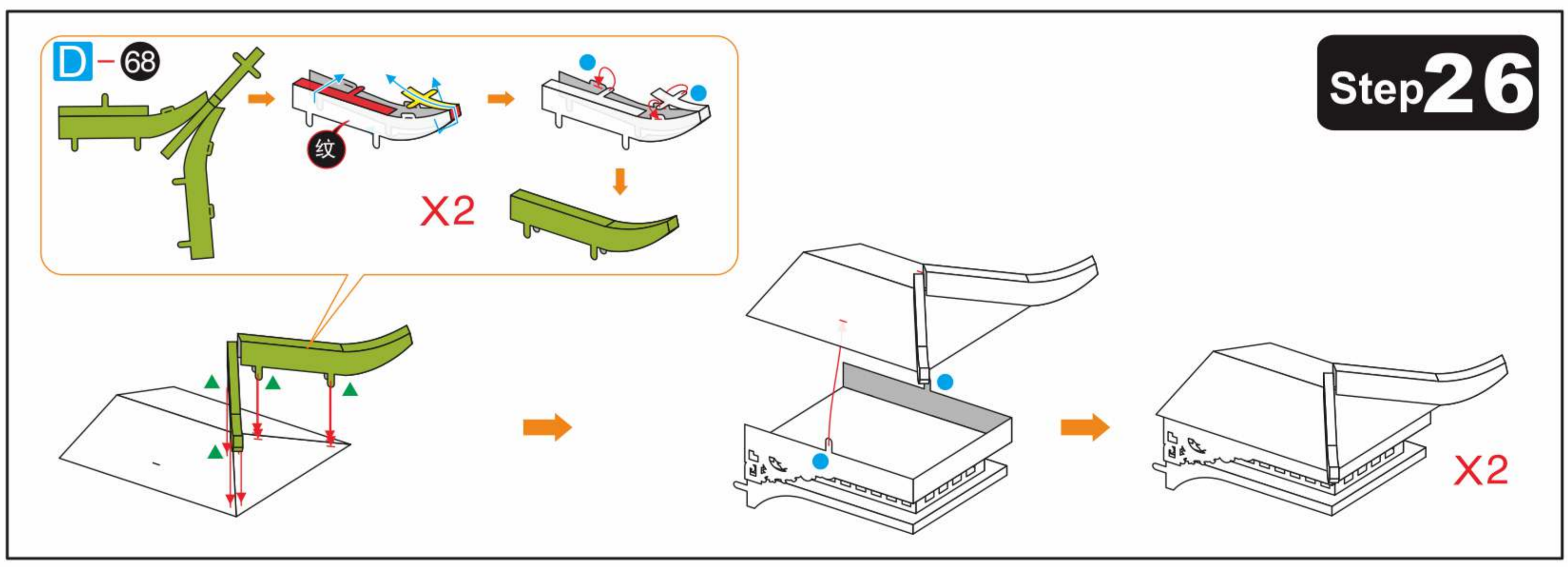
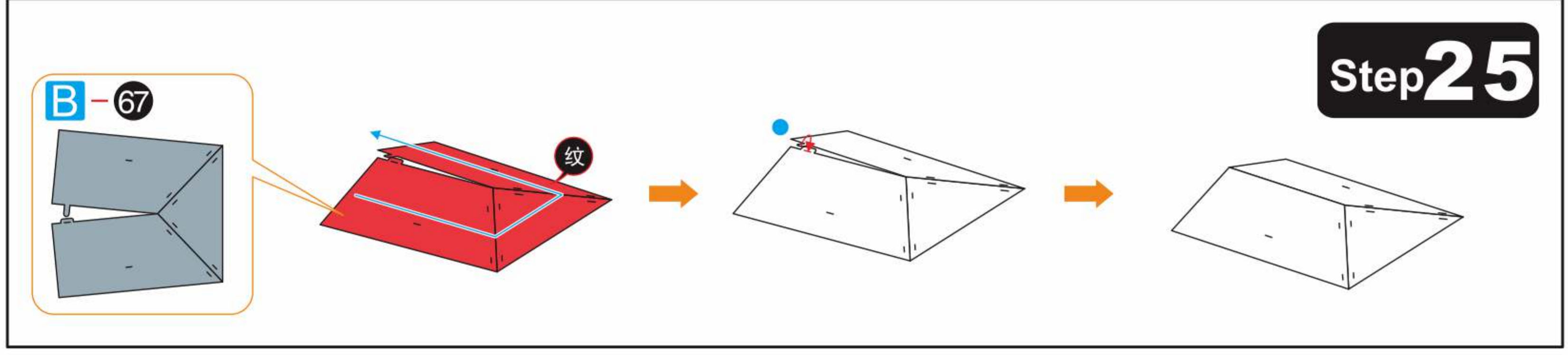
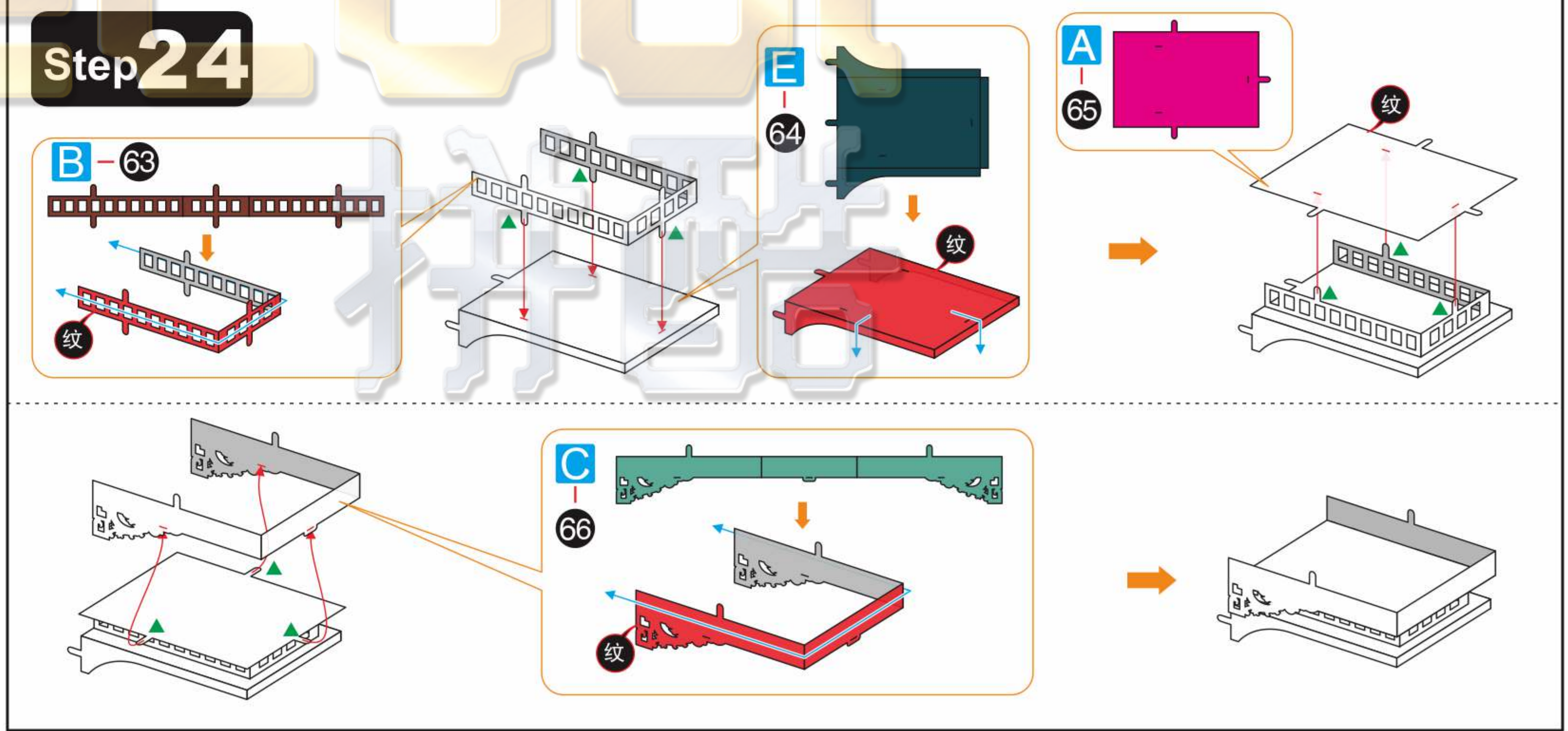
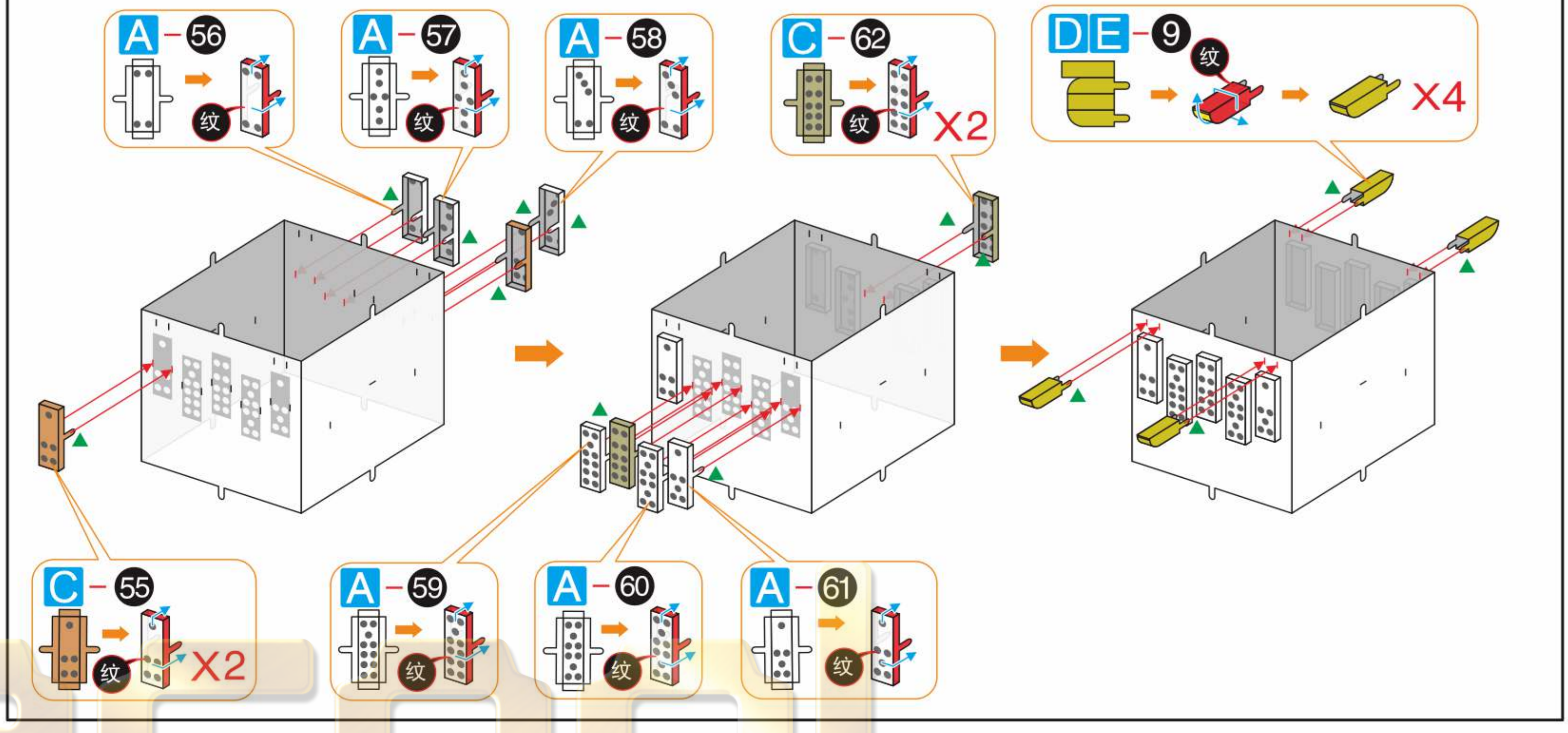
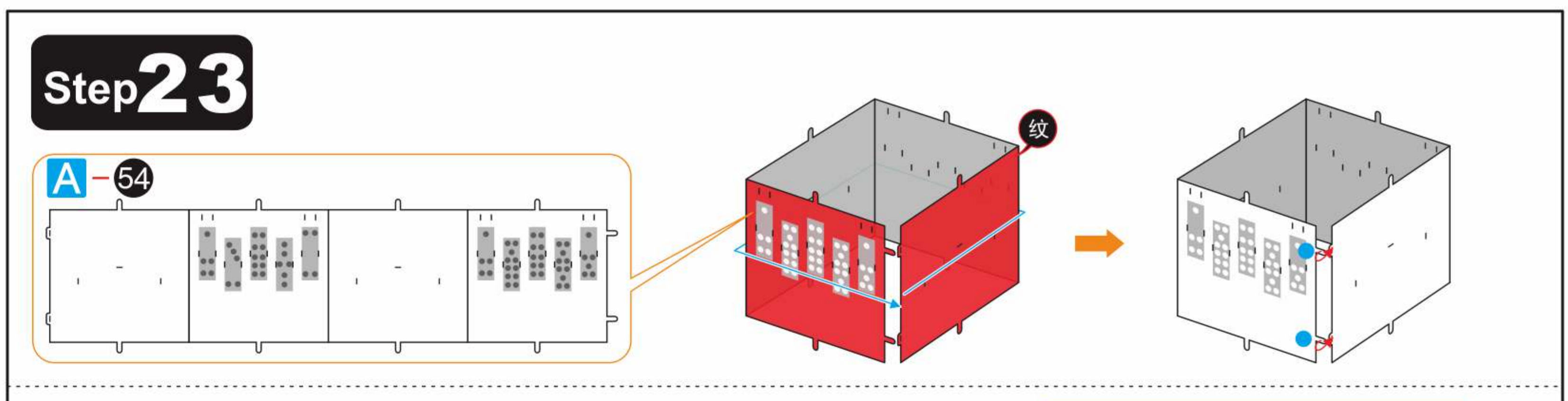
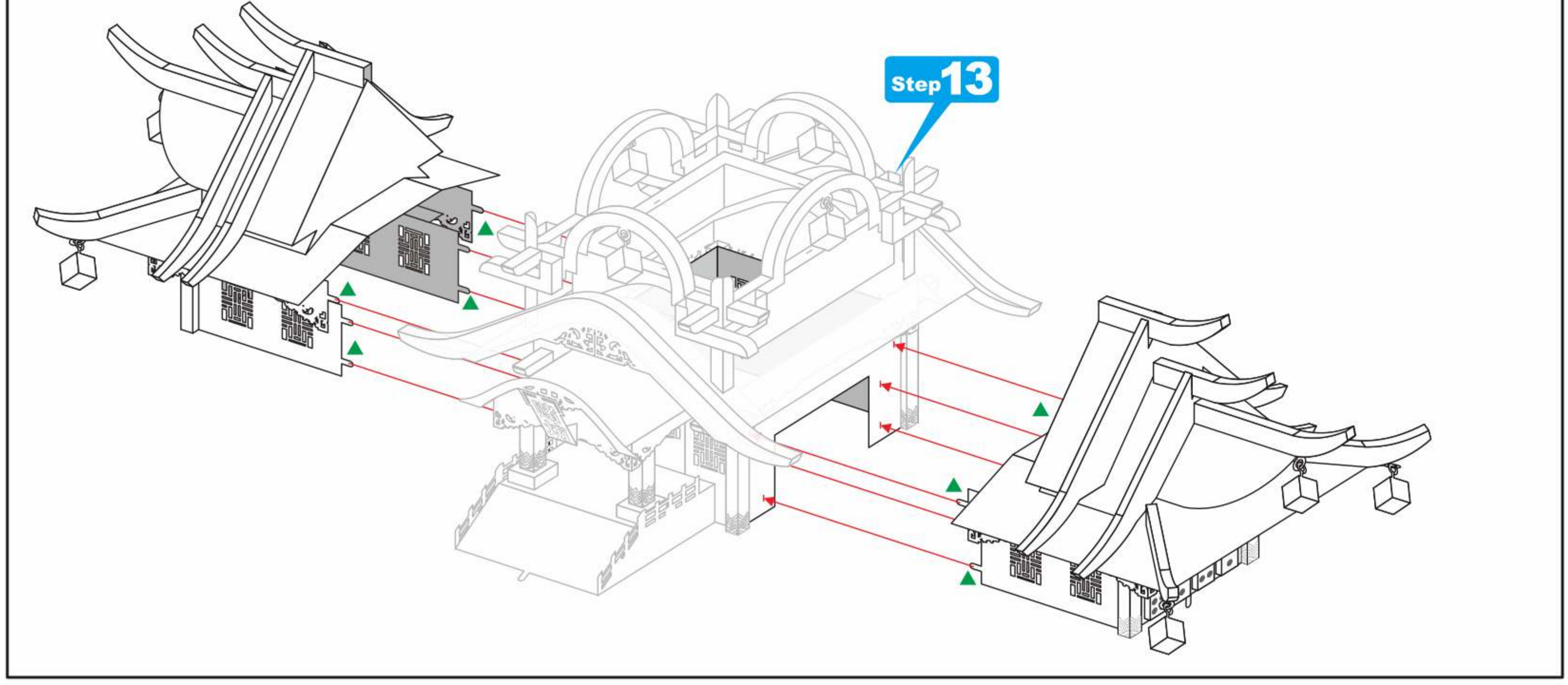
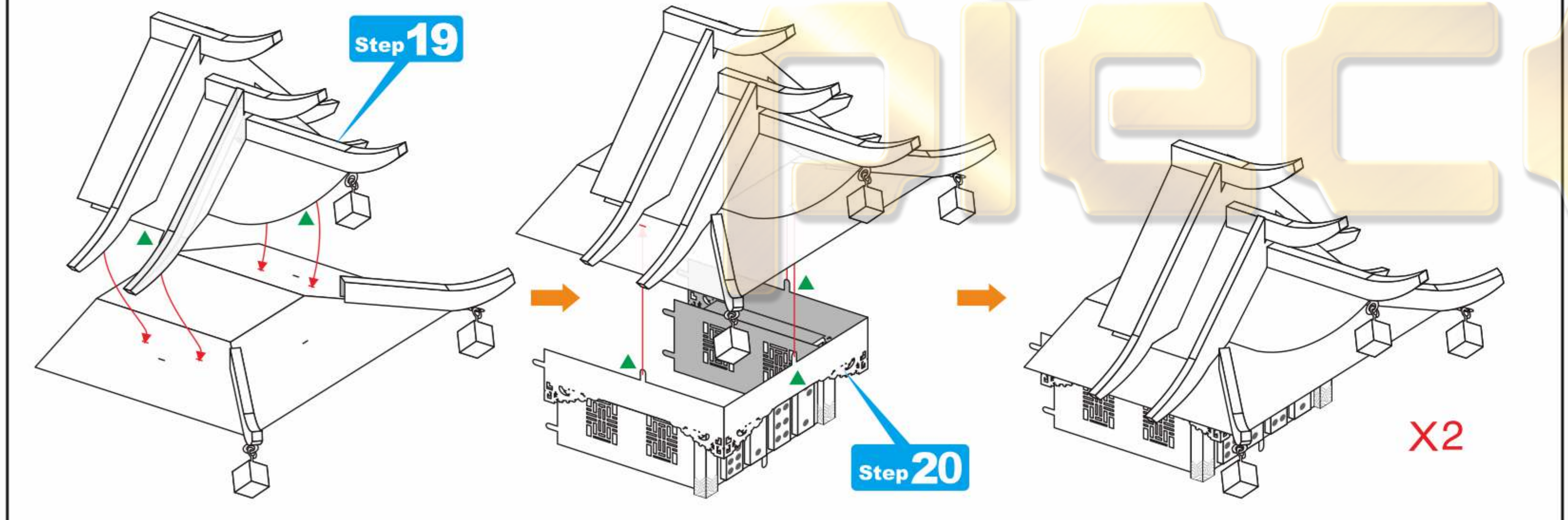
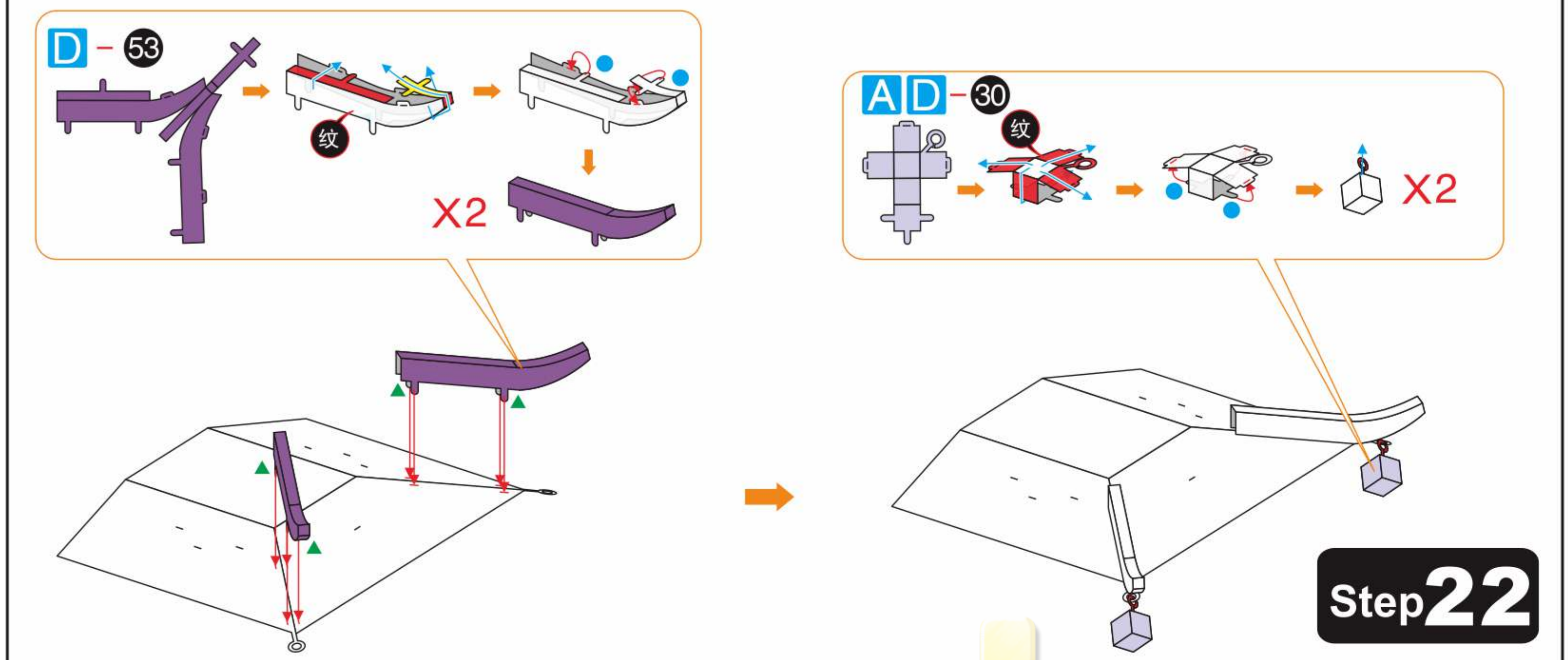
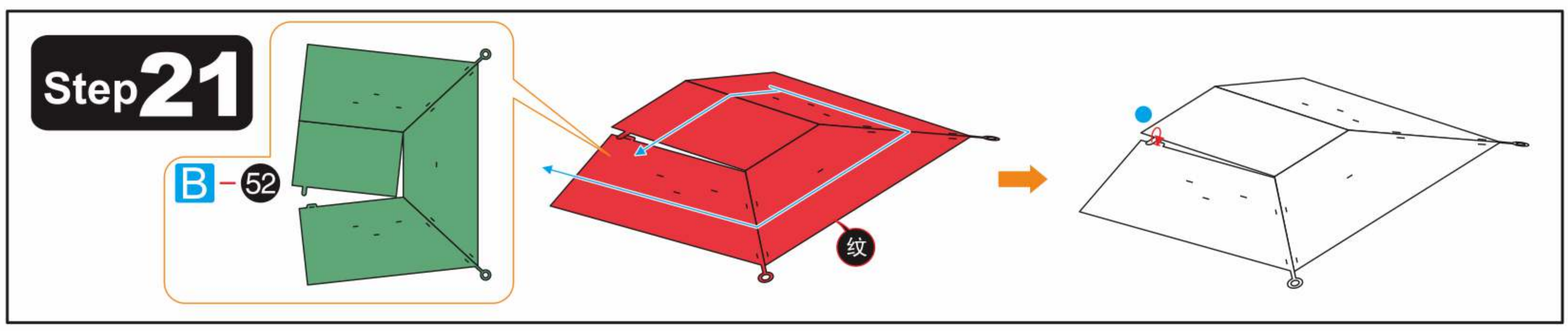
Diagram showing the installation of parts A-45 (x2), D-46 (x2), D-47 (x2), D-48 (x2), D-49 (x2), and D-50 (x2) onto the roof structure.

Step 17

Diagram showing the installation of parts C-39 (x2) and D-40 (x2) onto the roof structure.

Step 20

Diagram showing the installation of part A-51 (x2) onto the roof structure.



Step 31

DE-9 X2

C-80

A-81

B-82 X2

13 14

Step 32

C-83

D-84 X2

A-30

Step 31

15 16

Step 33

D-88 X2

B-85

A-86

A-87 X2

Step 32

D-89 X2

C-90 X2

D-91 X2

D-92 X2

Step 34

Step 30

E-93 X2

C-94

Step 35

Step 28

Step 22

Step 37

Step 35

Step 36

Step 36

A-95

B-96 X2