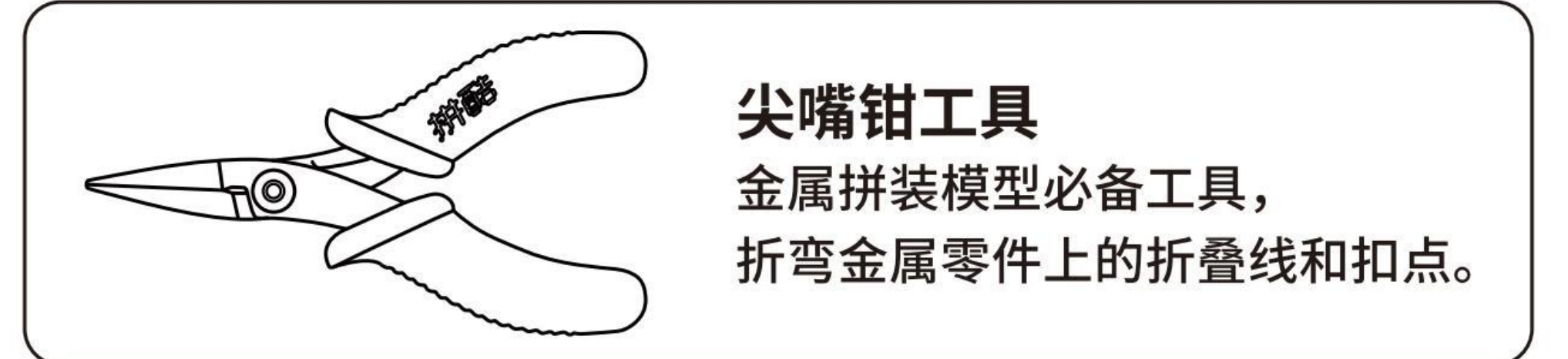
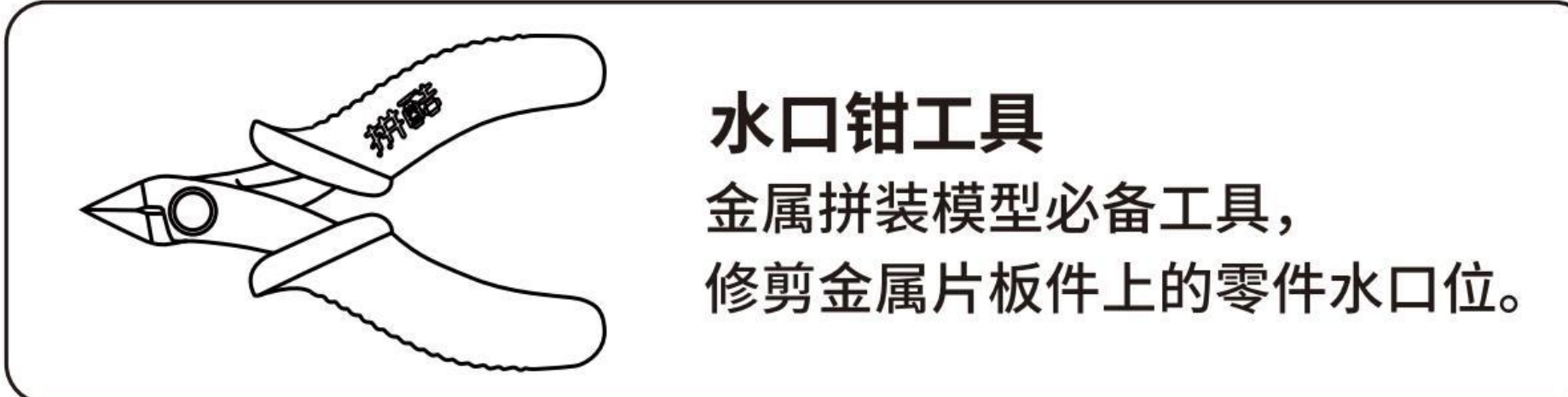


以壁画中菩萨所戴头冠为灵感
其相庄严,是清净自持、坚守本心的象征
愿这份智慧助你在纷扰中安住本心,
行稳致远

拼装前需知:

⚠️ 组装时请小心处理金属零件,以防划伤

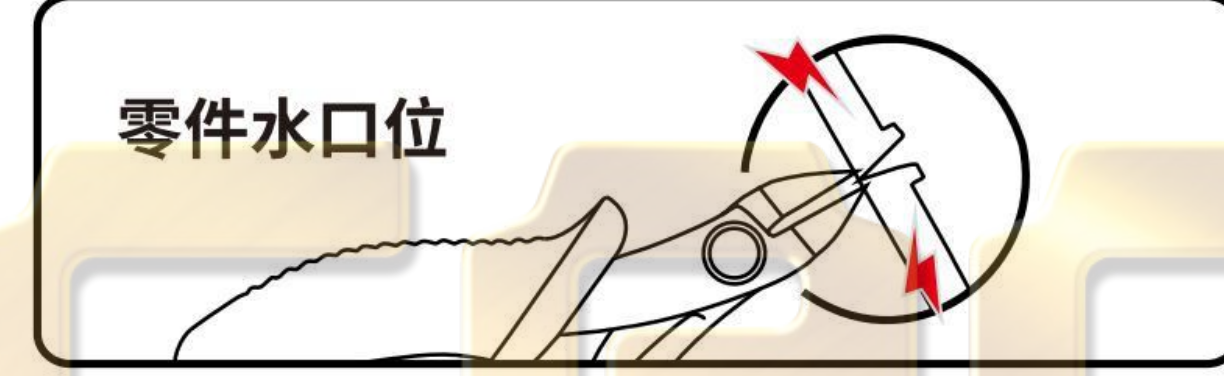
● 准备工具:



建议使用拼酷正品拼装工具(水口钳、尖嘴钳),拼装时更省心、省力,拼装后作品更精细、美观!

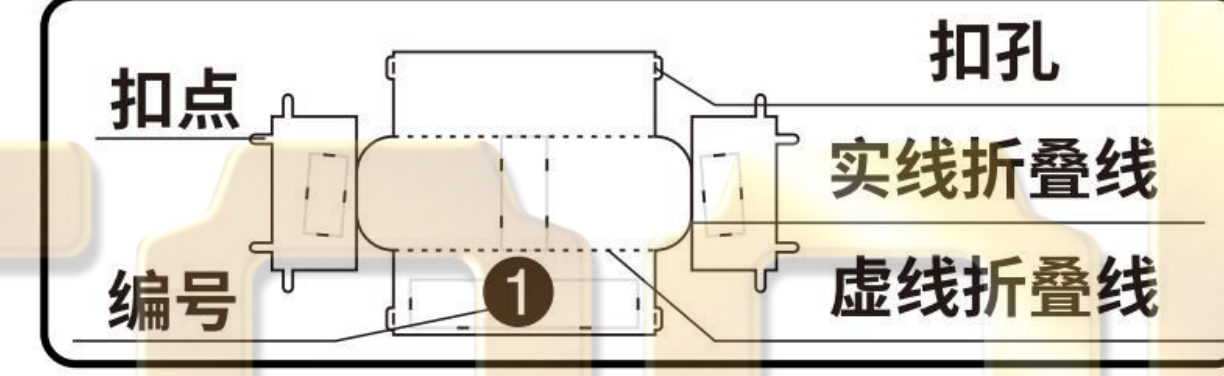
● 拼装方法:

a. 取下零件



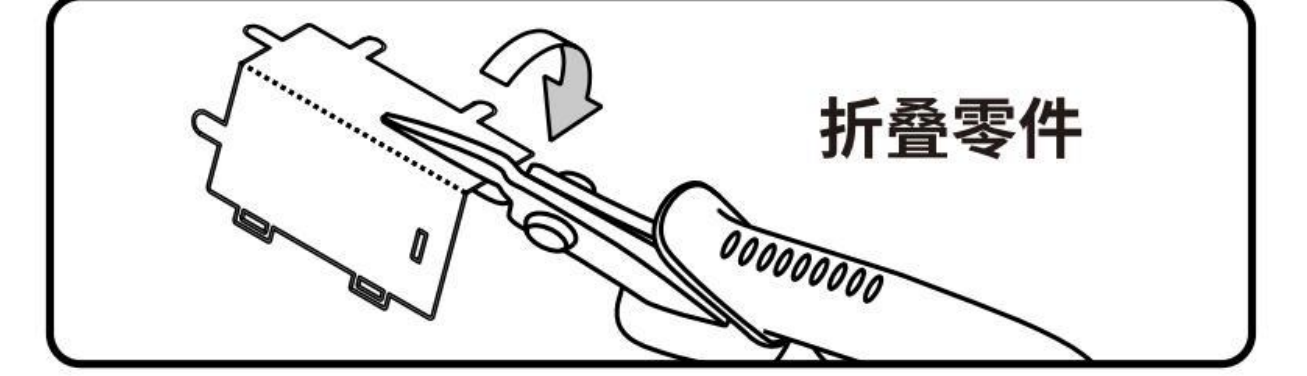
使用水口钳剪断金属零件上的水口,将需要的金属零件从金属片板件取下。

b. 认清零件



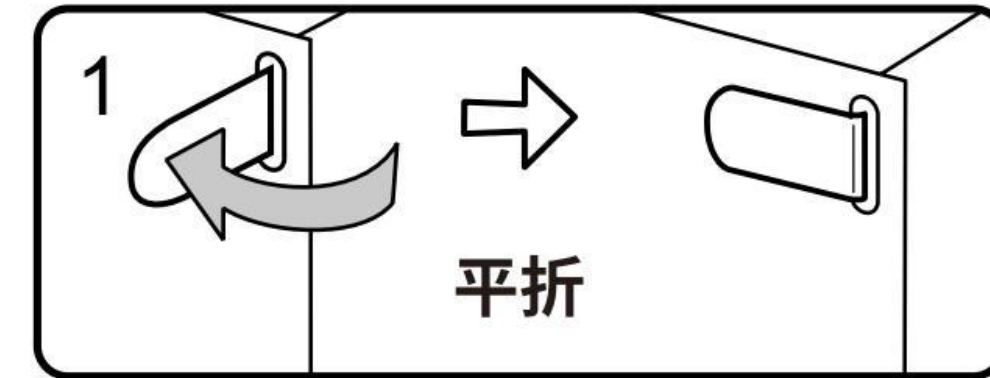
认清金属零件上的扣点、扣孔、实线折叠线、虚线折叠线、编号的样子。

c. 折叠零件

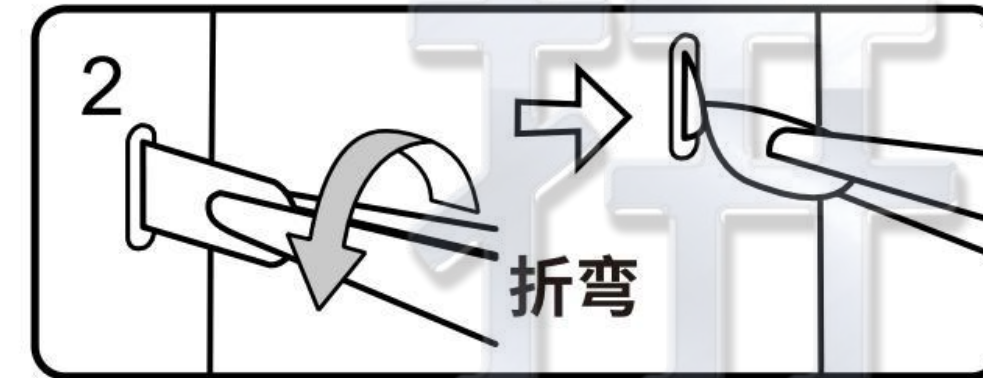


使用尖嘴钳,参照拼装说明书将金属零件折成形状。

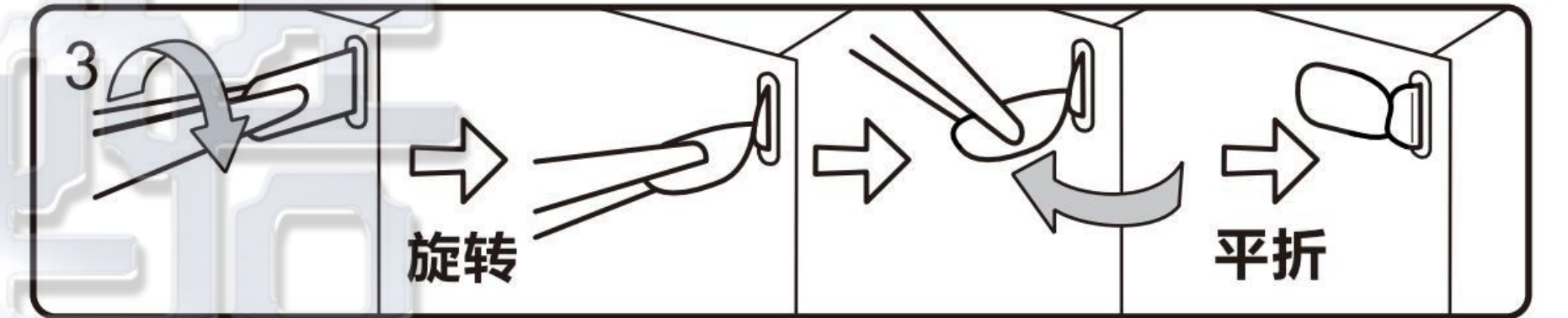
d. 固定零件



● 插入扣孔,平折90°,固定零件。



▲ 插入扣孔,旋转90°,固定零件。



■ 扣点插入扣孔,旋转90°固定零件,再平折。

● 注意事项:



① 剪金属零件时请剪零件“水口位”,请勿将“扣点”当成“水口位”剪下,每次剪零件时请仅剪当前步骤的零件,切勿一次性将所有零件全部剪下,避免丢失;

② 当遇到折叠线的零件,请注意金属片的正反面及拼折方向,请按照说明书说明的方向,轻剪慢折,最好一次折叠完成,请勿反复折叠,避免零件损坏。



技术指导 补件服务
更多信息 敬请登录

微信扫一扫,更多精彩!
www.piececool.com

拼装步骤

Step 01

Step 02

Step 03

Step 04

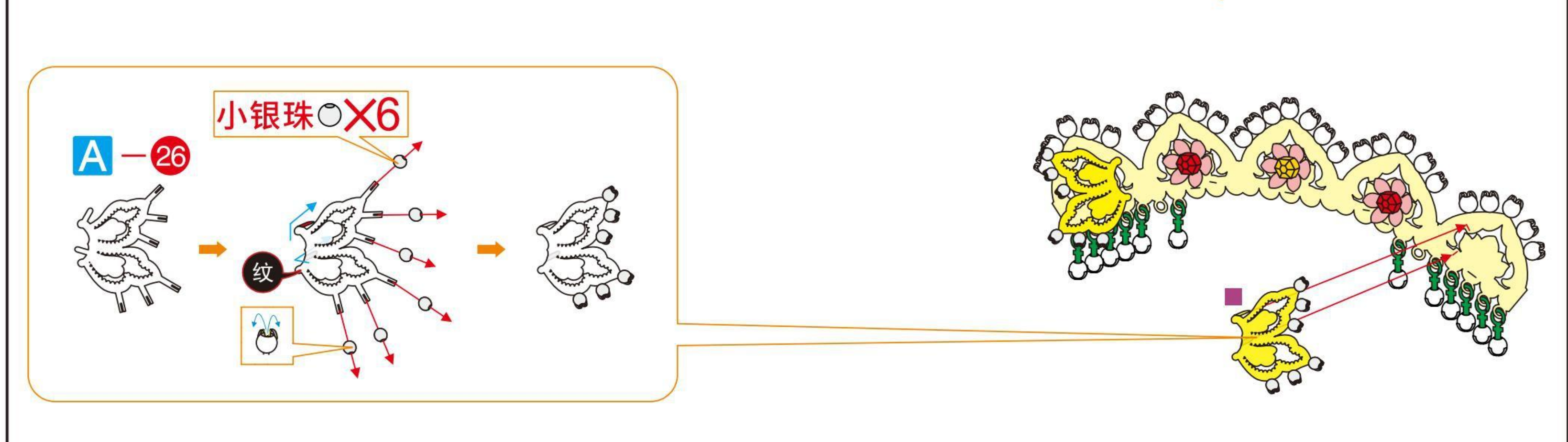
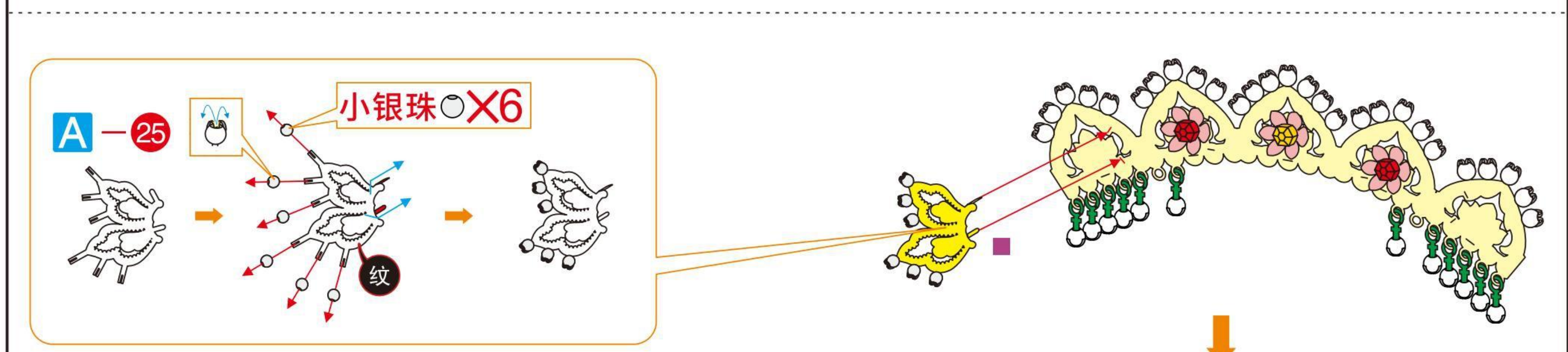
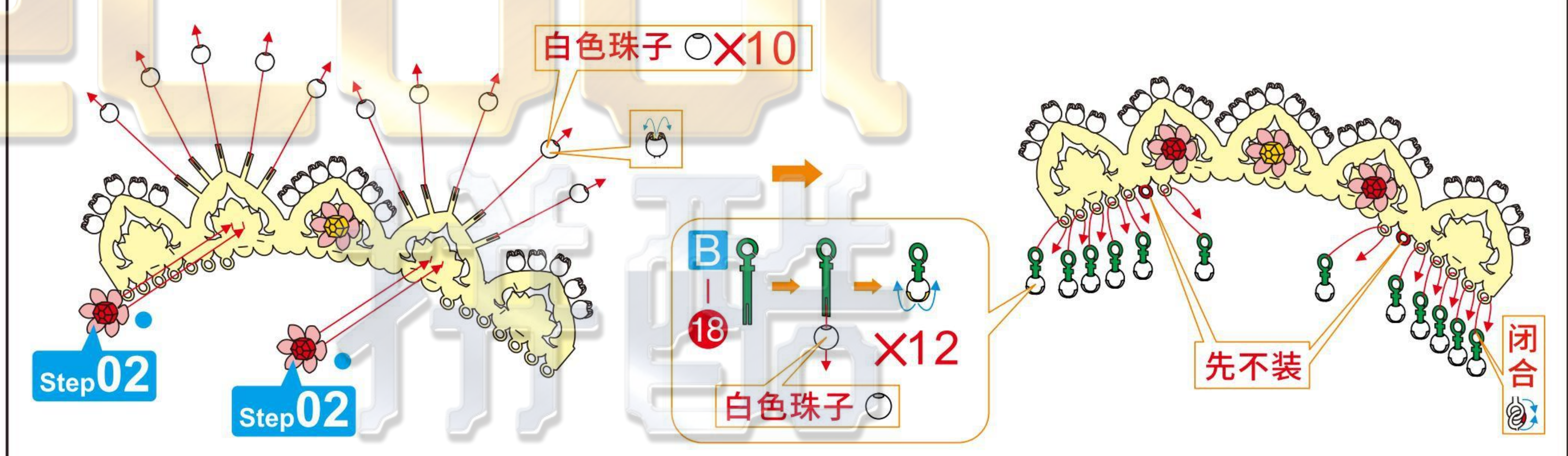
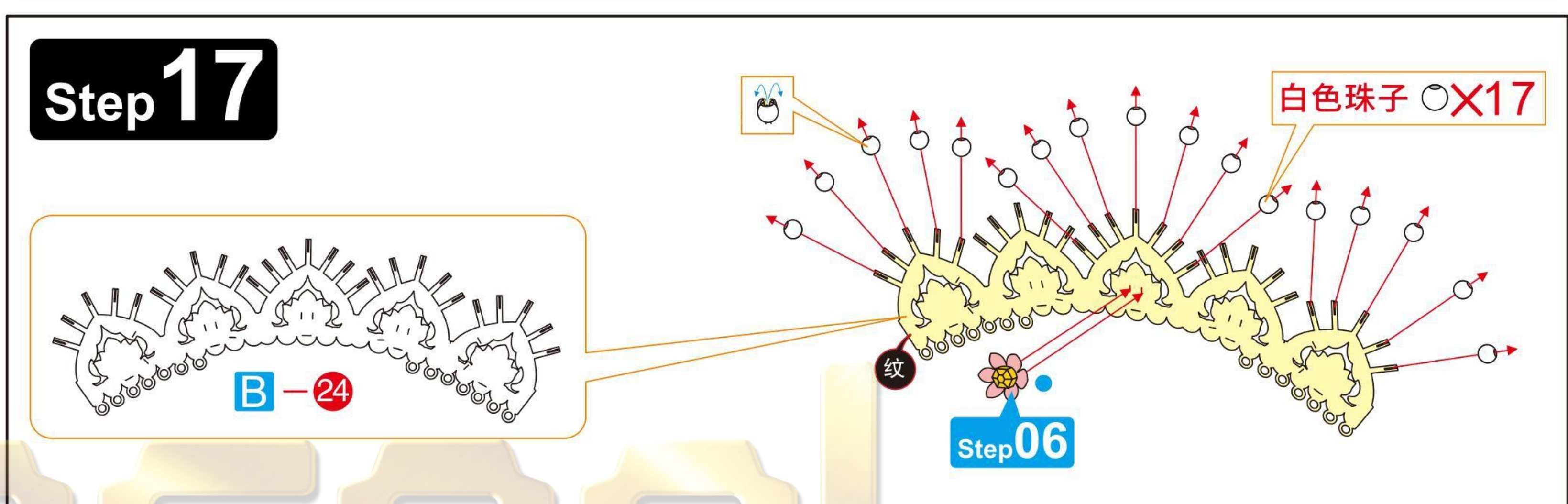
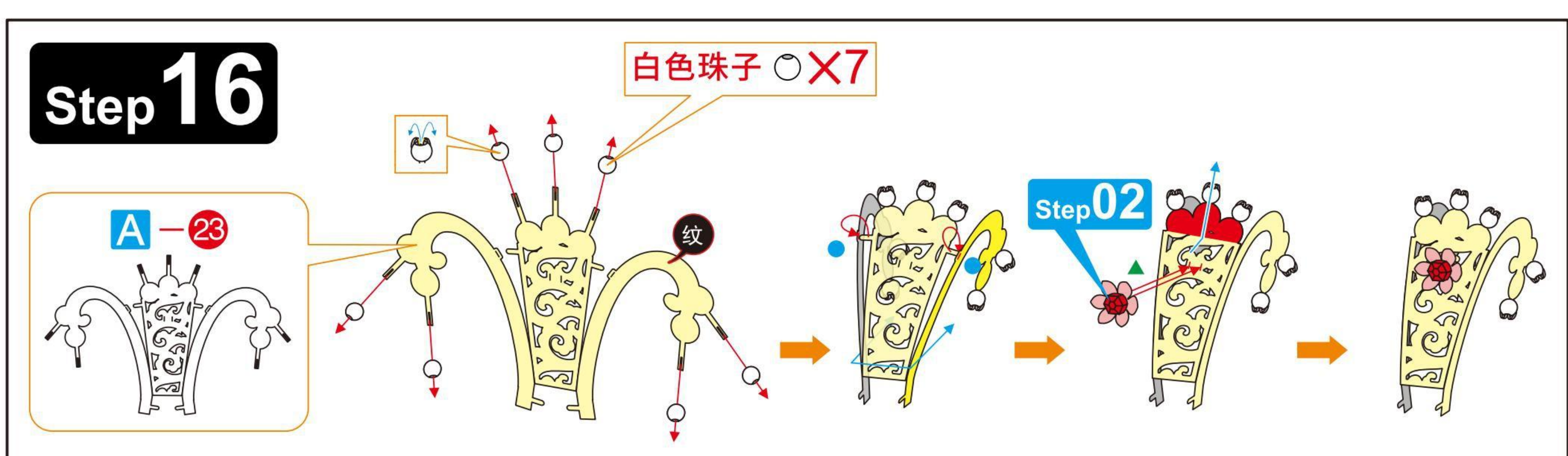
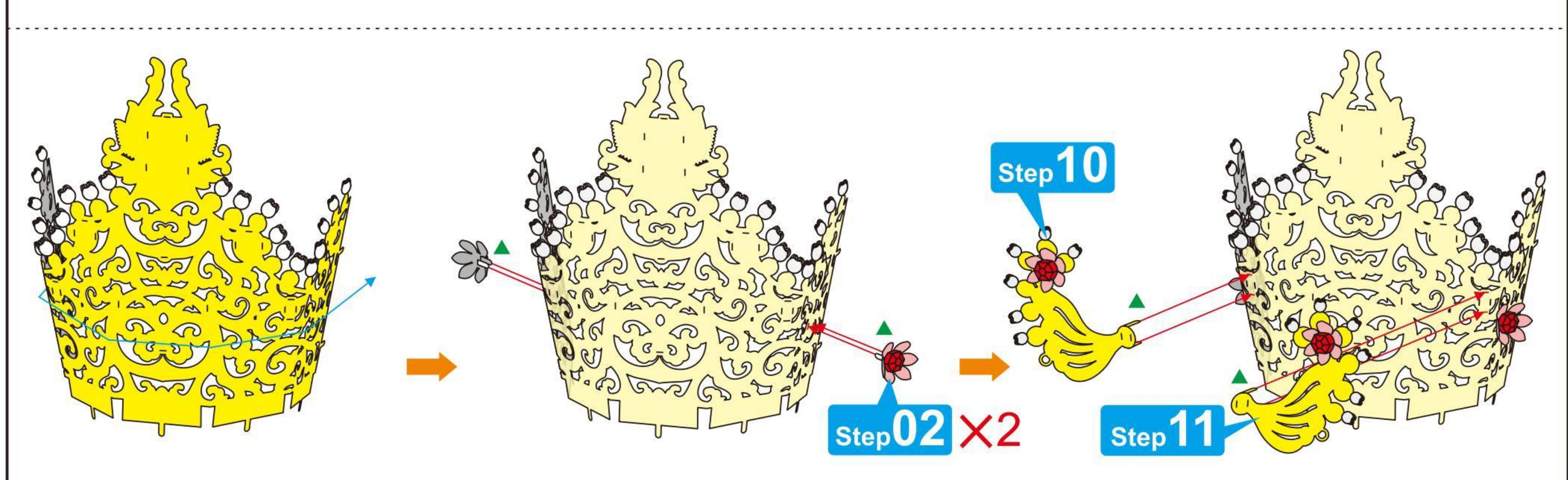
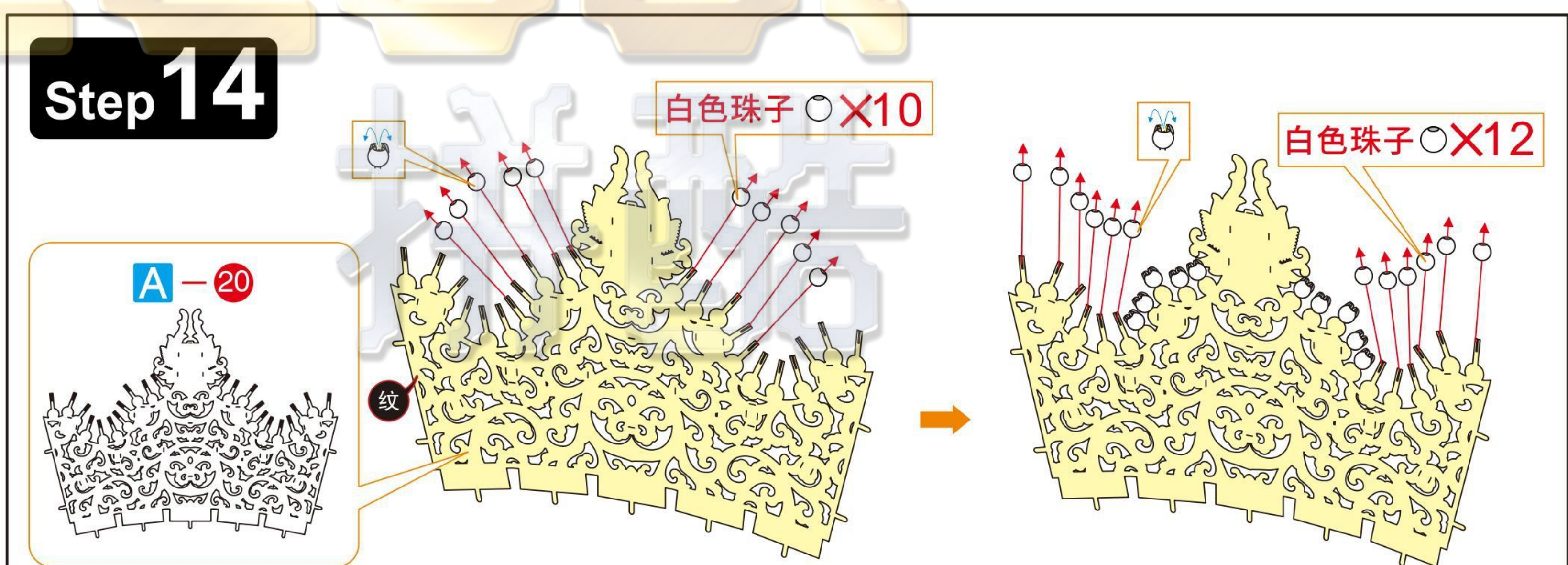
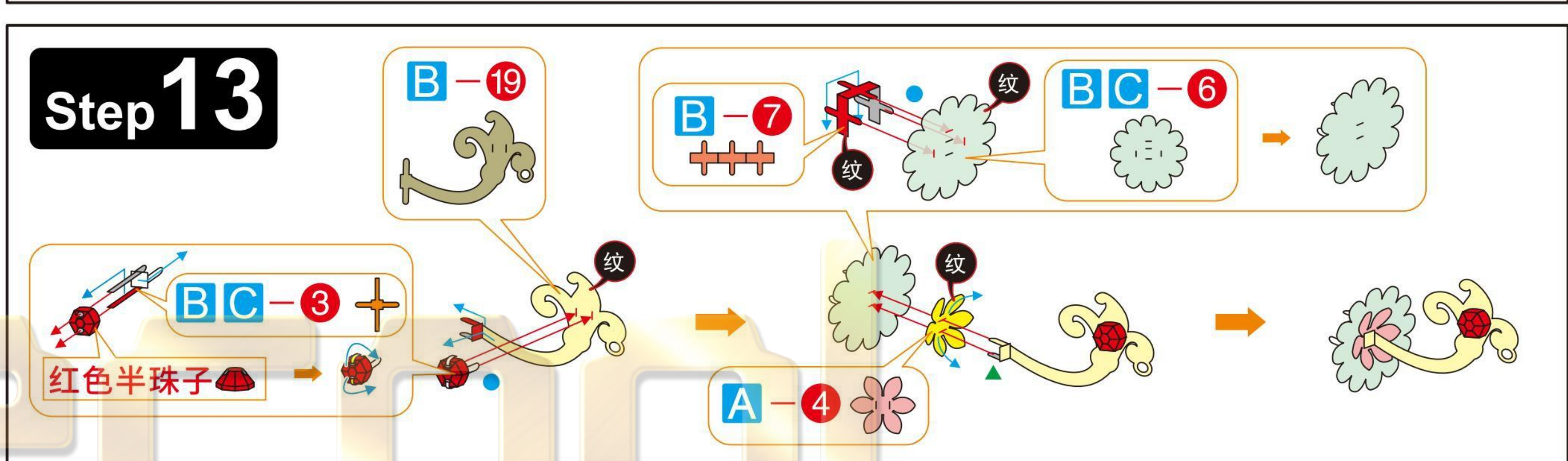
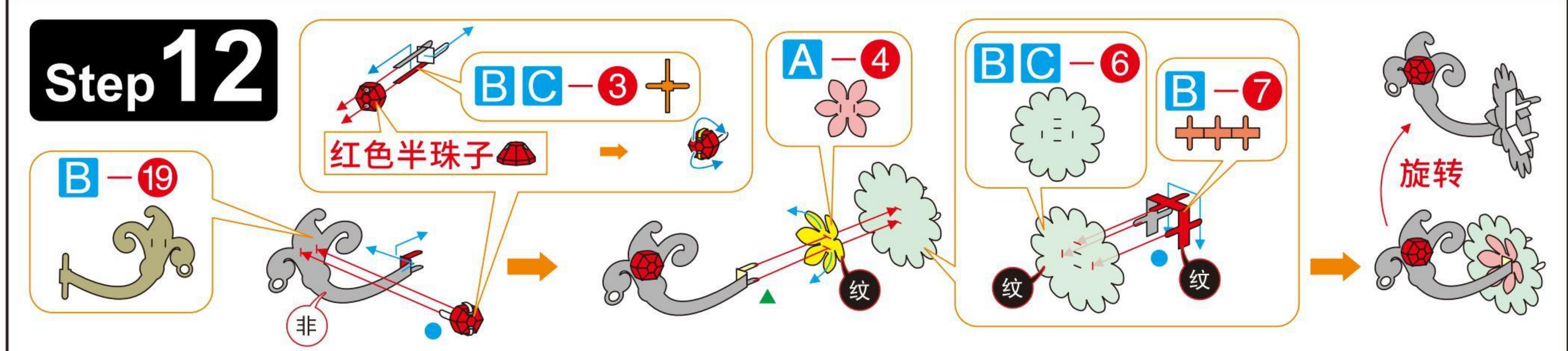
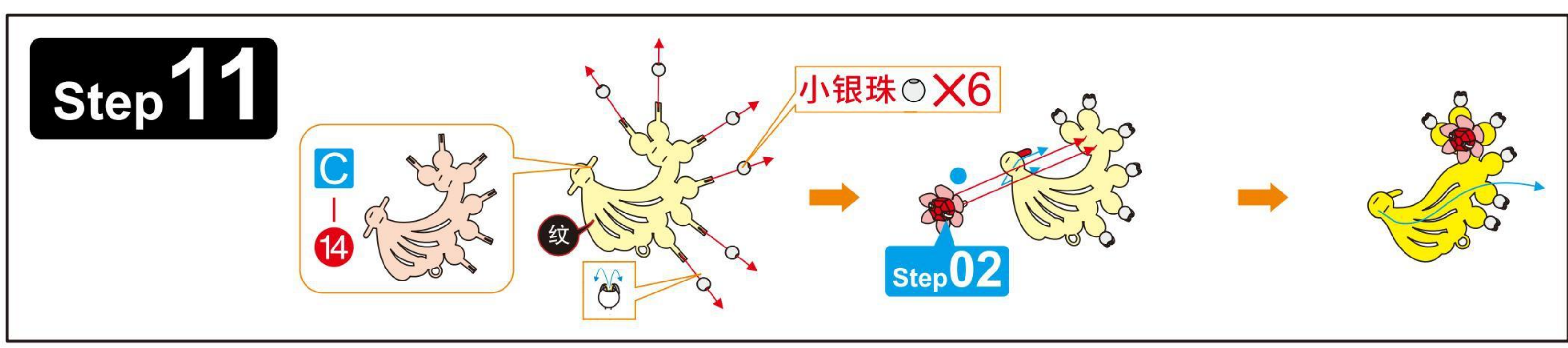
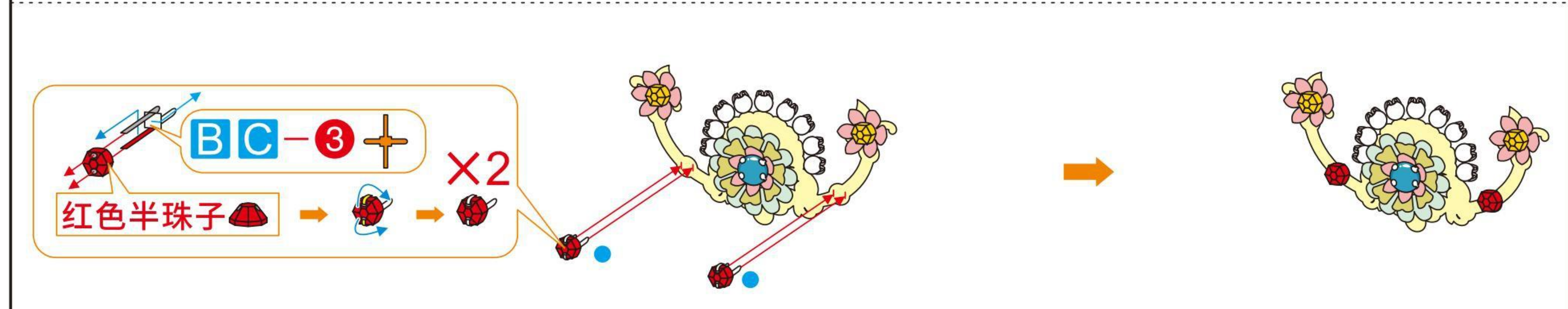
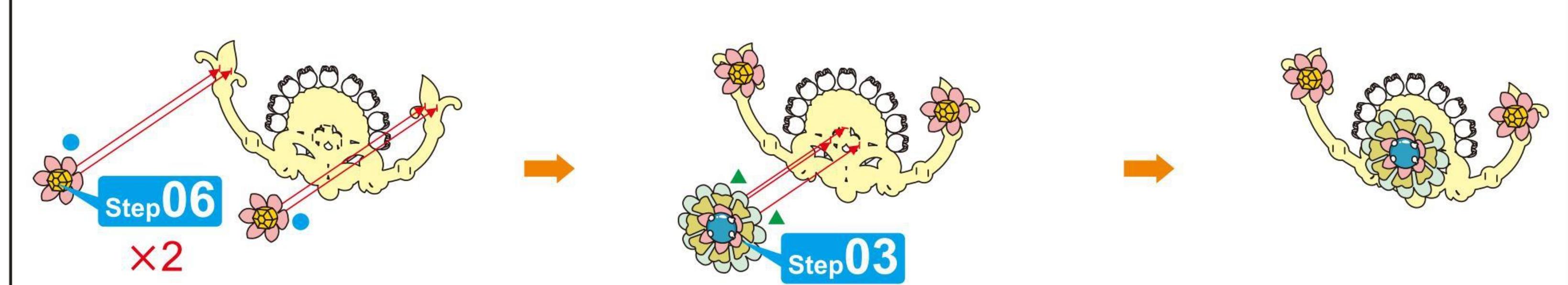
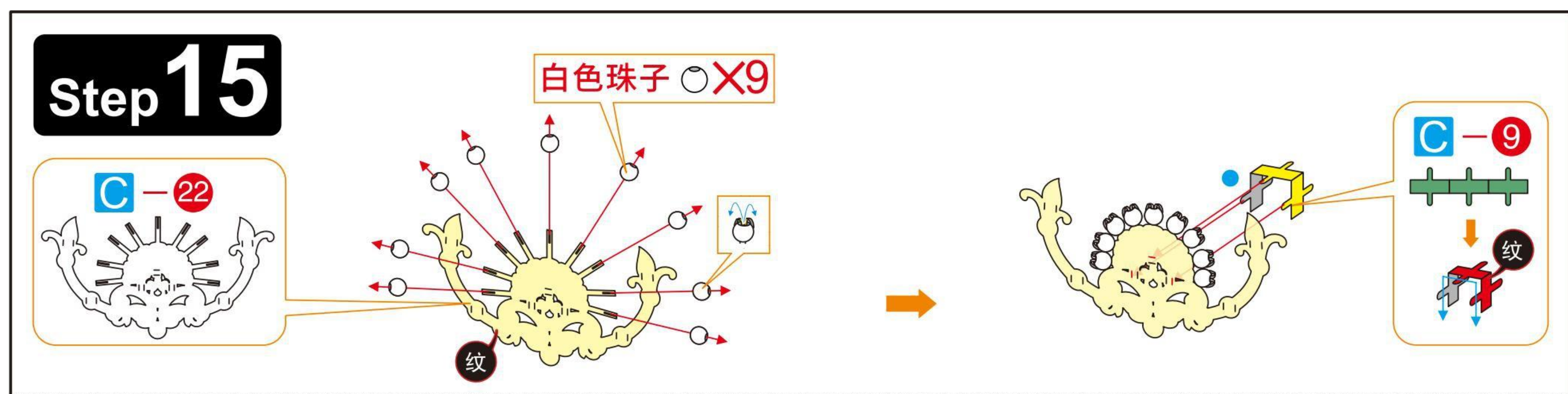
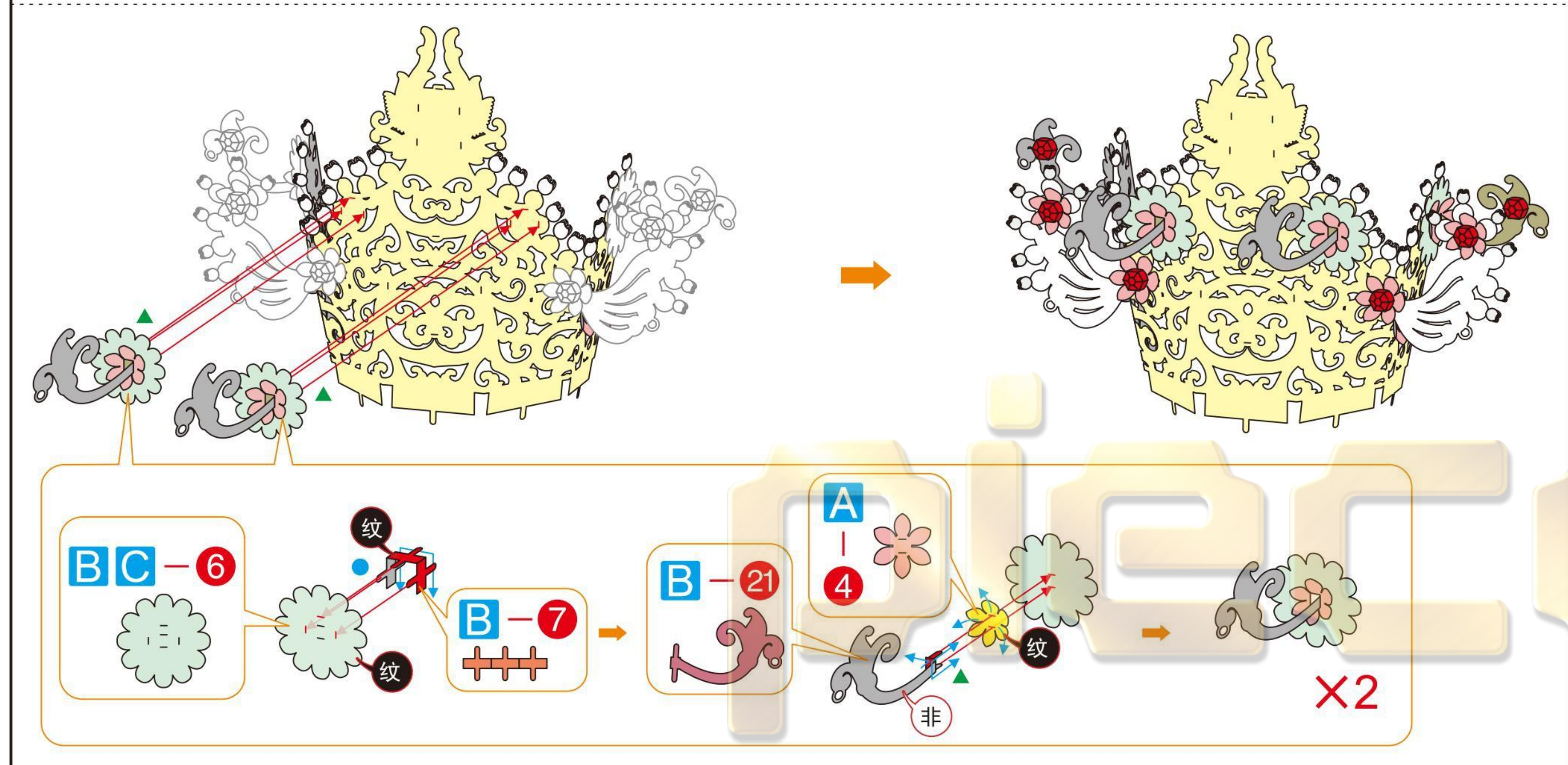
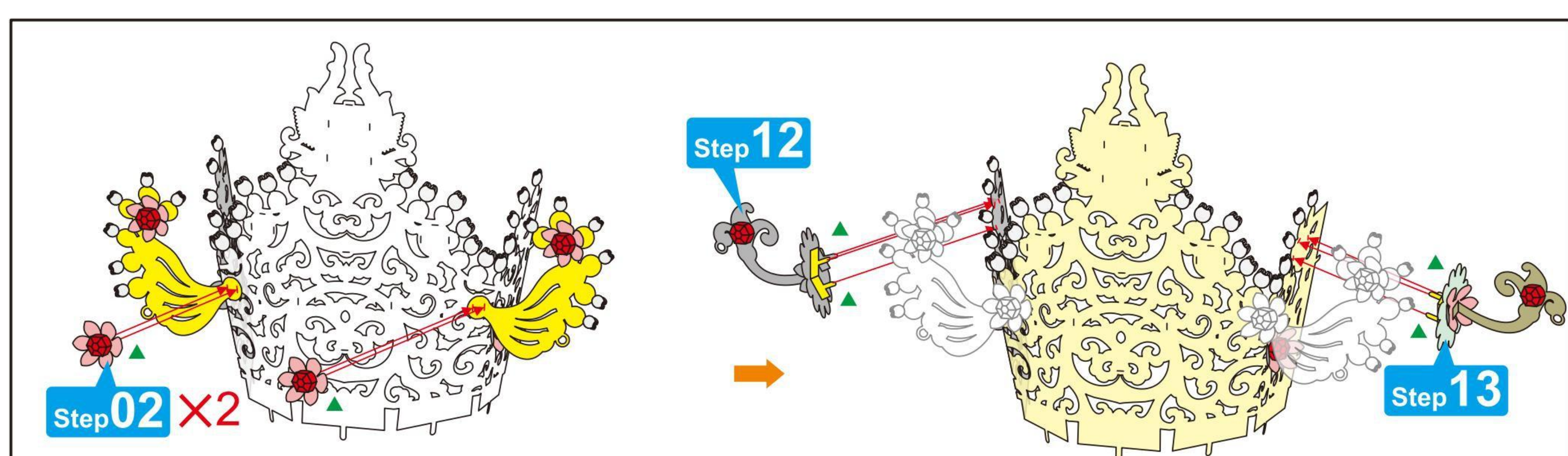
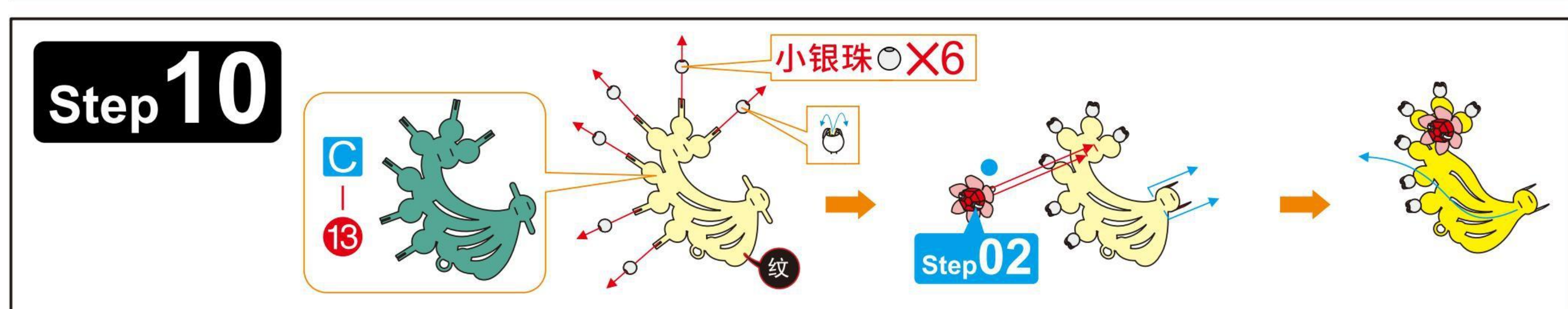
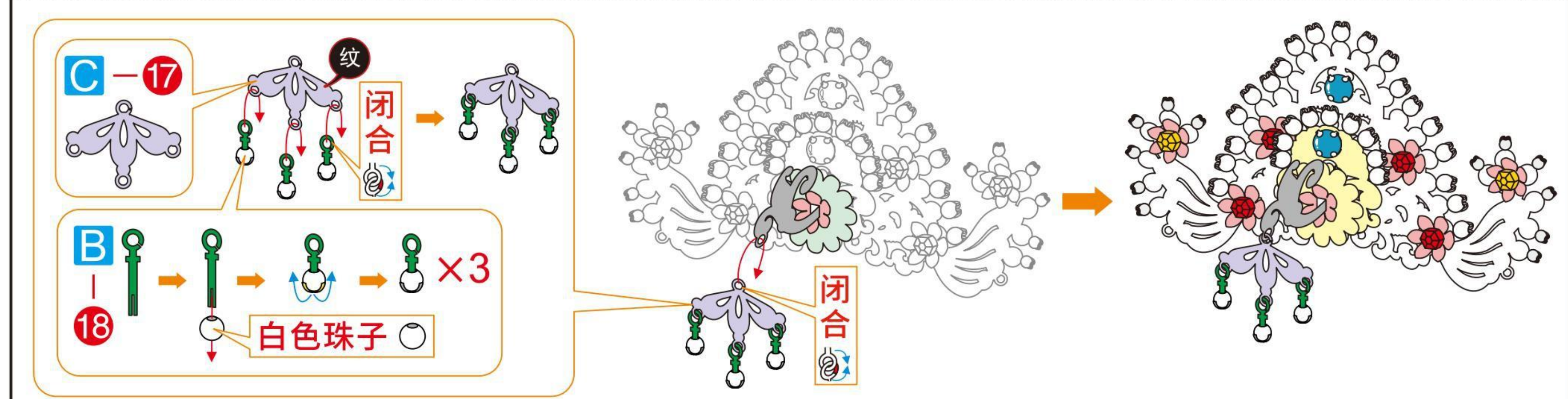
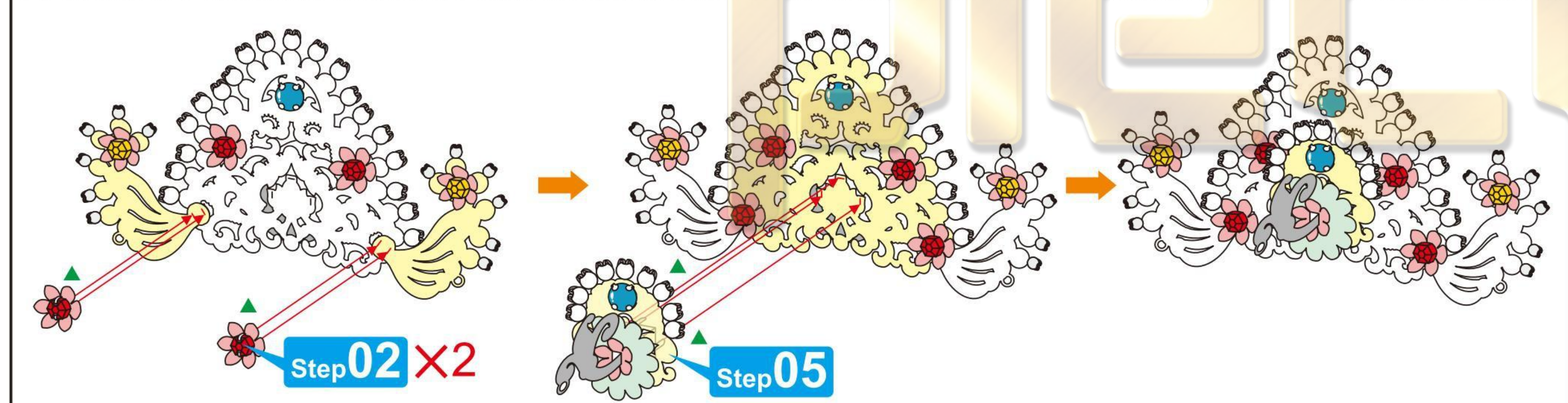
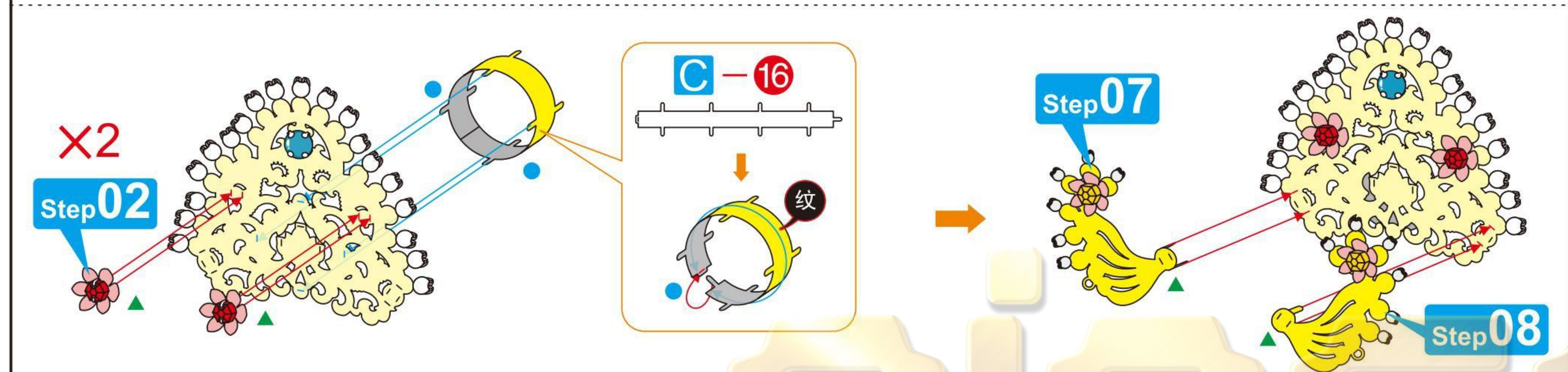
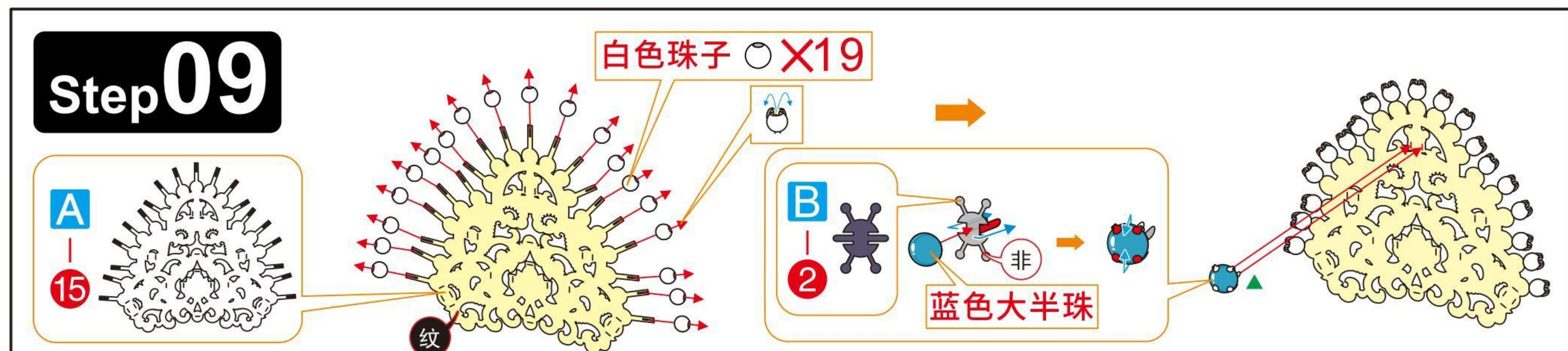
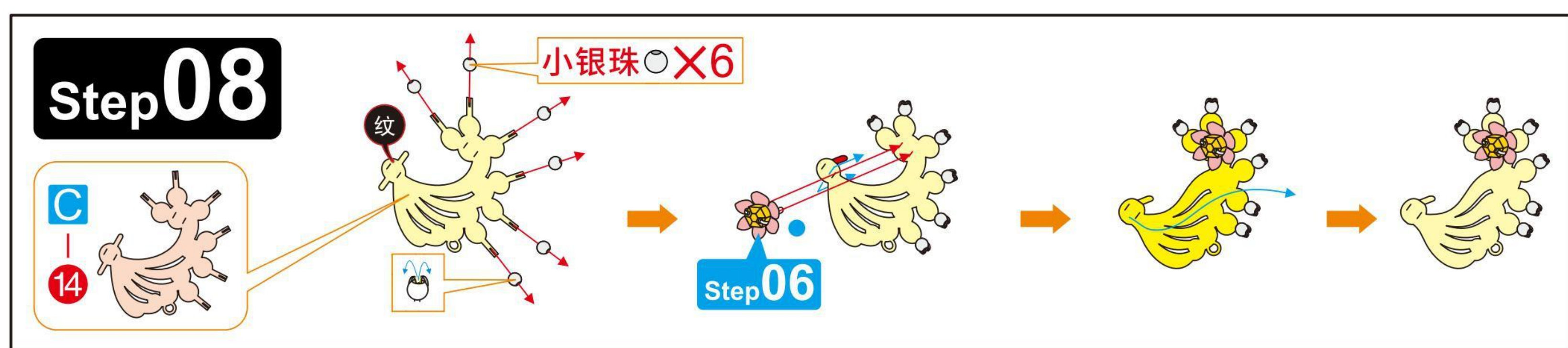
Step 02

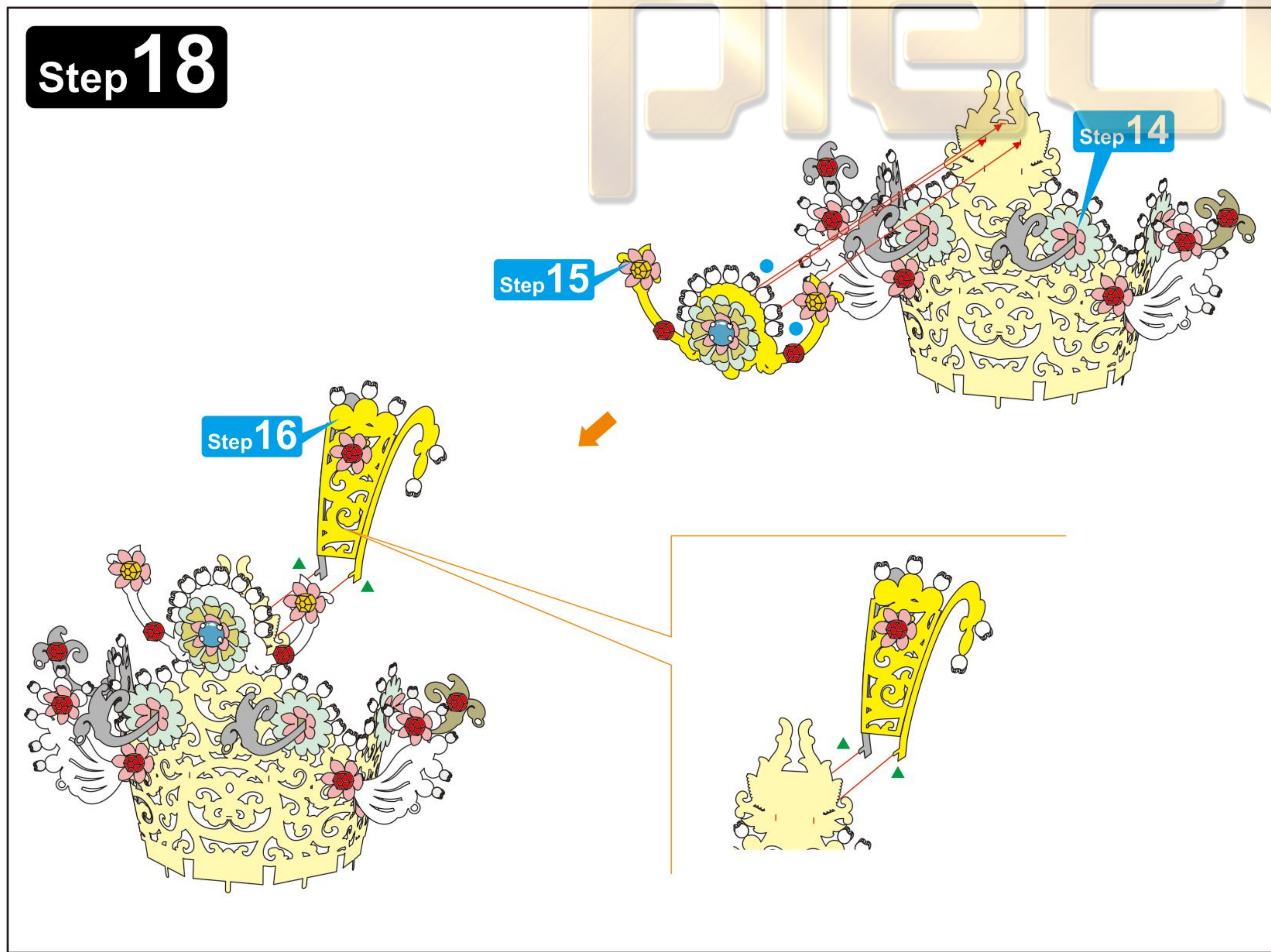
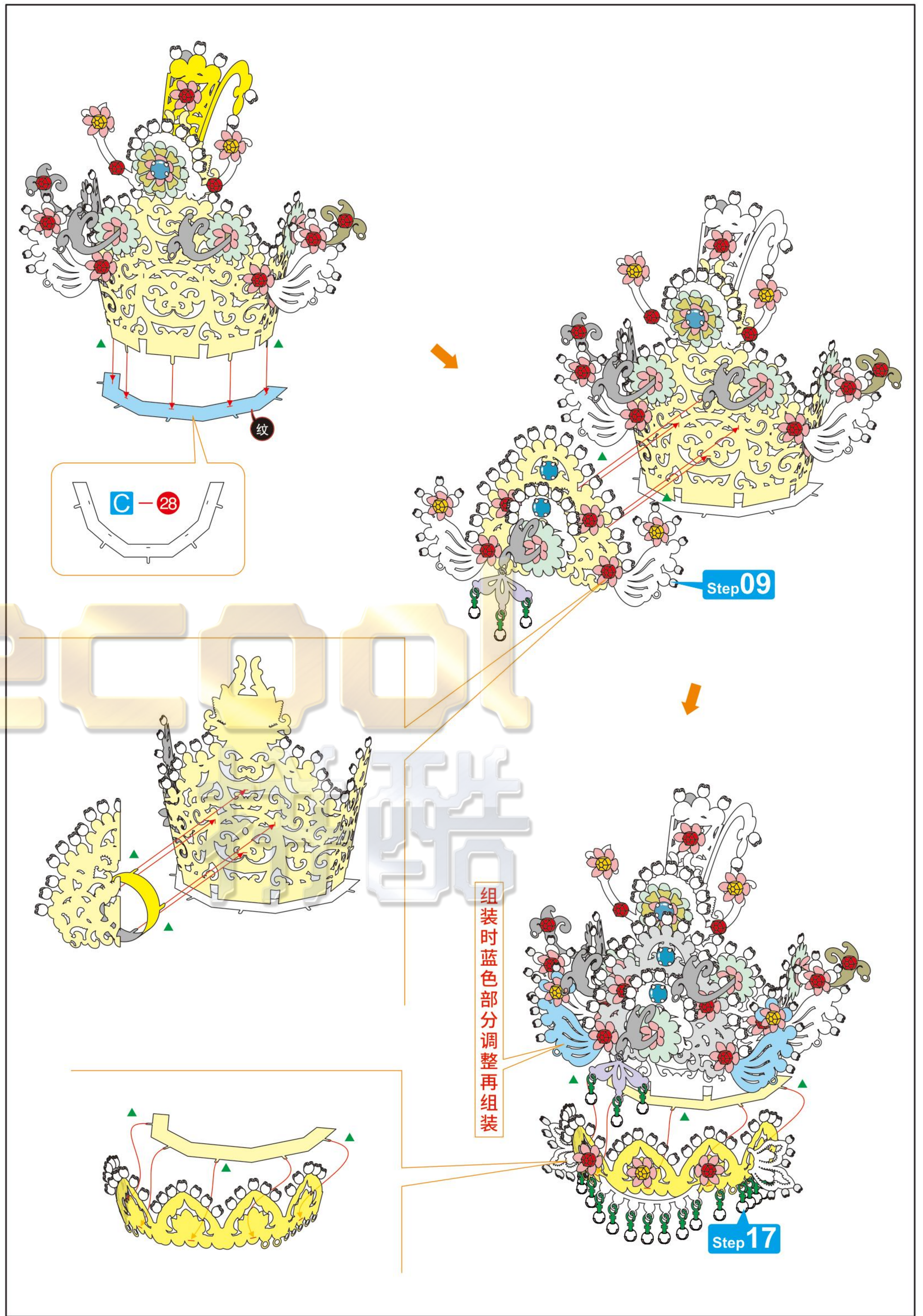
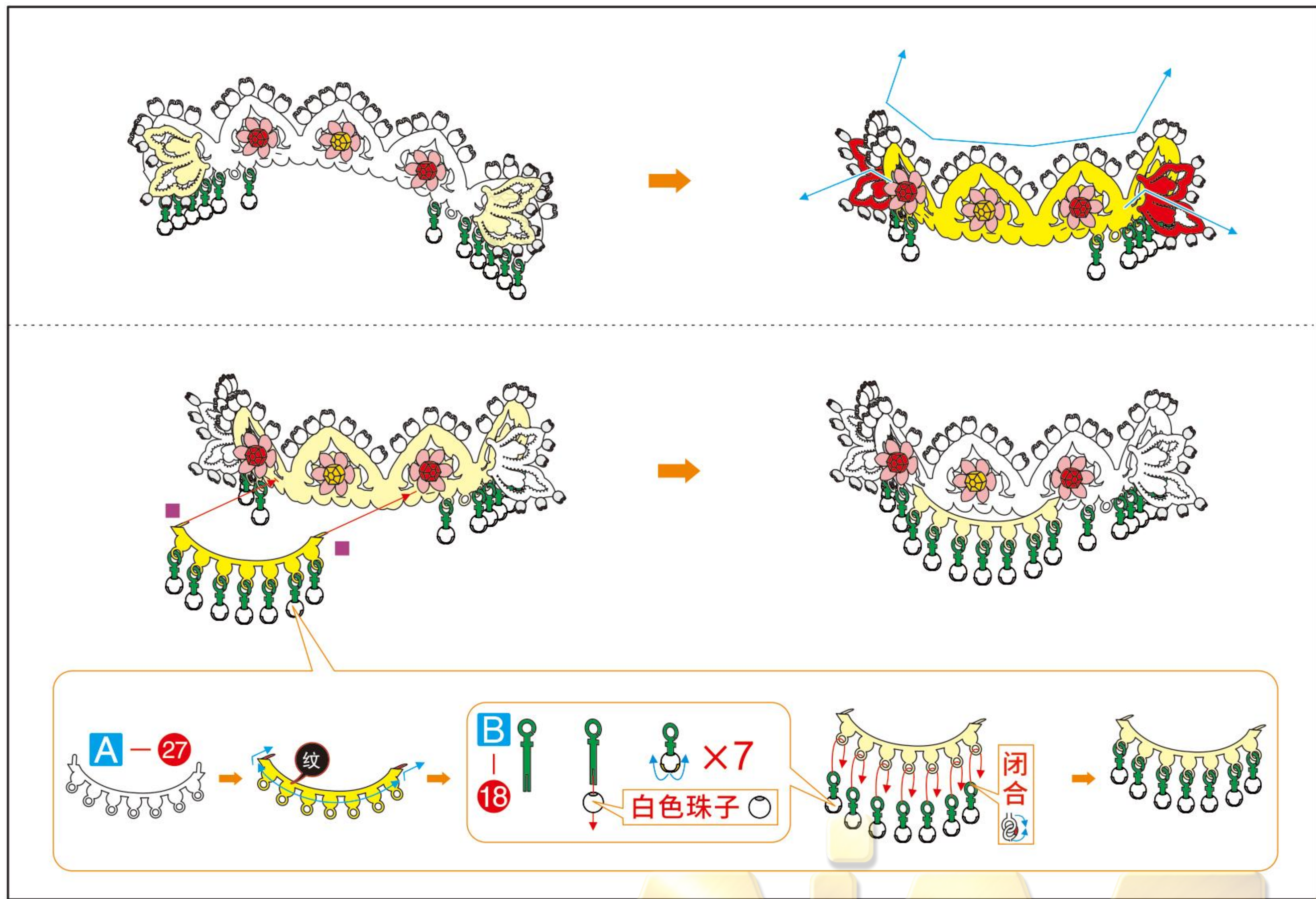
Step 03

Step 05

Step 06

Step 07





7 8
9 10

