

Piececool  
拼酷

雷峰塔  
LEIFENG PAGODA  
P100

拼装说明书



AGES 14+

本产品为金属制品，14岁以下需由成人陪同完成！

© WIST PLASTIC & METAL TECHNOLOGY LIMITED. ALL RIGHTS RESERVED.

电子版下载地址：<http://www.piececool.com/cpshuoming/P100.pdf>

# 拼前需知:

# Piececool 拼酷

## ● 准备工具:



建议使用拼酷正品拼装工具（水口钳、尖嘴钳），拼装时更省心、省力，拼装后作品更精细、美观！

## ● 拼装方法:

### a. 取下零件



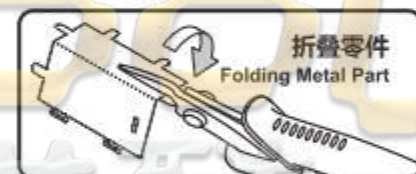
使用水口钳剪断金属零件上的水口，将需要的金属零件从金属片板件取下。

### b. 识别零件



识别金属零件上的扣点、折叠线、扣孔的样子。

### c. 折叠零件



使用尖嘴钳，参照拼装说明书将金属零件折成形状。

### d. 固定零件

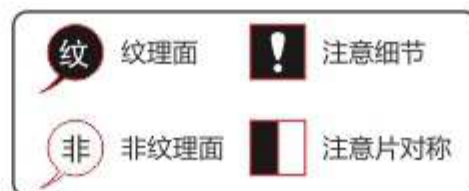


● 插入扣孔，平折 90°



▲ 插入扣孔，旋转 90°

## ● 注意事项:



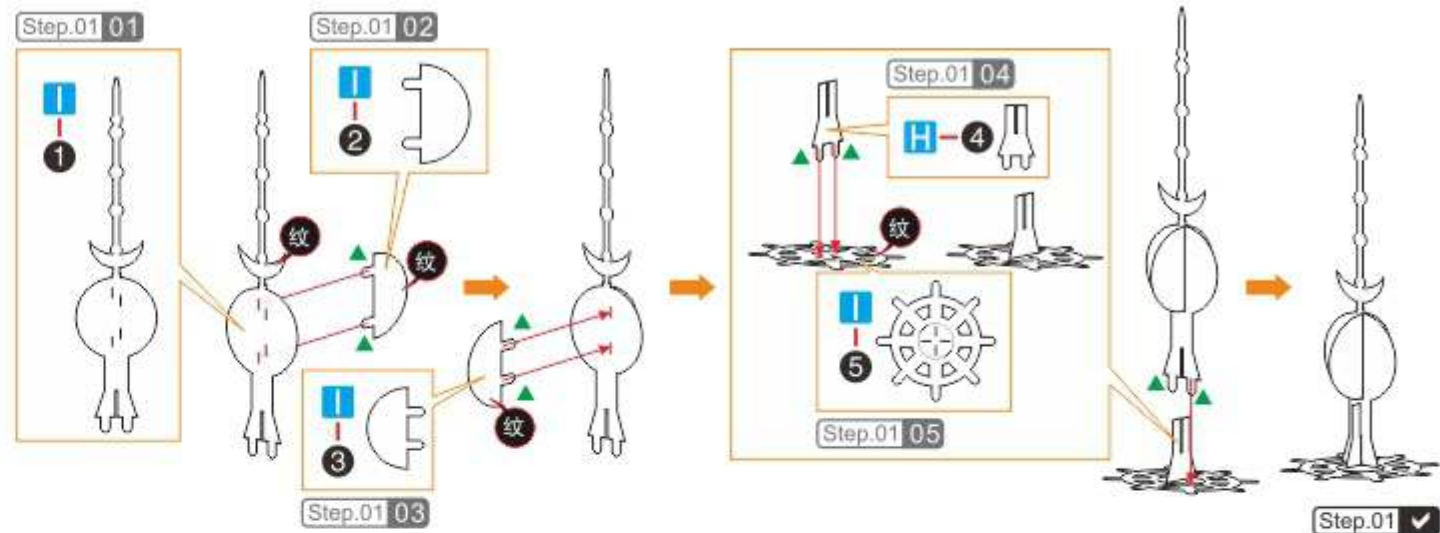
剪金属零件时请剪零件“水口位”，请勿将“扣点”当成“水口位”剪下，每次剪零件时请仅剪当前步骤的零件，切勿一次性将所有零件全部剪下，避免丢失；

当遇到折叠线的零件，请注意金属片的正反面及拼折方向，请按照说明书说明的方向，轻剪慢折，最好一次折叠完成，请勿反复折叠，避免零件损坏。

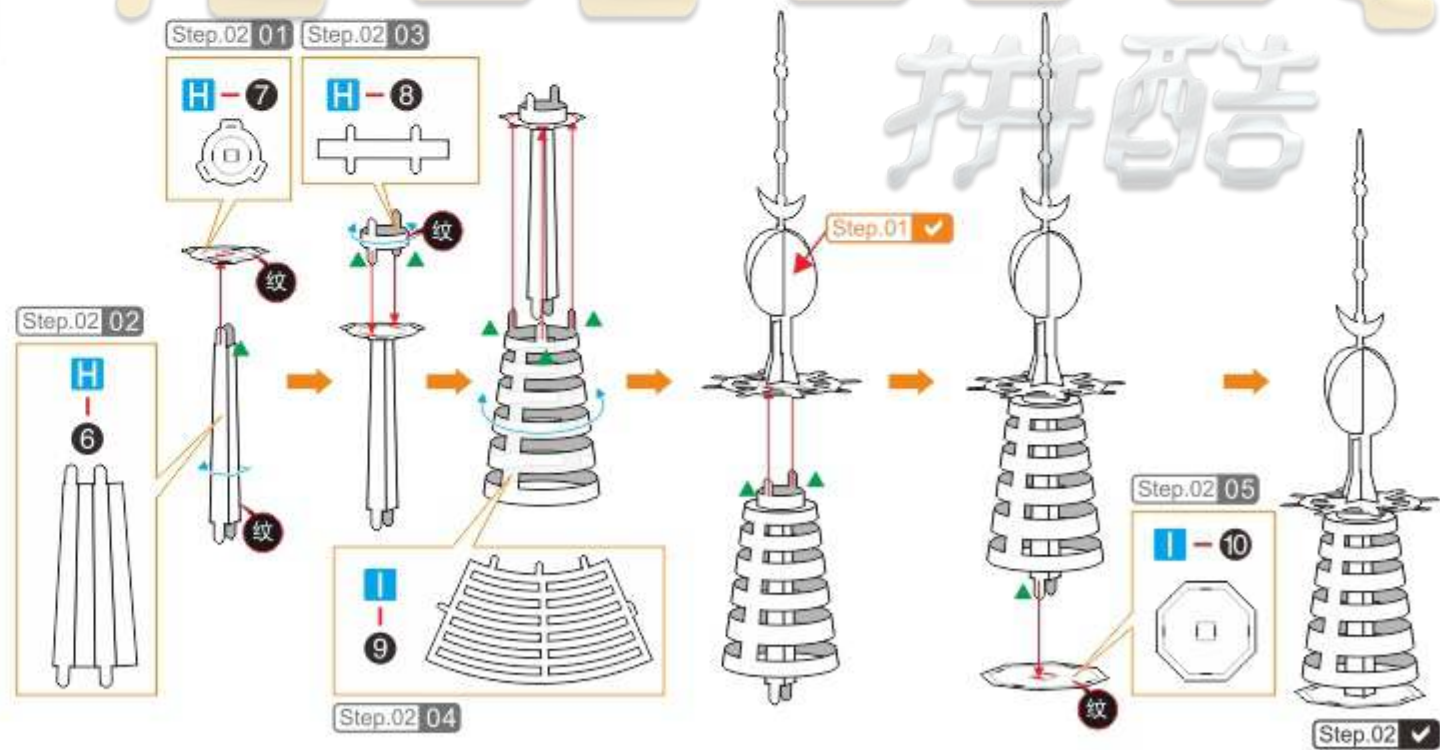
# 拼装步骤:

Piececool  
拼酷

## Step 01

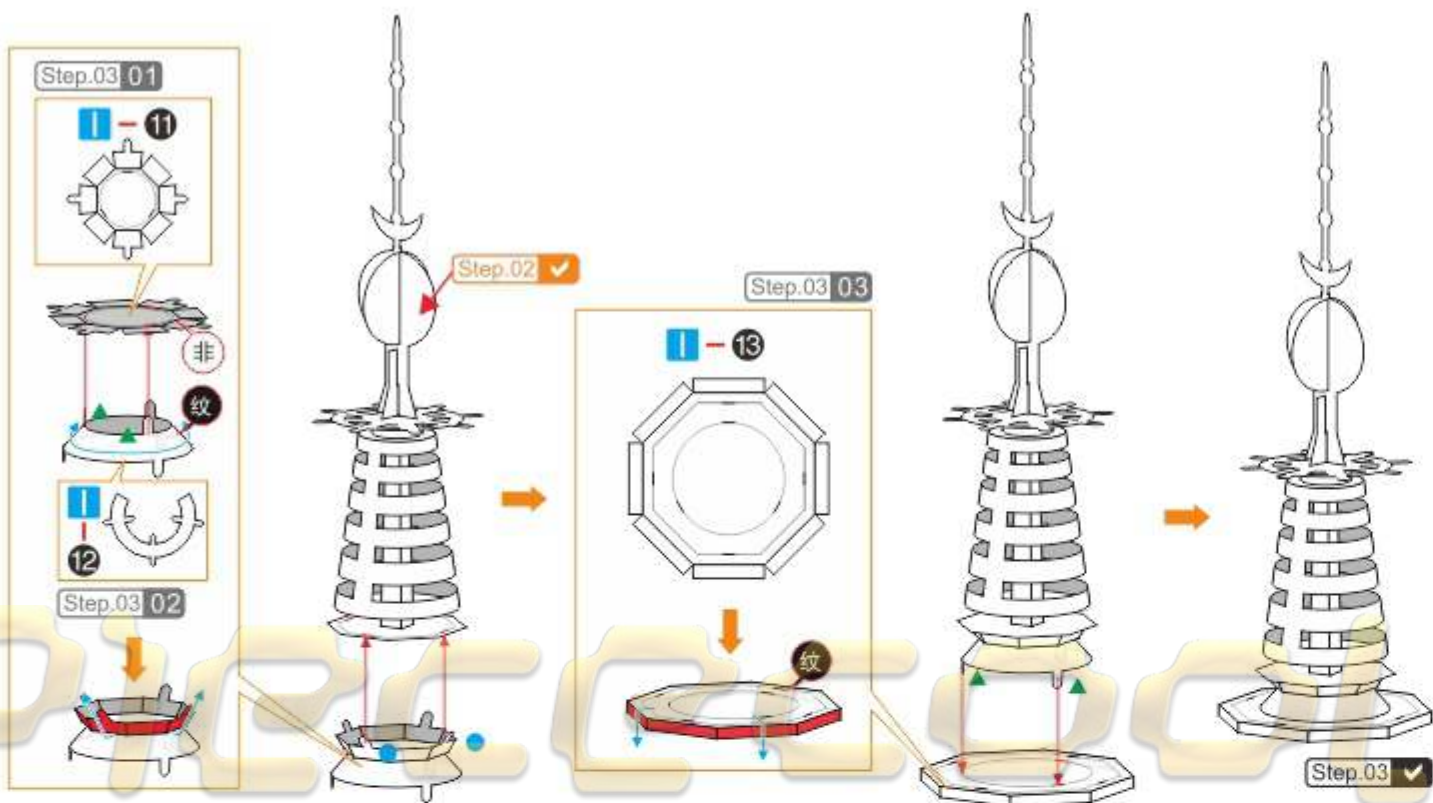


## Step 02

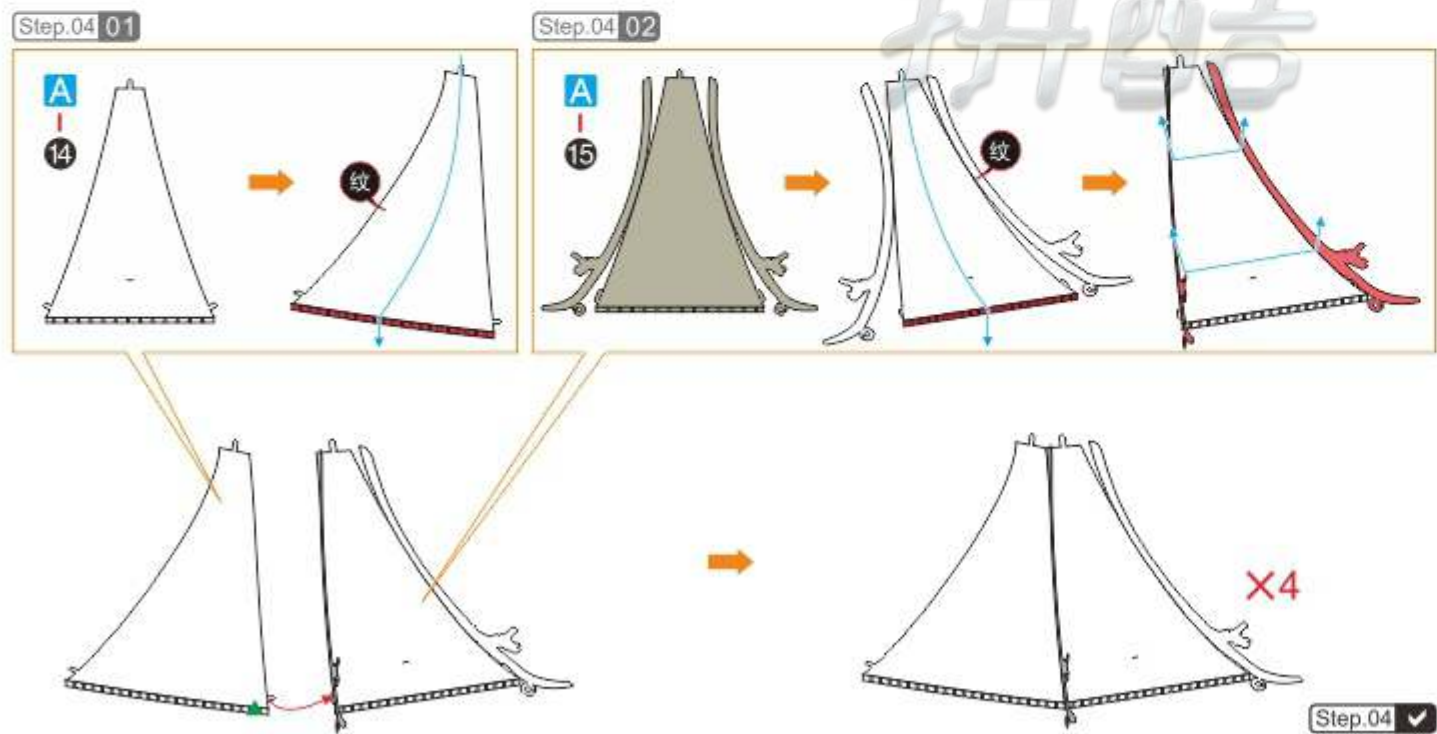




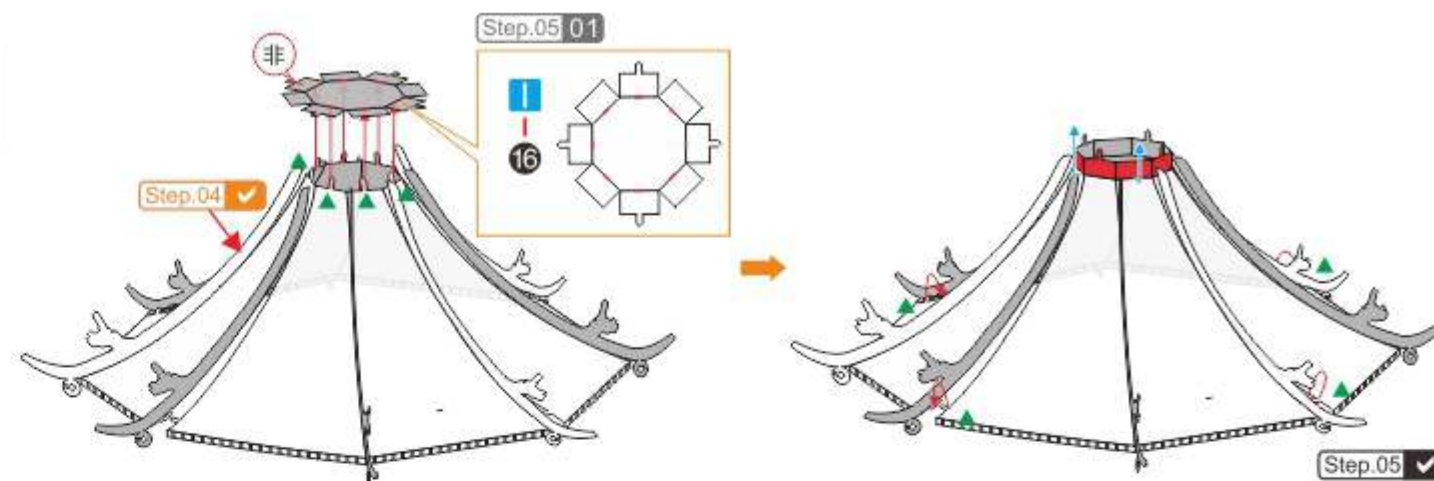
Step  
03



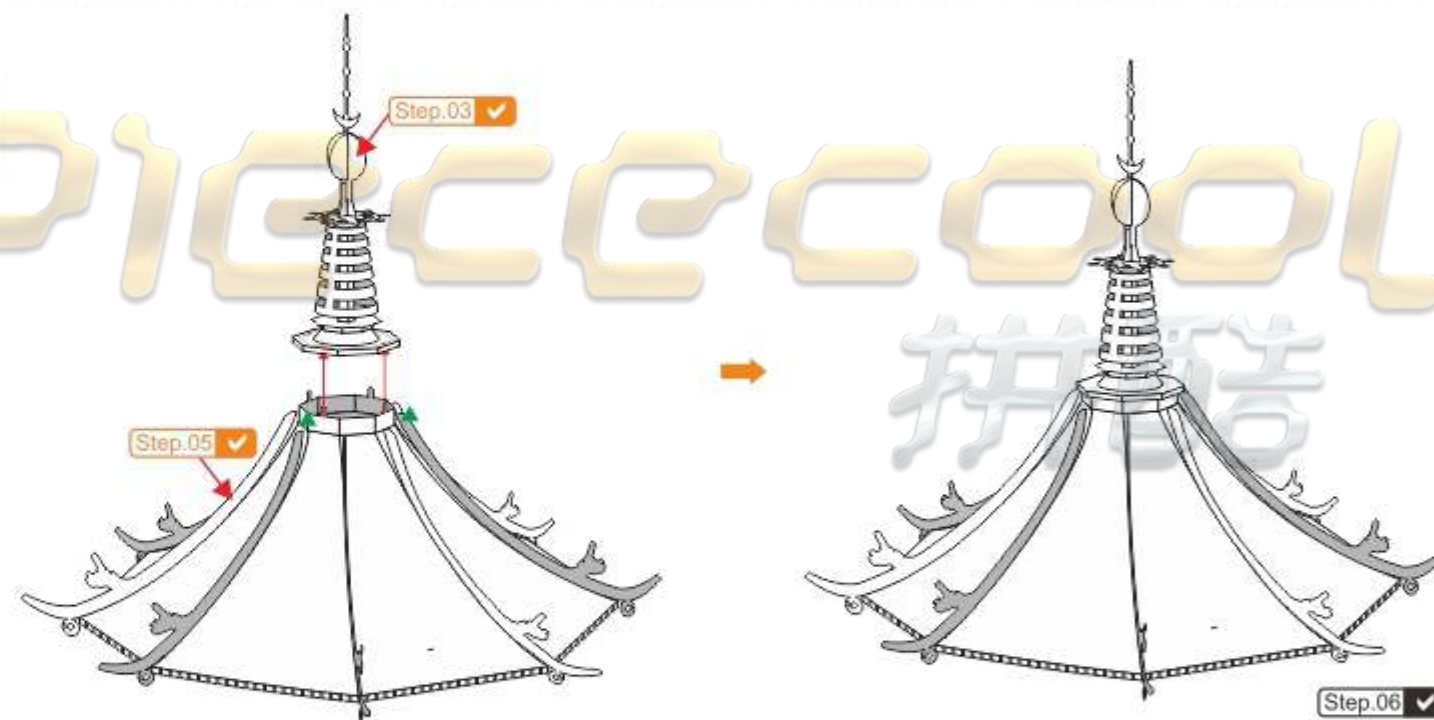
Step  
04



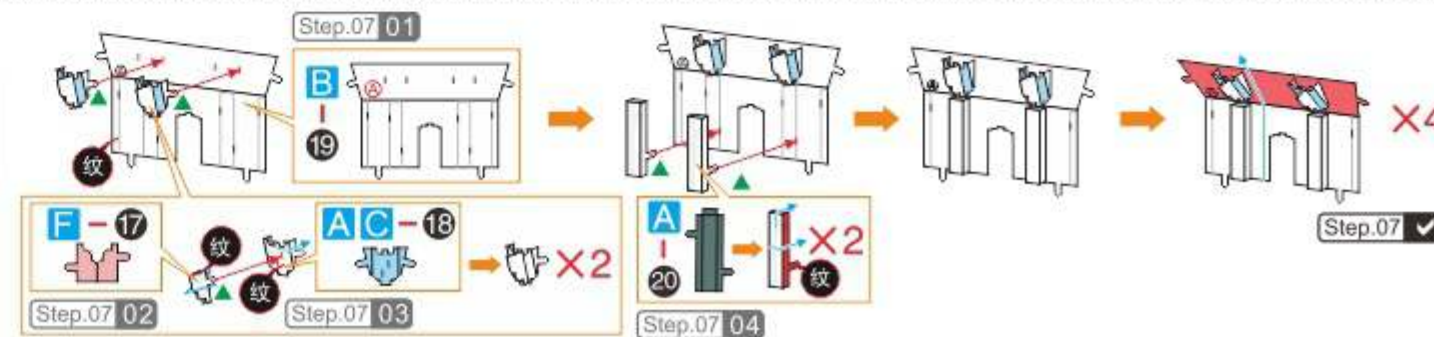
Step  
05



Step  
06

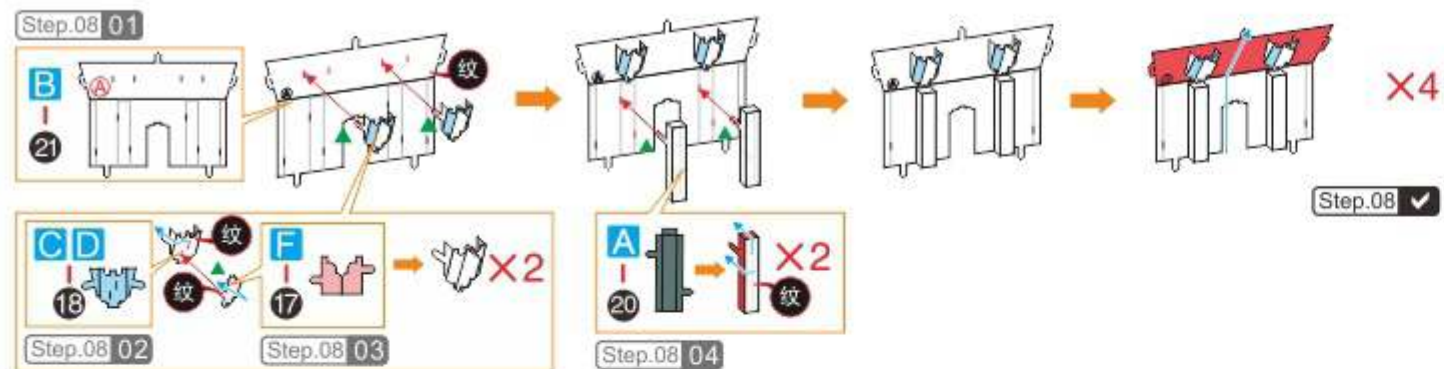


Step  
07

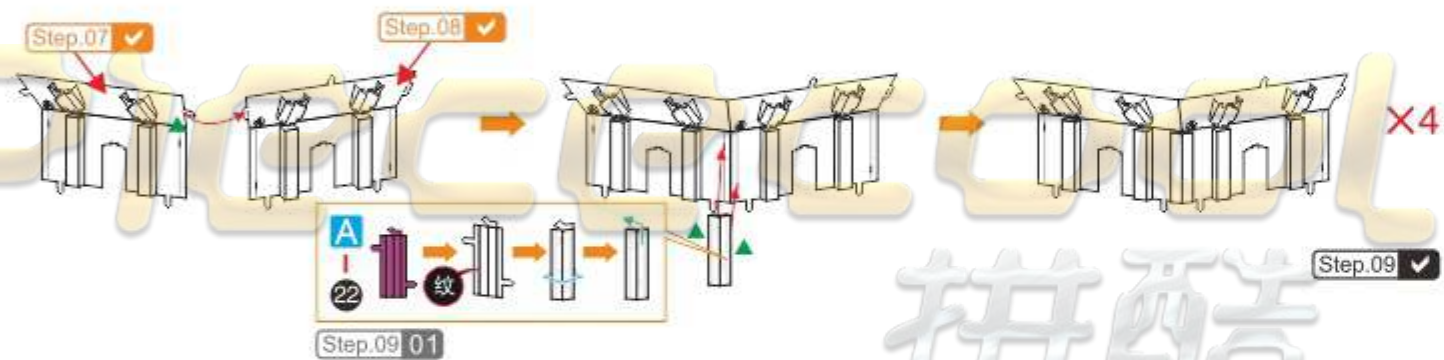




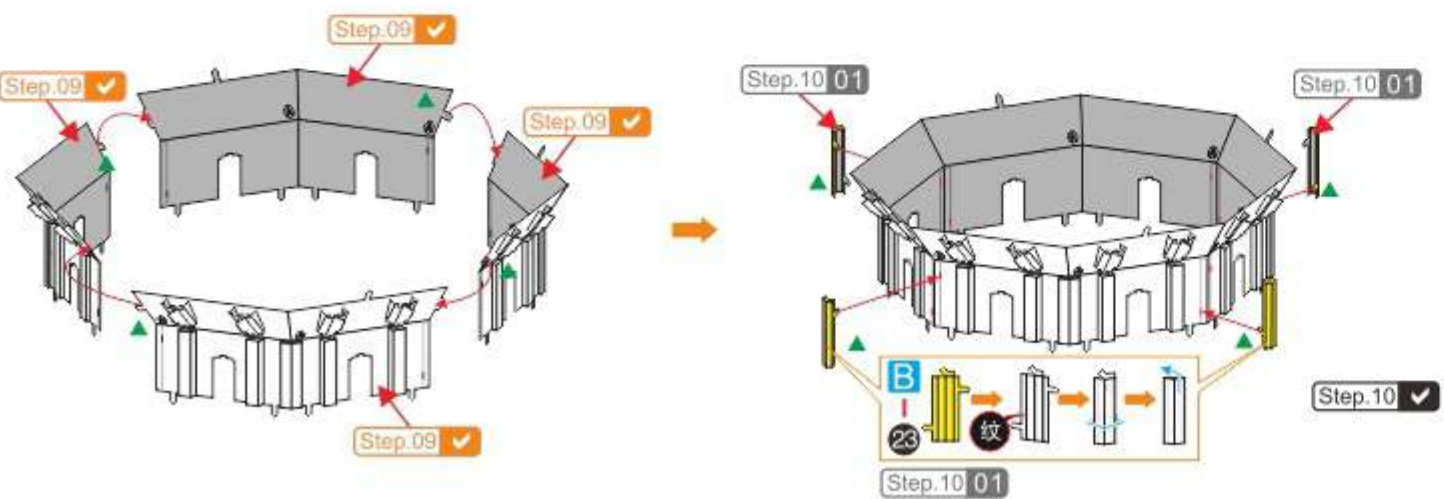
Step 08



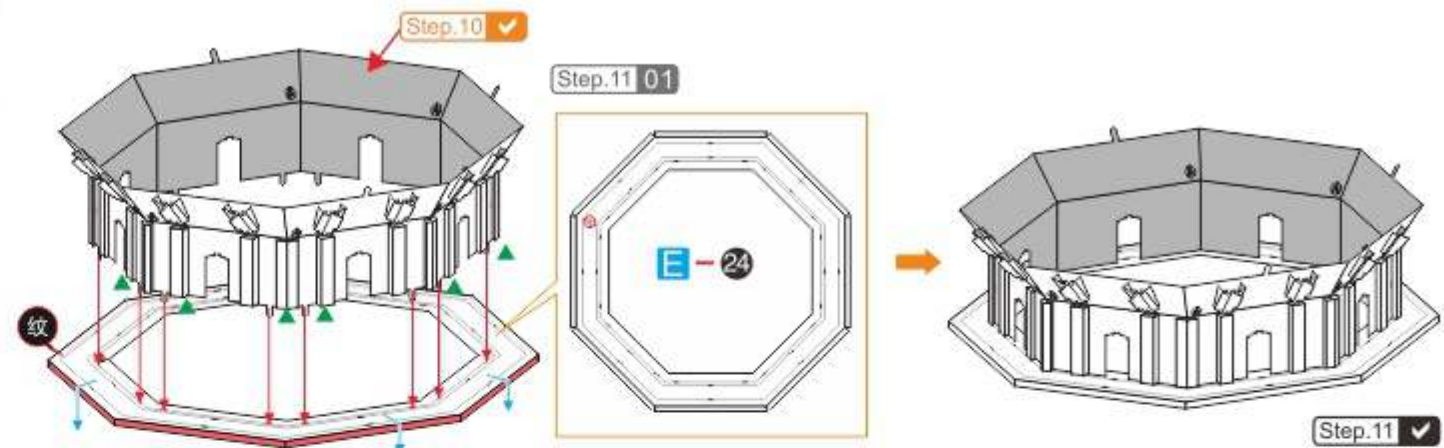
Step 09



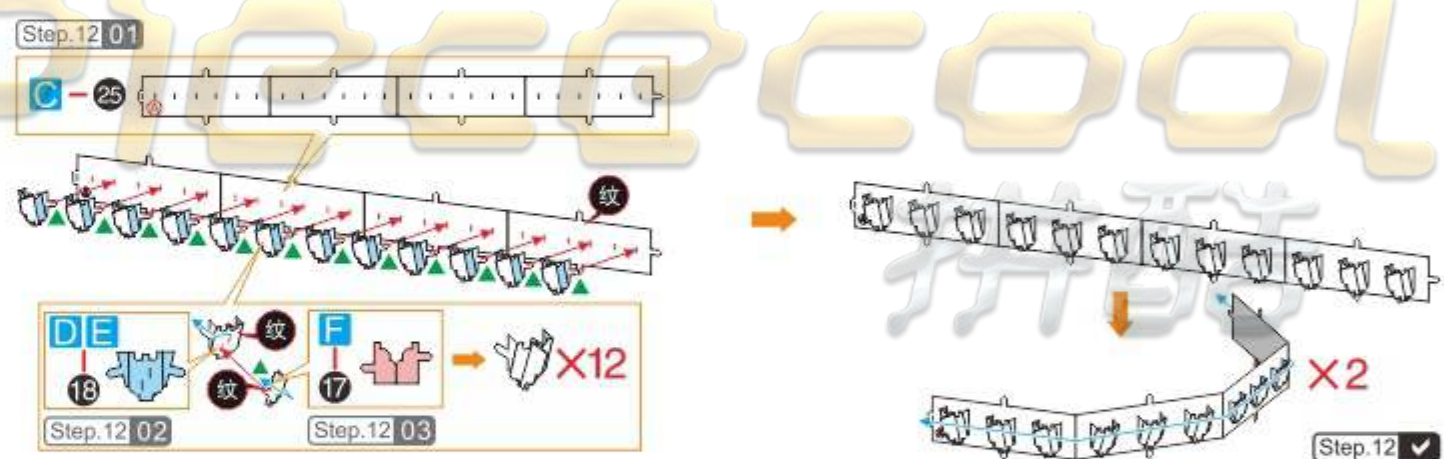
Step 10



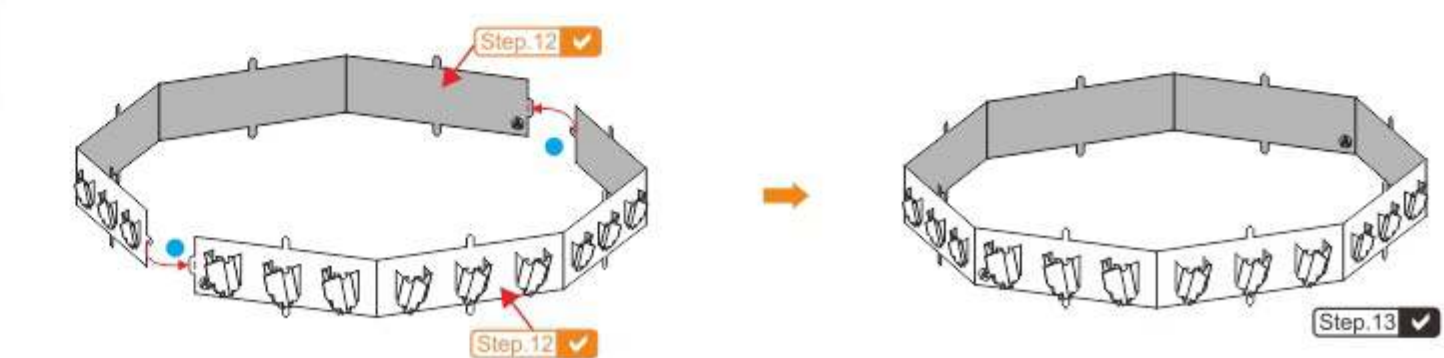
Step 11



Step 12

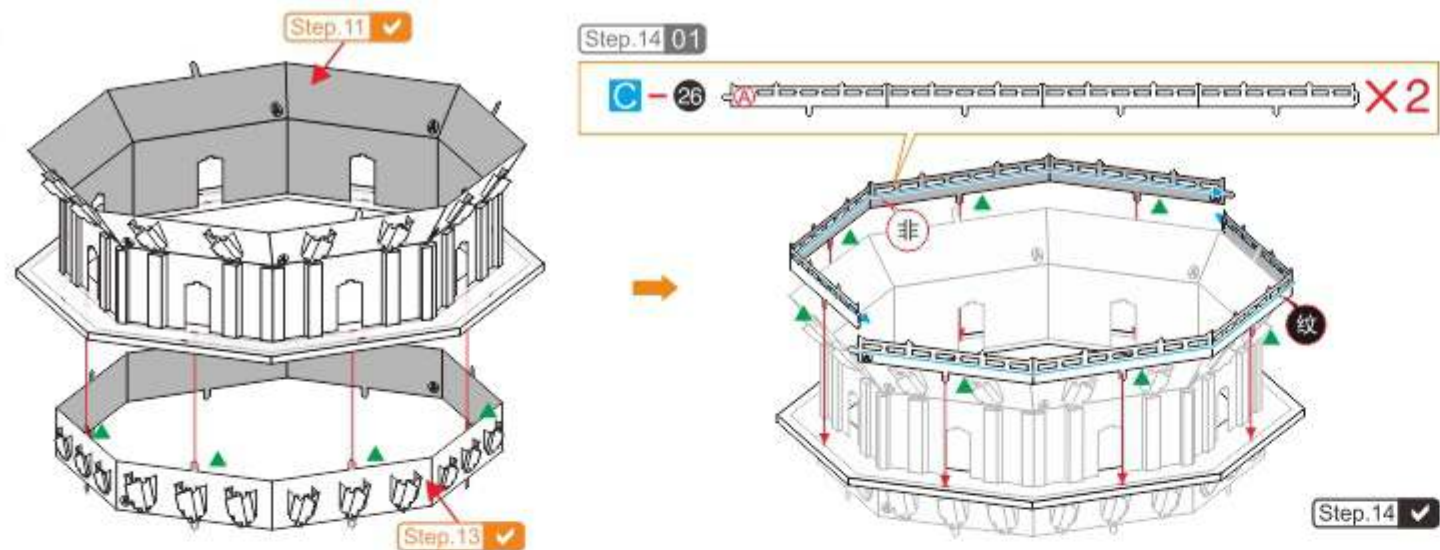


Step 13

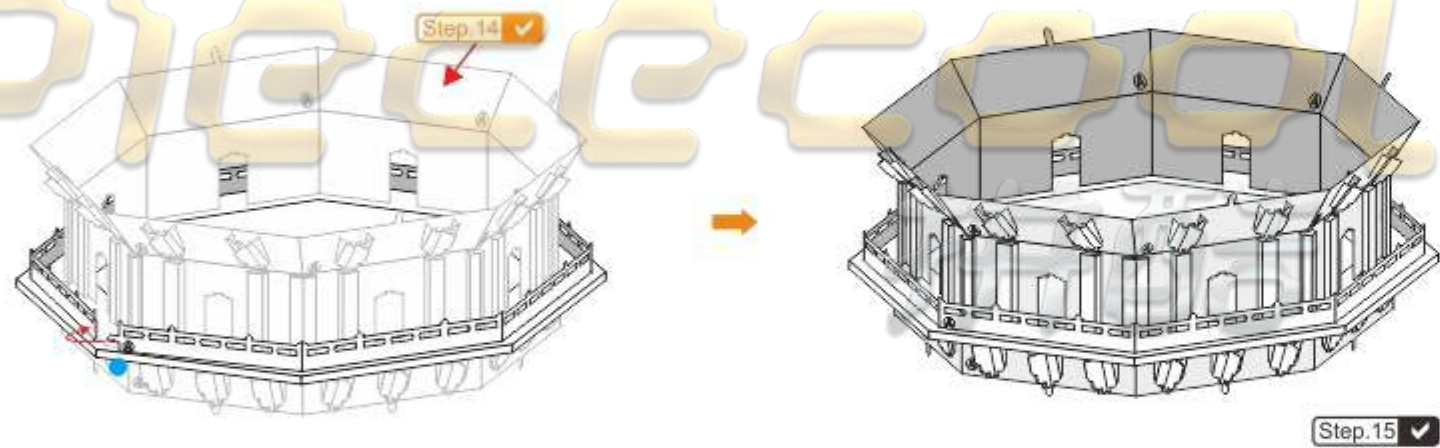




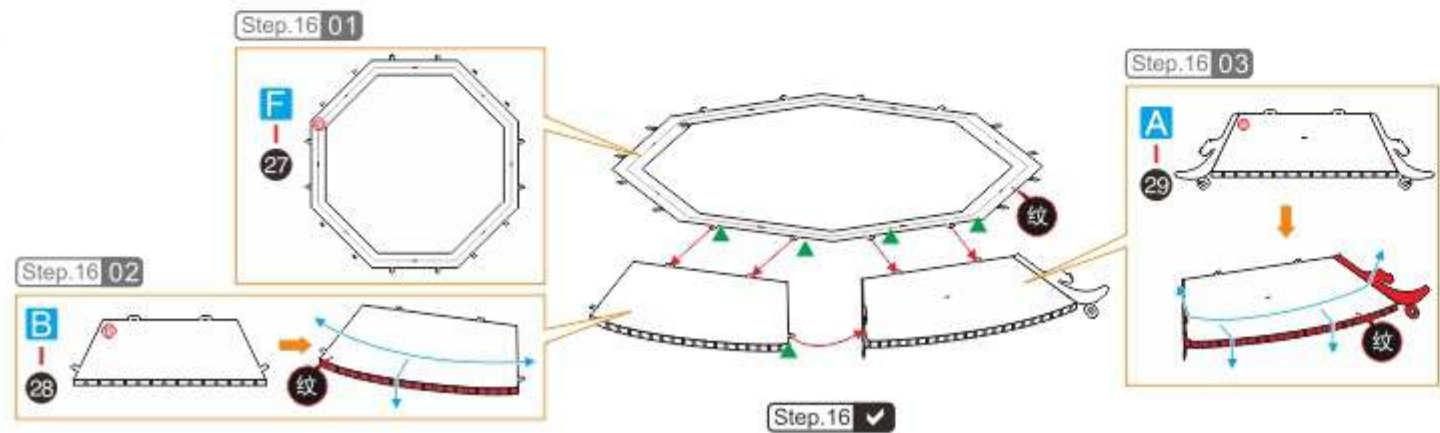
Step  
14



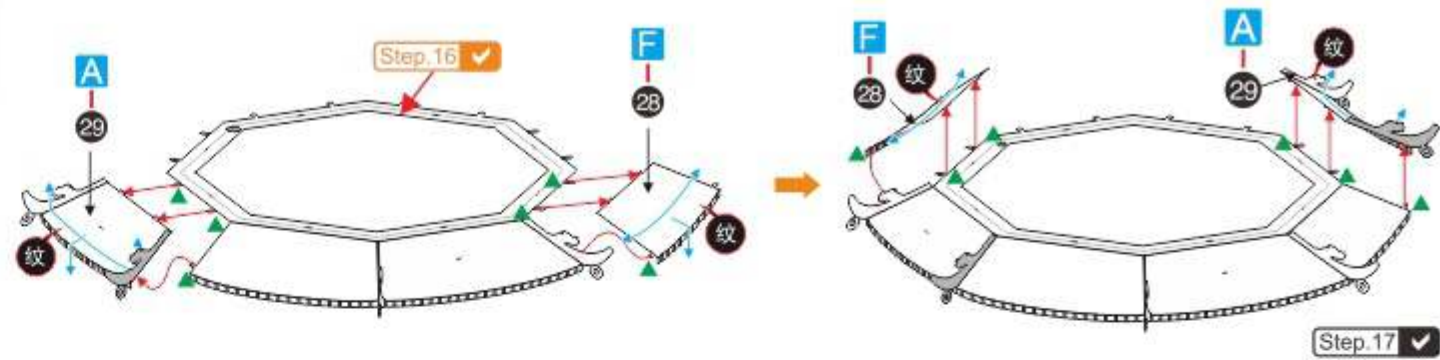
Step  
15



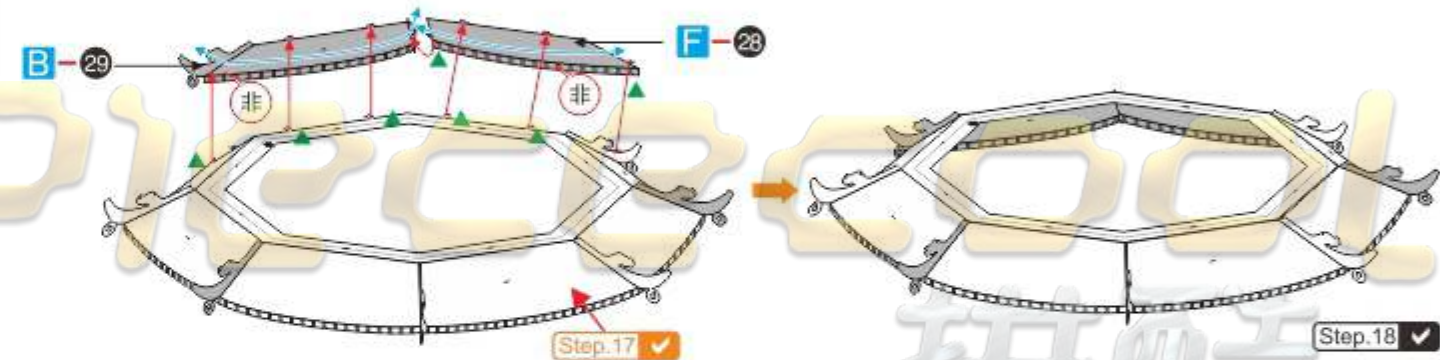
Step  
16



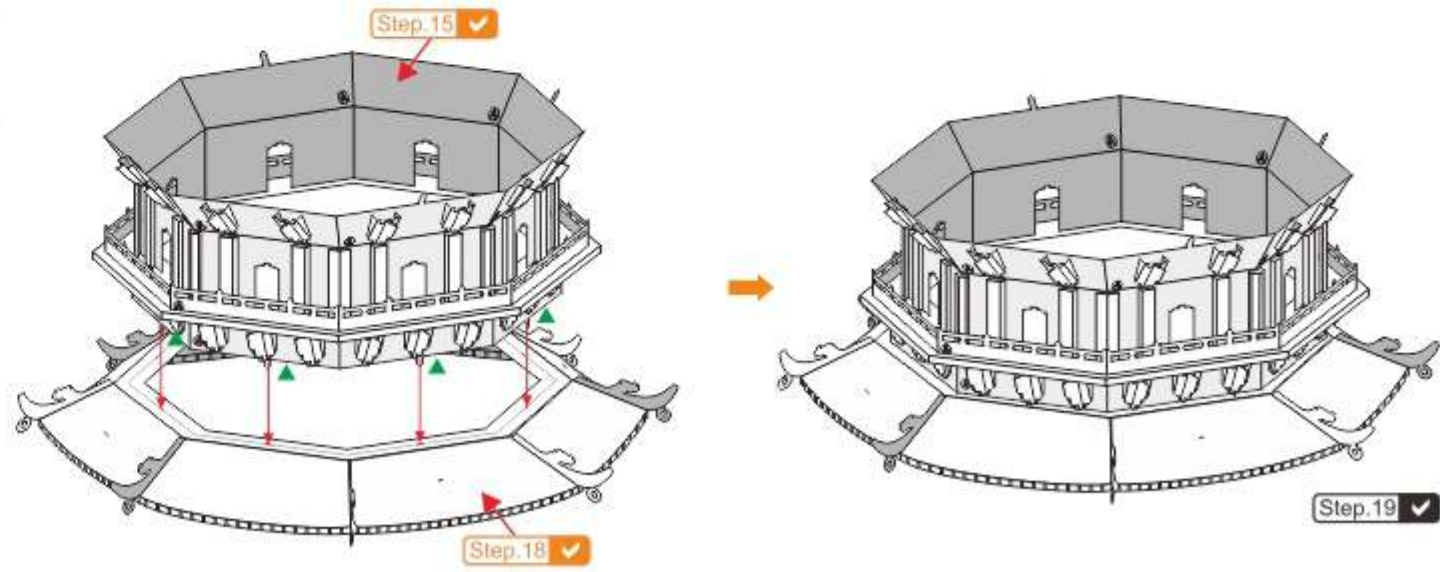
Step  
17



Step  
18

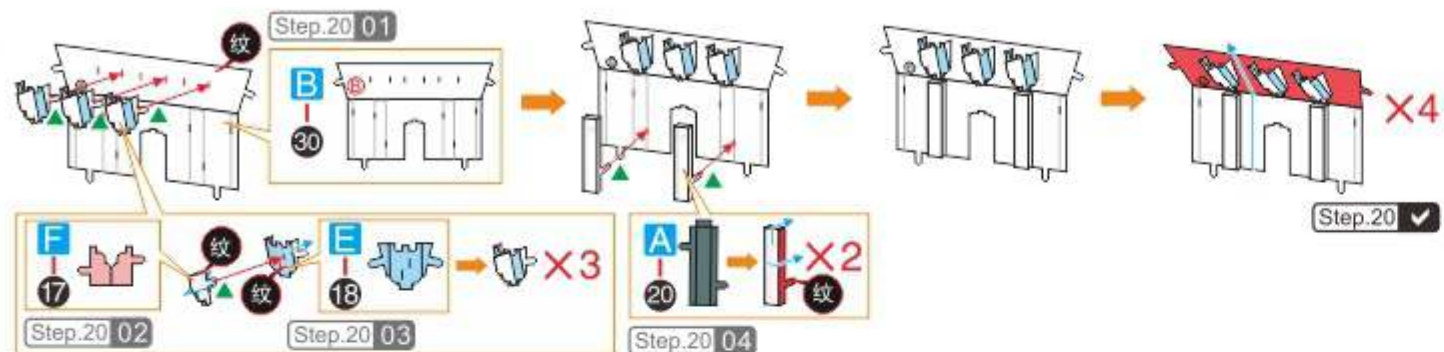


Step  
19

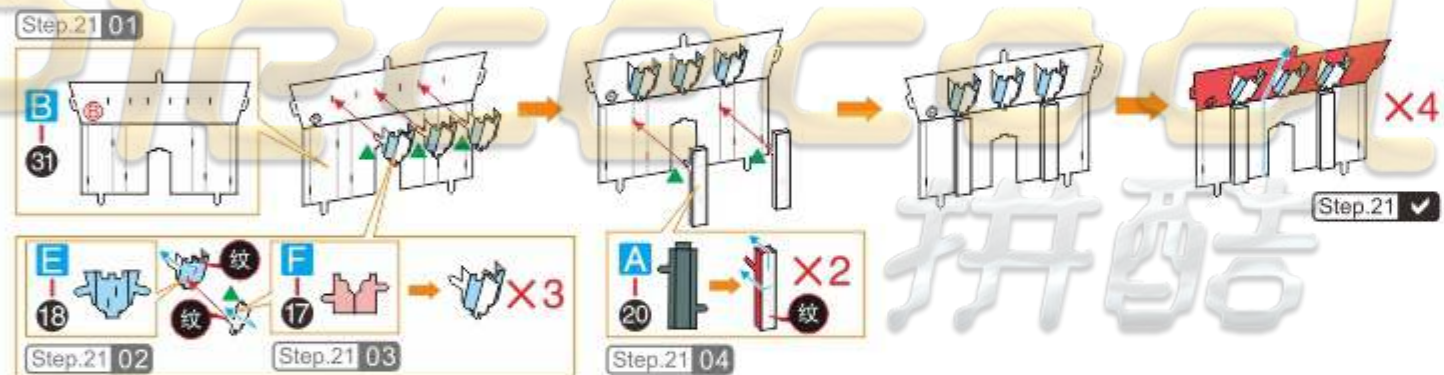




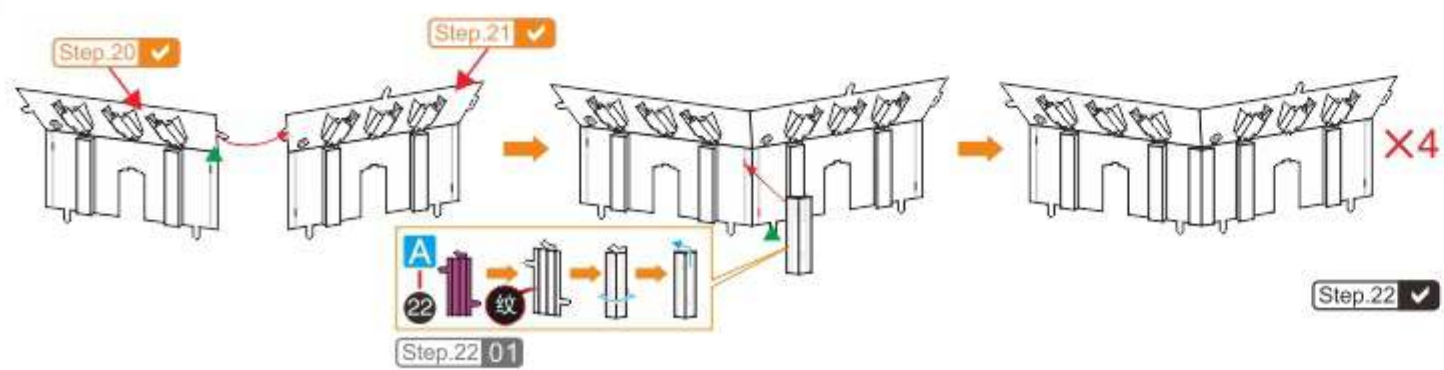
Step 20



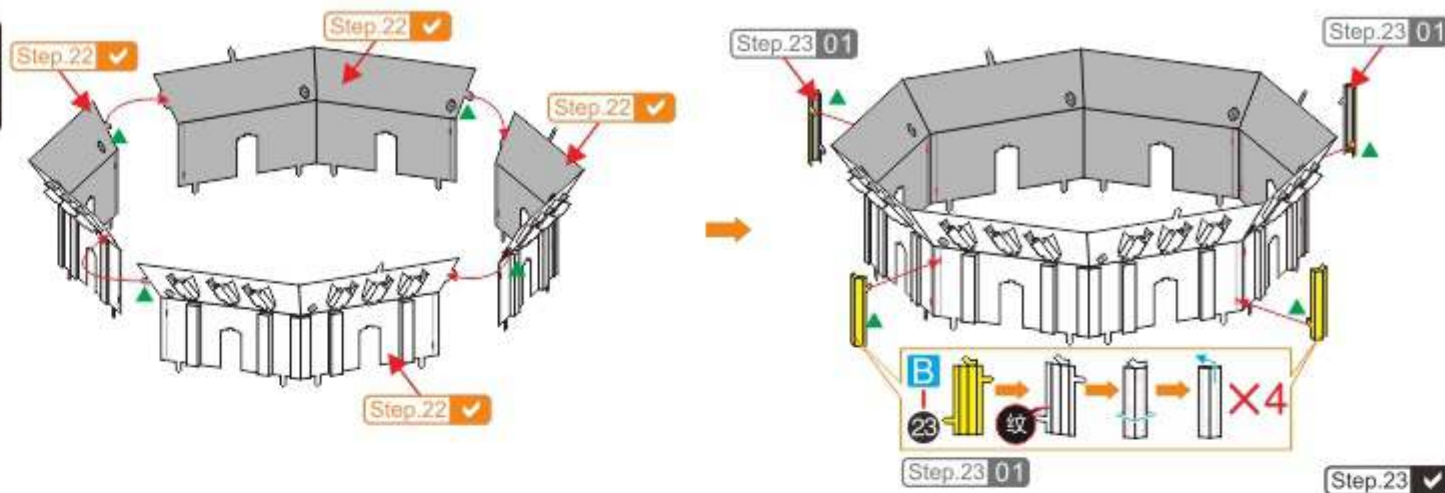
Step 21



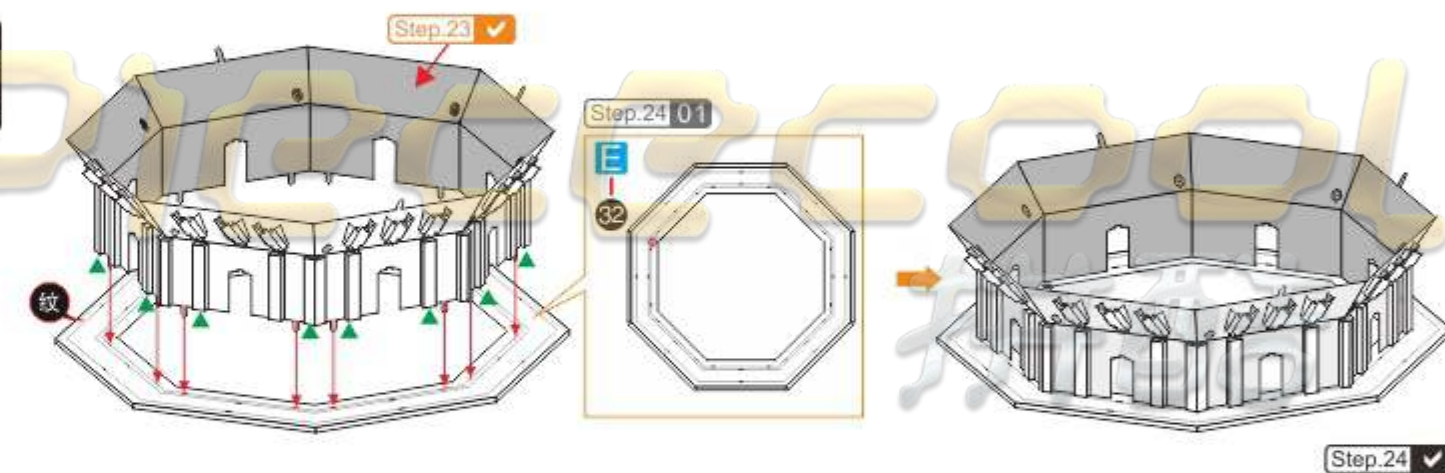
Step 22



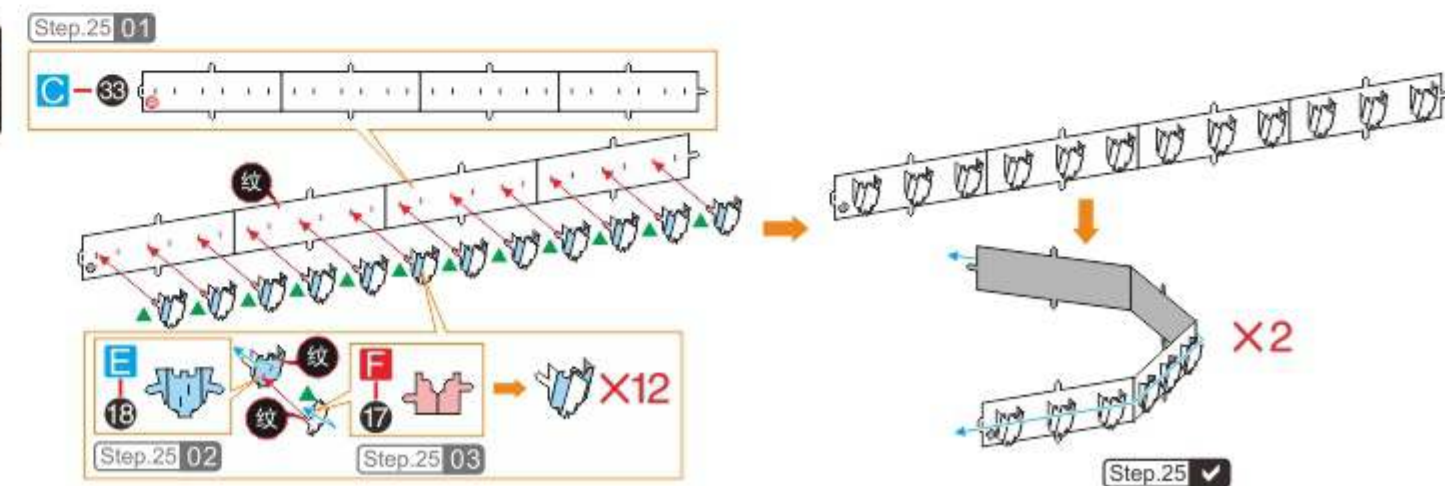
Step 23



Step 24

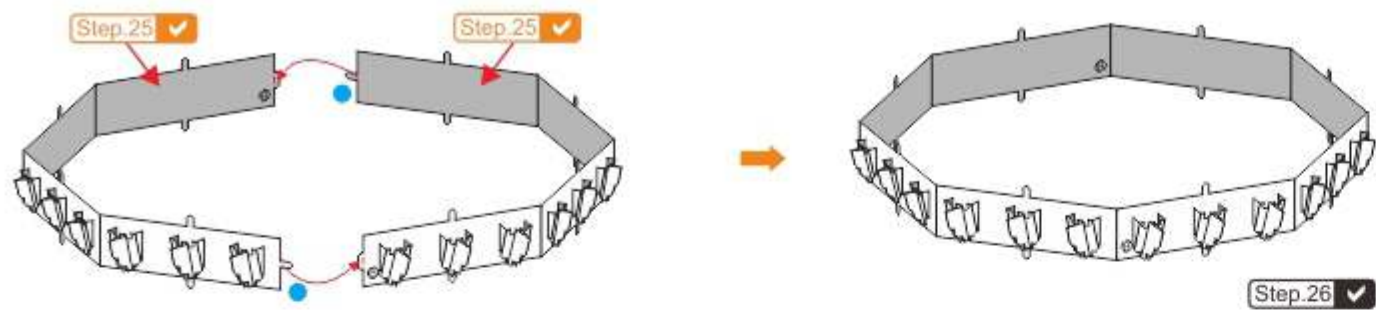


Step 25

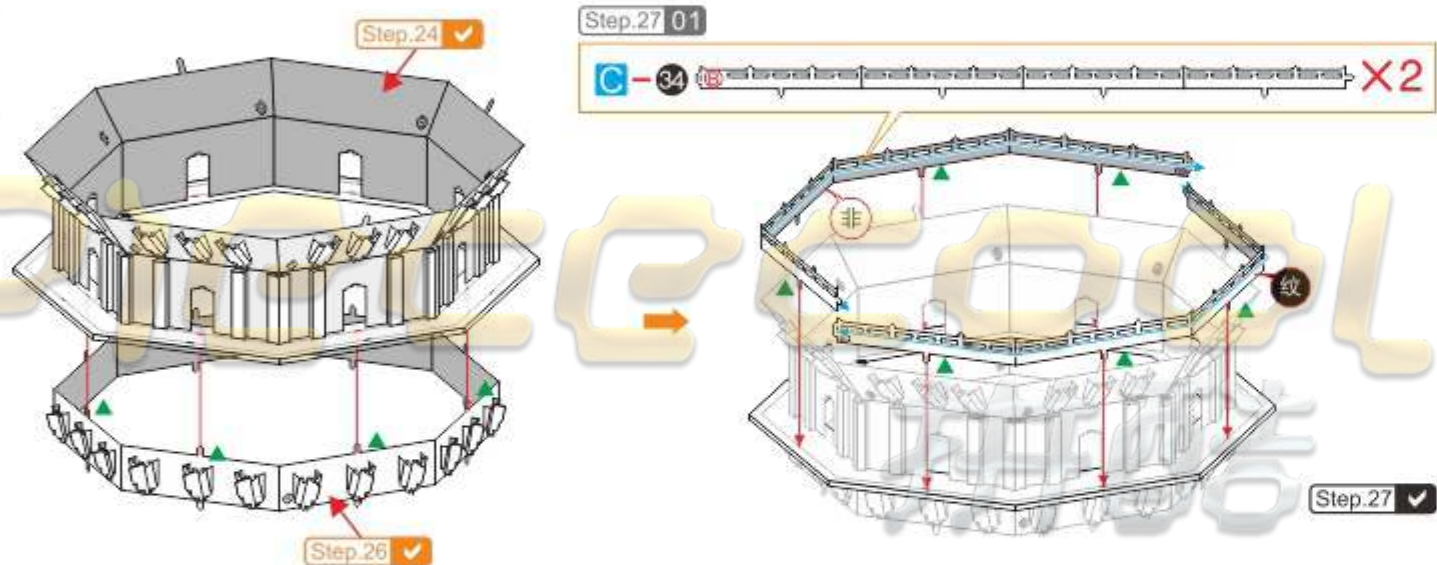




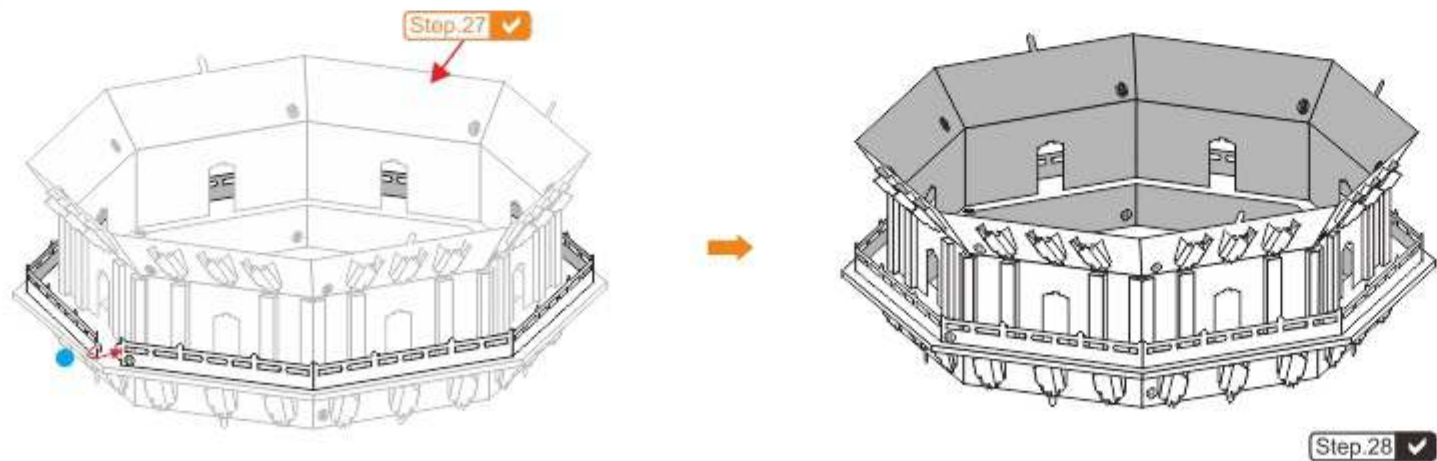
Step  
26



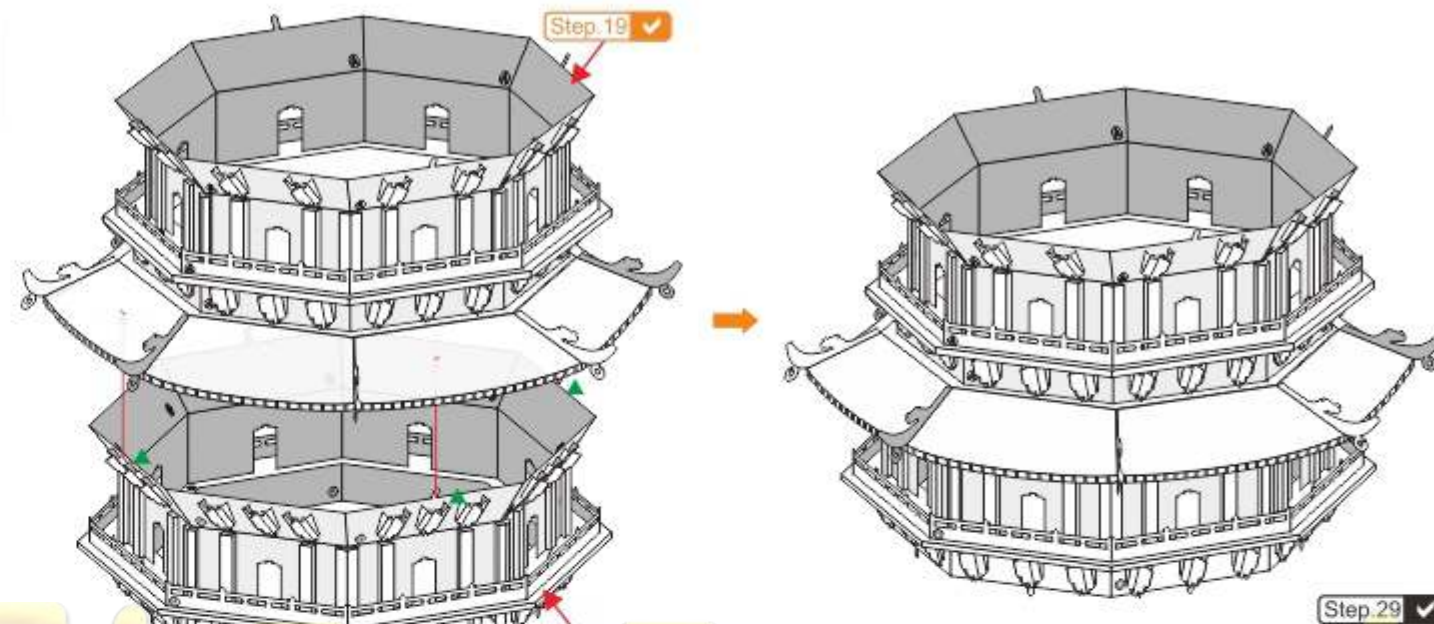
Step  
27



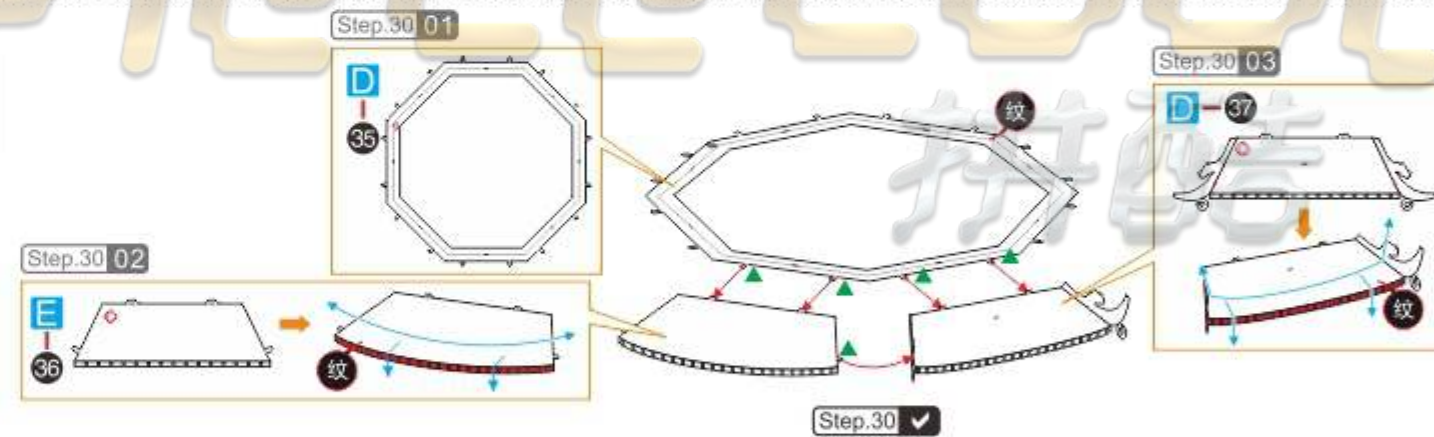
Step  
28



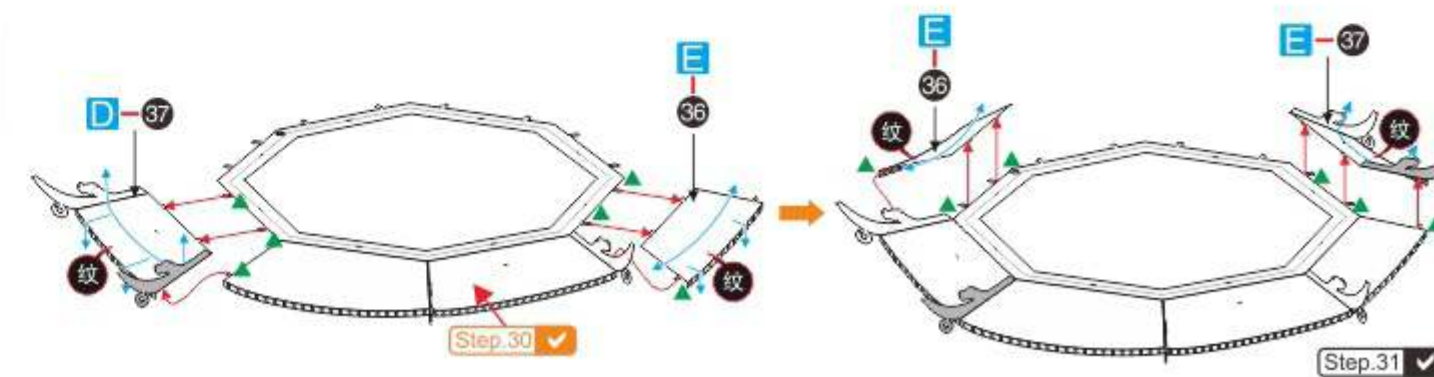
Step  
29



Step  
30

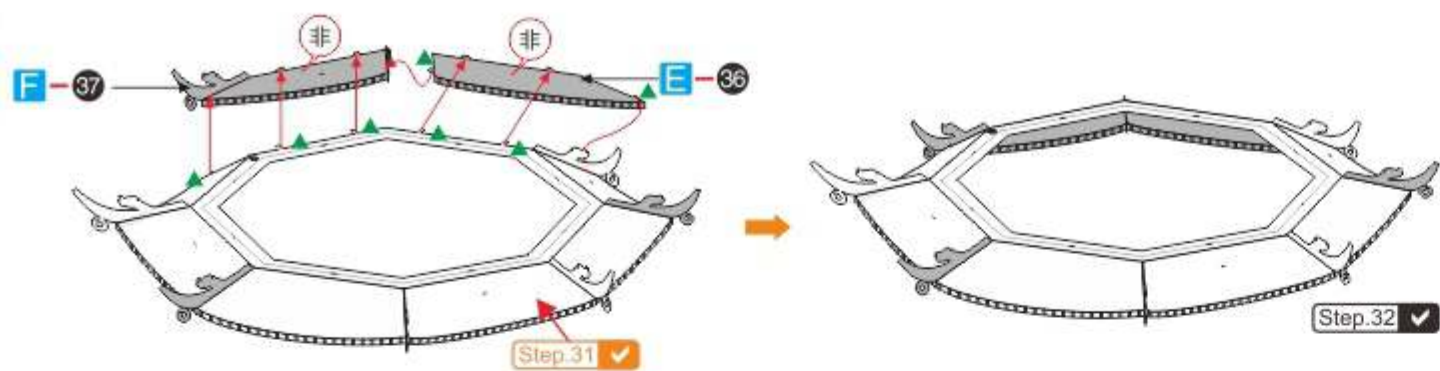


Step  
31

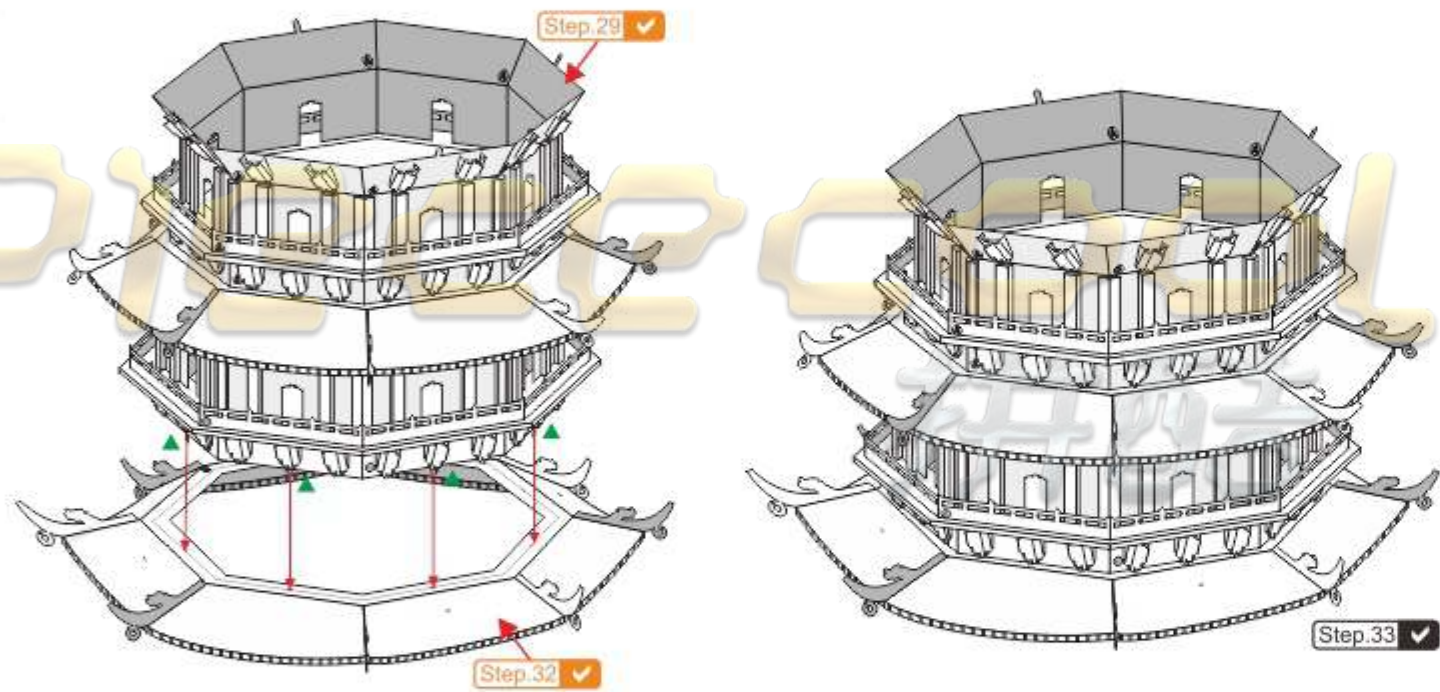




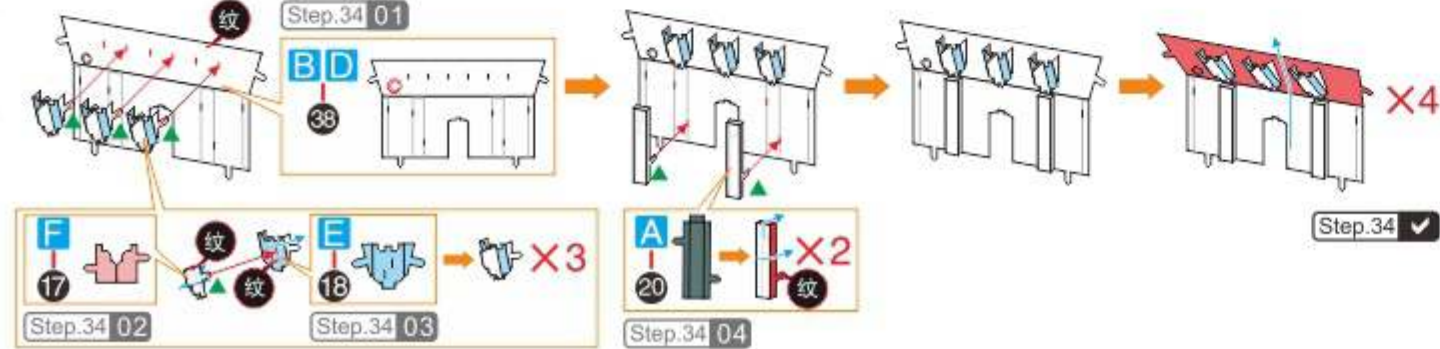
Step  
32



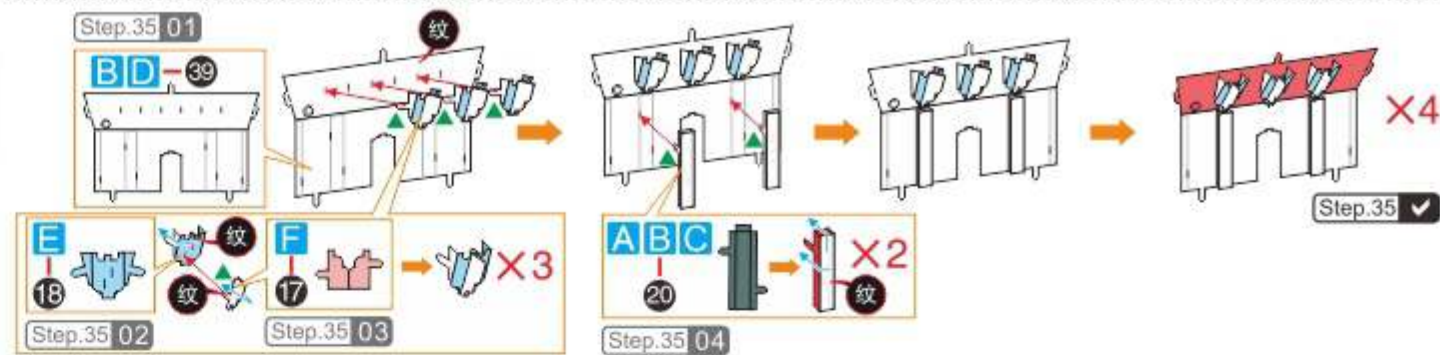
Step  
33



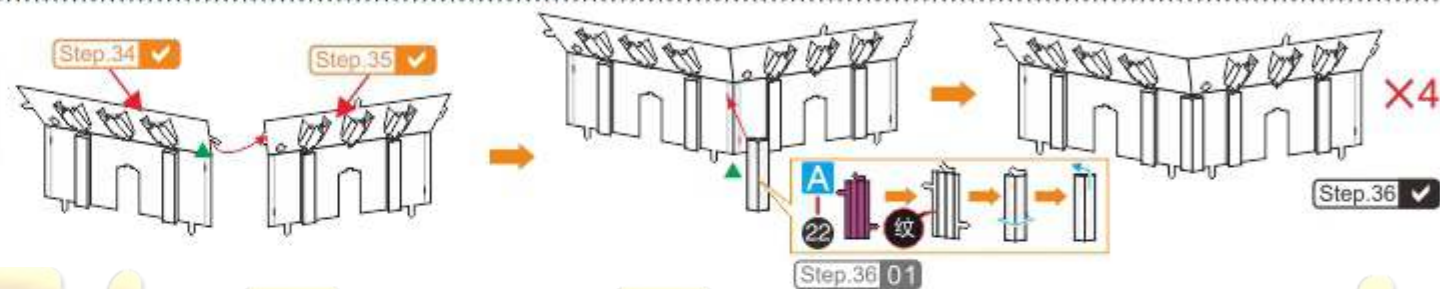
Step  
34



Step  
35



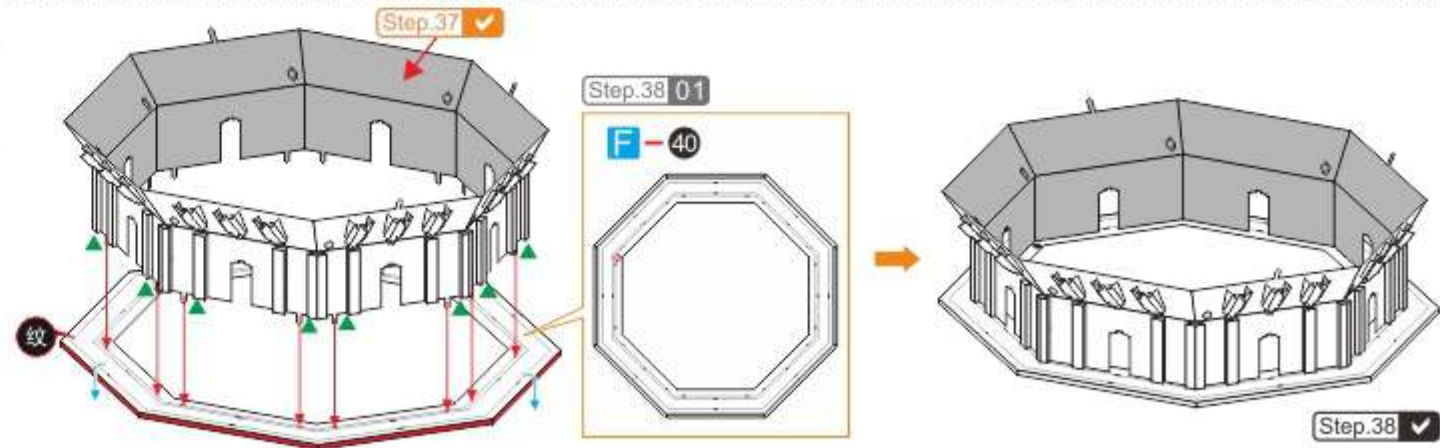
Step  
36



Step  
37

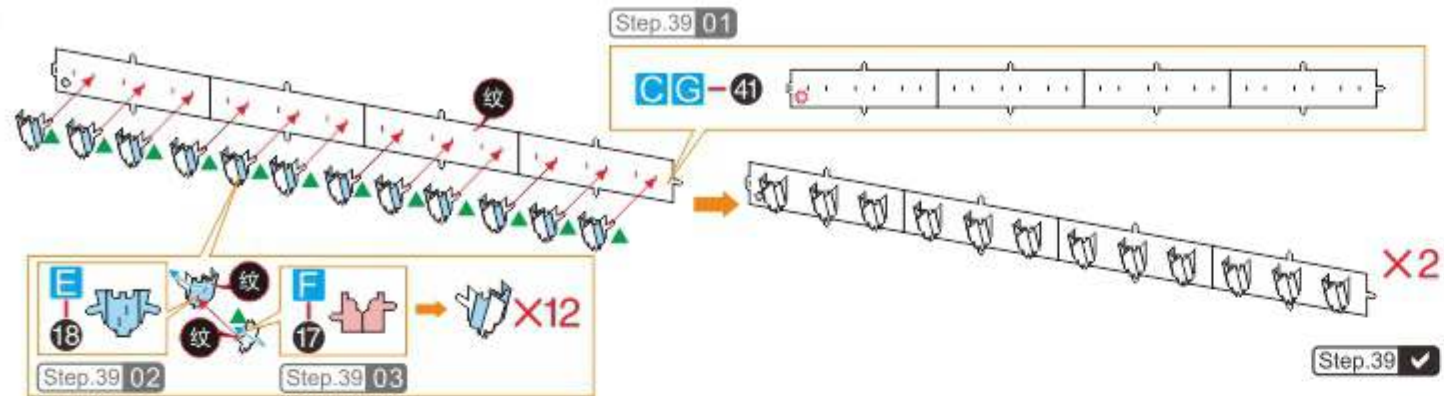


Step  
38

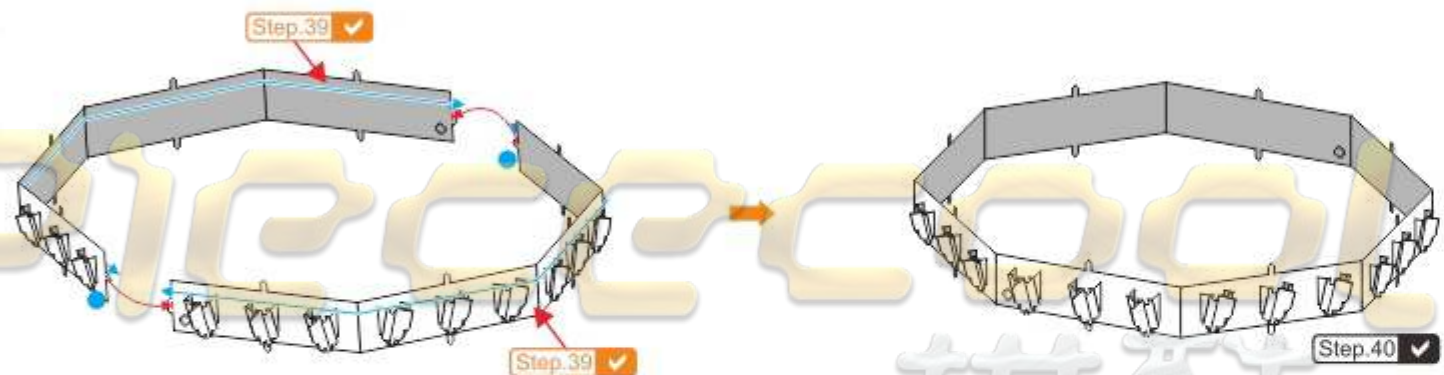




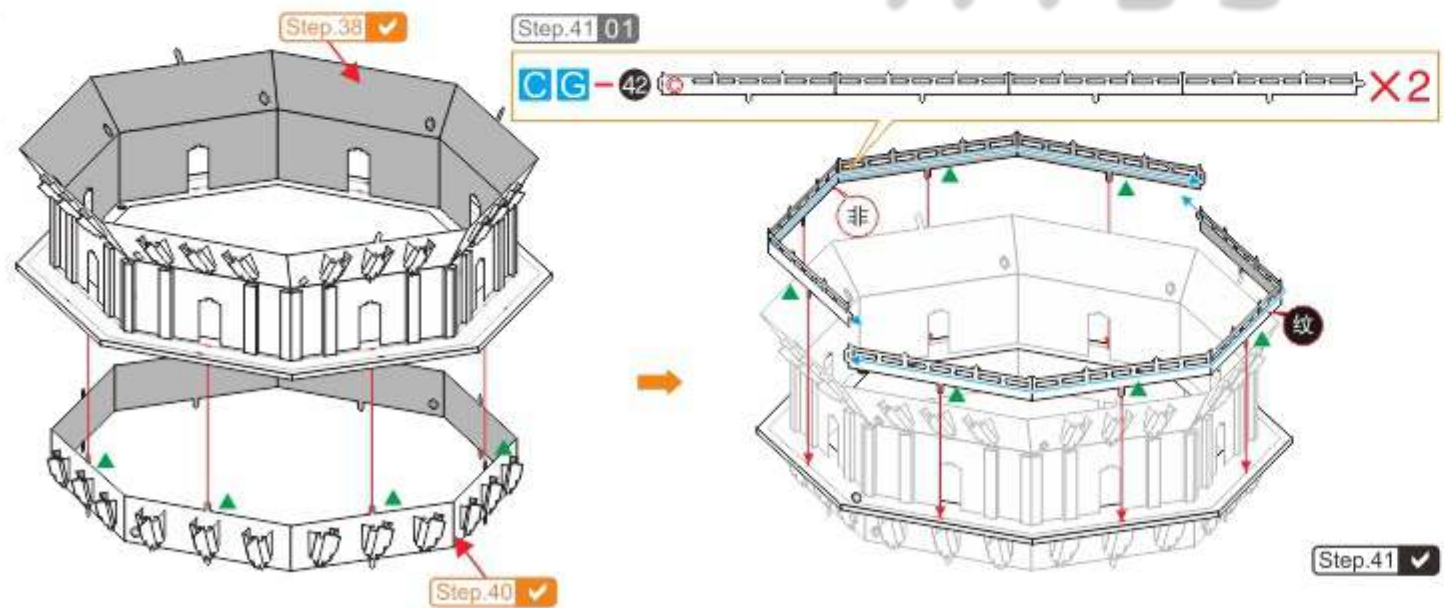
Step  
39



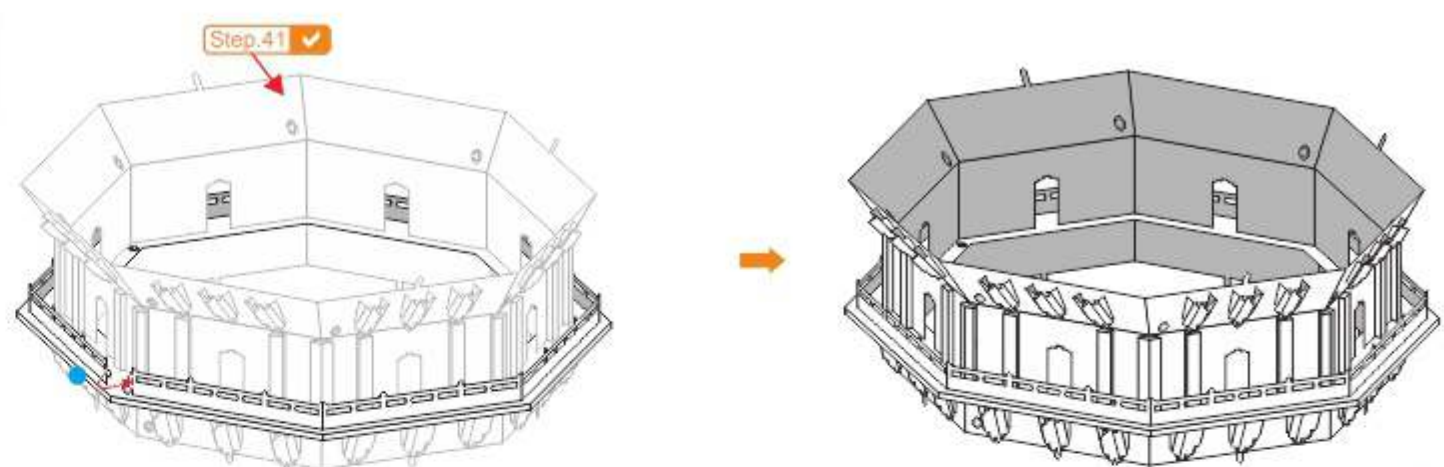
Step  
40



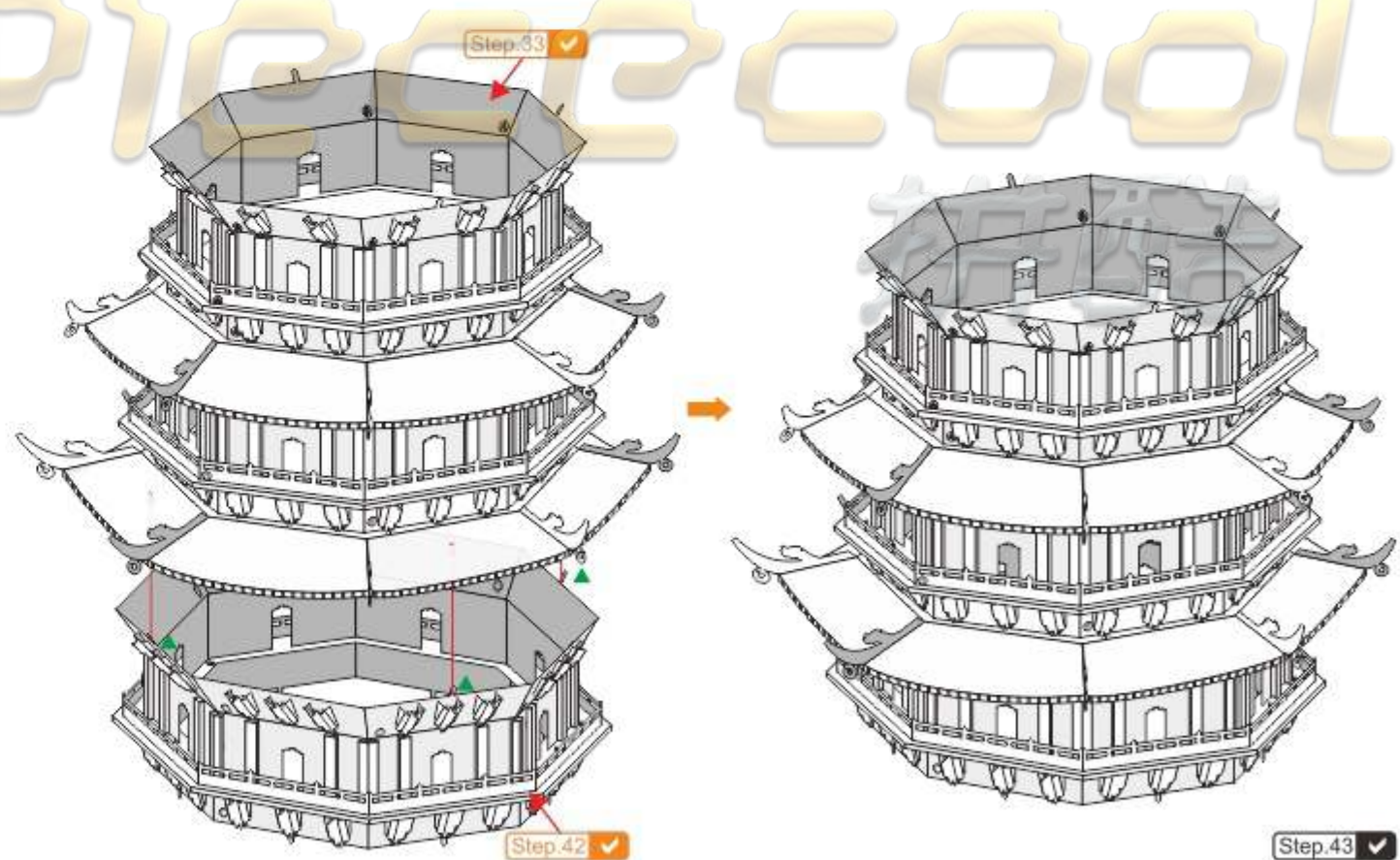
Step  
41



Step  
42

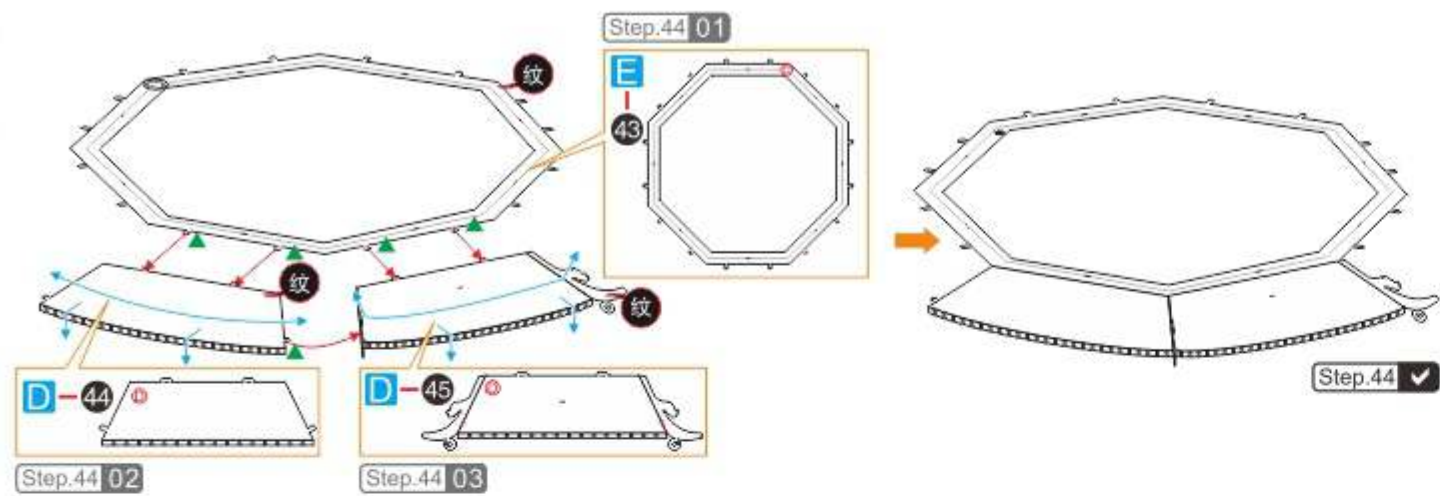


Step  
43

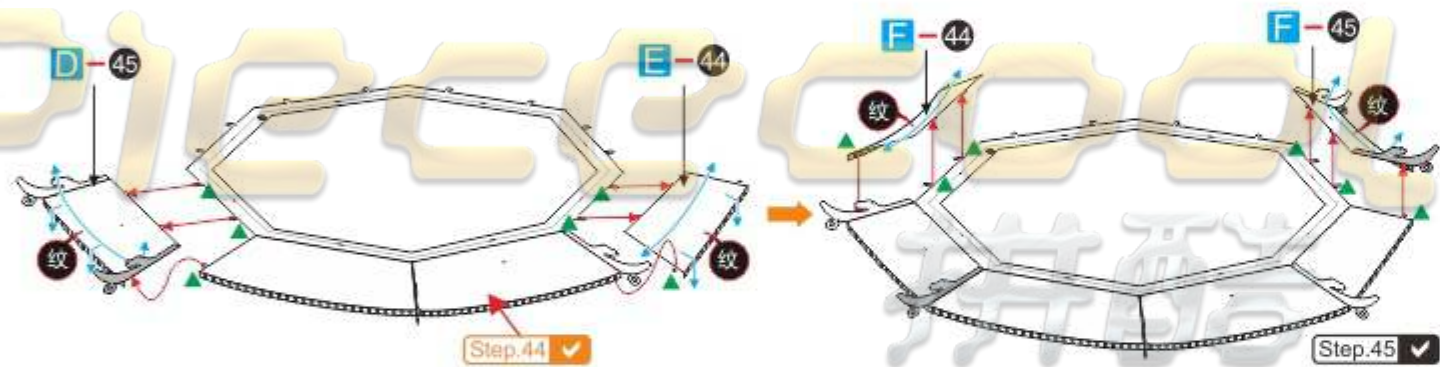




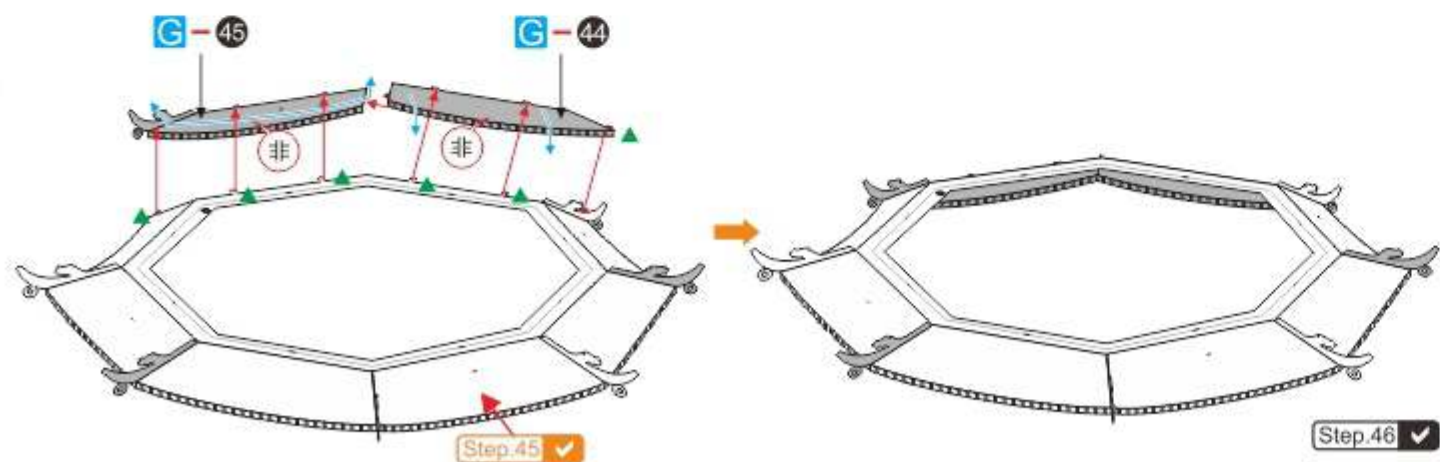
Step  
44



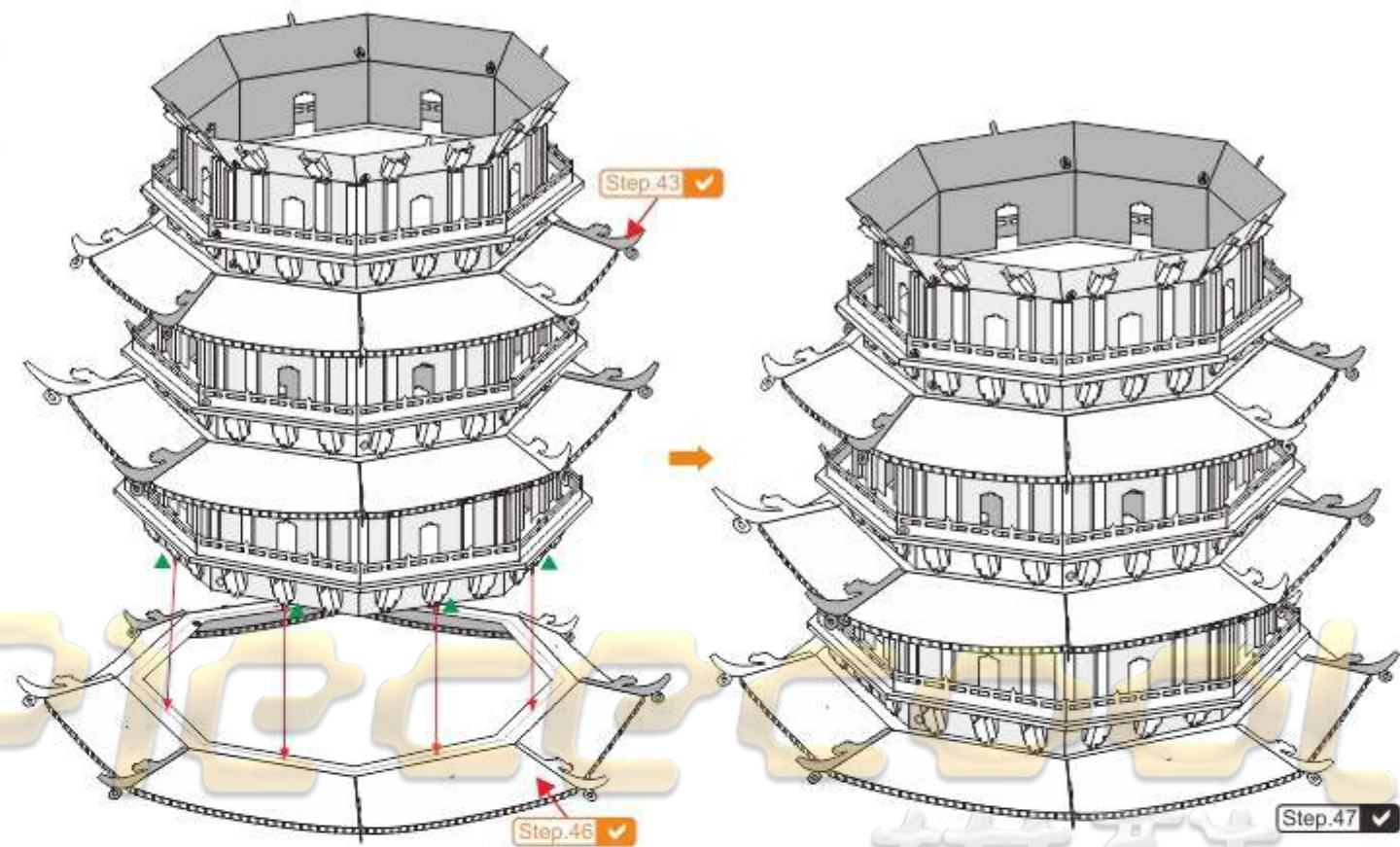
Step  
45



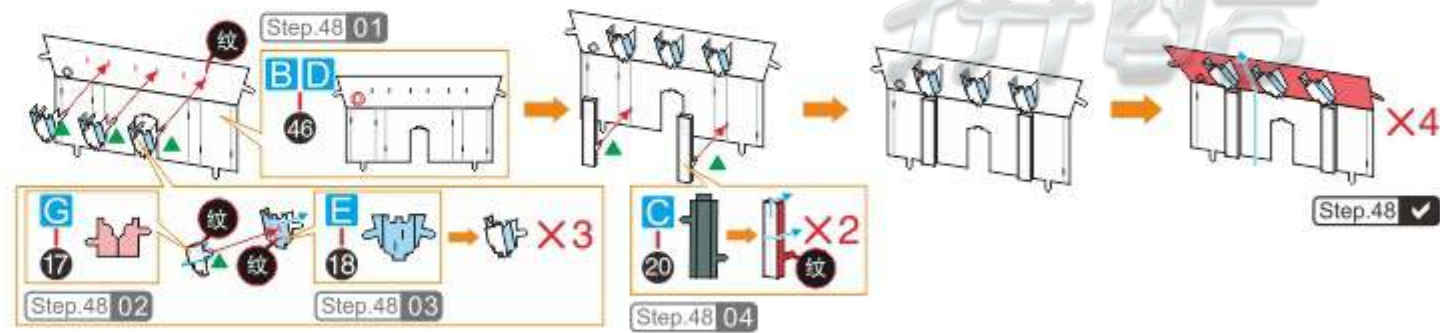
Step  
46



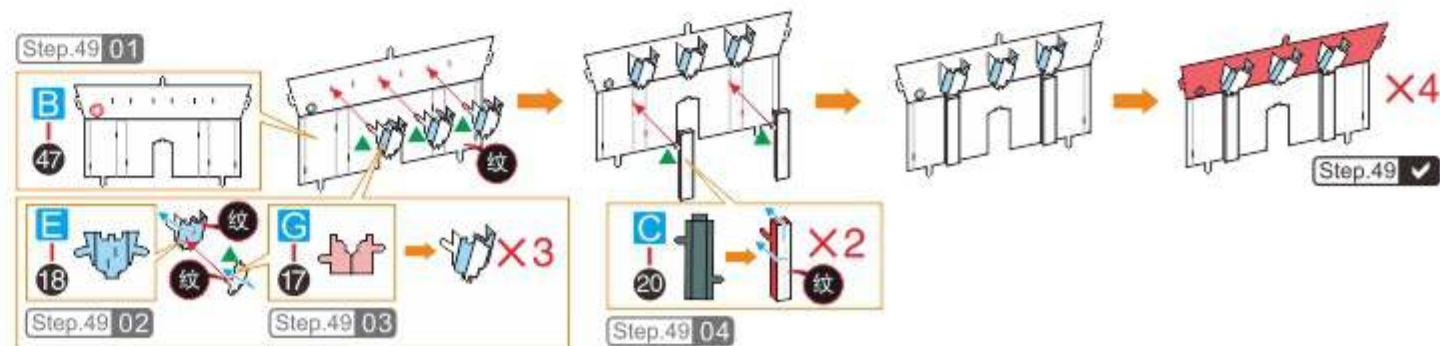
Step  
47



Step  
48

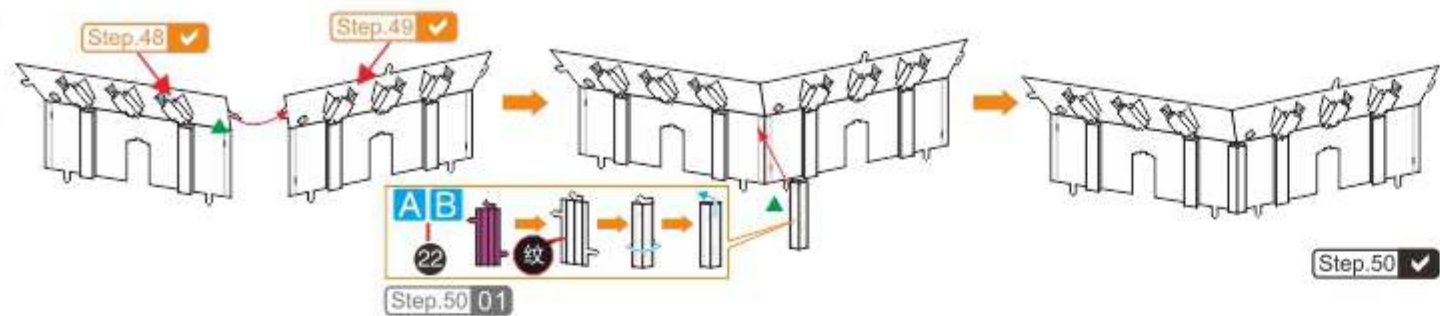


Step  
49

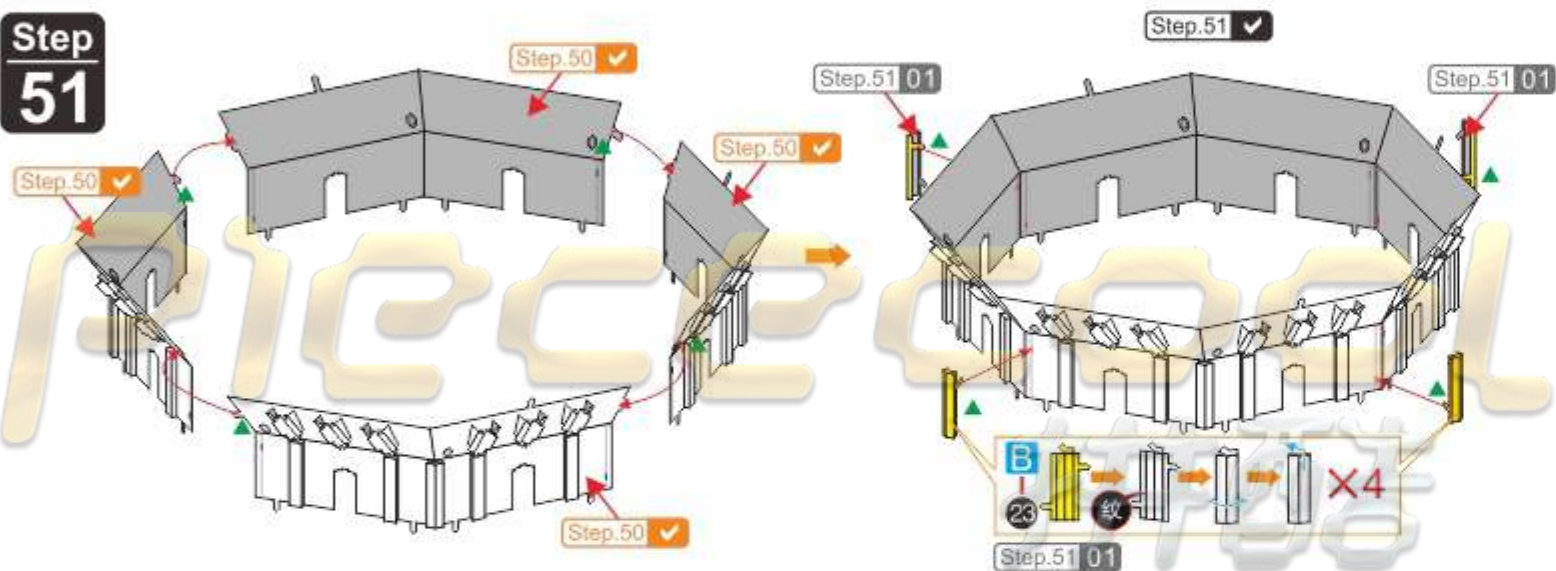




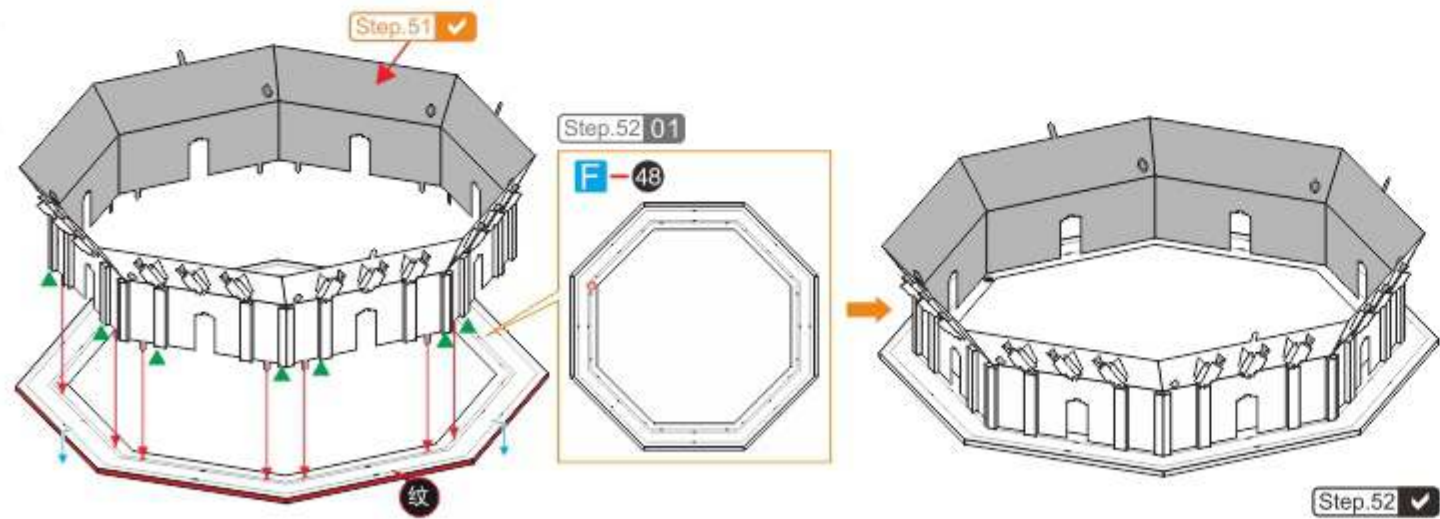
Step  
50



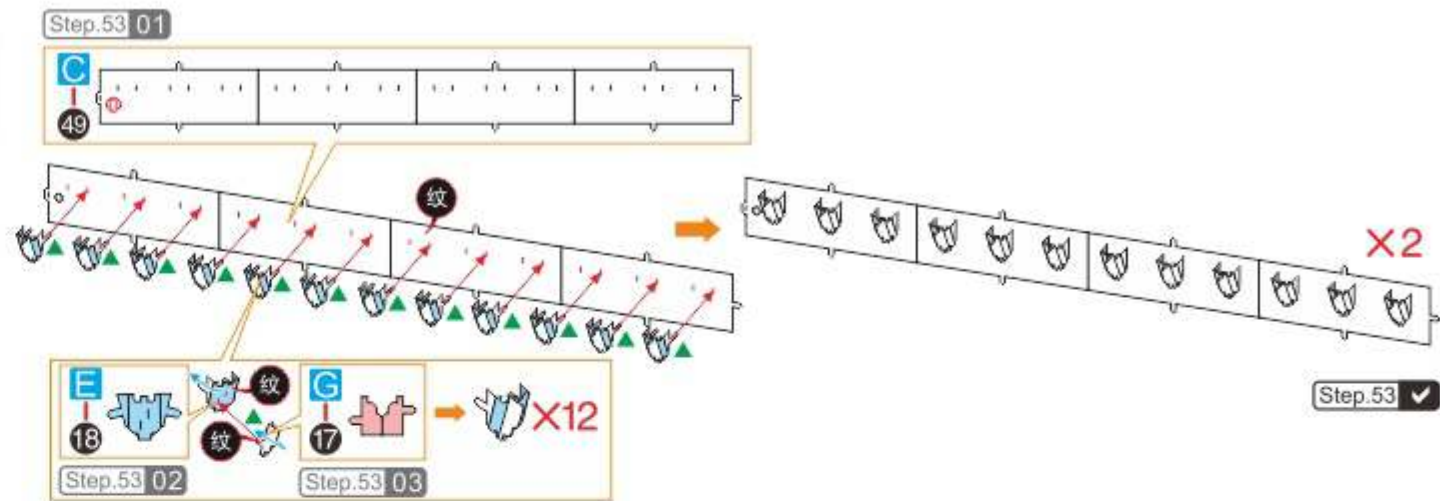
Step  
51



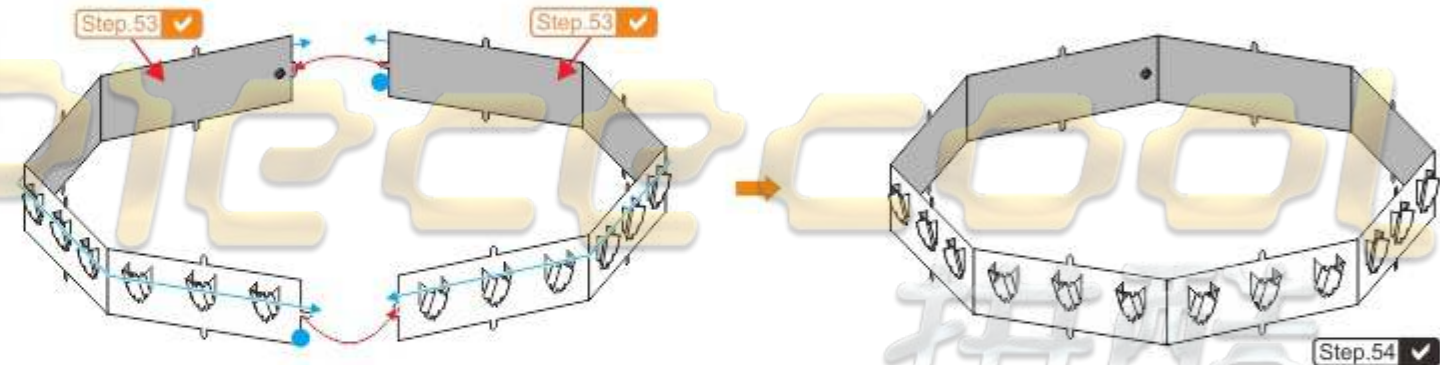
Step  
52



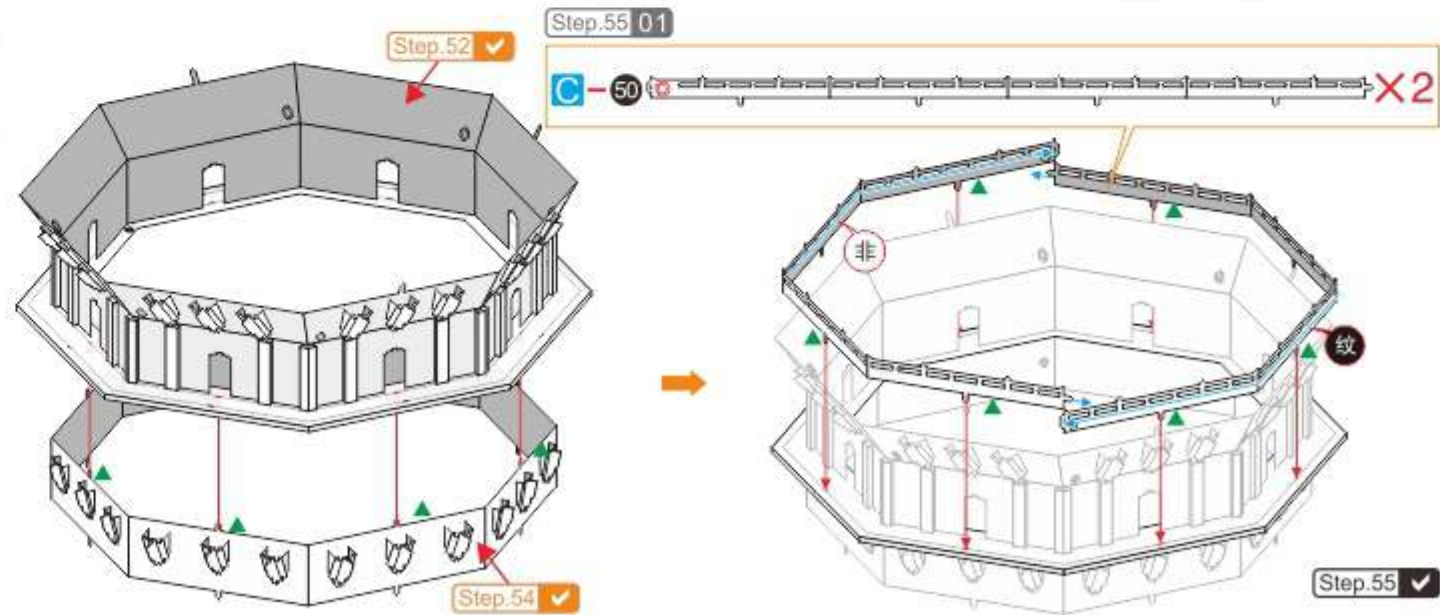
Step  
53



Step  
54

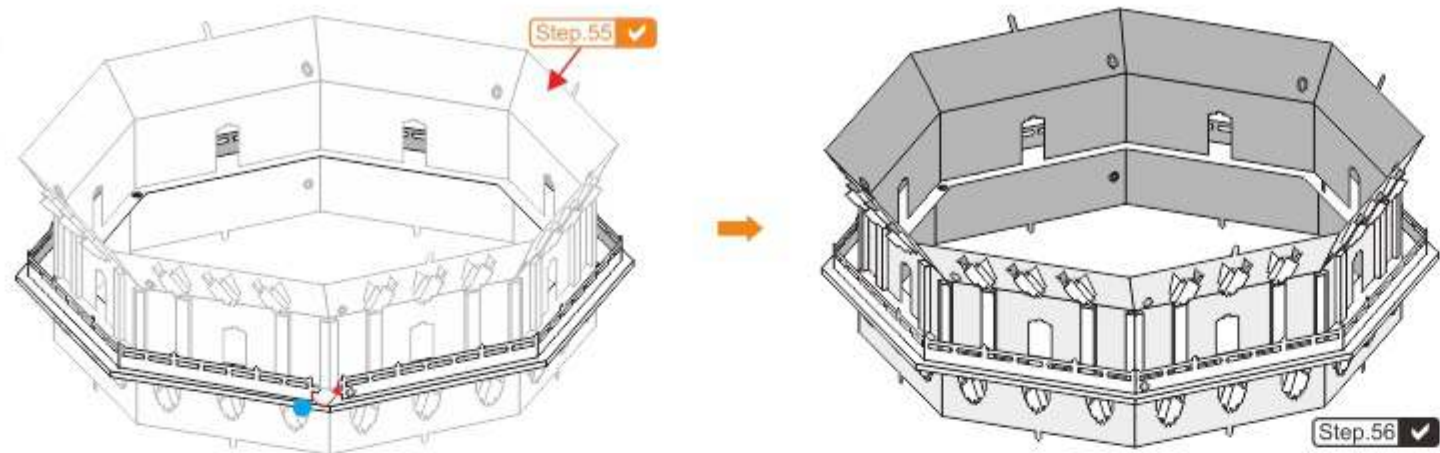


Step  
55

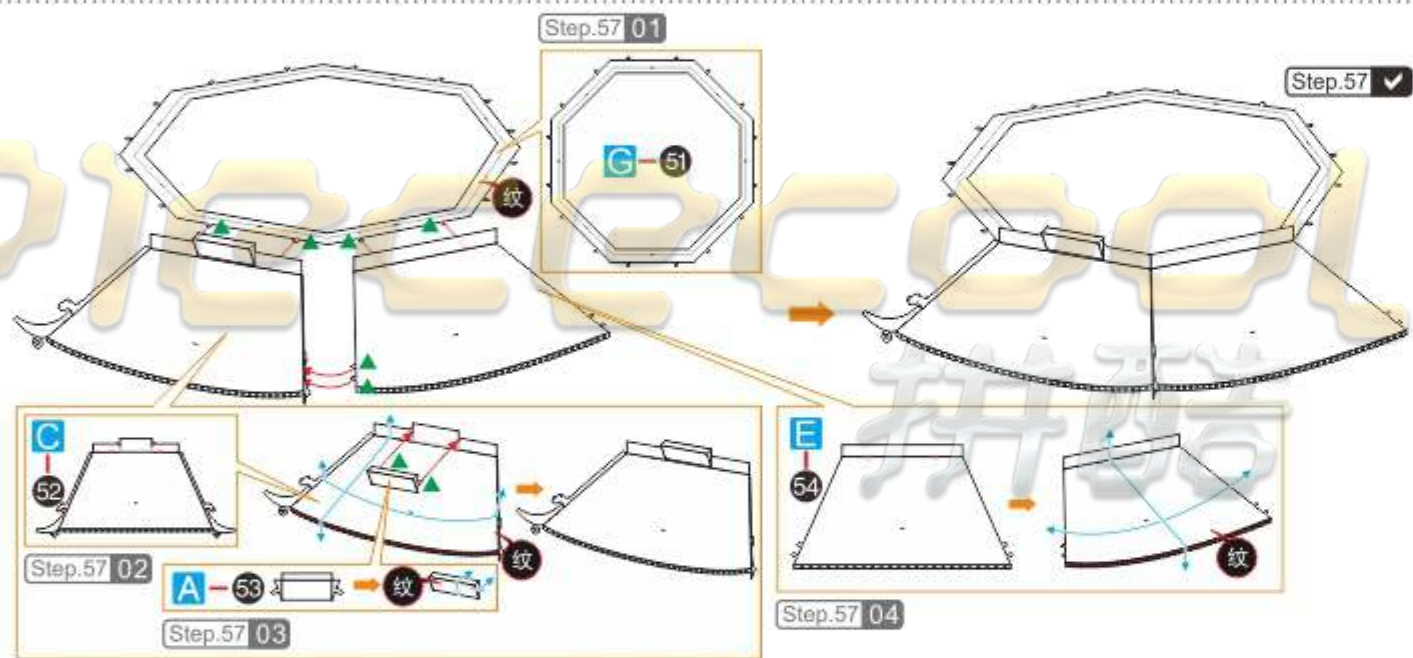




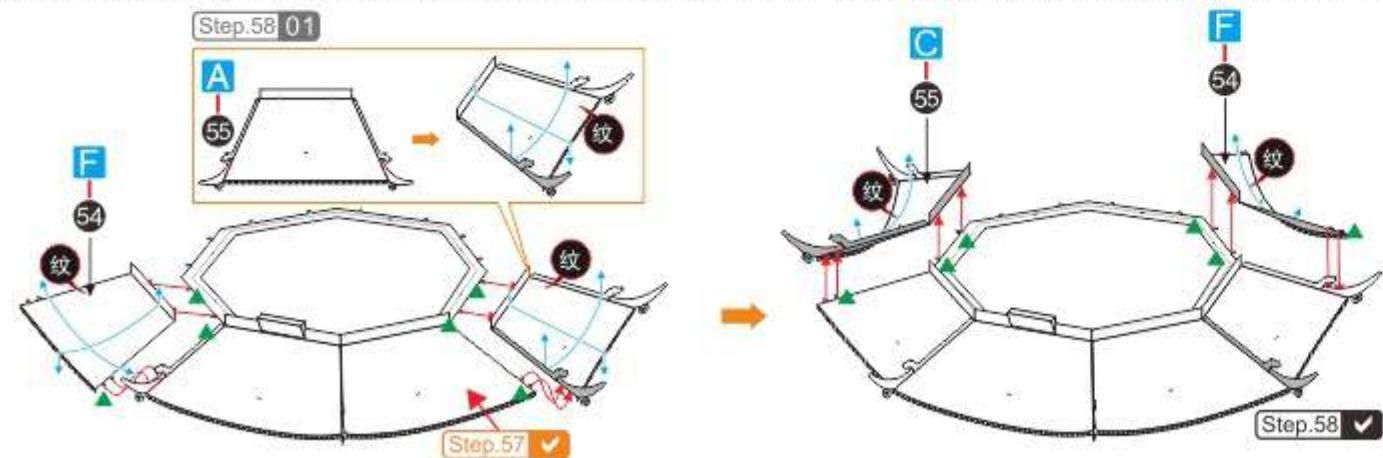
Step  
56



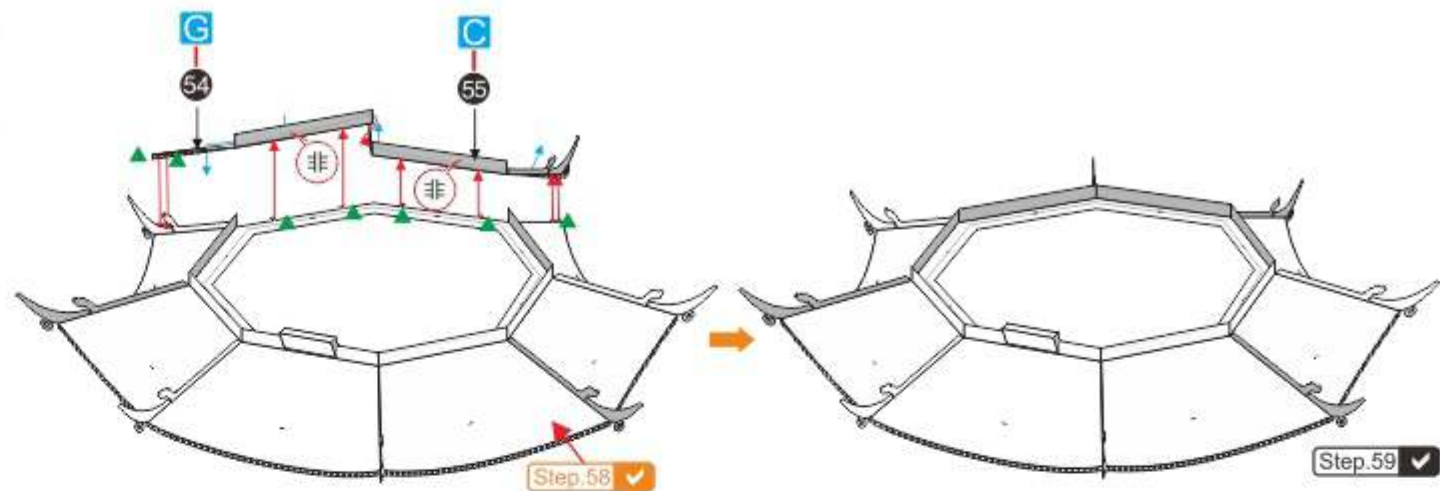
Step  
57



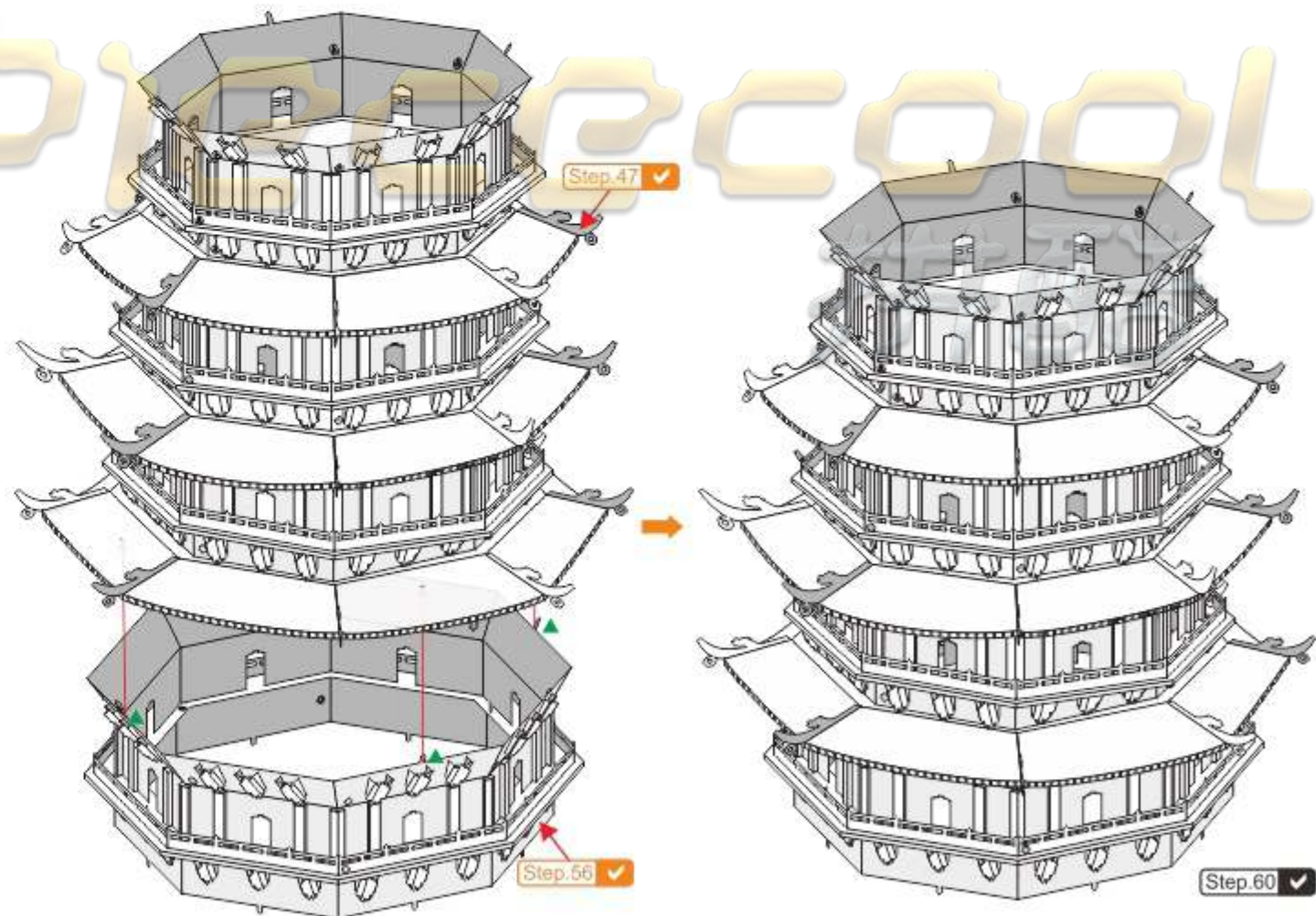
Step  
58



Step  
59

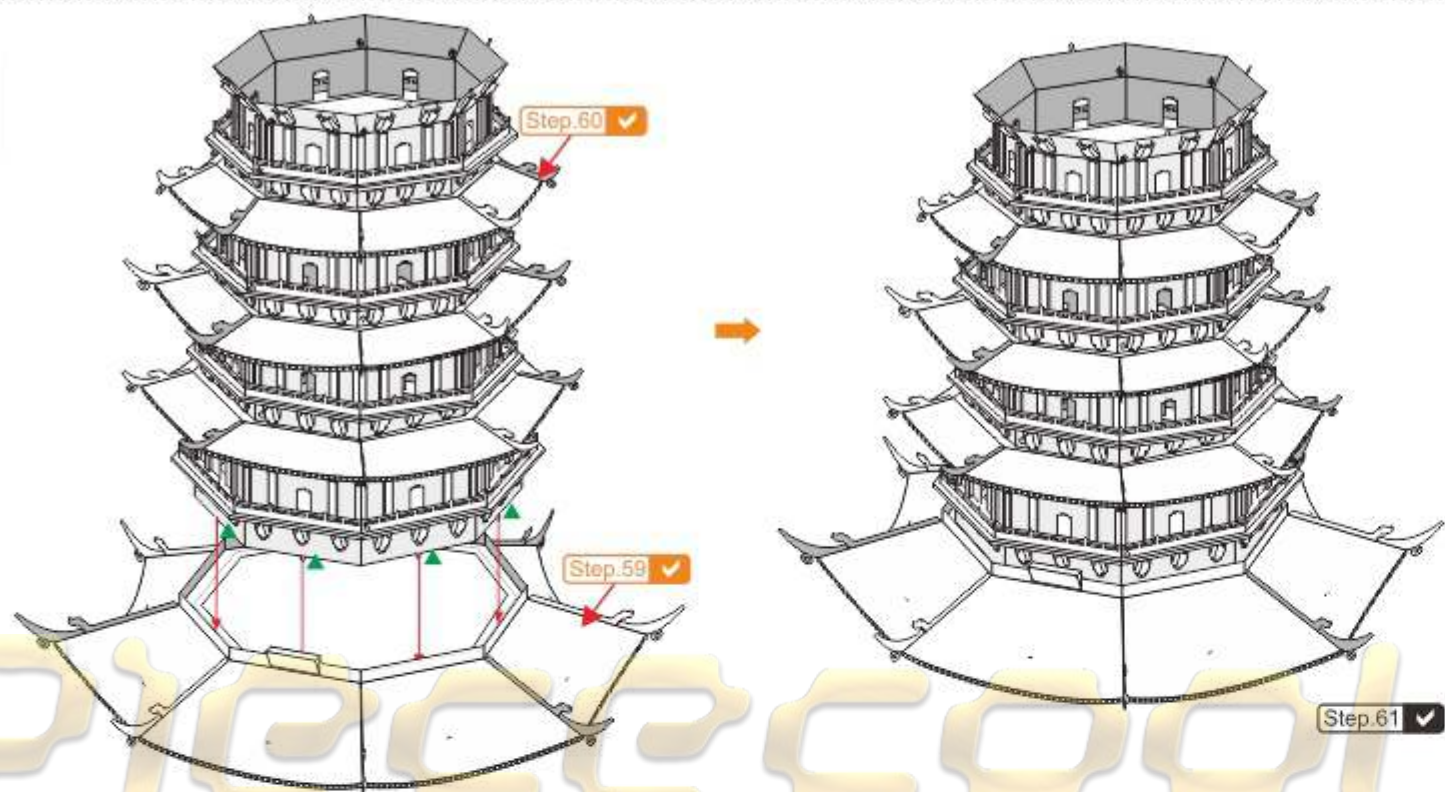


Step  
60

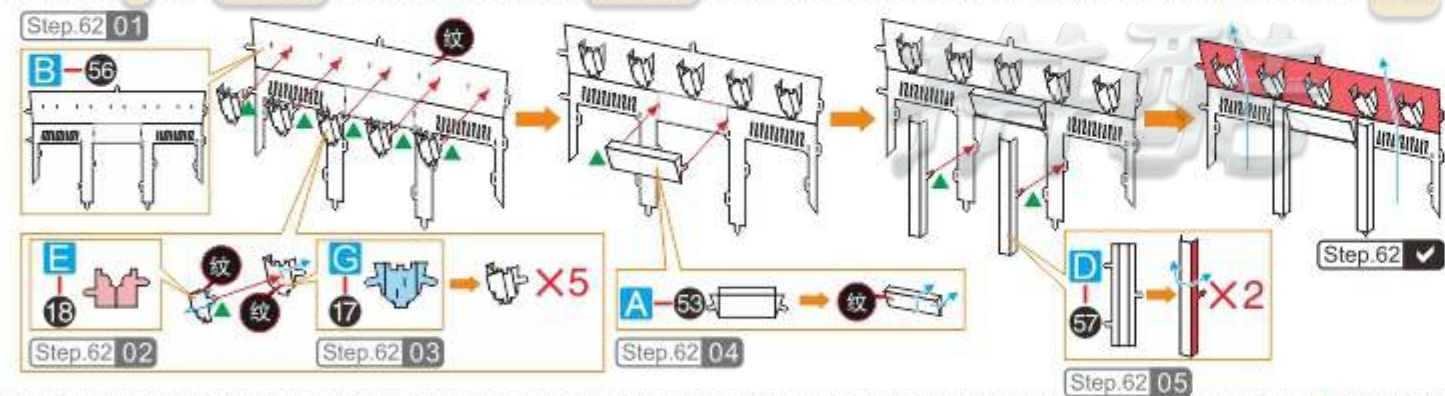




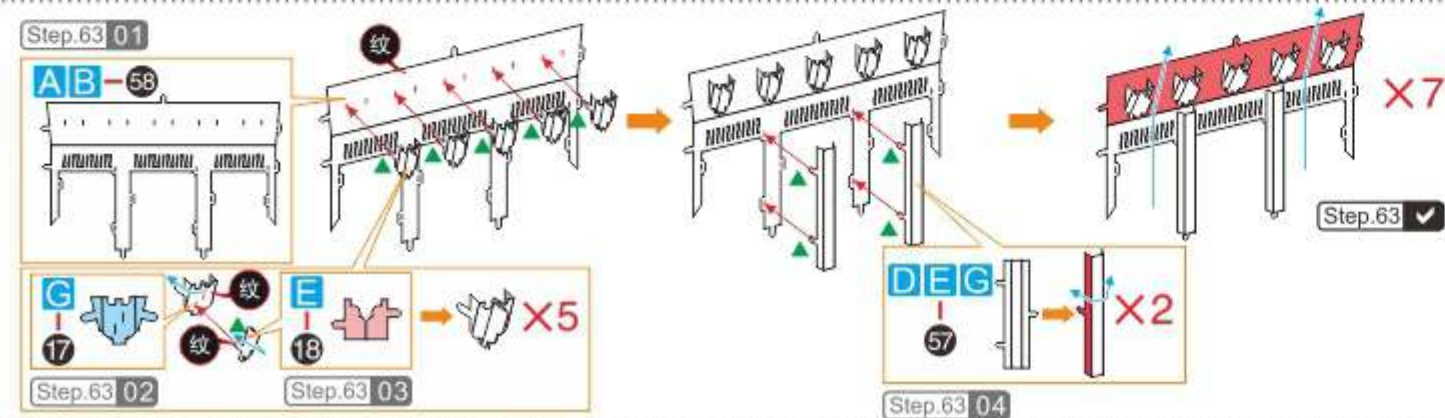
Step  
61



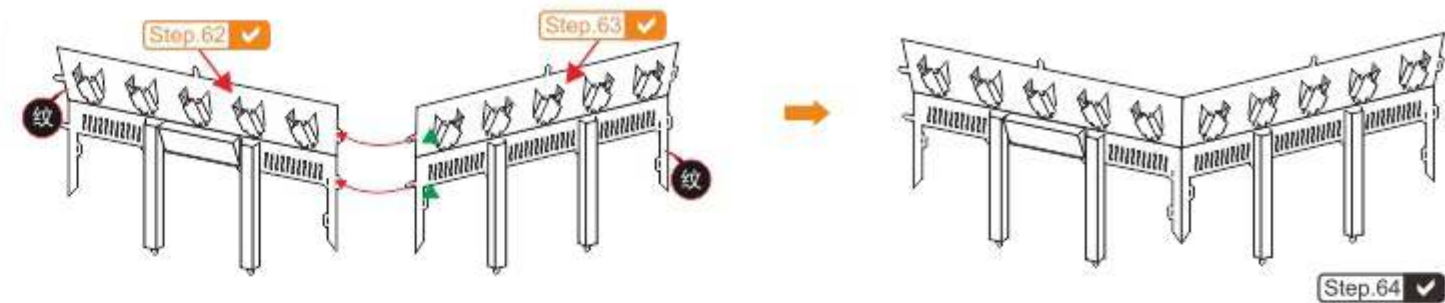
Step  
62



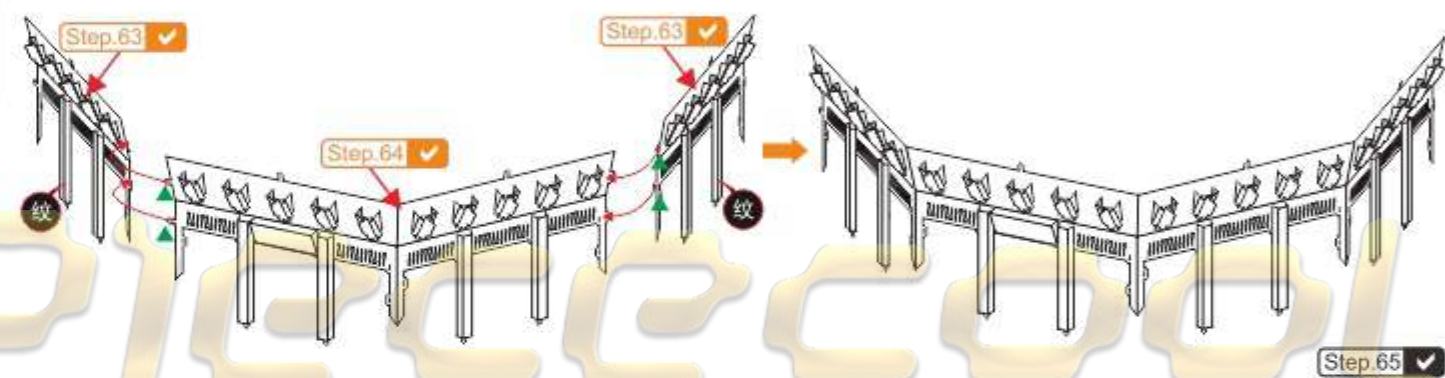
Step  
63



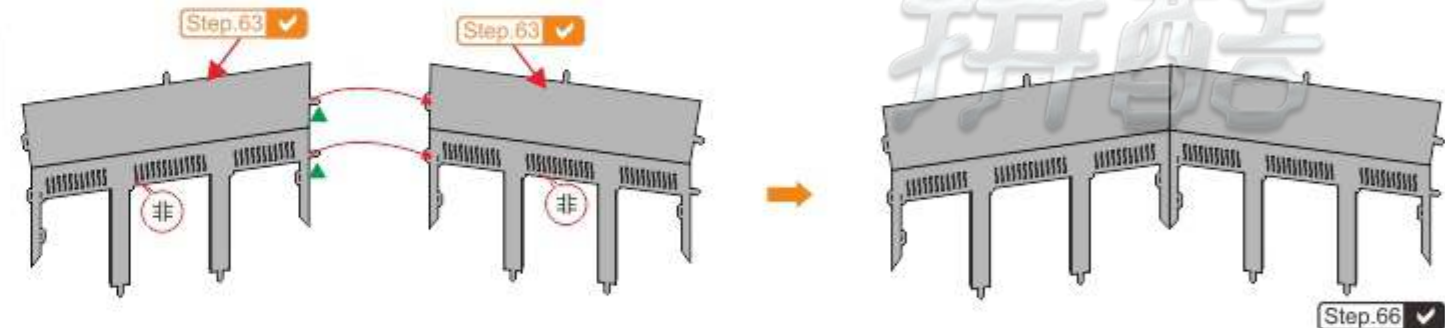
Step  
64



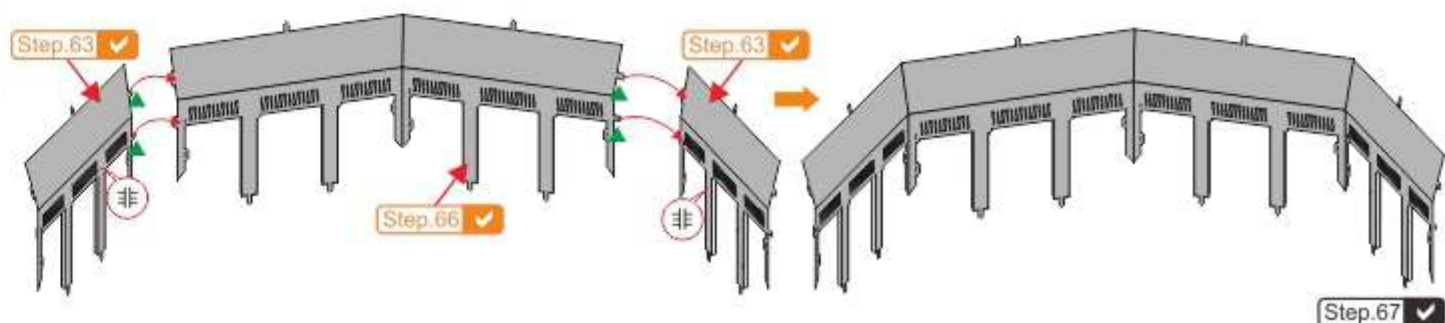
Step  
65



Step  
66

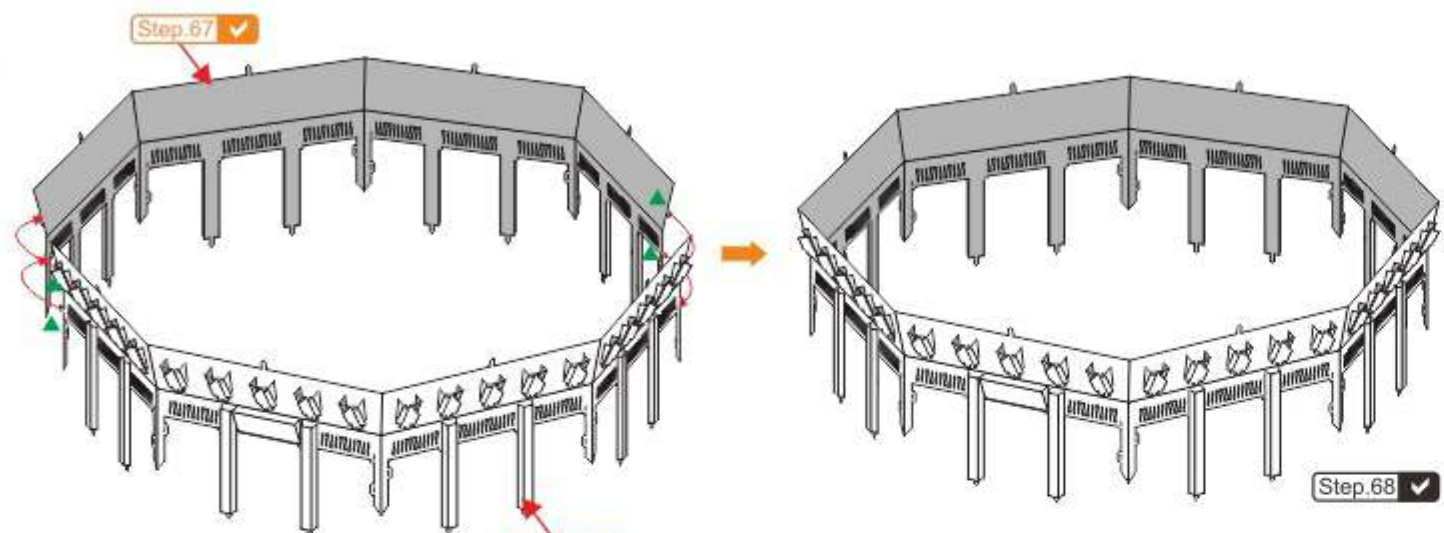


Step  
67

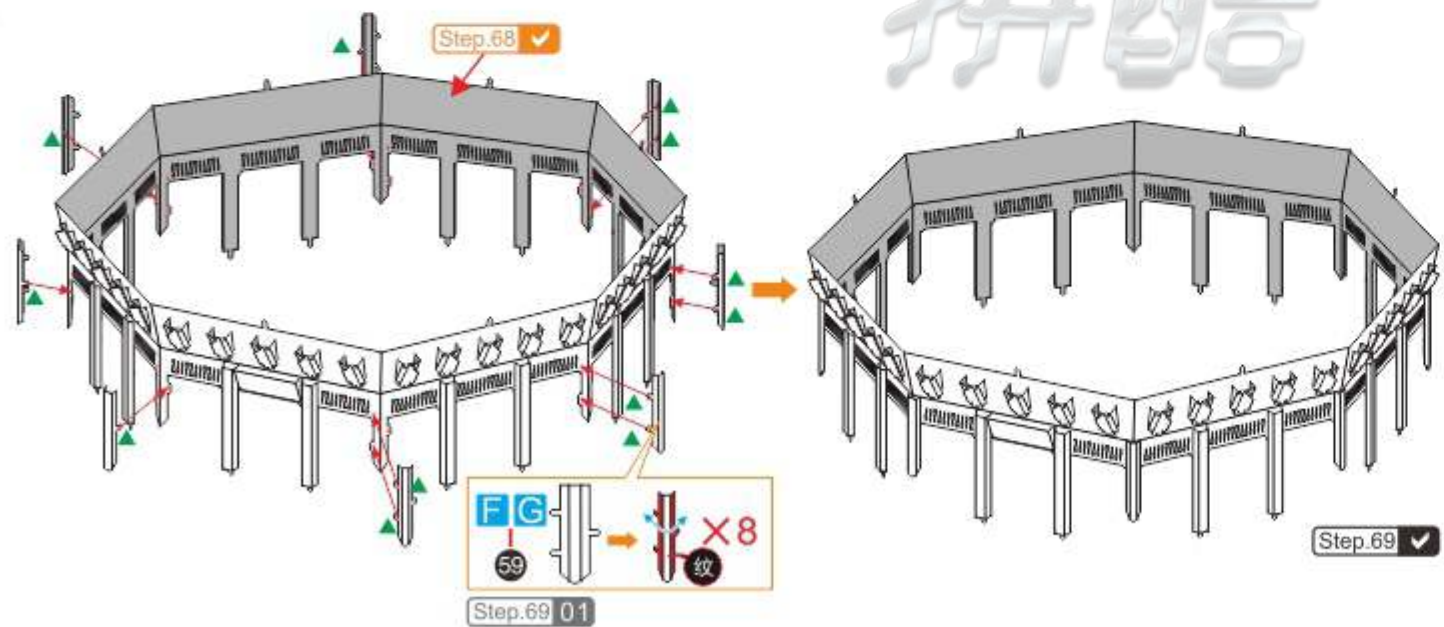




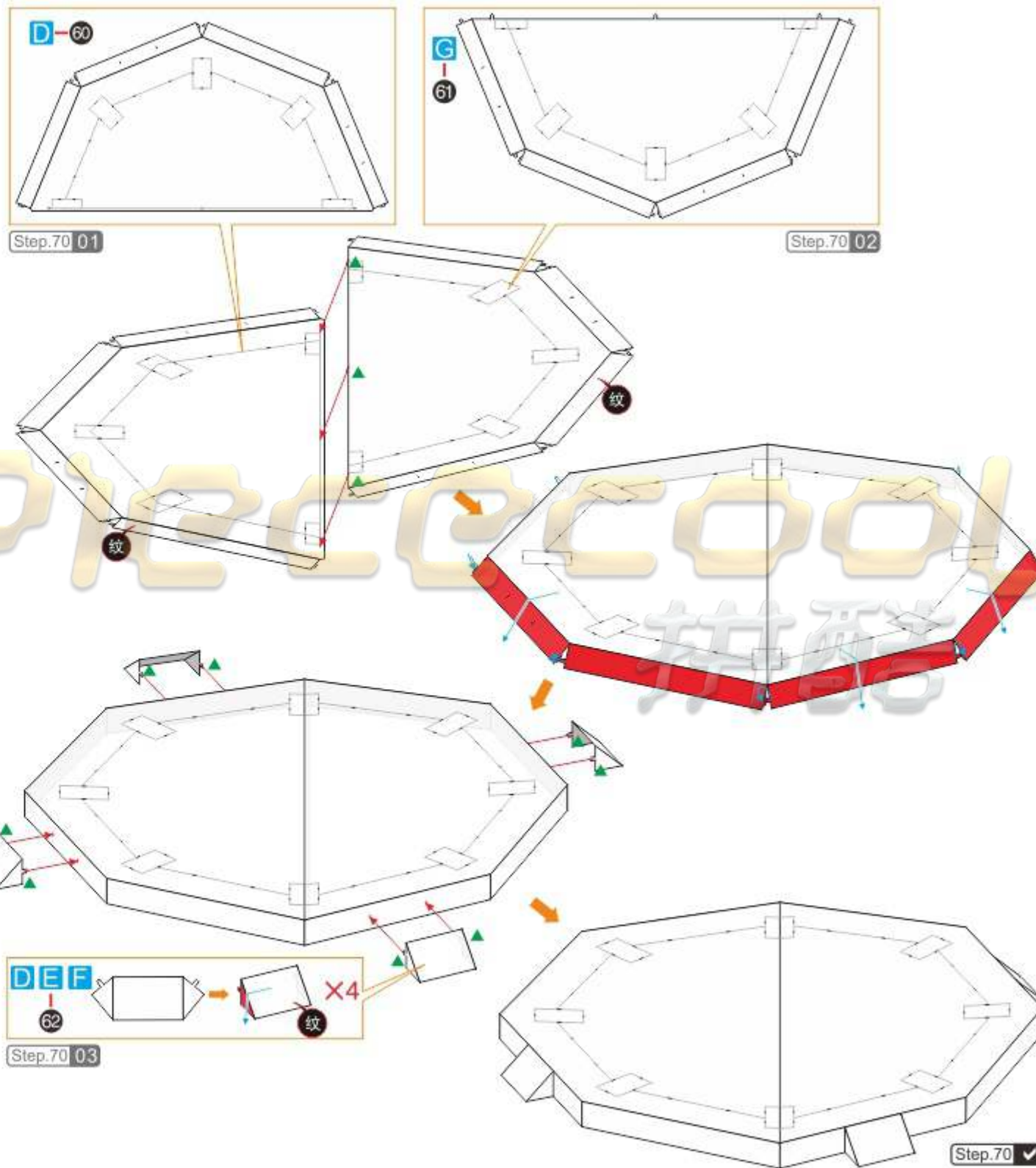
Step  
68



Step  
69



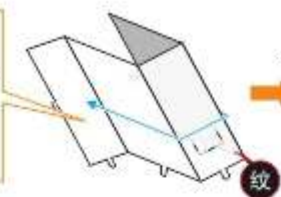
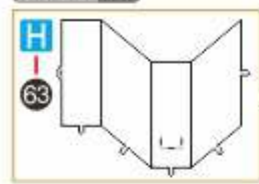
Step  
70



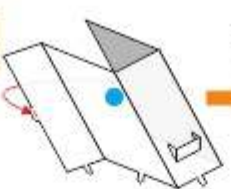


Step  
71

Step.71 01



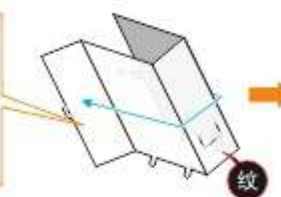
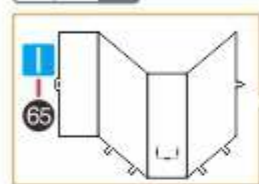
Step.71 02



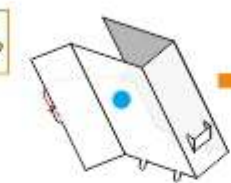
X6

Step  
72

Step.72 01

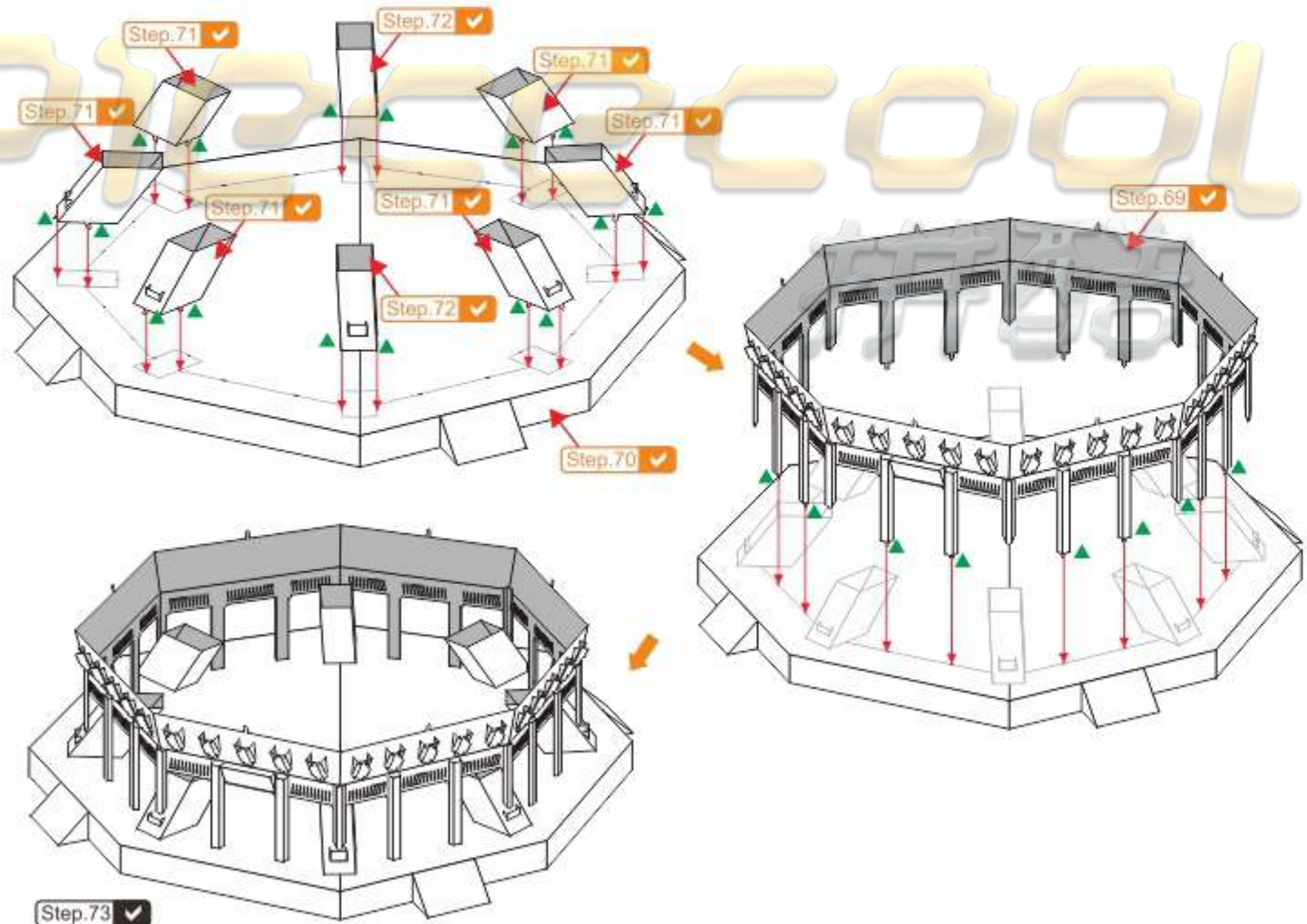


Step.72 02



X2

Step  
73



Step.73 ✓

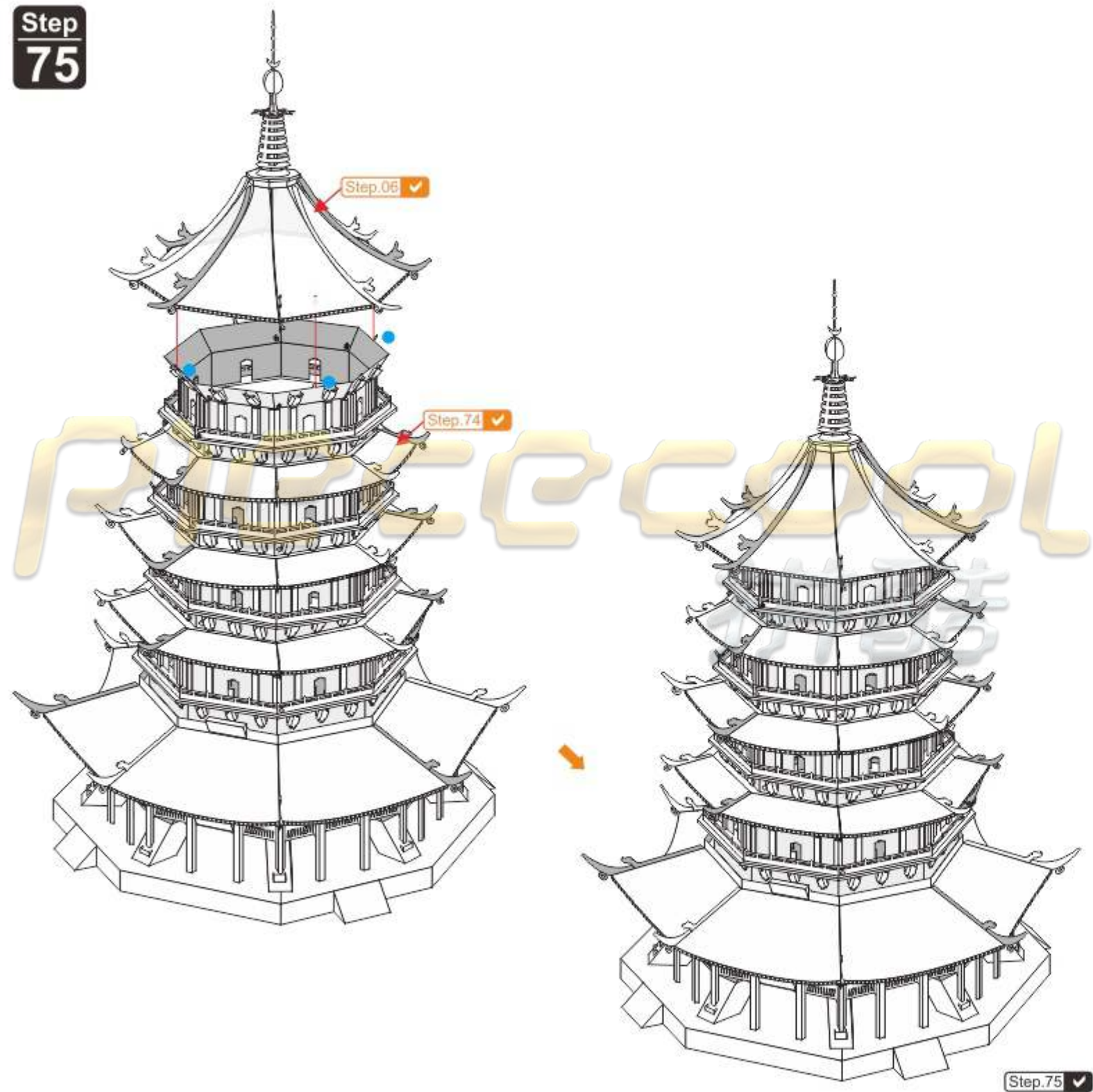
Step  
74



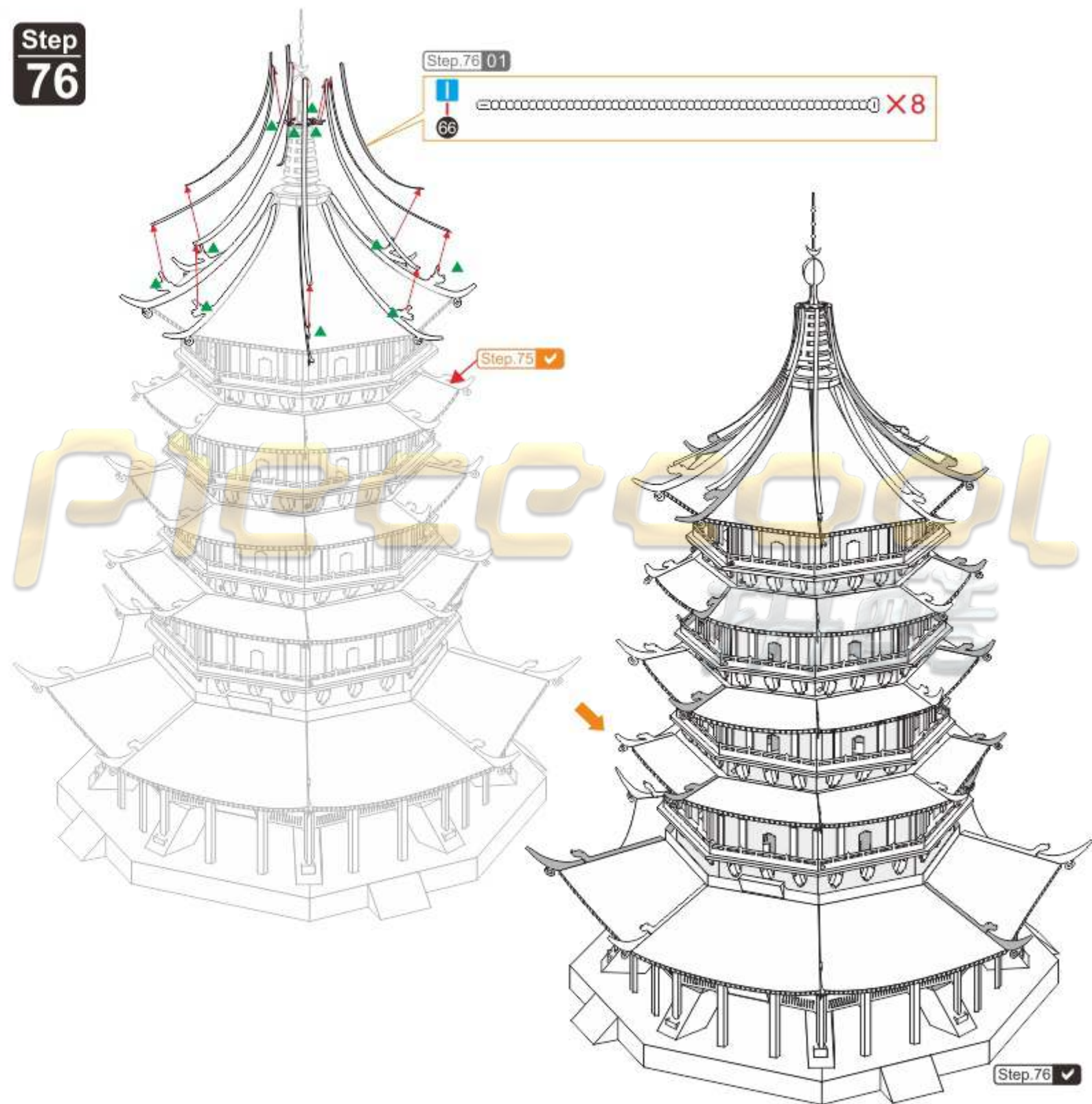
Step.74 ✓



Step  
75



Step  
76





Step  
77



Piececool  
更多产品信息, 请浏览[www.Piececool.com](http://www.Piececool.com)官方网站  
拼酷



东莞市微石塑胶金属科技有限公司 出品  
**WIST PLASTIC & METAL TECHNOLOGY LIMITED**  
地址：广东省东莞市寮步镇向西工业区村口街2号 邮编：523408  
电子邮箱：kf@wist-group.com  
服务热线：0769-8119 2243

© Wist Plastic & Metal Technology Limited. All rights reserved.

P100.SMS.20180228.A1