

赵子龙 常胜将军
ZHAO ZI LONG
Q005



Q005.SMS.20180621.A1

拼前需知

⚠️ 请小心处理金属边料，以防划伤

● 准备工具：



建议使用拼酷正品拼装工具（水口钳、尖嘴钳），拼装时更省心、省力，拼装后作品更精细、美观！

● 拼装方法：

a. 取下零件



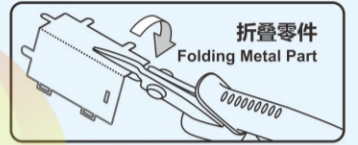
使用水口钳剪断金属零件上的水口，将需要的金属零件从金属片板件取下。

b. 识别零件



识别金属零件上的扣点、折叠线、扣孔的样子。

c. 折叠零件

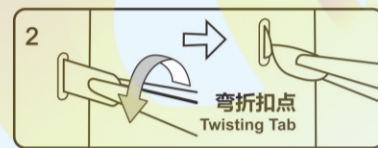


使用尖嘴钳，参照拼装说明书将金属零件折成形状。

d. 固定零件



● 插入扣孔，平折 90°



▲ 插入扣孔，旋转 90°

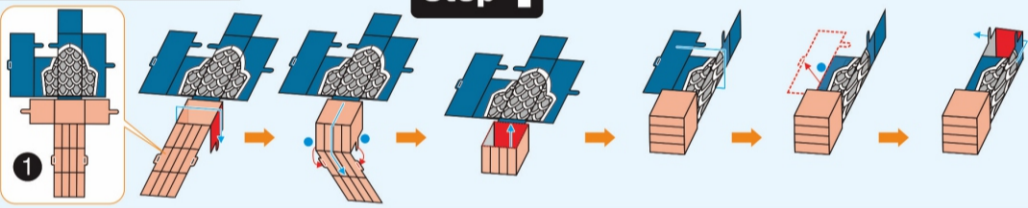
● 注意事项：



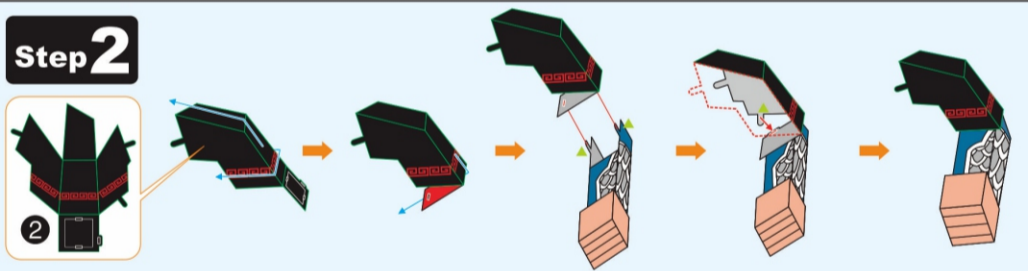
剪金属零件时请剪零件“水口位”，请勿将“扣点”当成“水口位”剪下，每次剪零件时请仅剪当前步骤的零件，切勿一次性将所有零件全部剪下，避免丢失；当遇到折叠线的零件，请注意金属片的正反面及拼折方向，请按照说明书说明的方向，轻剪慢折，最好一次折叠完成，请勿反复折叠，避免零件损坏。

拼装步骤

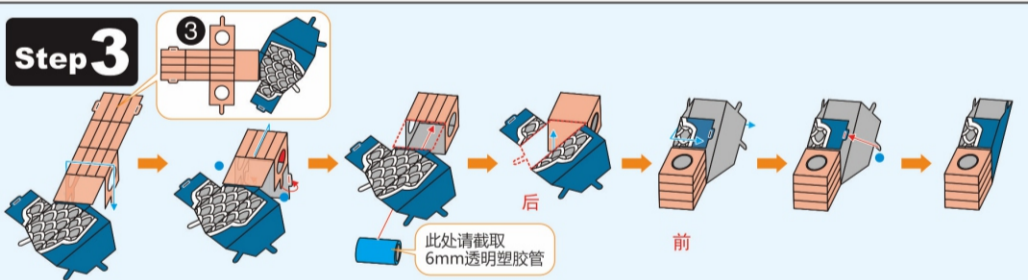
Step 1



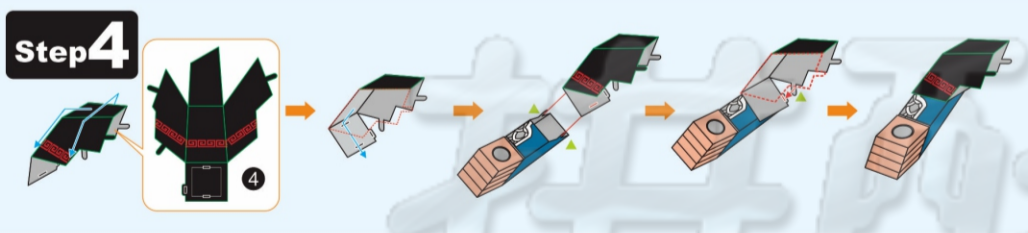
Step 2



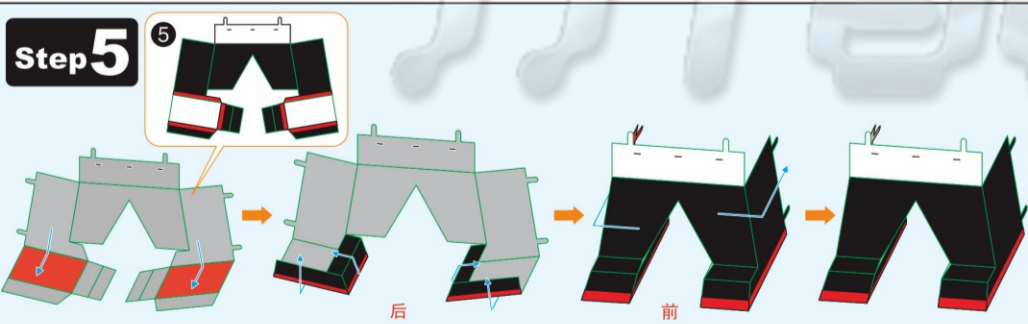
Step 3



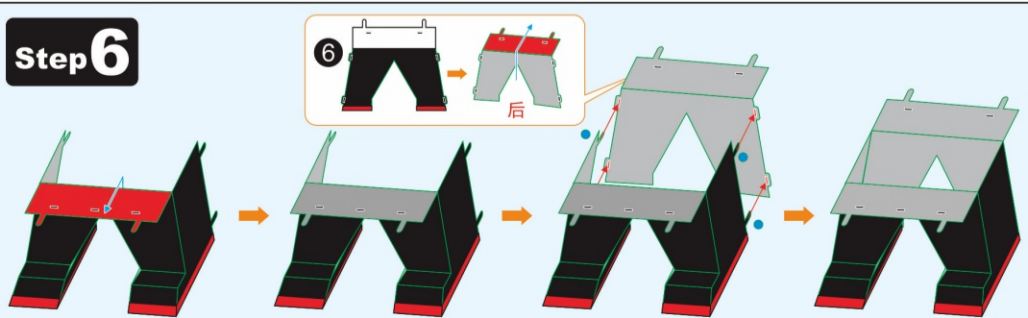
Step 4



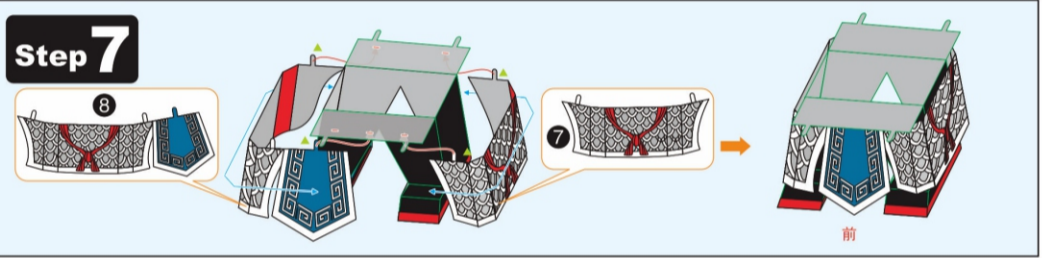
Step 5



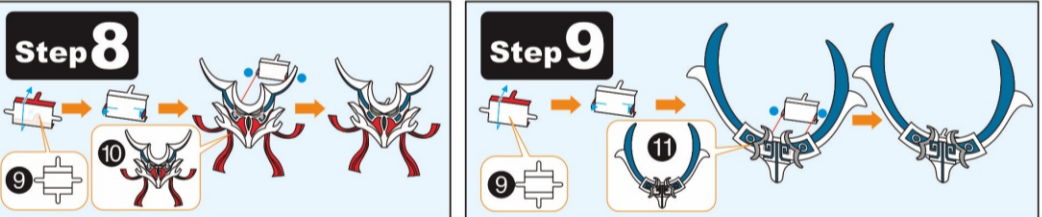
Step 6



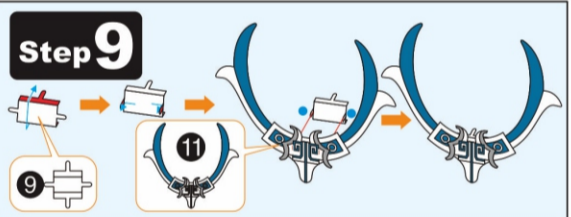
Step 7



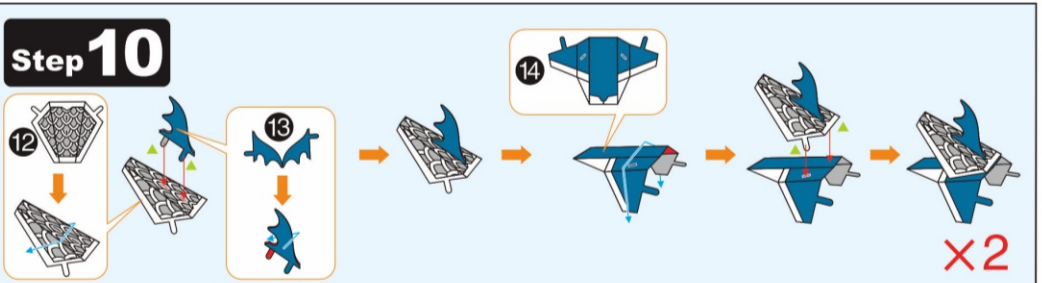
Step 8



Step 9



Step 10



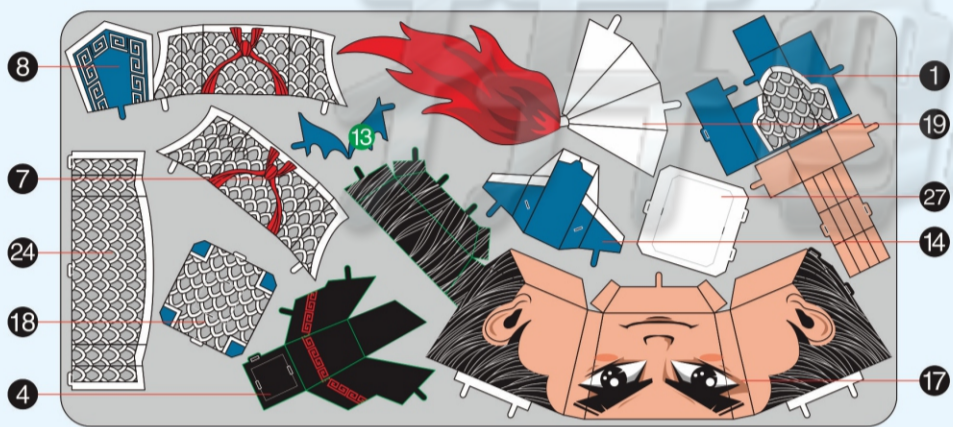
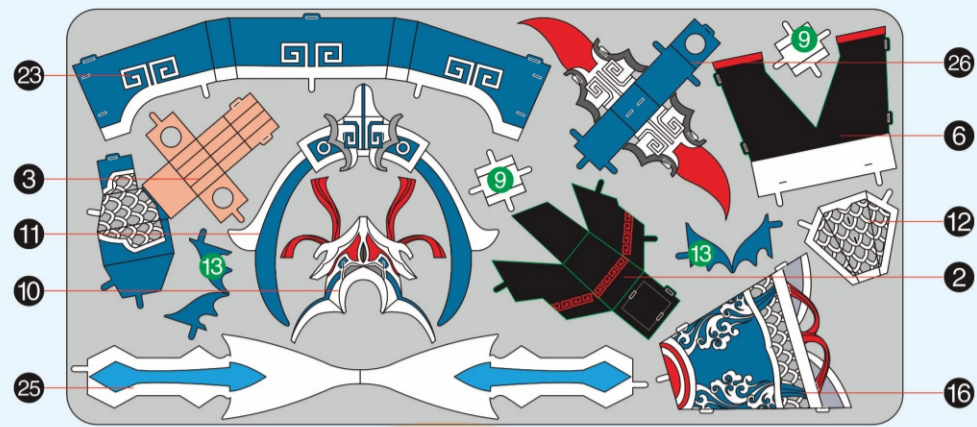
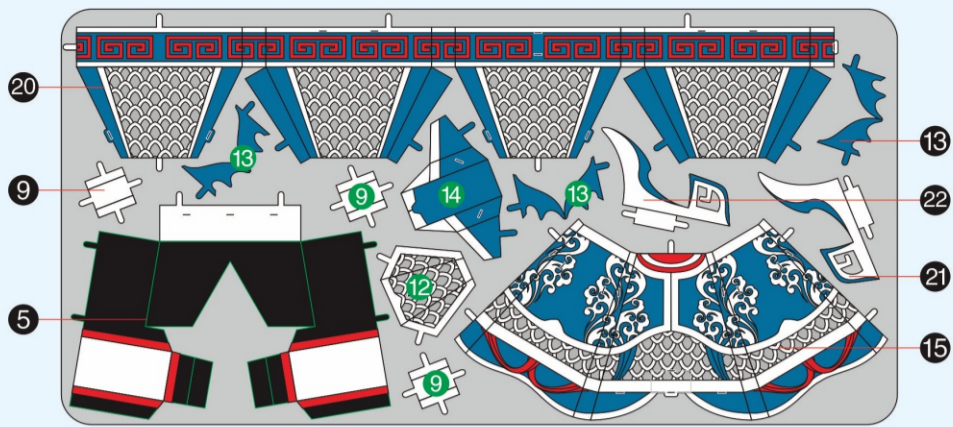
Step 11



Step 12



金属板件



配件包

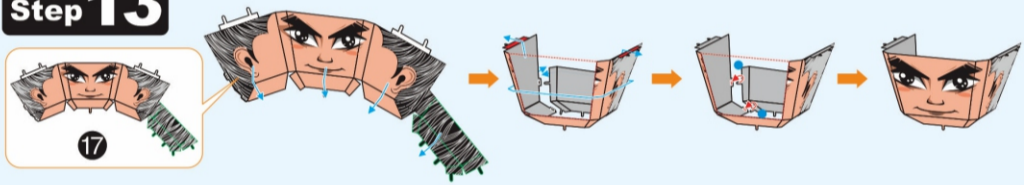
透明塑胶管

长度16mm (使用长度请根据拼装步骤中的提示截取)

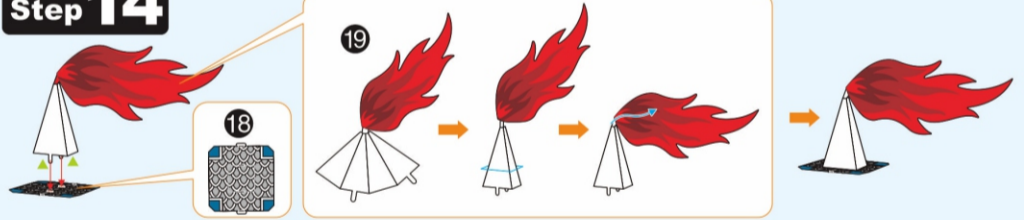
金属管

长度50mm

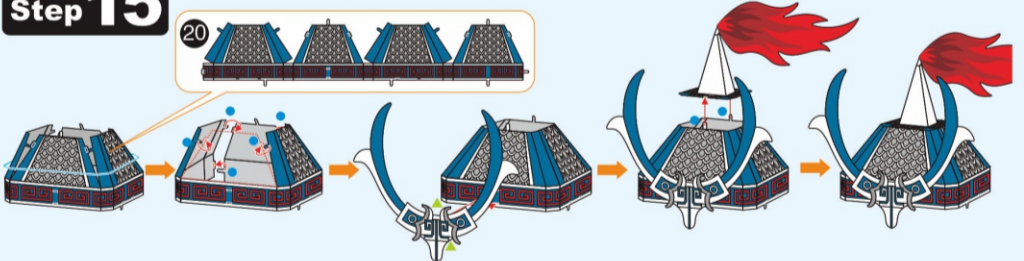
Step 13



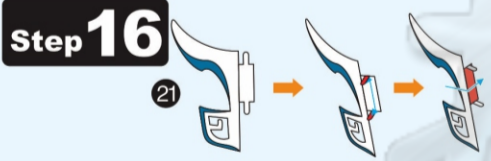
Step 14



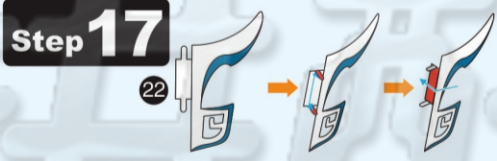
Step 15



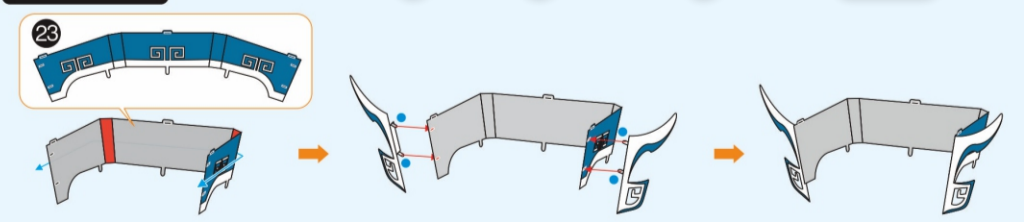
Step 16



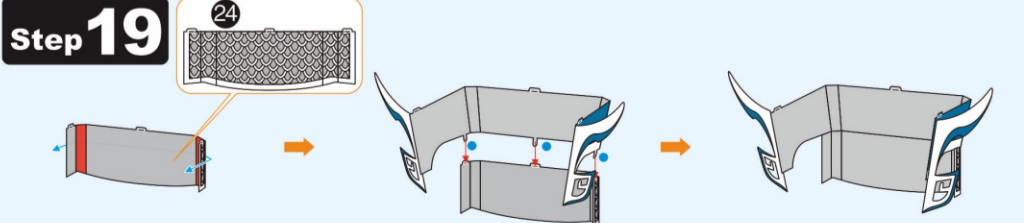
Step 17



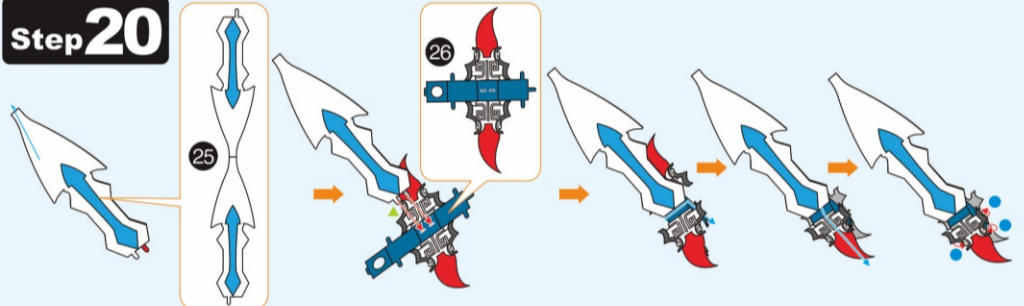
Step 18



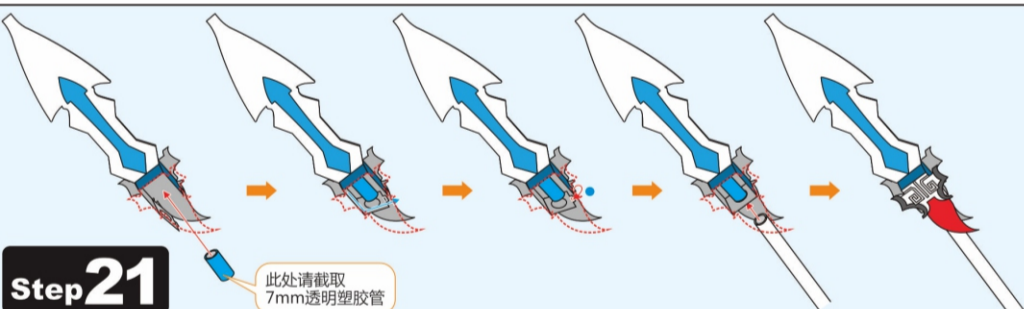
Step 19



Step 20



Step 21



Step 22



Step 23

