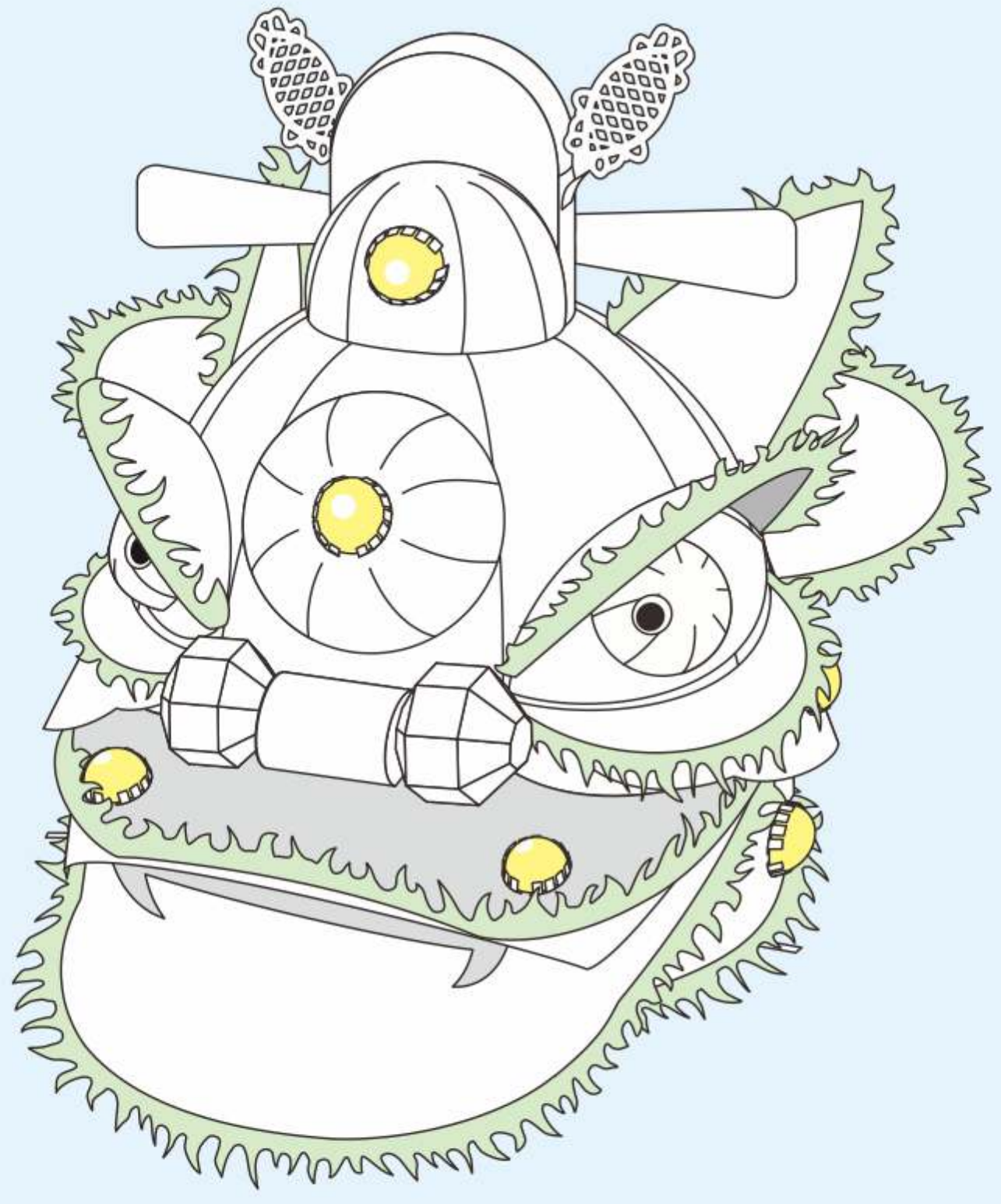


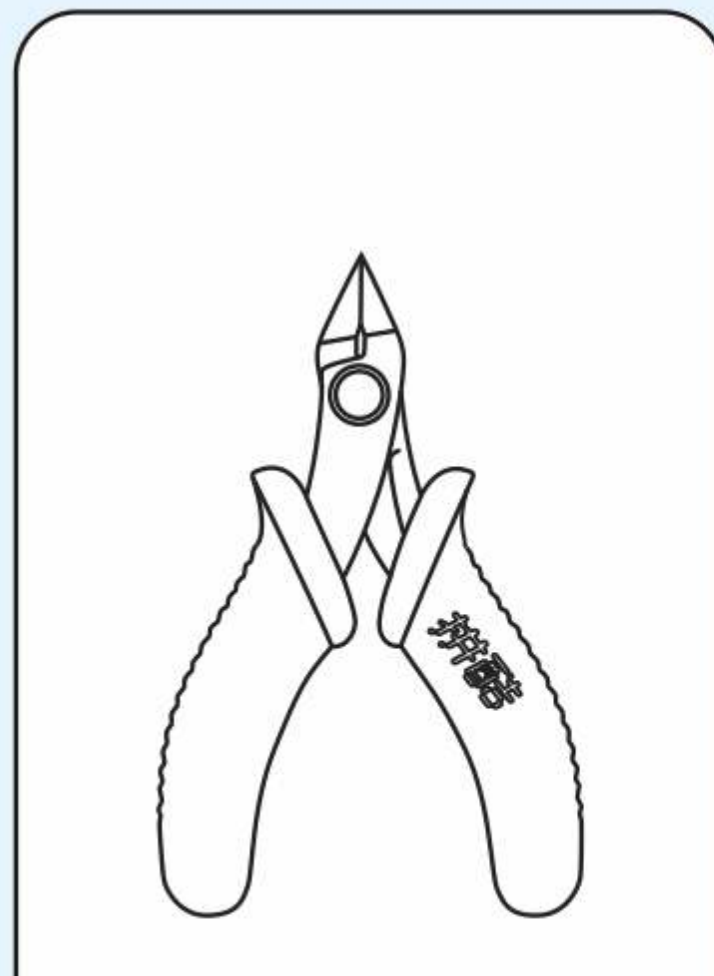
寿 SHOU P189



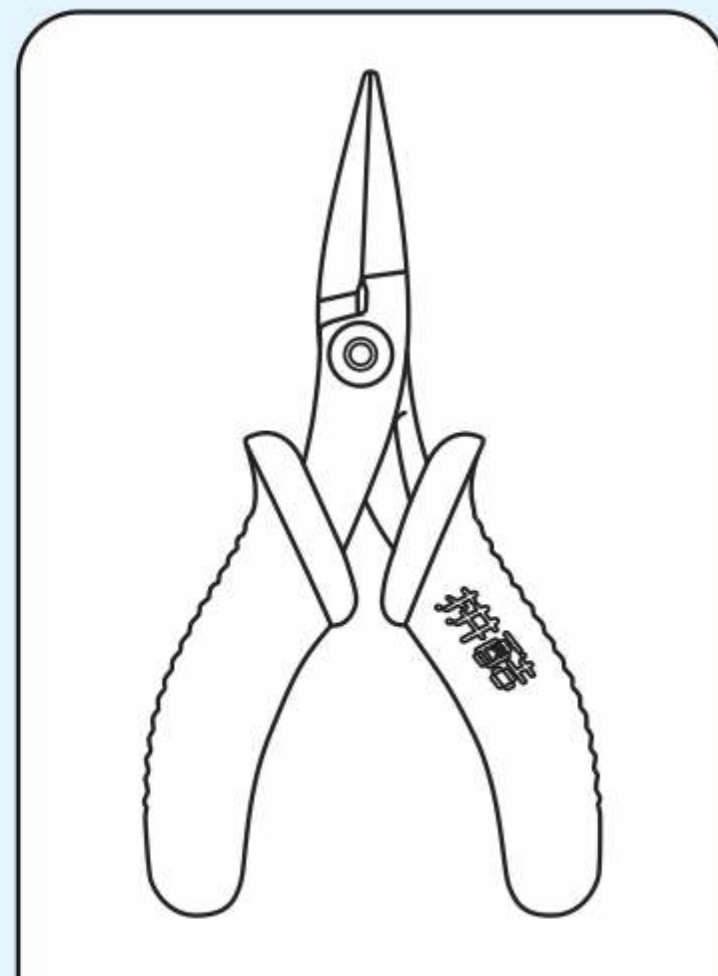
CP-ASSY-P189#-A1-20210628
电子版下载地址: <http://www.piececool.com/cpsuoming/P189.pdf>

拼装前需知

• 准备工具:



水口钳工具
修剪金属片板上的零件水口。



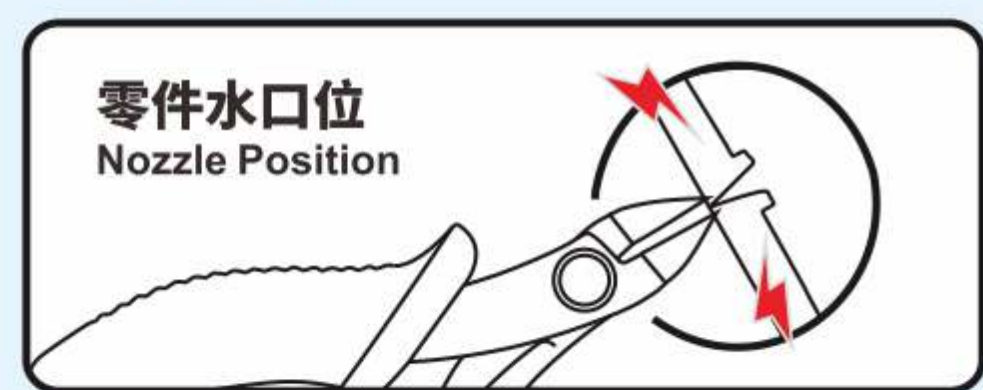
尖嘴钳工具
弯折金属零件上的折叠线和扣点。

建议使用拼酷正品拼装工具(水口钳、尖嘴钳),拼装时更省心、省力,拼装后作品更精细、美观!

⚠️ 组装时请小心处理金属零件,以防划伤

• 拼装方法:

a. 取下零件:



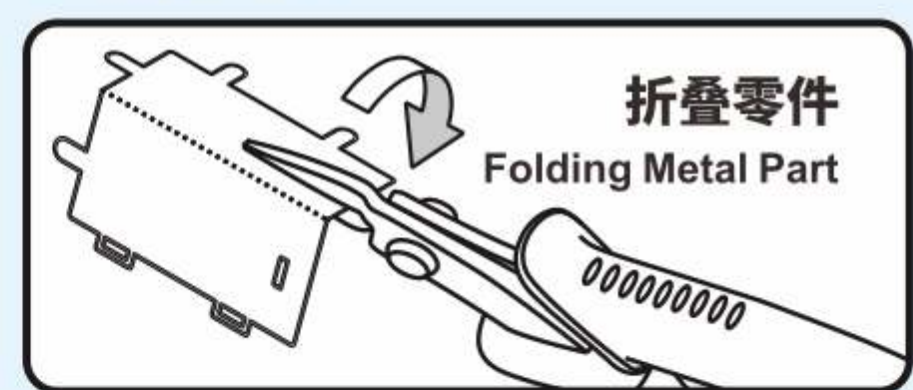
使用水口钳剪断金属零件上的水口,将需要的金属零件从金属片板取下

b. 识别零件:



识别金属零件上的扣点,折叠线,扣孔的样子

c. 折叠零件:



使用尖嘴钳,参照拼装说明书将金属零件折成形状

d. 固定零件:



● 插入扣孔,平折90°



▲ 插入扣孔,旋转90°

• 注意事项:

- 纹 颜色面 纹理面
- 非 非颜色面 非纹理面
- 注意细节
- 注意片对称

剪金属零件时请剪零件“水口位”,请勿将“扣点”当成“水口位”剪下,每次剪零件时请仅剪当前步骤的零件,切勿一次性将所有零件全部剪下,避免丢失;
当遇到折叠线的零件,请注意金属片的正反面及拼折方向,请按照说明书的方向,轻剪慢折,最好一次性折叠完成,请勿反复折叠,避免零件损坏。

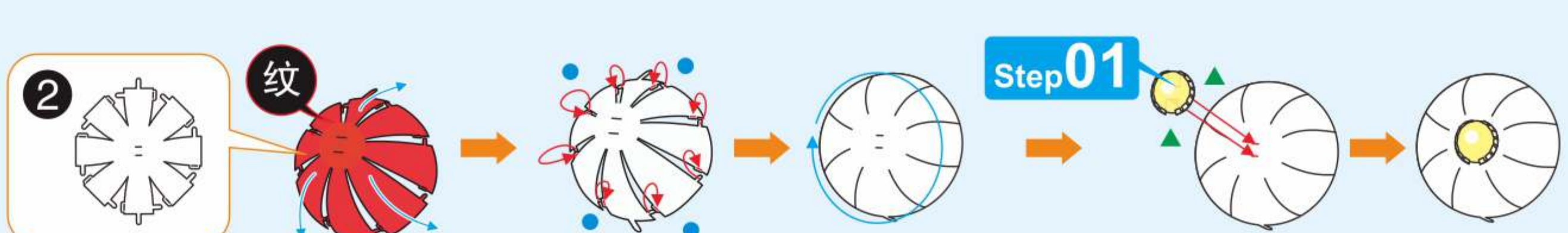
© Dongguan Weishi Culture Technology Co., Ltd. All rights reserved.

拼装步骤

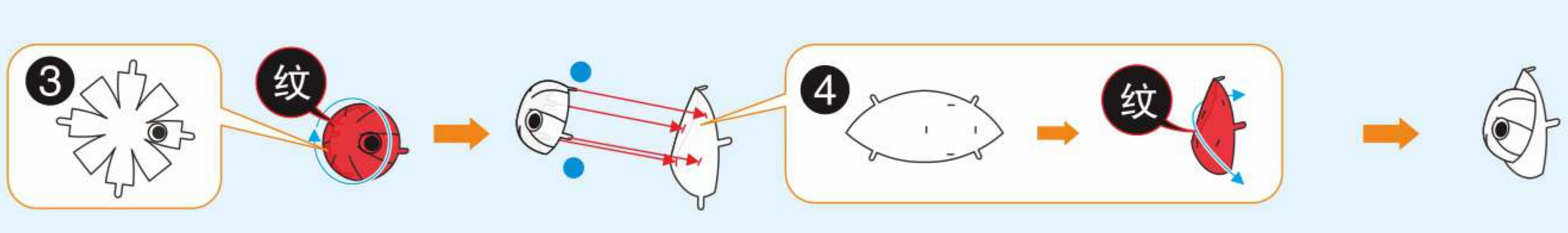
Step01



Step02



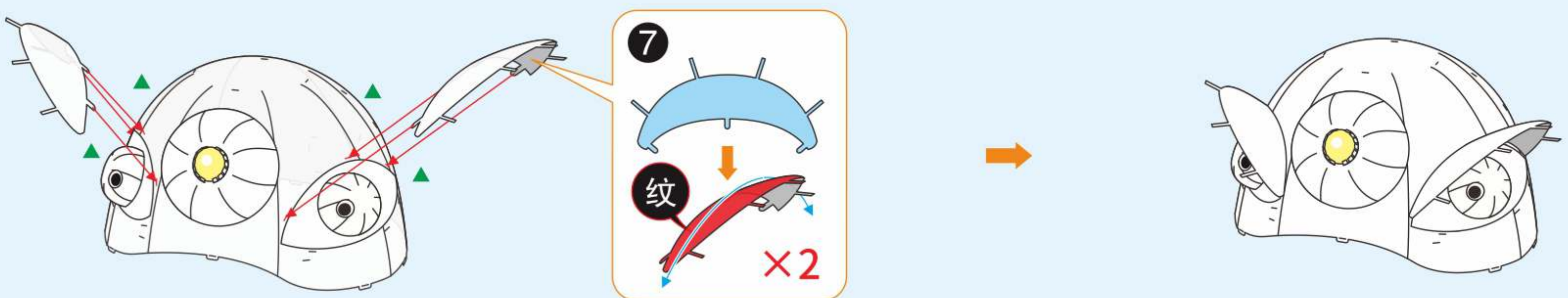
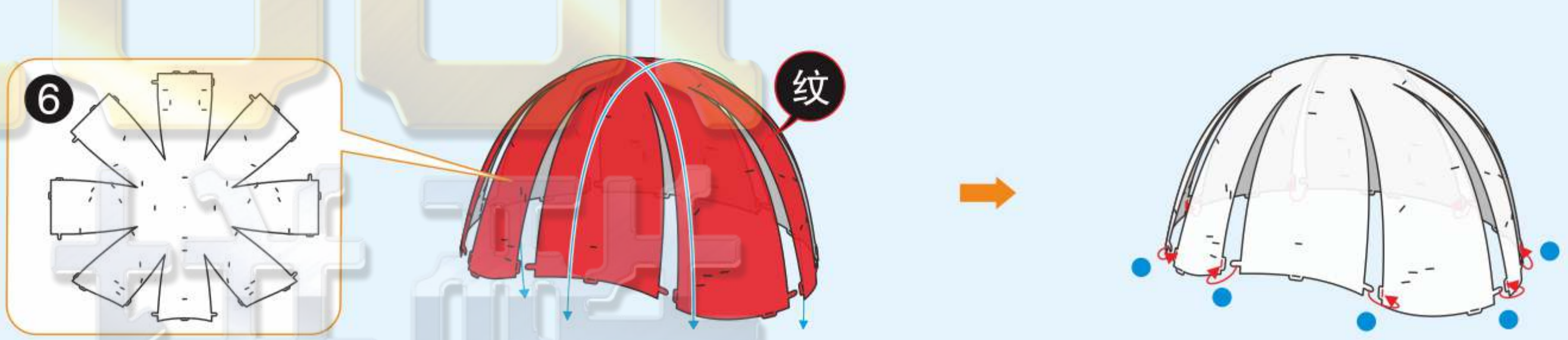
Step03



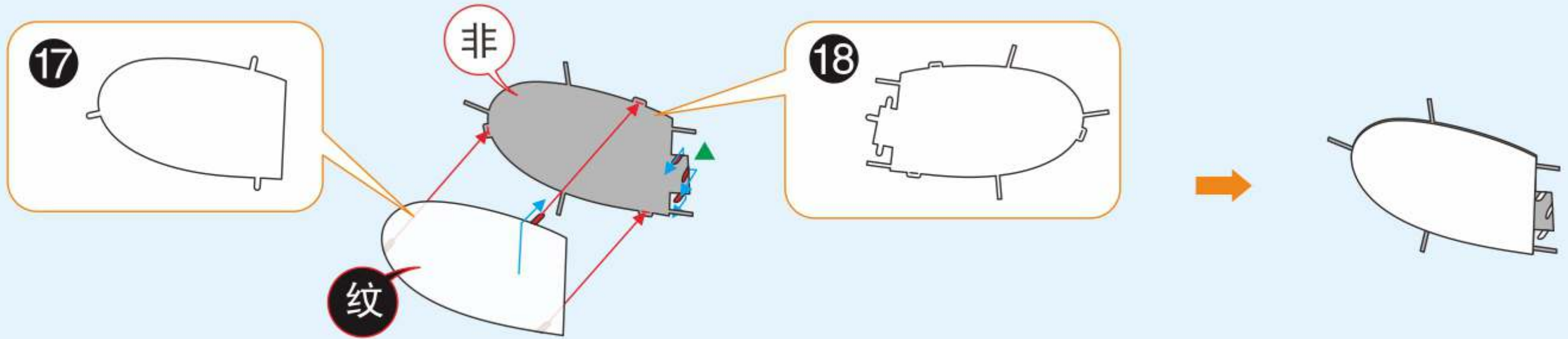
Step04



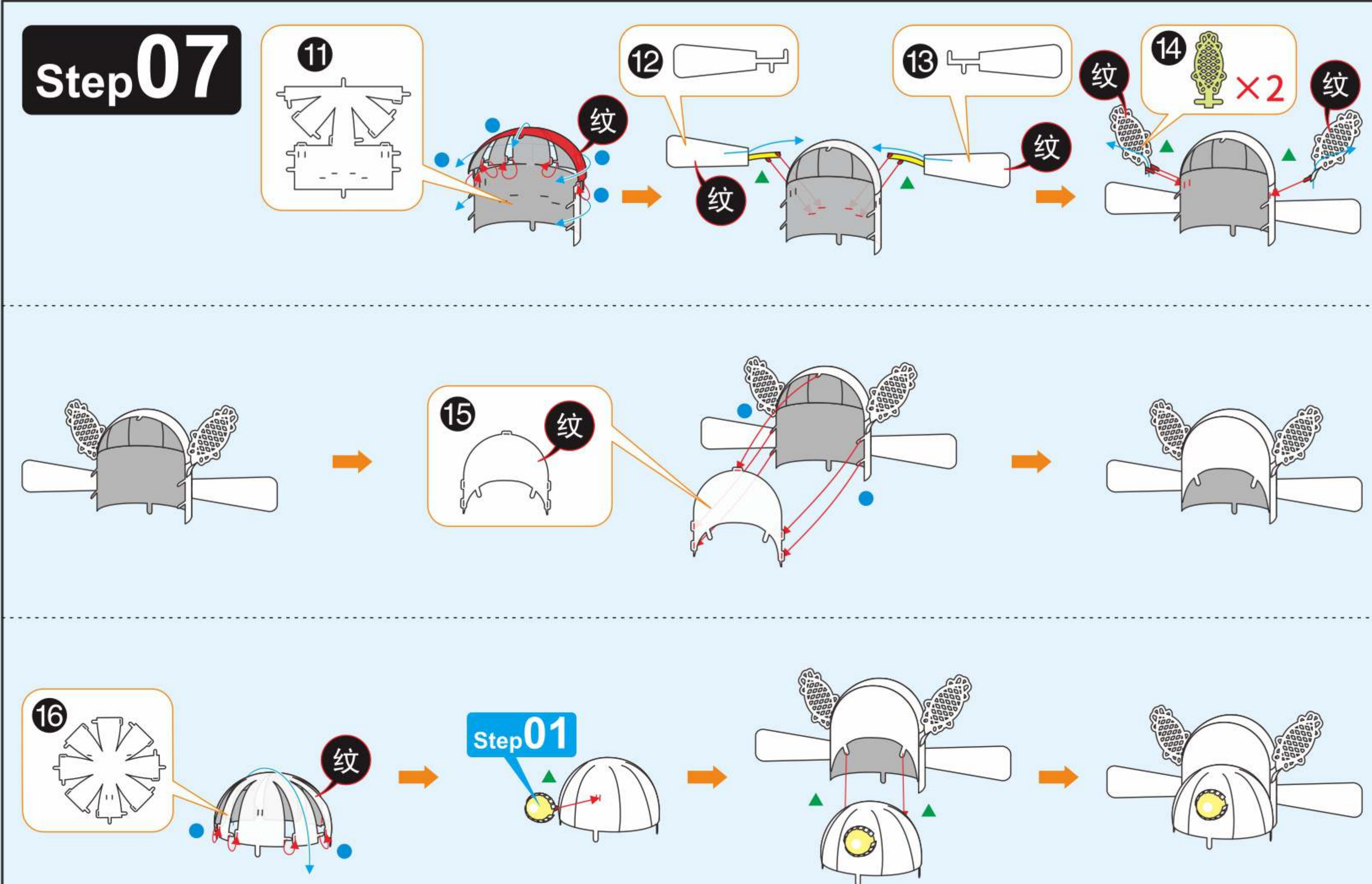
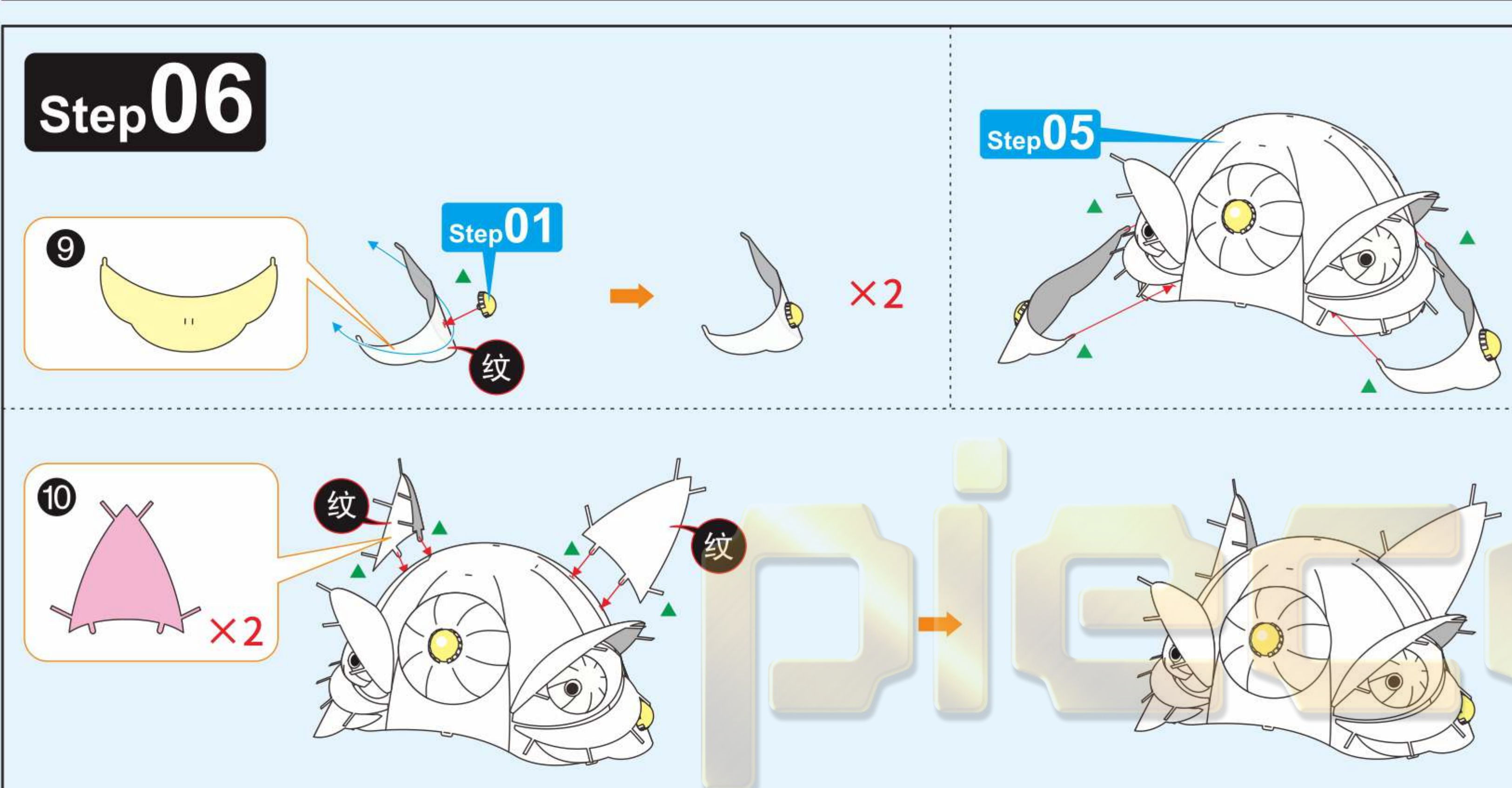
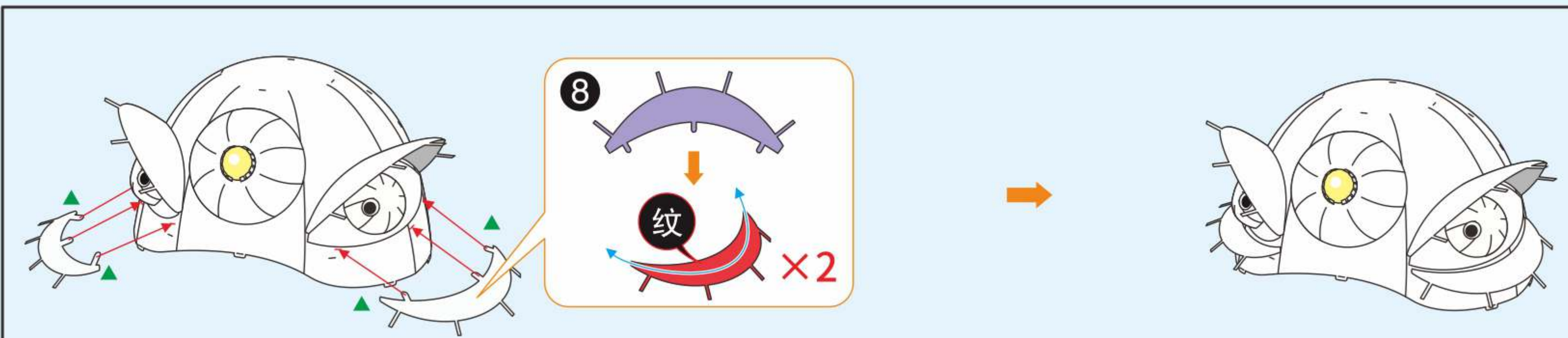
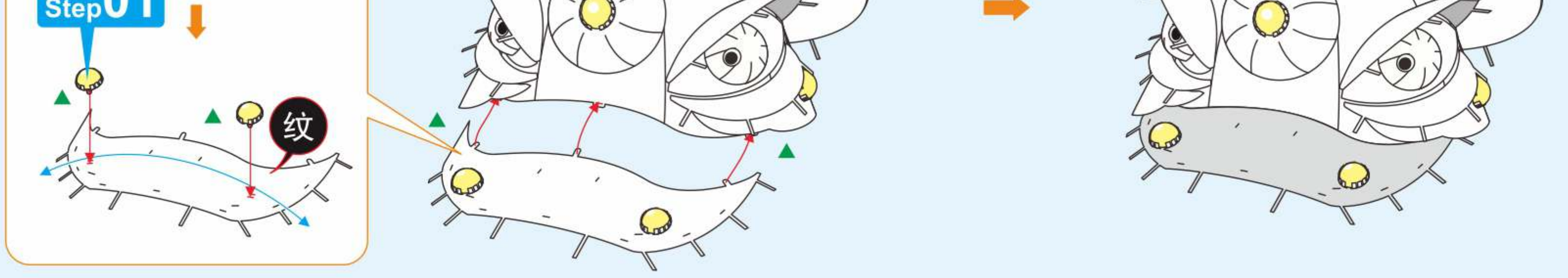
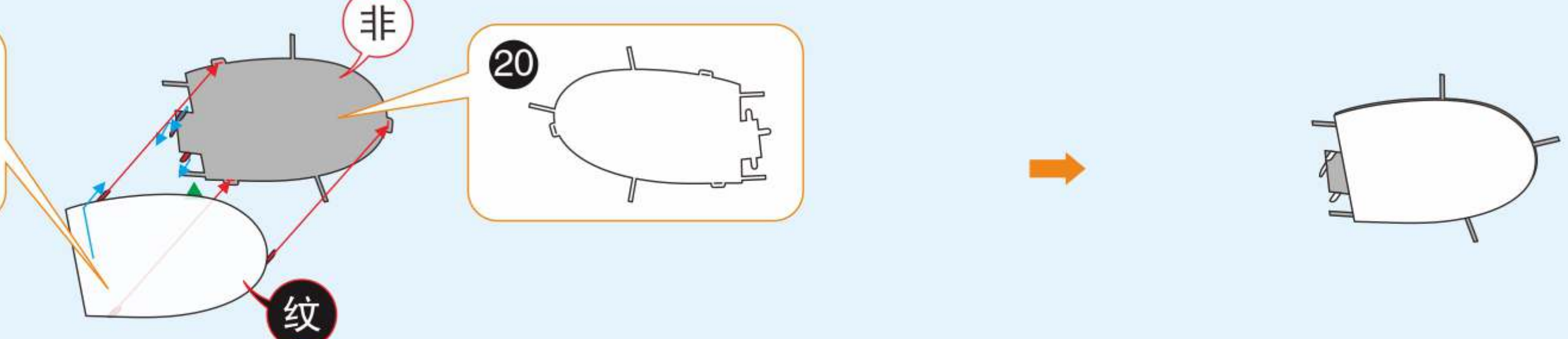
Step05



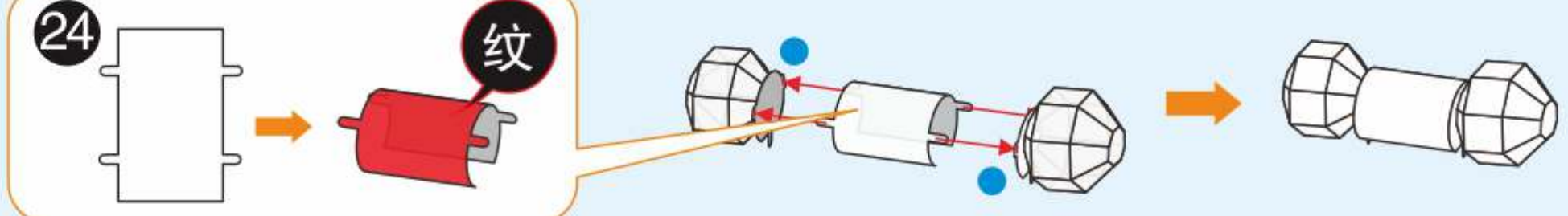
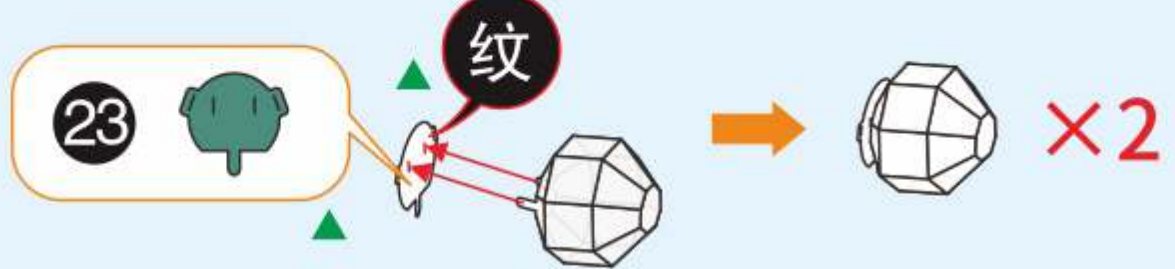
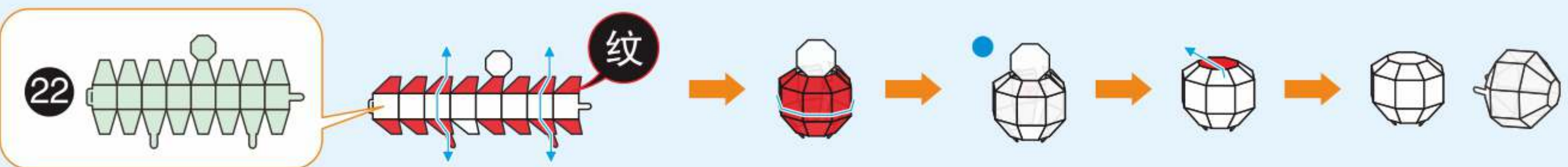
Step08



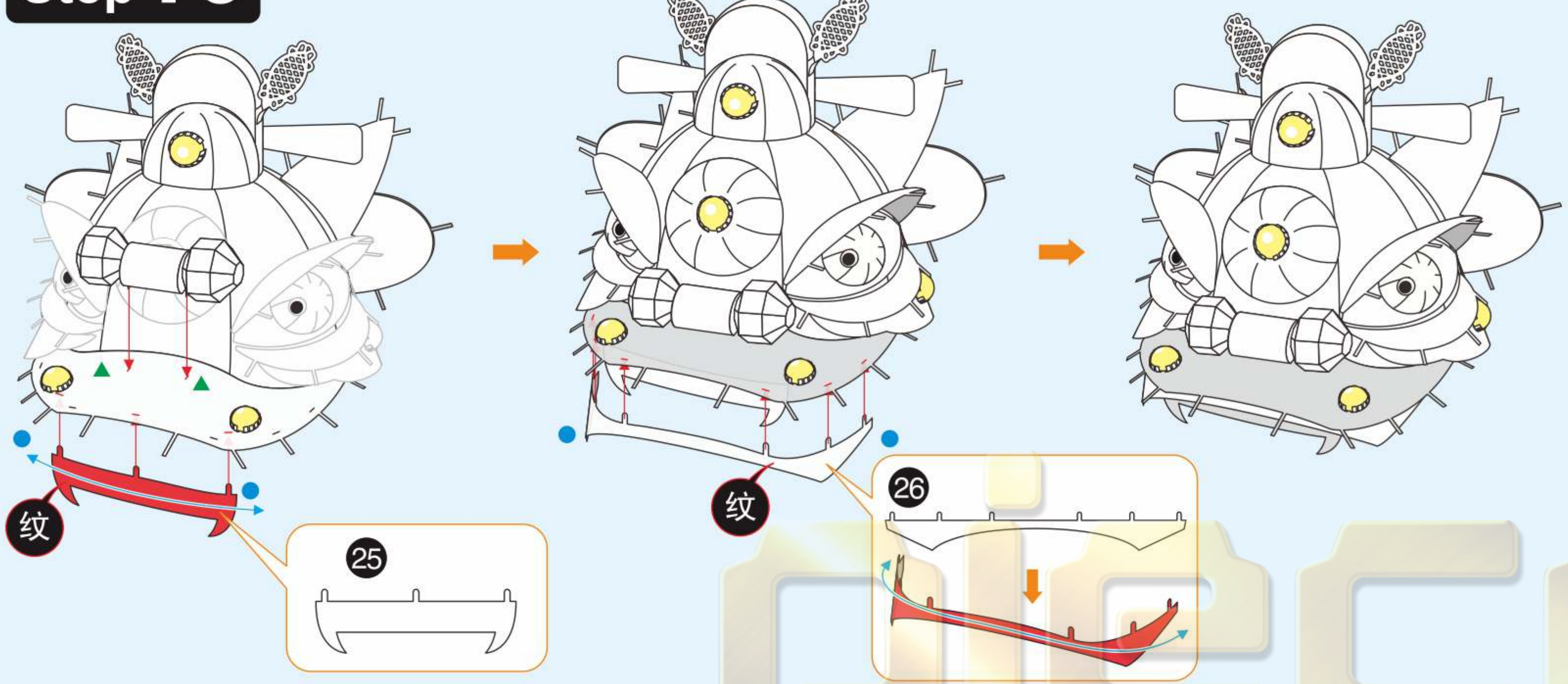
Step06



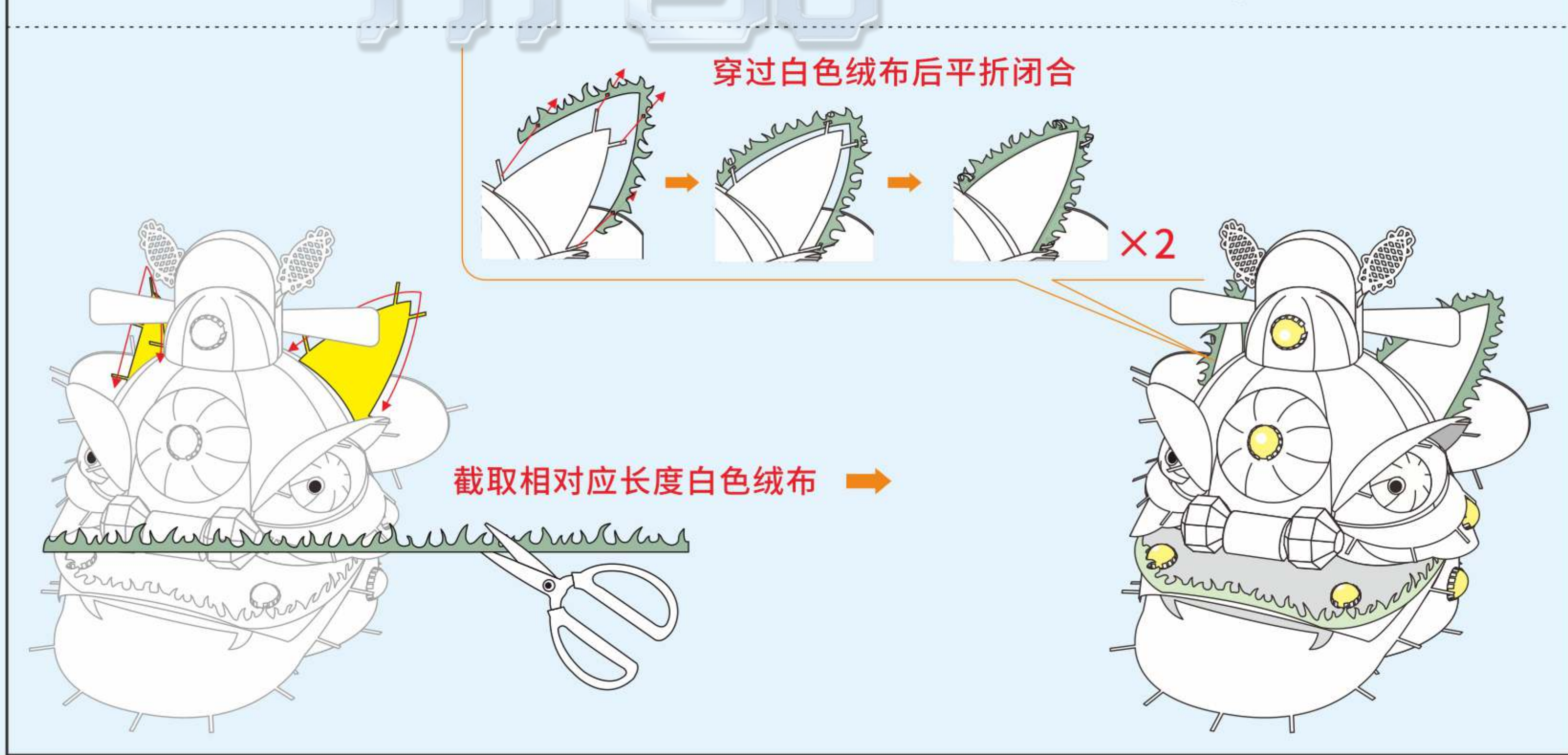
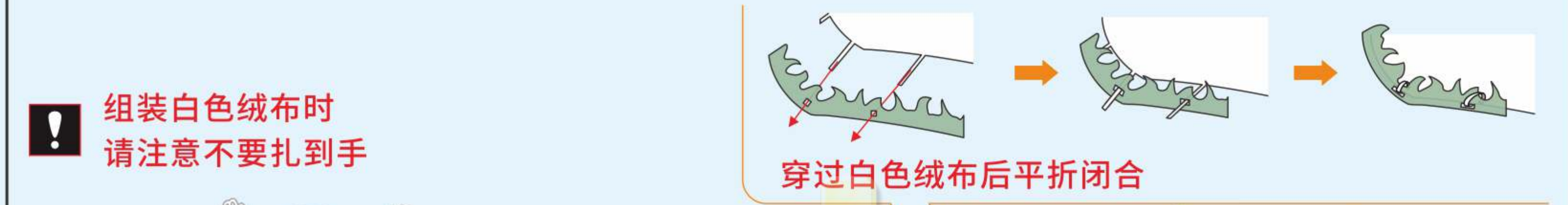
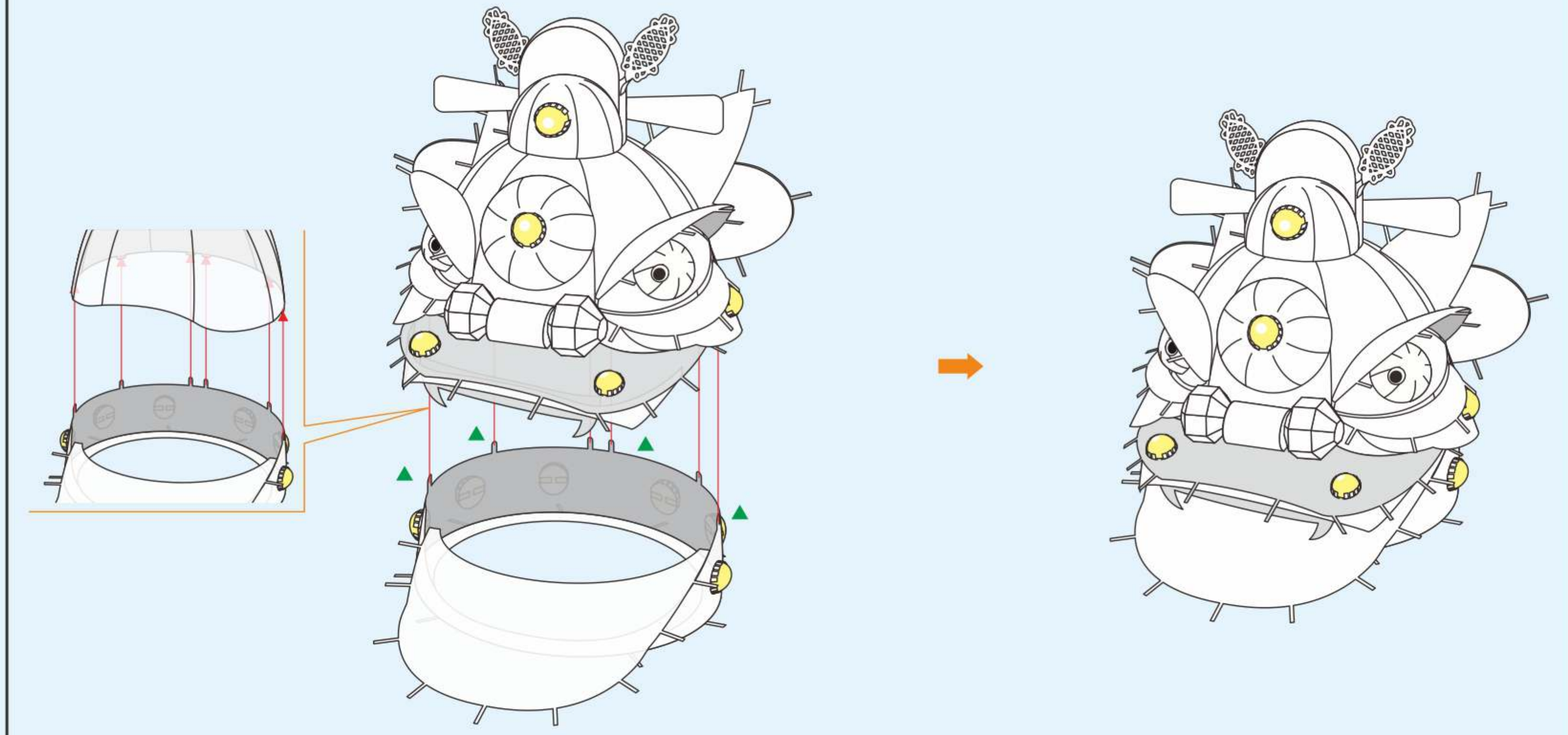
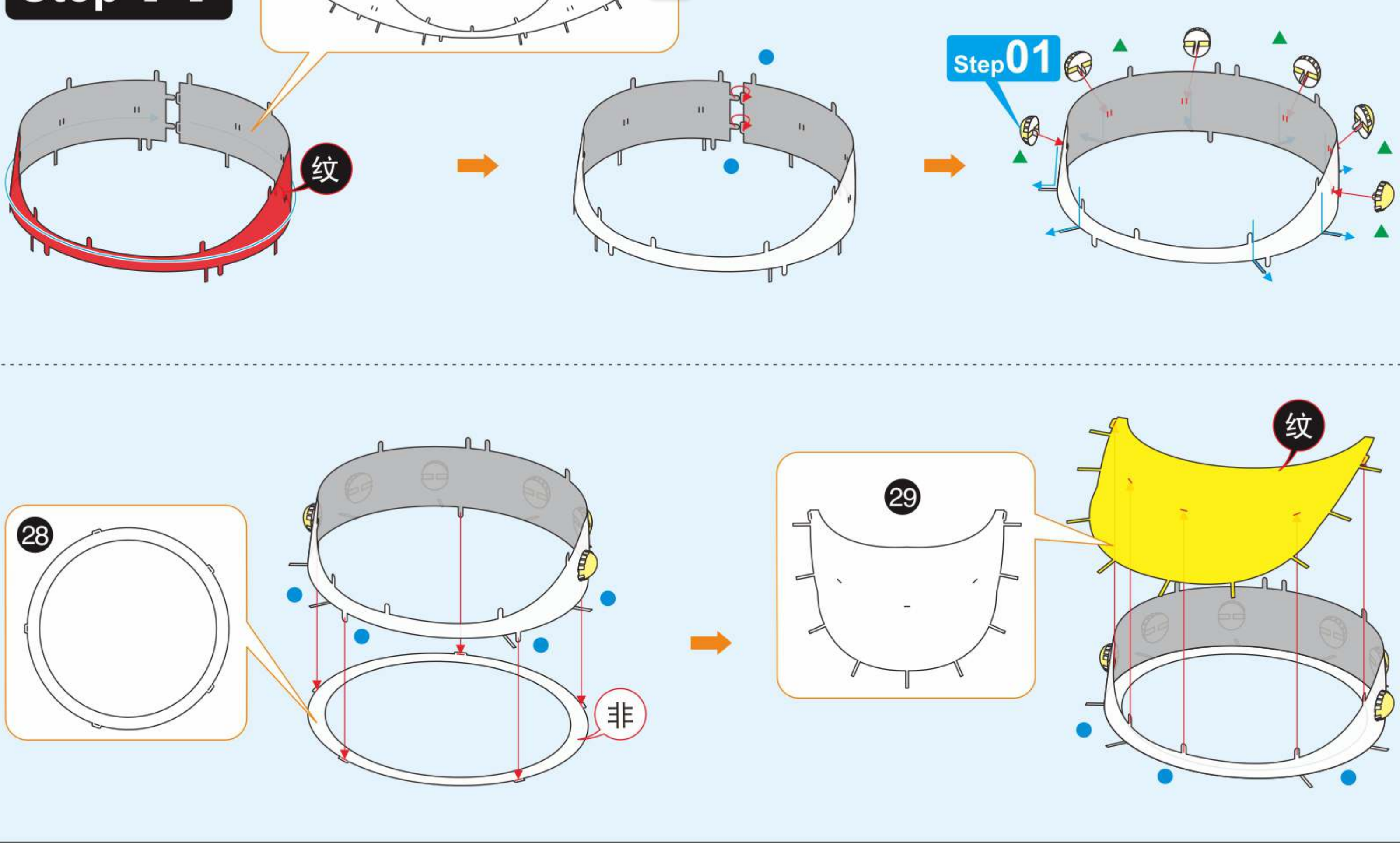
Step 09



Step 10



Step 11



5 6
7 8

