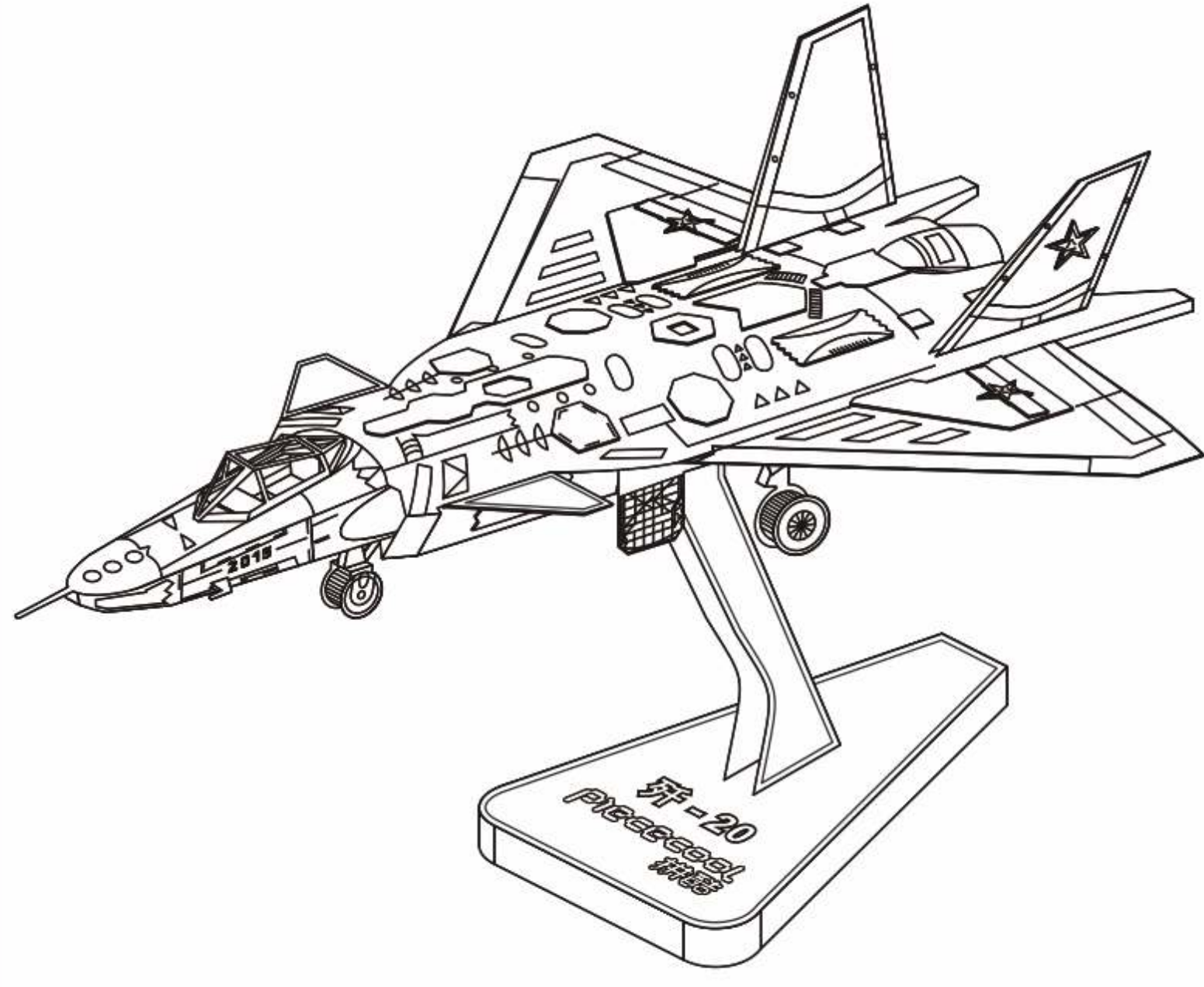


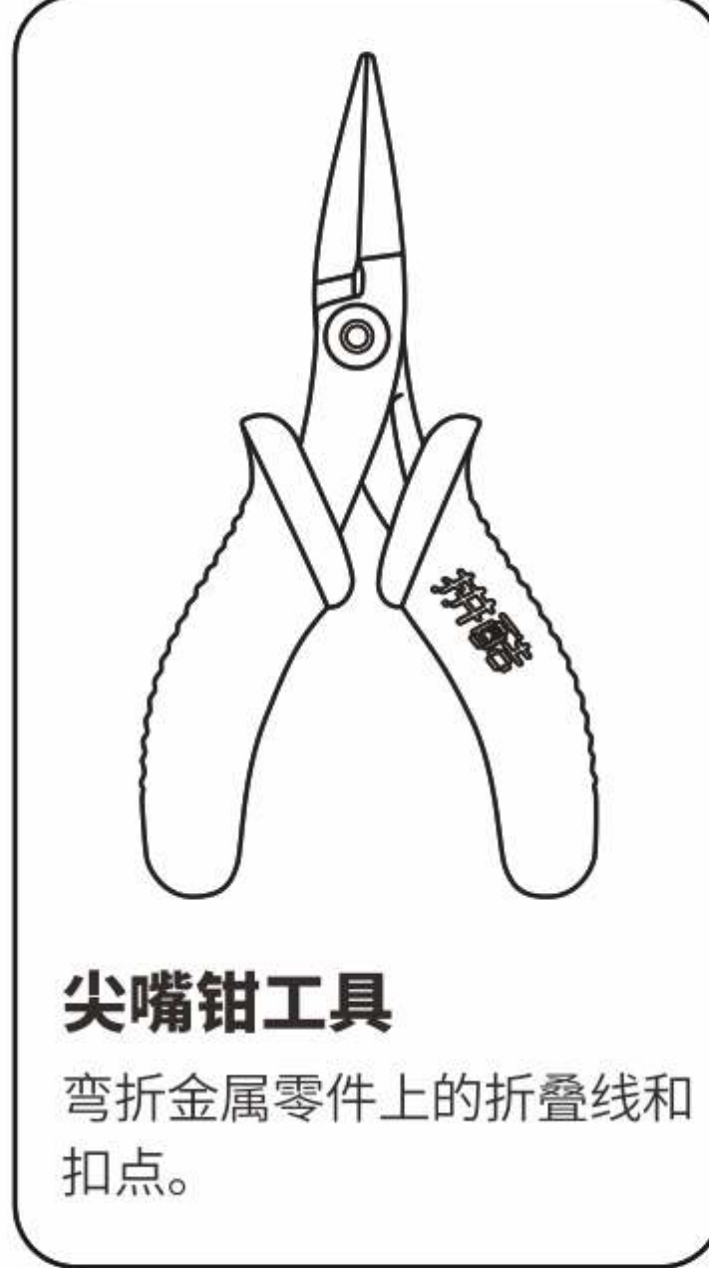
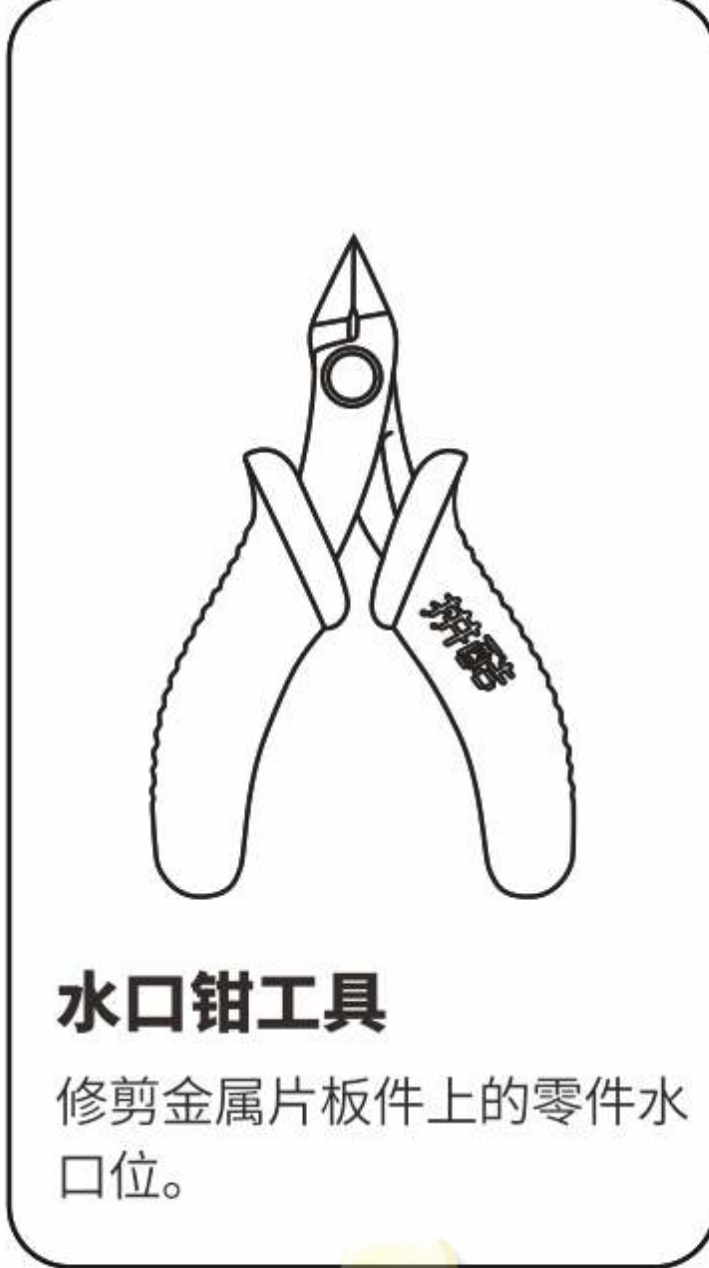
歼20战斗机 J20 JET P063



CP-ASSY-P063#-A2-20211217  
电子版下载地址: <http://www.piececool.com/cpsuoming/P063.pdf>

拼前需知

● 准备工具:



建议使用拼酷正品拼装工具(水口钳、尖嘴钳),拼装时更省心、省力,拼装后作品更精细、美观!

⚠️ 组装时请小心处理金属零件,以防划伤

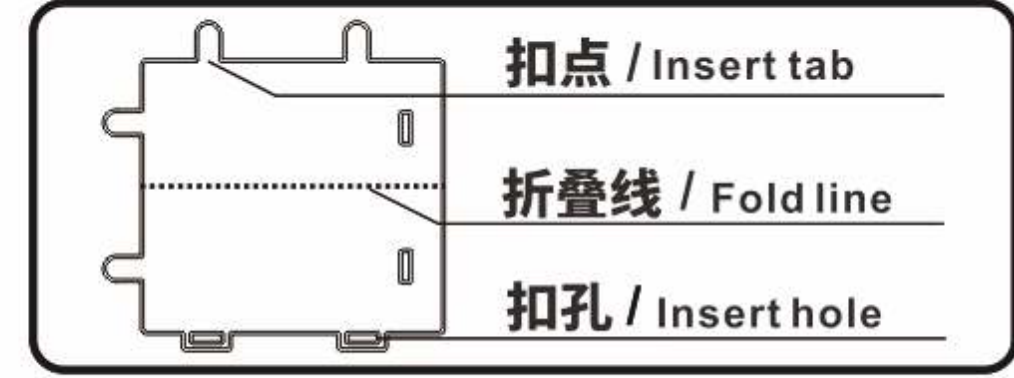
● 拼装方法:

a. 取下零件:



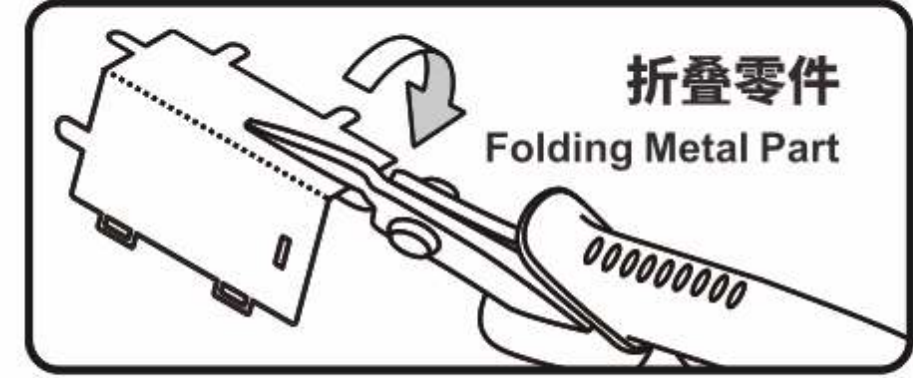
使用水口钳剪断金属零件上的水口,将需要的金属零件从金属片板件取下

b. 识别零件:



识别金属零件上的扣点,折叠线,扣孔的样子

c. 折叠零件:



使用尖嘴钳,参照拼装说明书将金属零件折成形状

d. 固定零件:



● 插入扣孔,平折90°

▲ 插入扣孔,旋转90°

● 注意事项:

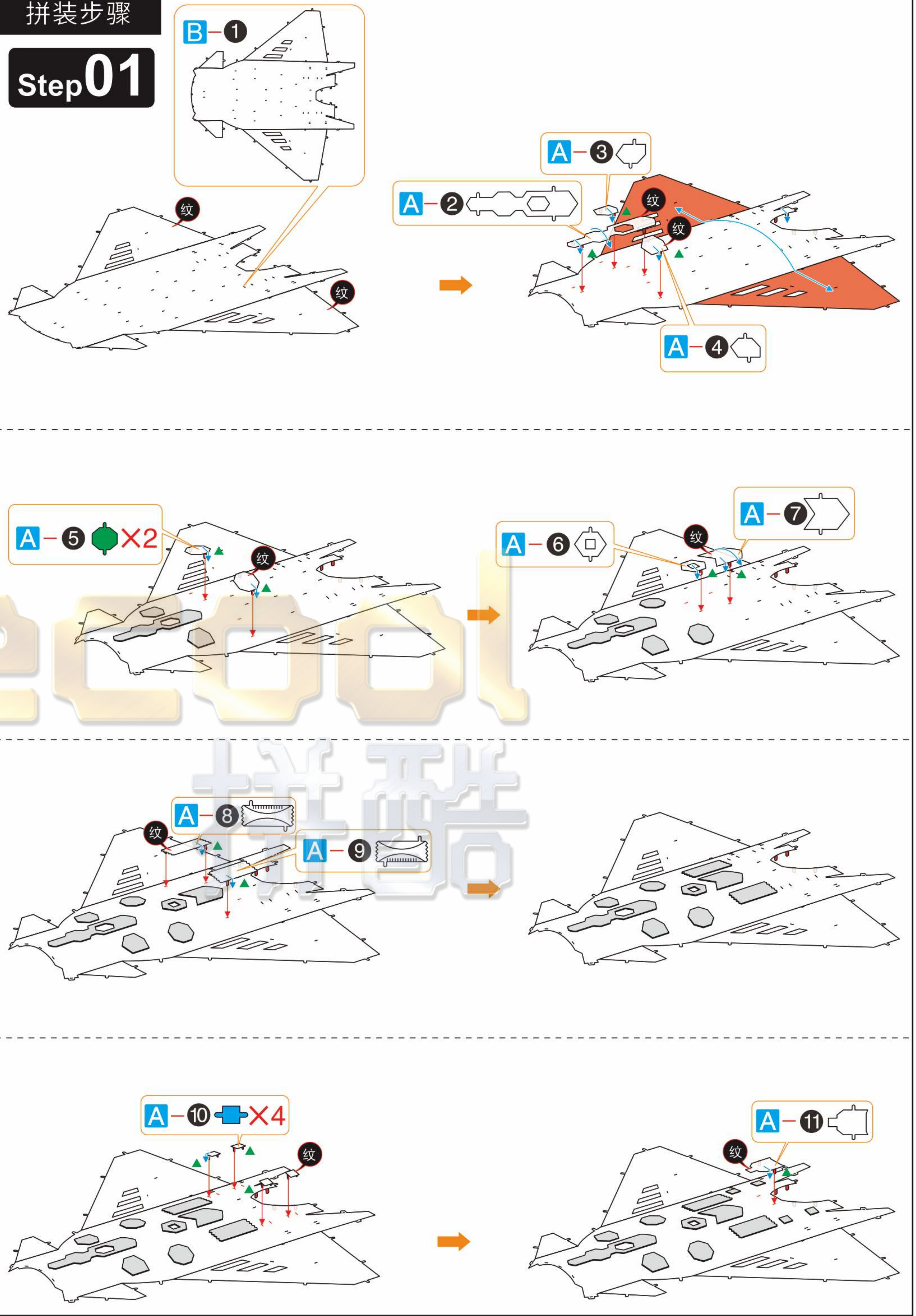


剪金属零件时请剪零件“水口位”,请勿将“扣点”当成“水口位”剪下,每次剪零件时请仅剪当前步骤的零件,切勿一次性将所有零件全部剪下,避免丢失;  
当遇到折叠线的零件,请注意金属片的正反面及拼折方向,请按照说明书的方向,轻剪慢折,最好一次性折叠完成,请勿反复折叠,避免零件损坏。

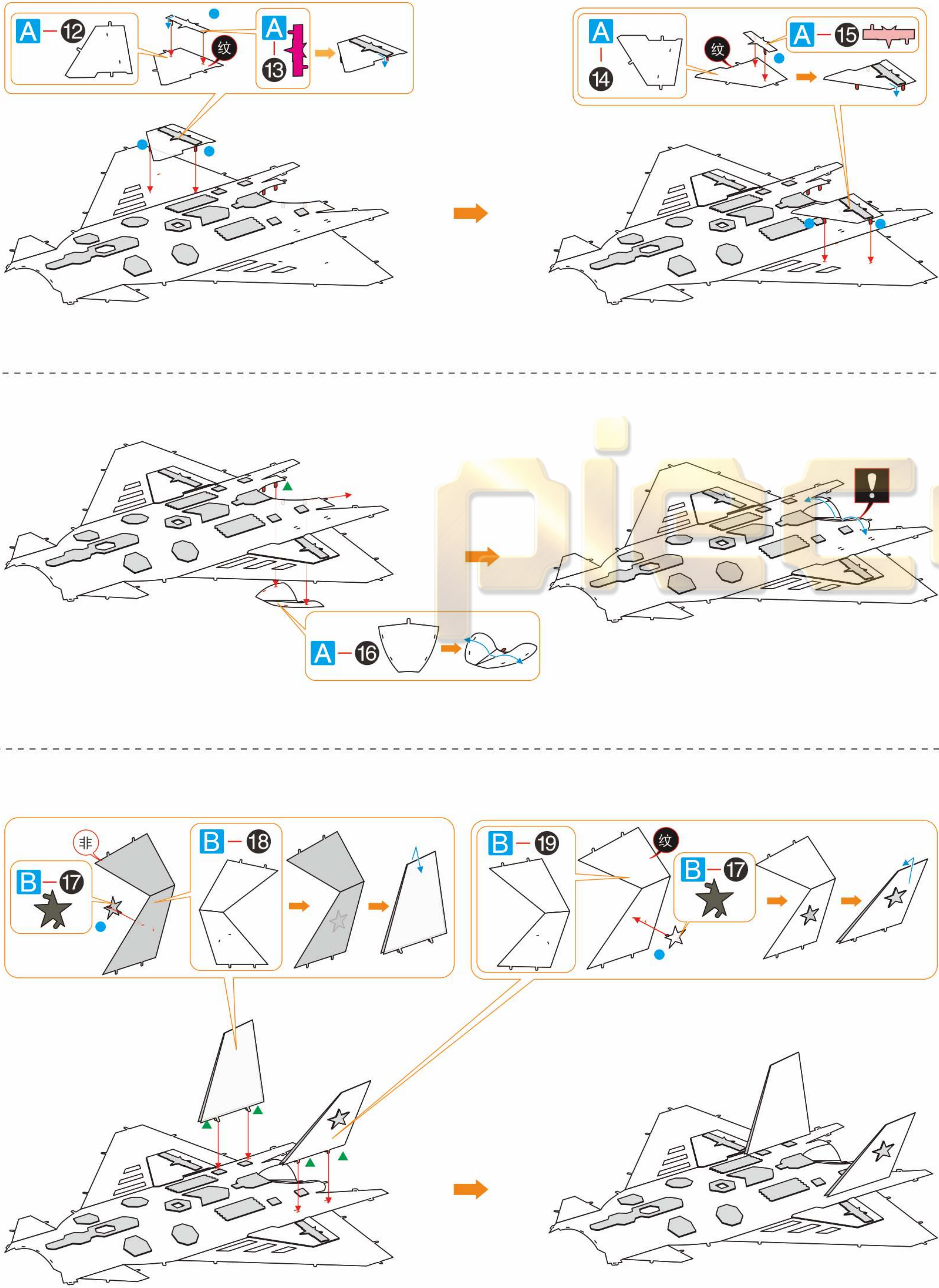
© Dongguan Weishi Culture Technology Co.,Ltd. All rights reserved.

拼装步骤

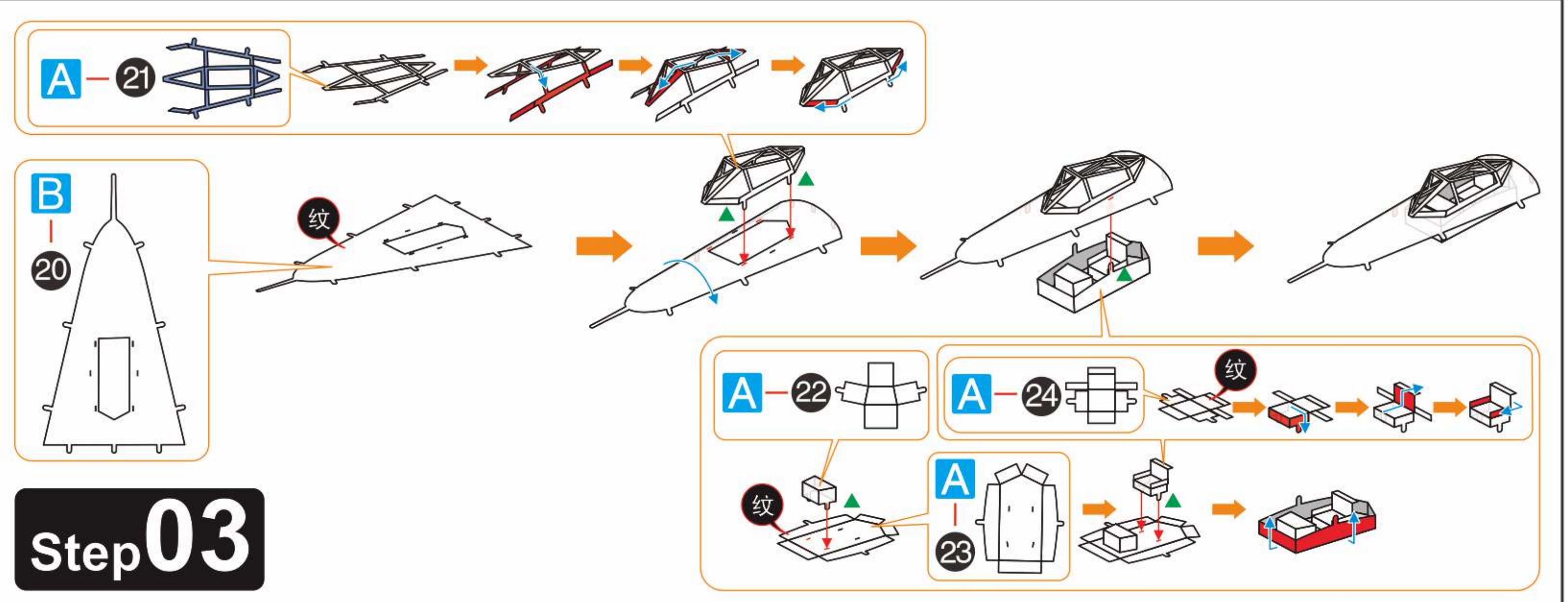
Step 01



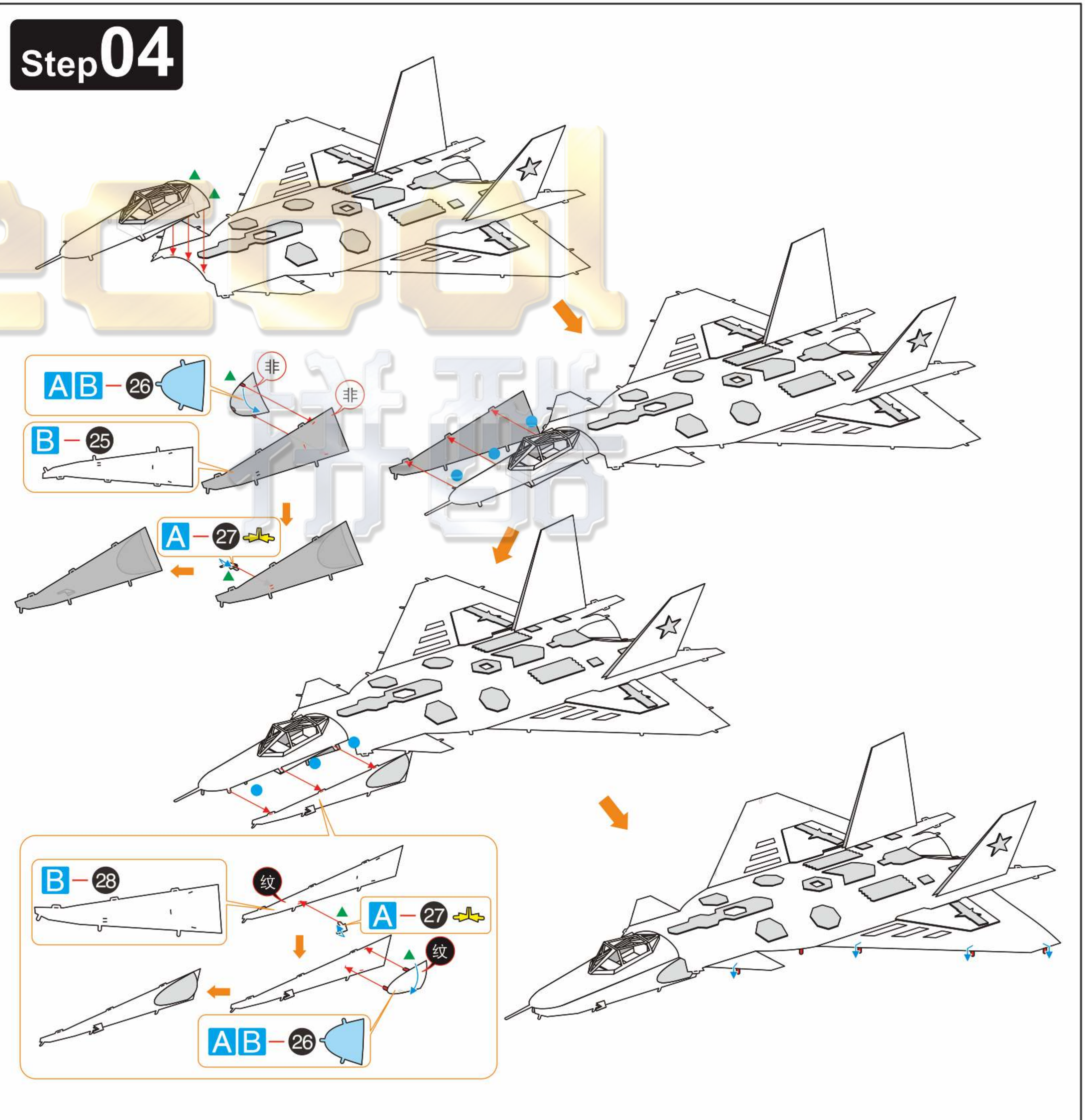
Step 02



Step 03



Step 04





### Step 05

Assembly diagrams for Step 05 showing the construction of the fuselage. Key parts and callouts include:

- A-29
- A-30
- A-31
- A-32 X2
- A-33
- A-34
- B-35
- B-36
- B-37
- A-38

### Step 06

Assembly diagrams for Step 06 showing the construction of the wing and tail section. Key parts and callouts include:

- A-38
- B-39 X2
- A-13
- B-40
- B-41
- A-42
- A-43
- B-44
- A-45
- A-46
- A-47
- B-48 X2
- A-15
- B-49
- B-50
- B-51

### Step 07

Assembly diagrams for Step 07 showing the construction of the fuselage. Key parts and callouts include:

- A-52
- A-53
- B-54

### Step 08

Assembly diagrams for Step 08 showing the construction of the fuselage. Key parts and callouts include:

- B-55
- B-56
- B-57 X2
- B-58
- B-59 X2