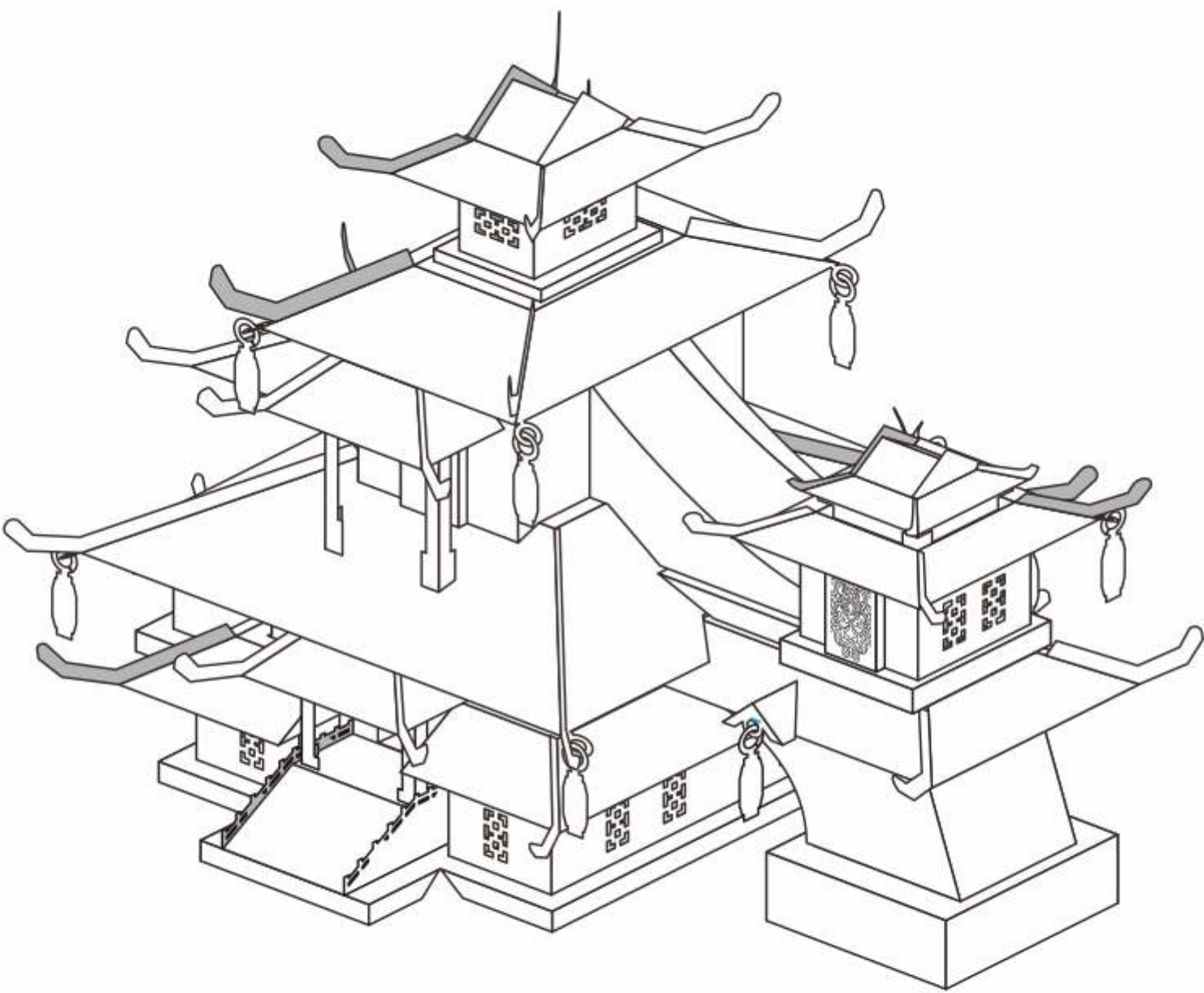


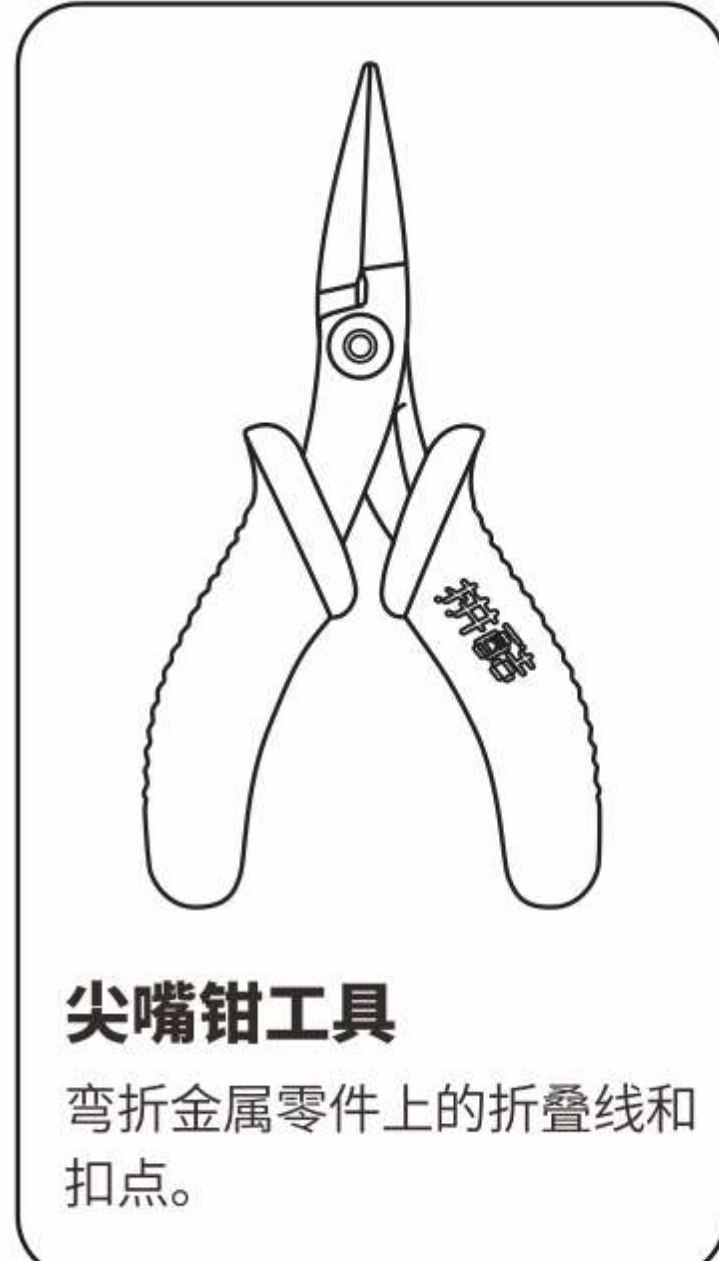
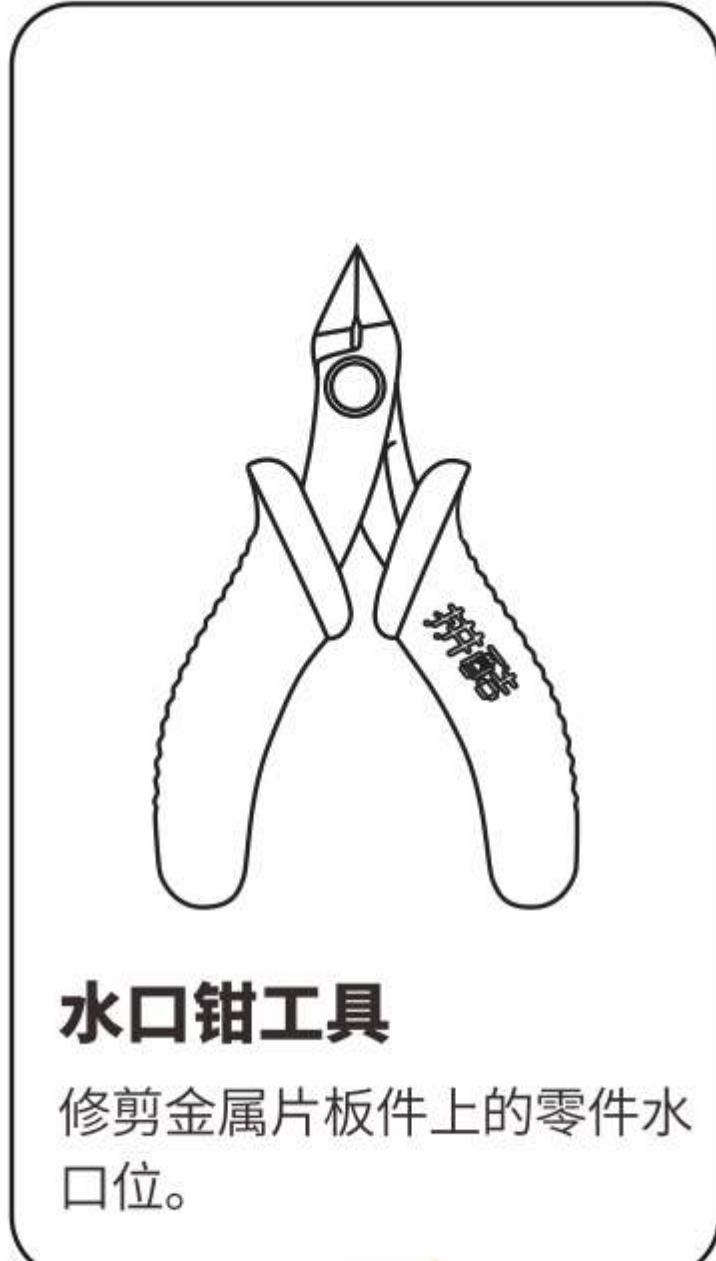
玲珑怡红院  
SOCIAL CLUB  
M007



CP-ASSY-M007#-A1-20210916  
电子版下载地址: <http://www.piececool.com/cpsuoming/M007.pdf>

拼前需知

● 准备工具:



建议使用拼酷正品拼装工具(水口钳、尖嘴钳), 拼装时更省心、省力, 拼装后作品更精细、美观!

⚠️ 组装时请小心处理金属零件, 以防划伤

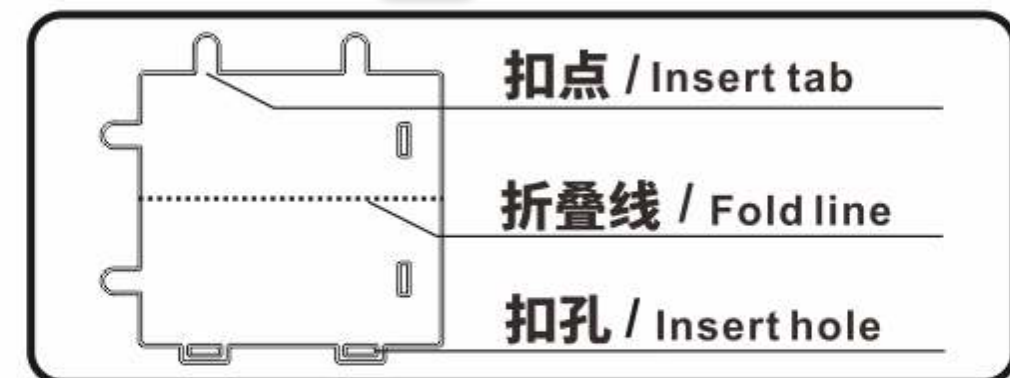
● 拼装方法:

a. 取下零件:



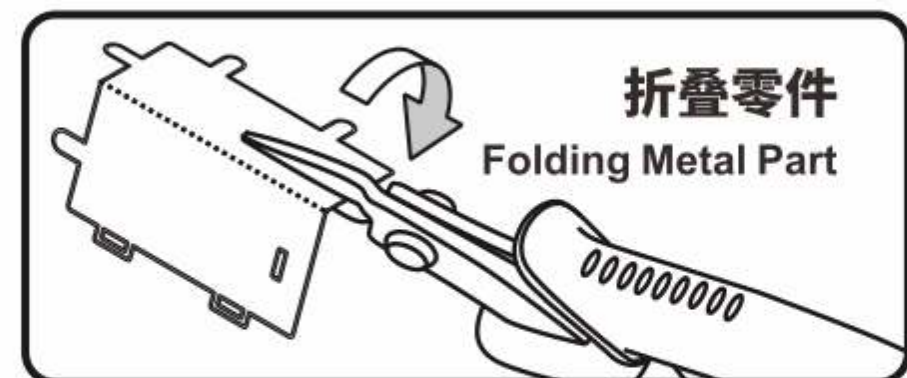
使用水口钳剪断金属零件上的水口, 将需要的金属零件从金属片板件取下

b. 识别零件:



识别金属零件上的扣点, 折叠线, 扣孔的样子

c. 折叠零件:



使用尖嘴钳, 参照拼装说明书将金属零件折成形状

d. 固定零件:



● 插入扣孔, 平折90°



▲ 插入扣孔, 旋转90°

● 注意事项:

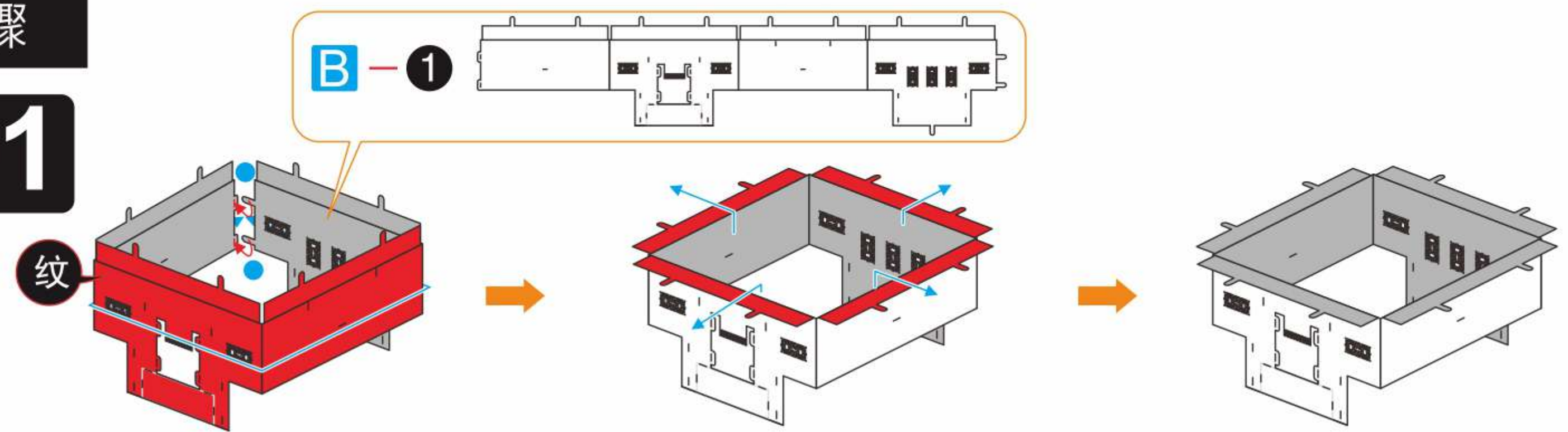


剪金属零件时请剪零件“水口位”, 请勿将“扣点”当成“水口位”剪下, 每次剪零件时请仅剪当前步骤的零件, 切勿一次性将所有零件全部剪下, 避免丢失;  
当遇到折叠线的零件, 请注意金属片的正反面及拼折方向, 请按照说明书的方向, 轻剪慢折, 最好一次性折叠完成, 请勿反复折叠, 避免零件损坏。

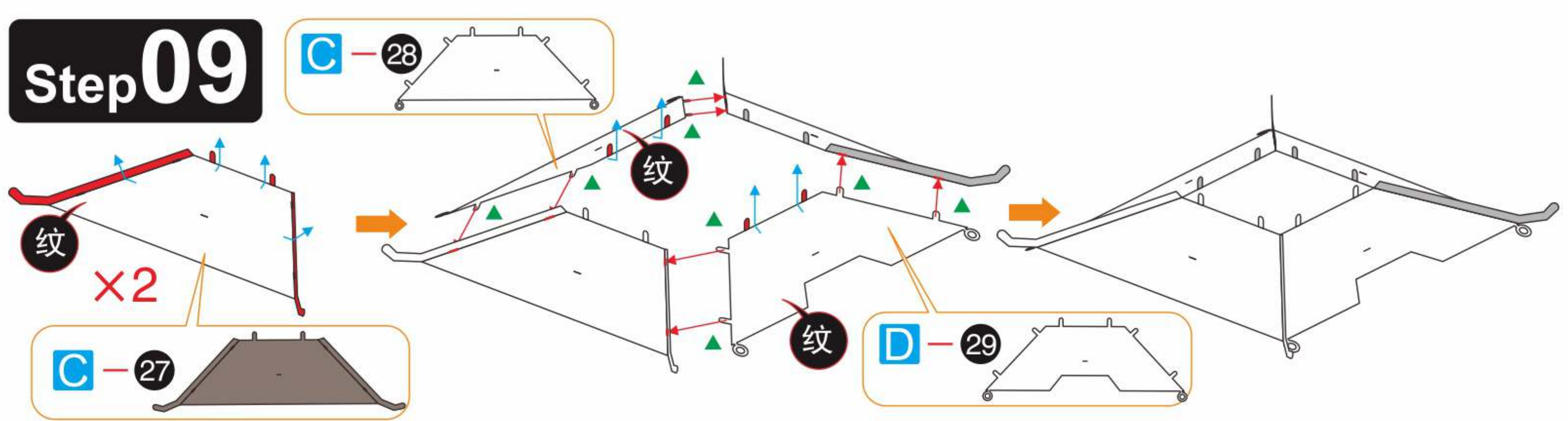
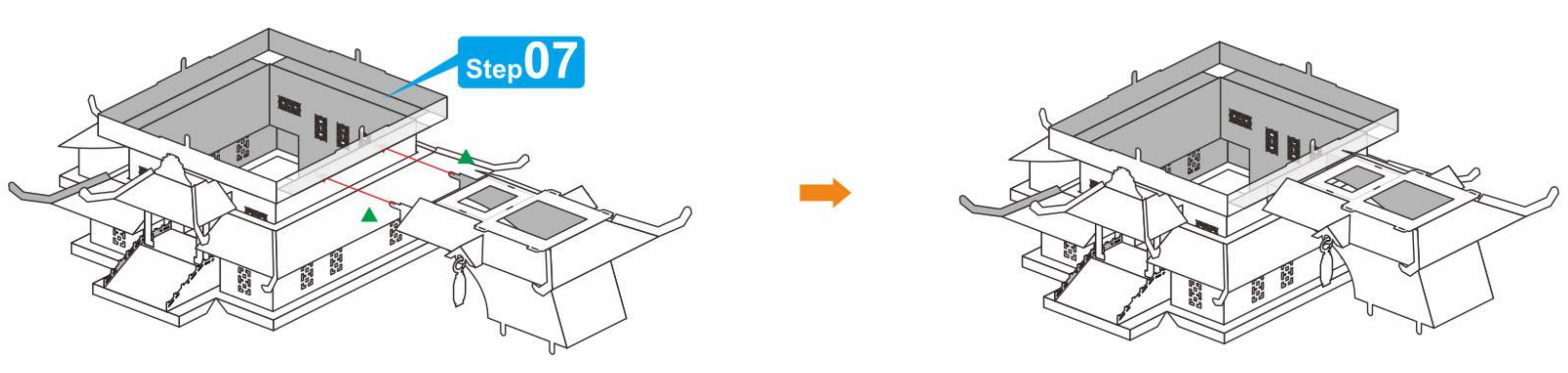
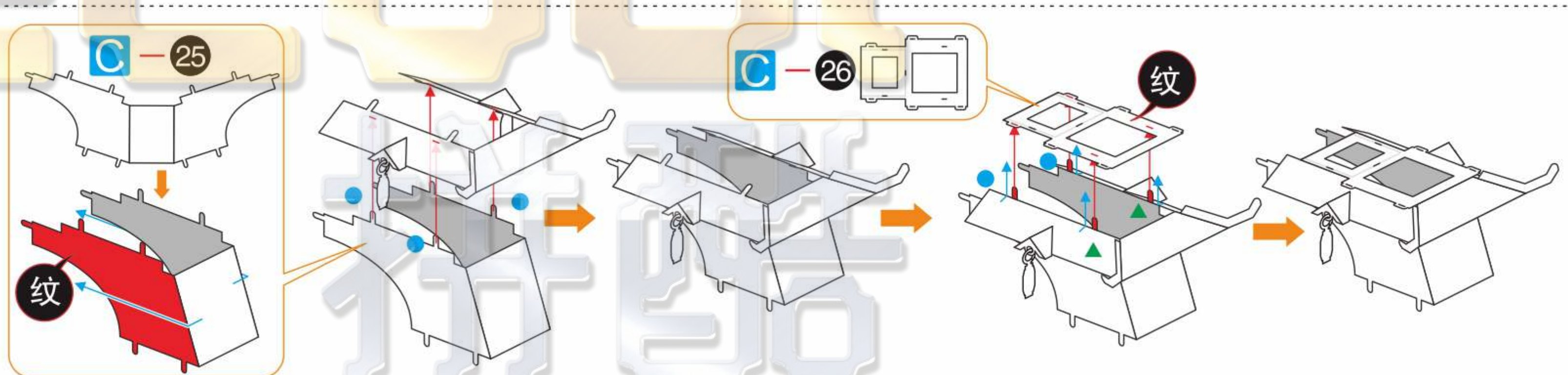
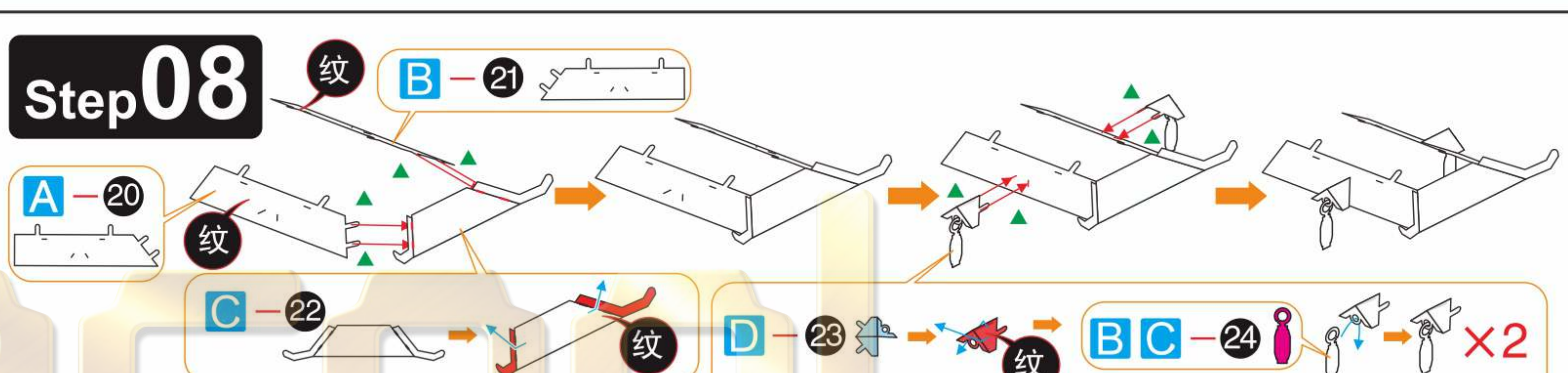
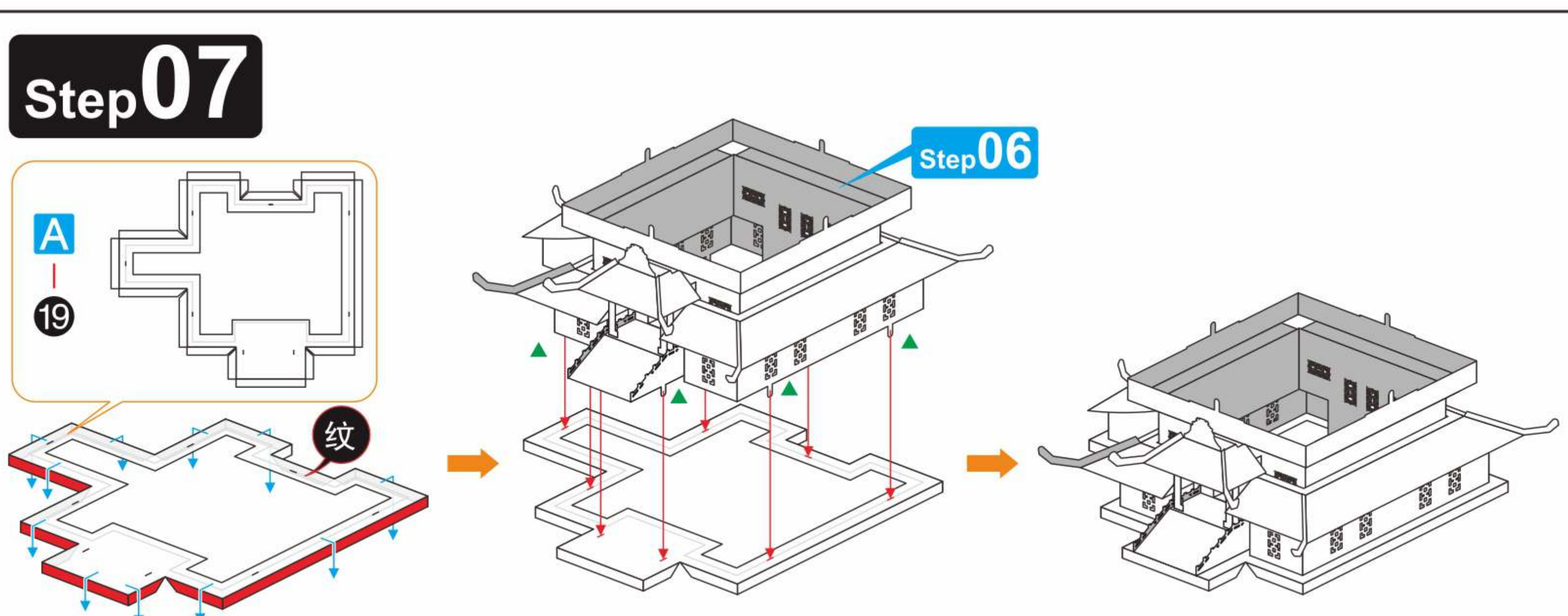
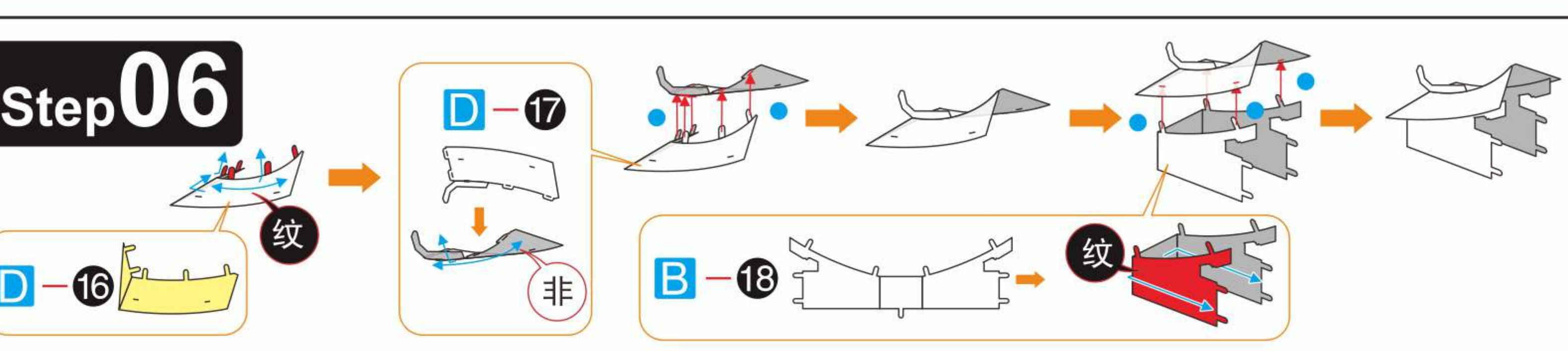
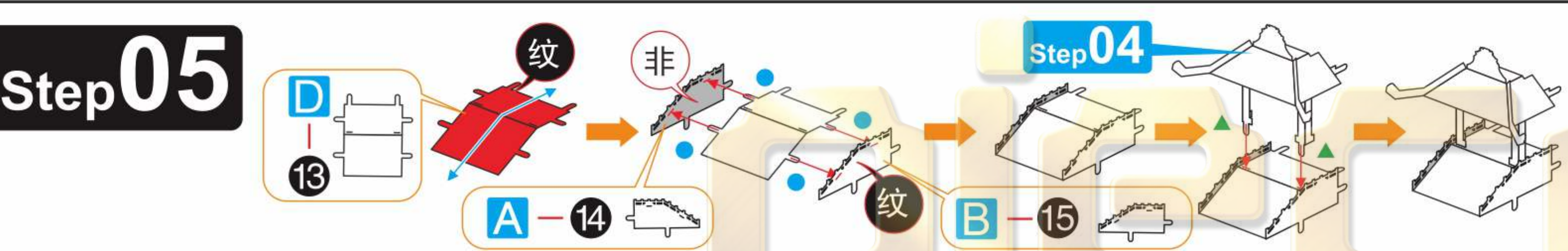
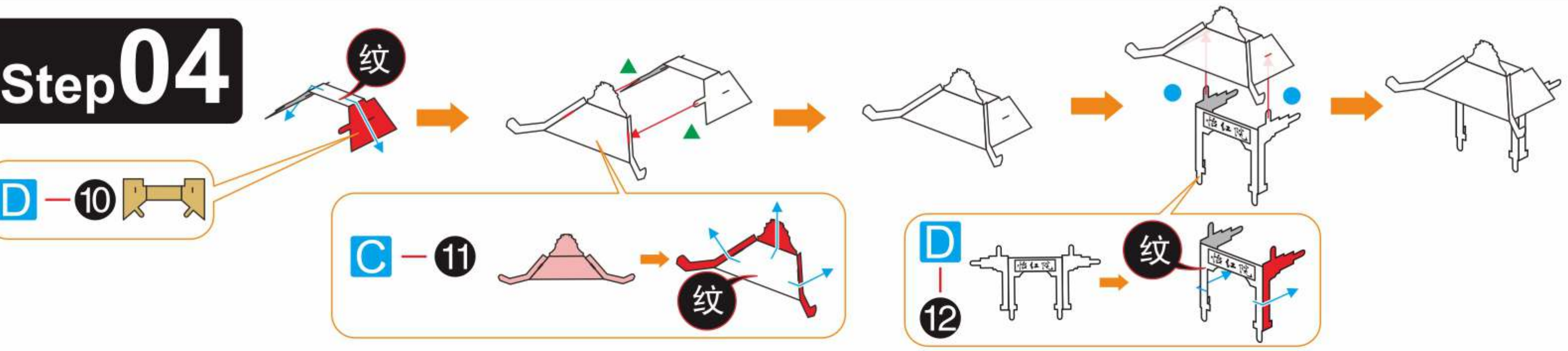
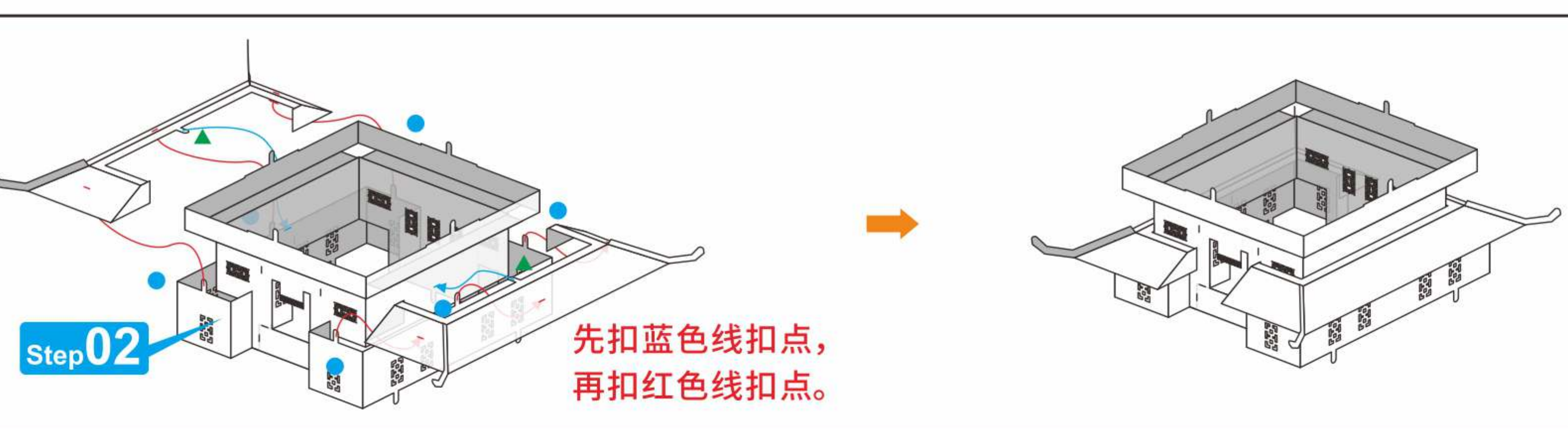
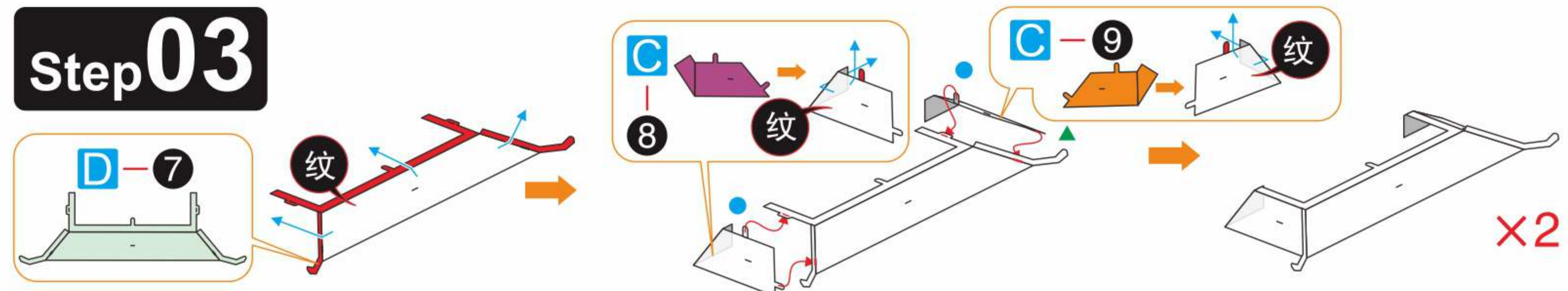
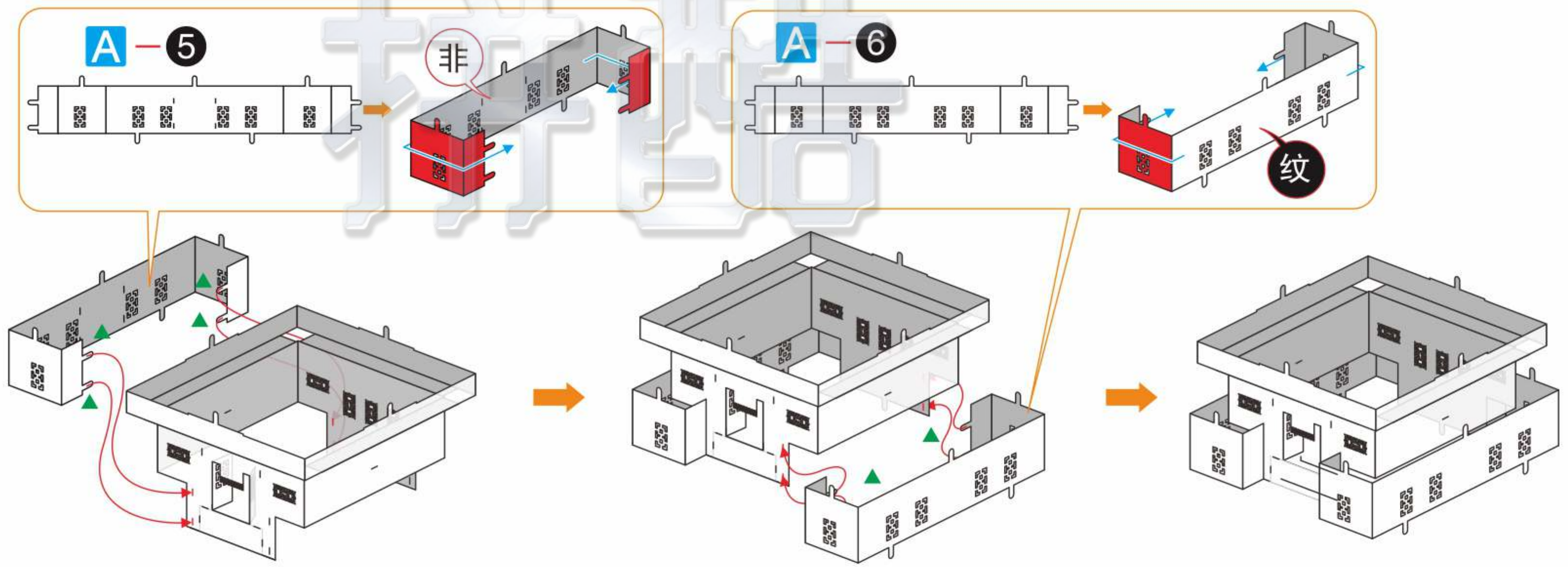
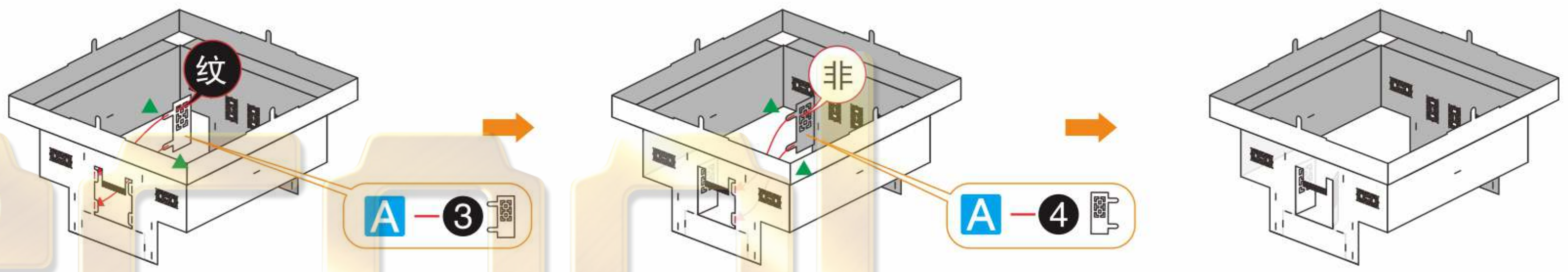
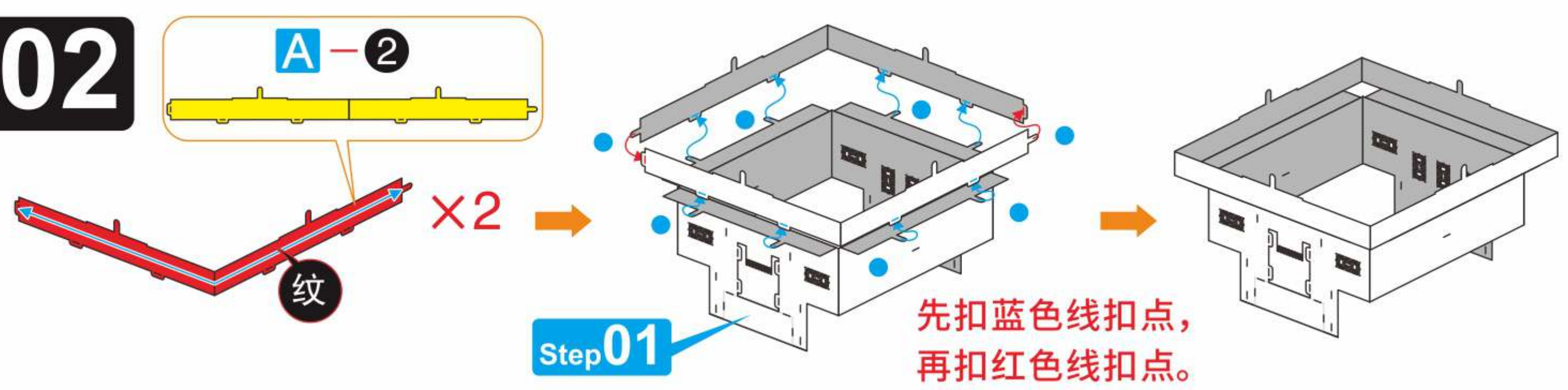
© Dongguan Weishi Culture Technology Co.,Ltd. All rights reserved.

拼装步骤

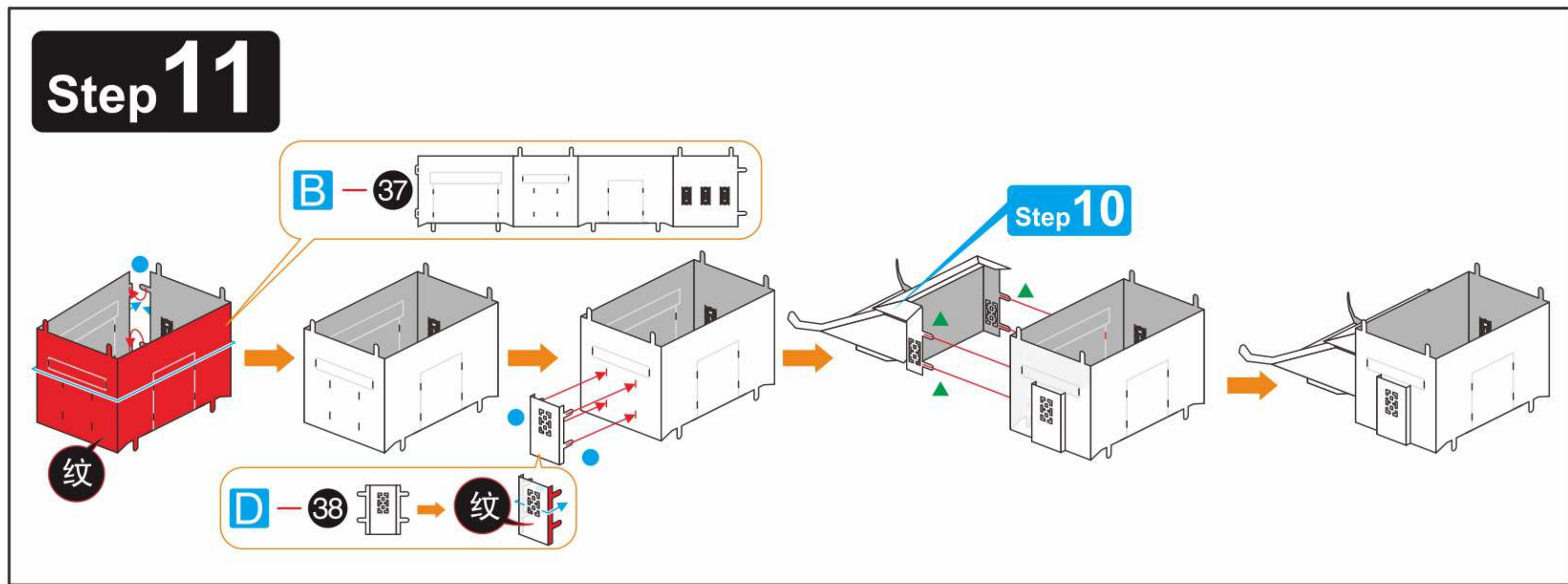
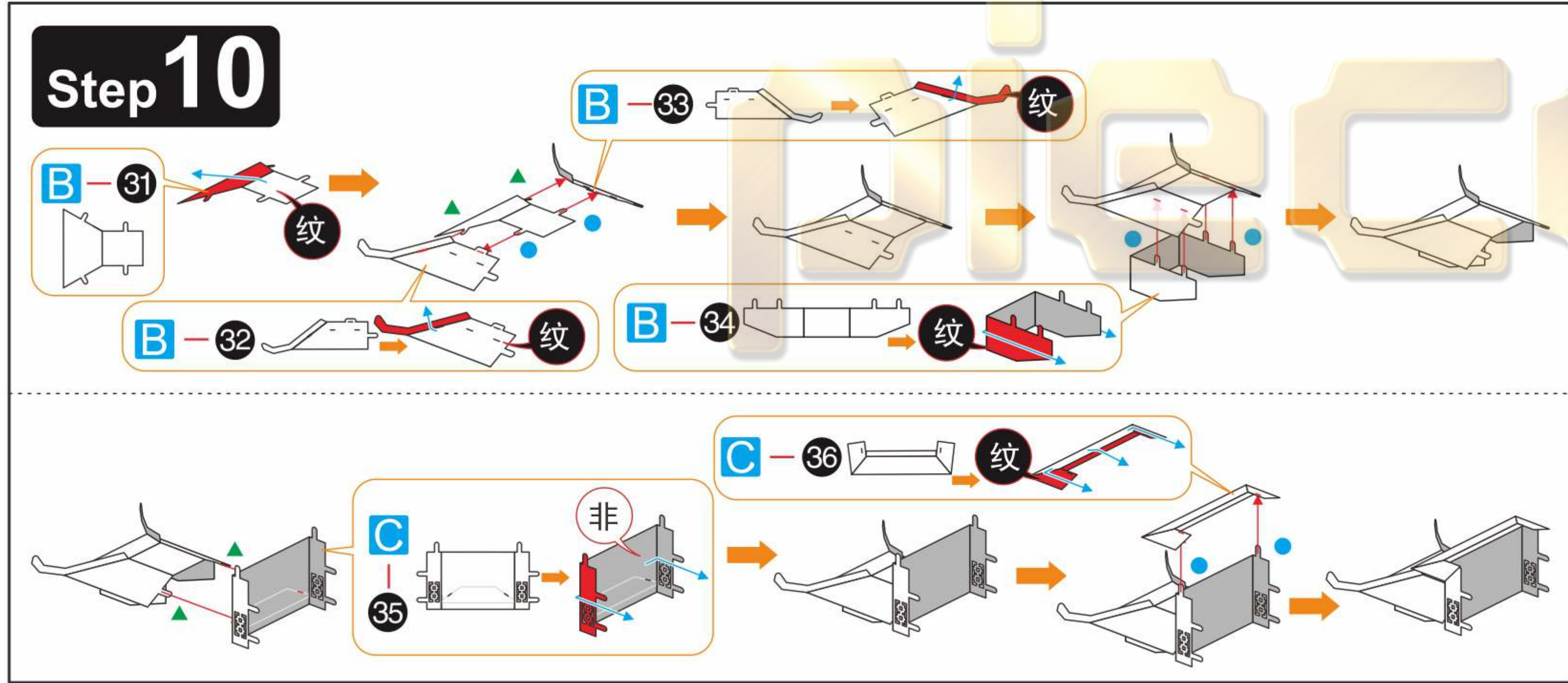
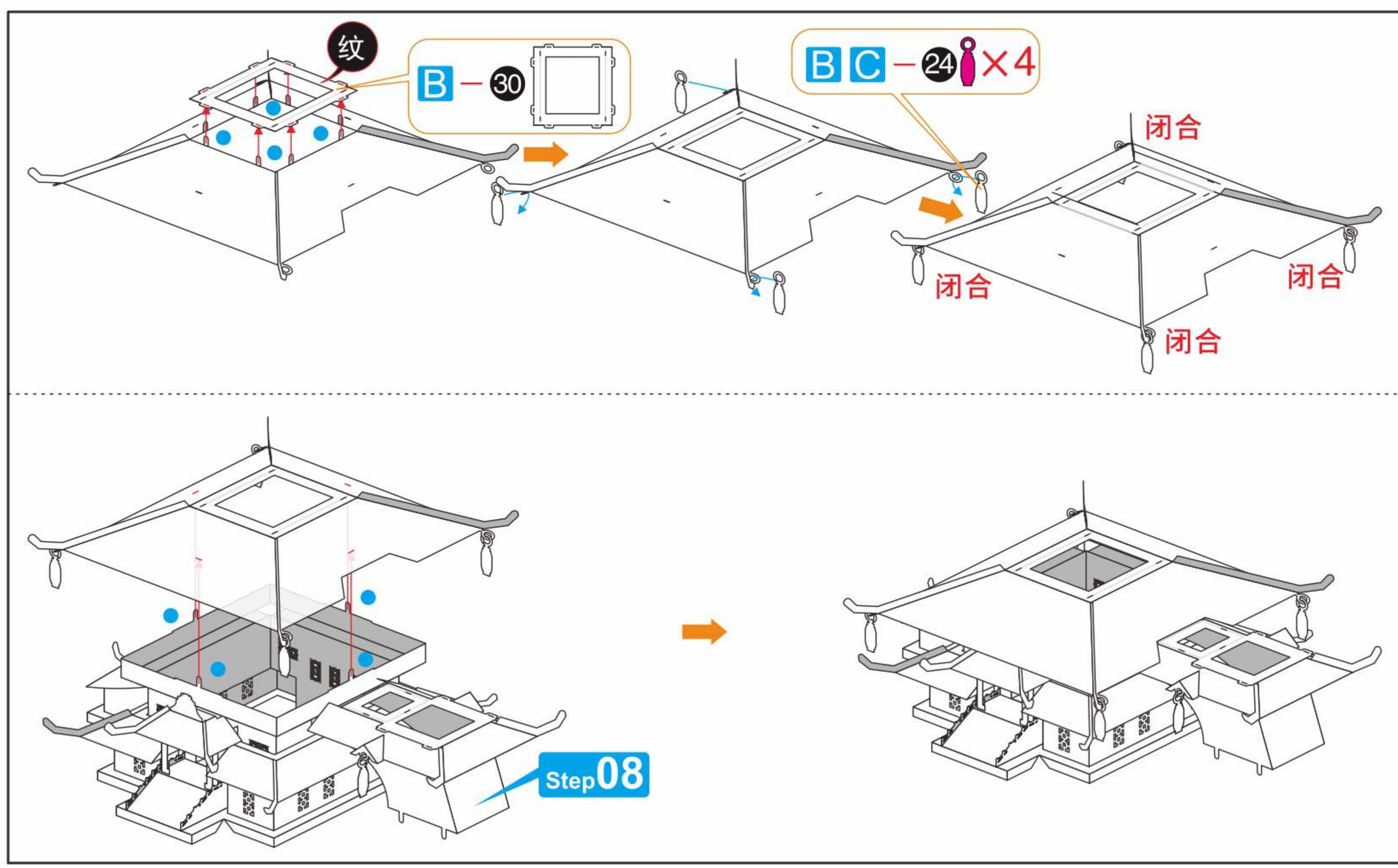
Step01



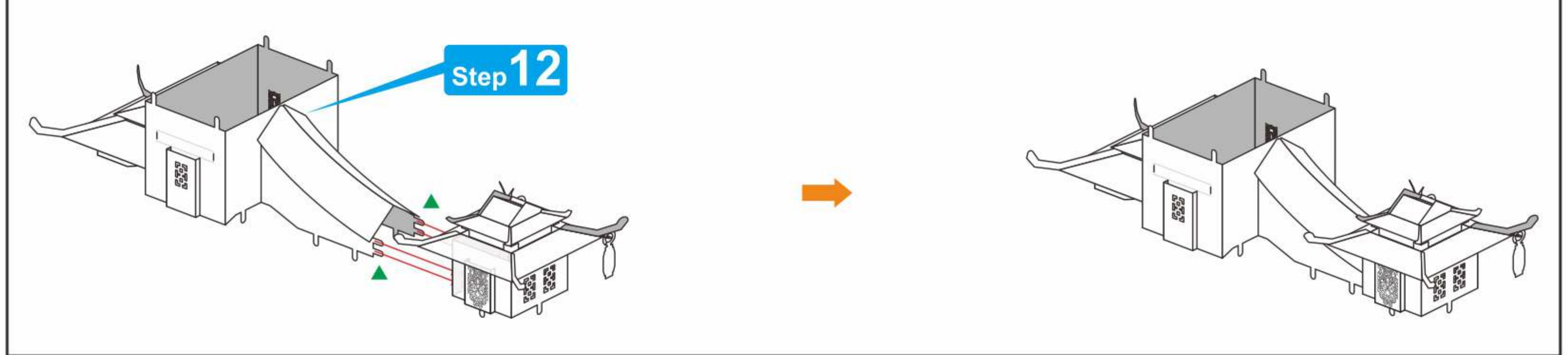
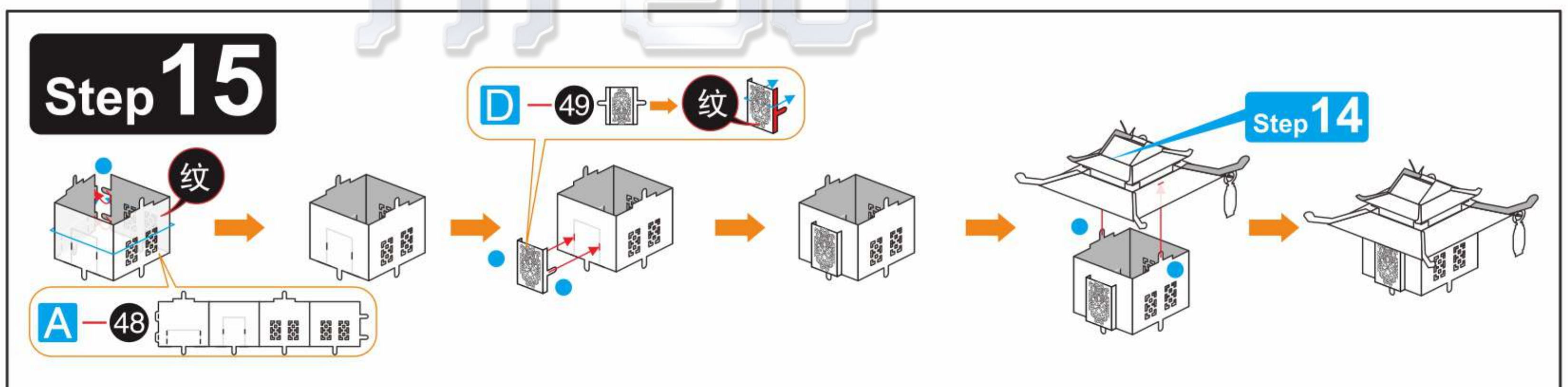
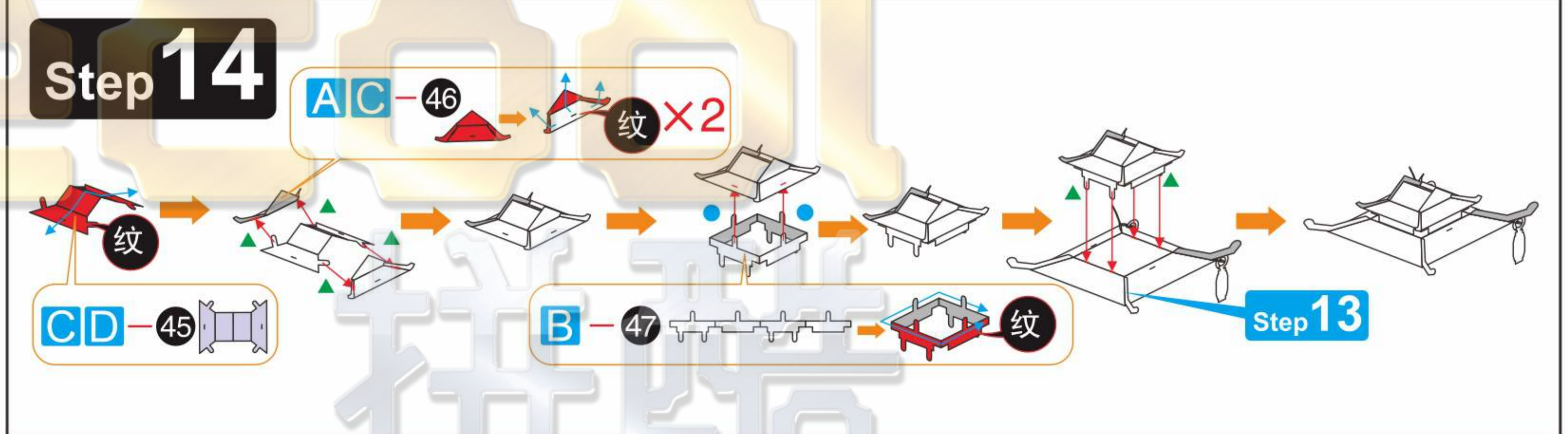
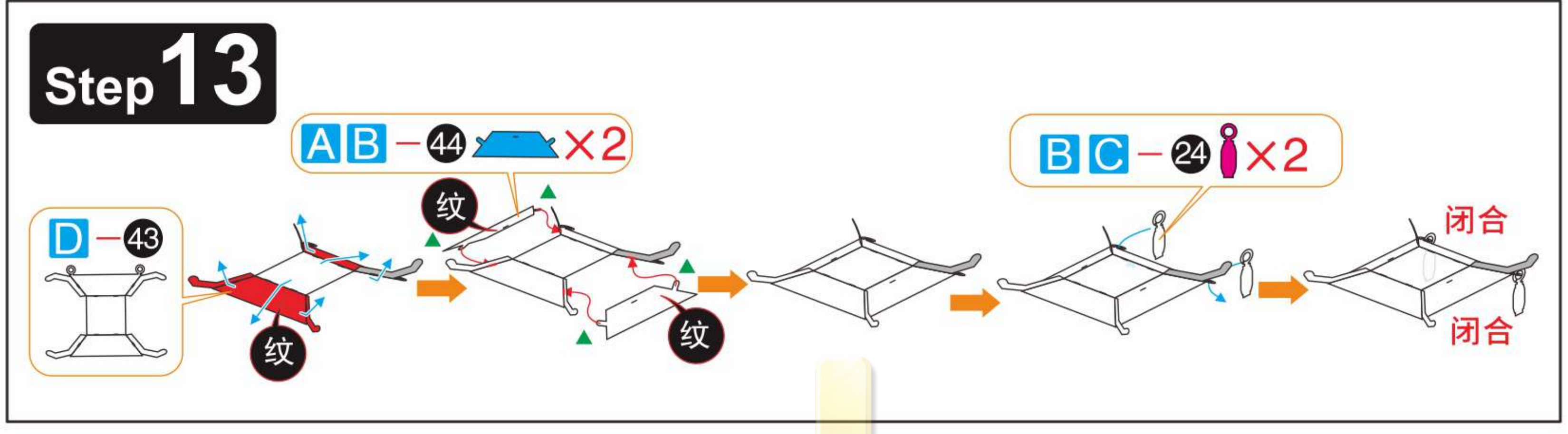
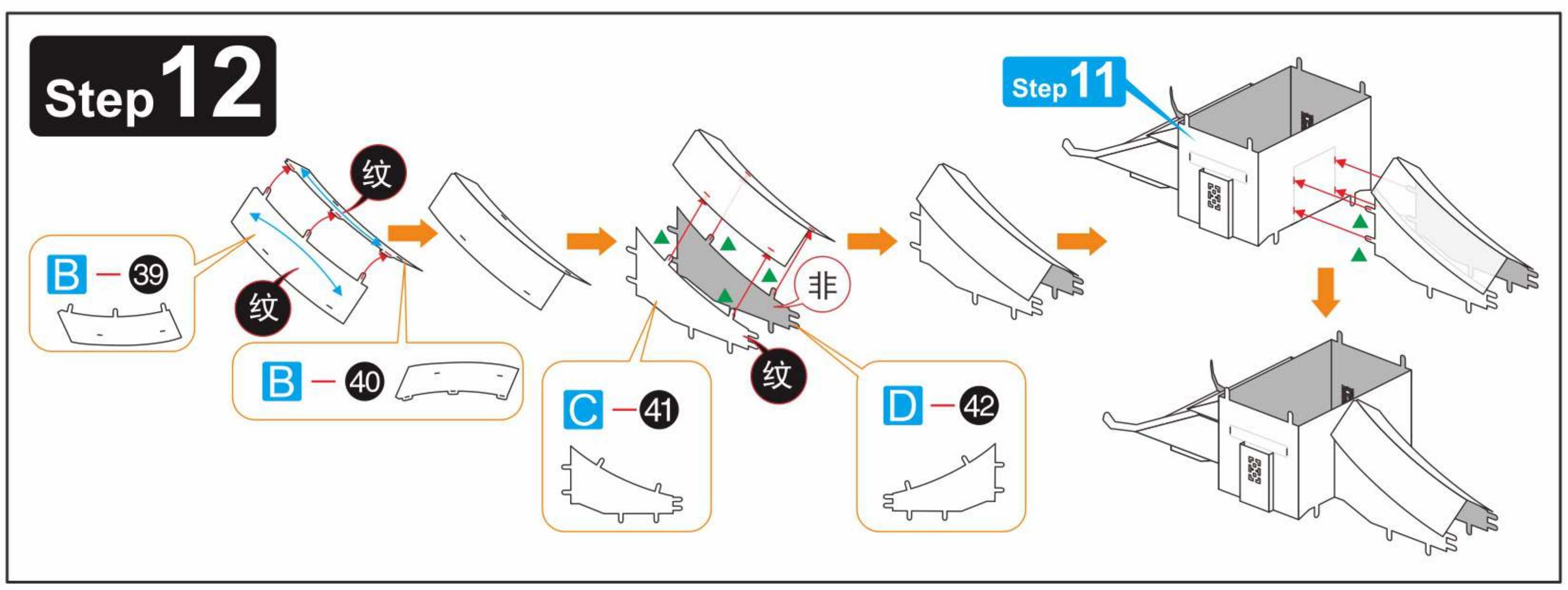
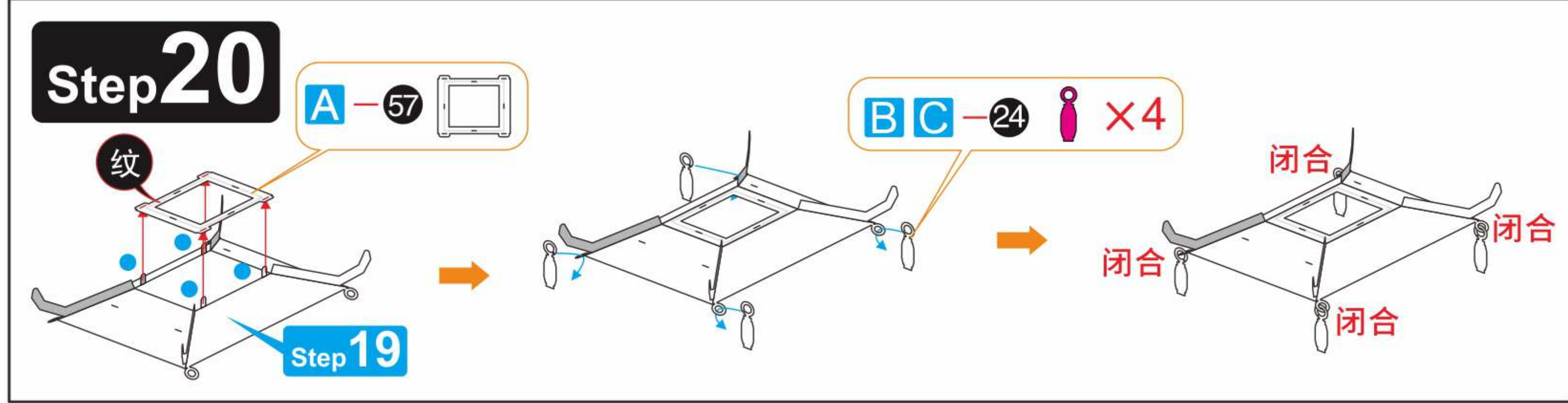
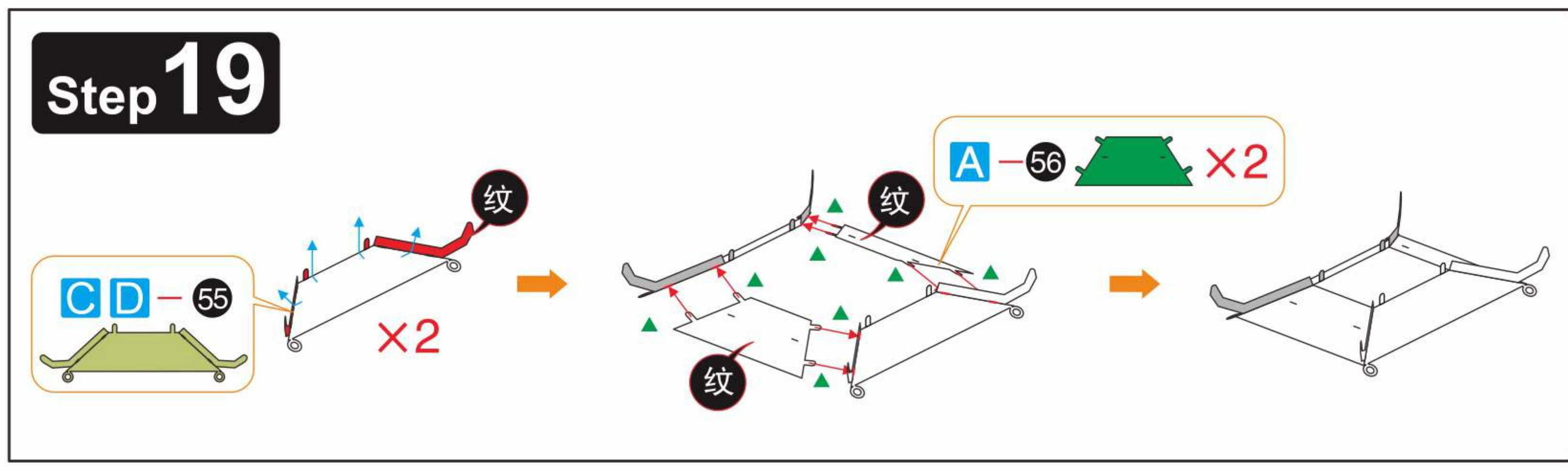
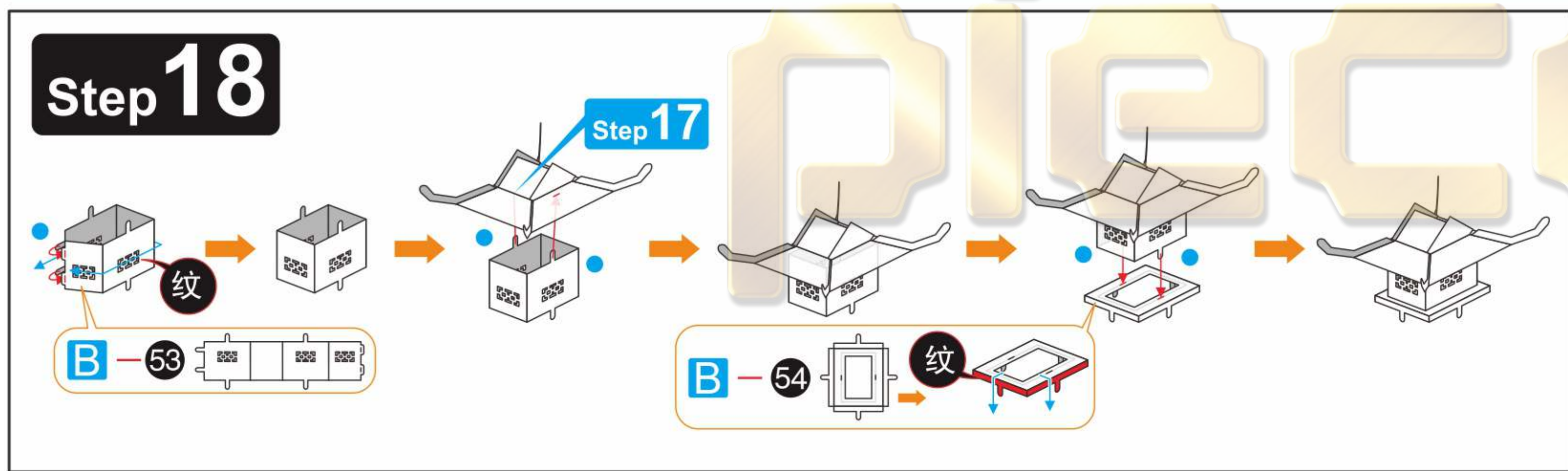
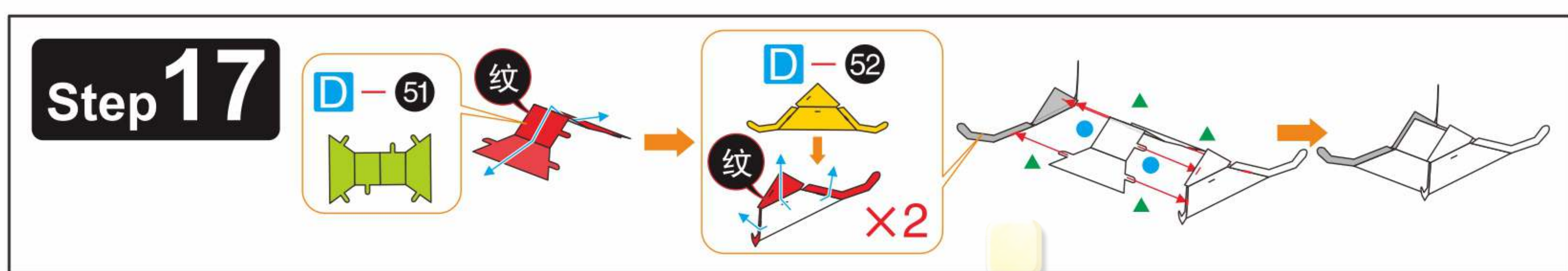
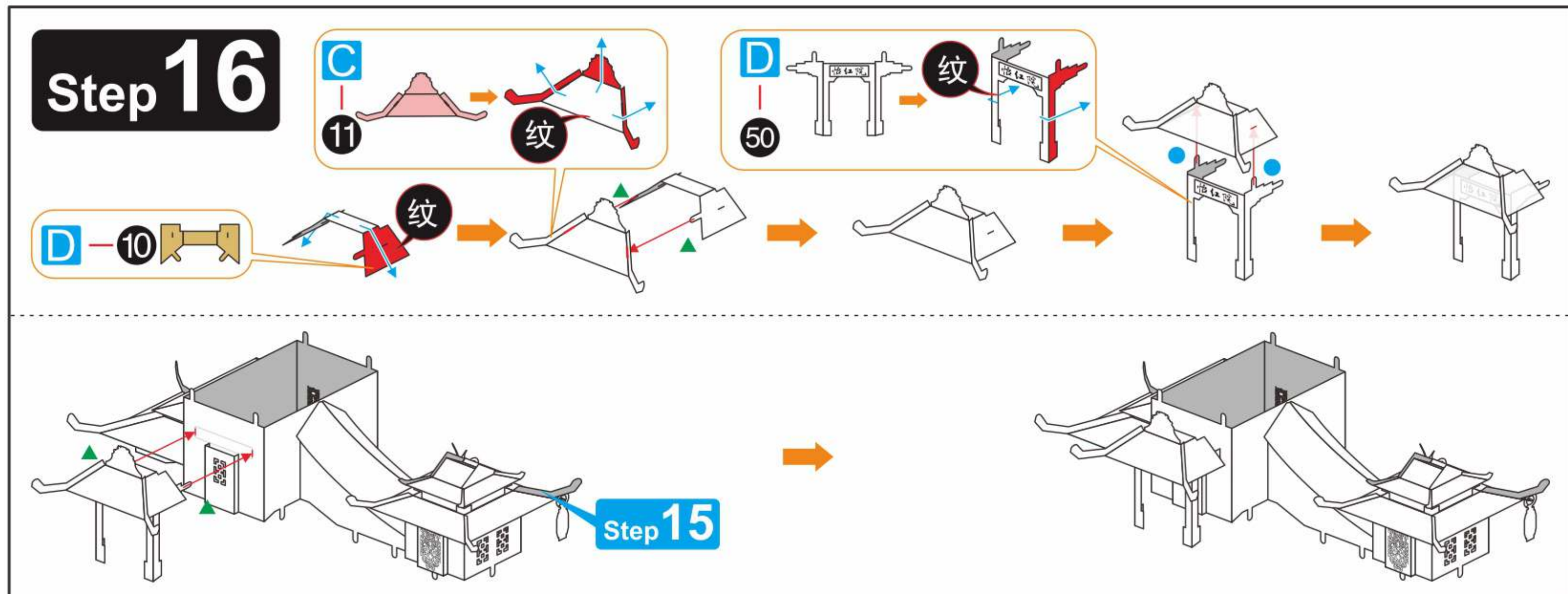
Step02







5 6  
7 8



5 6  
7 8

