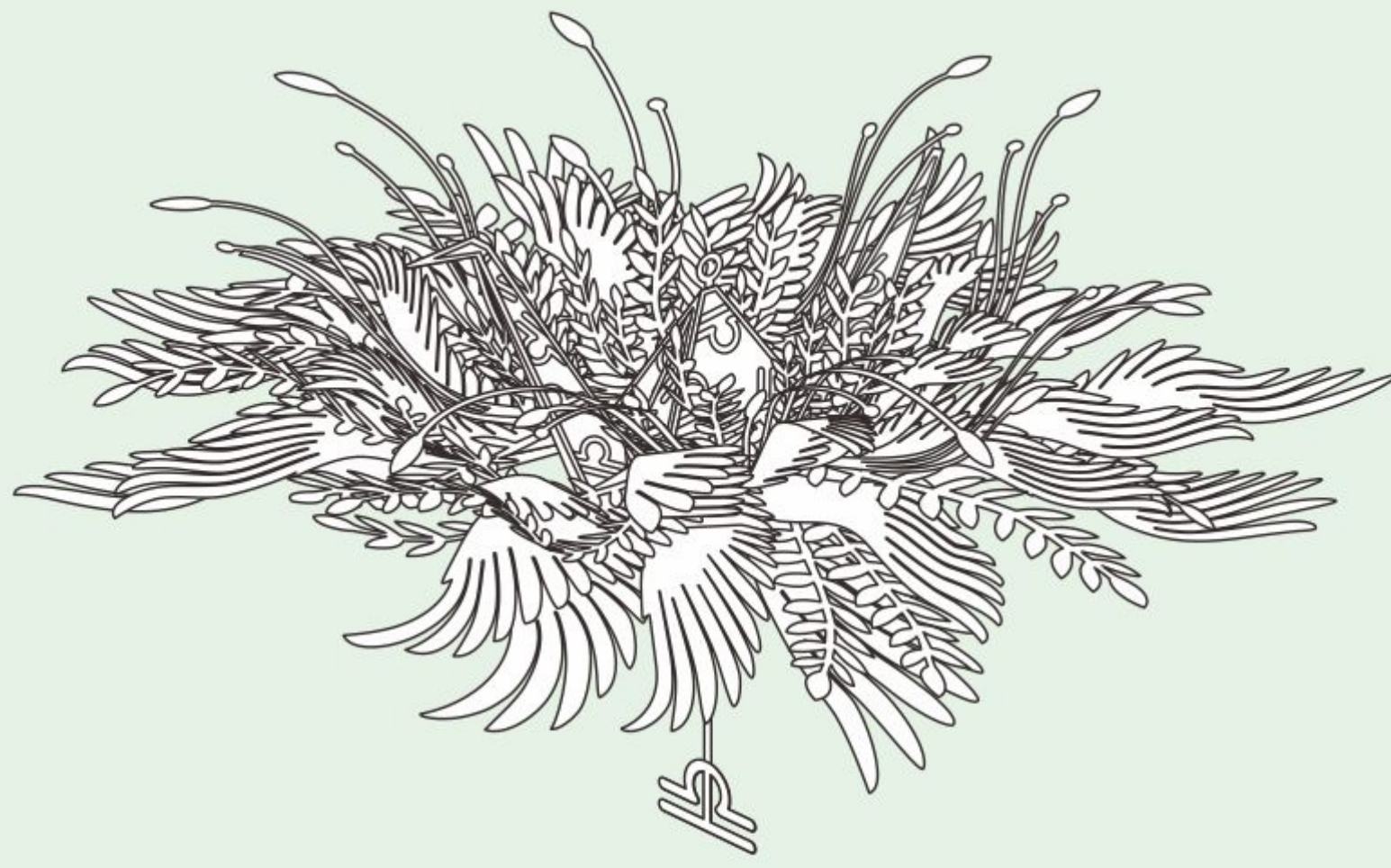
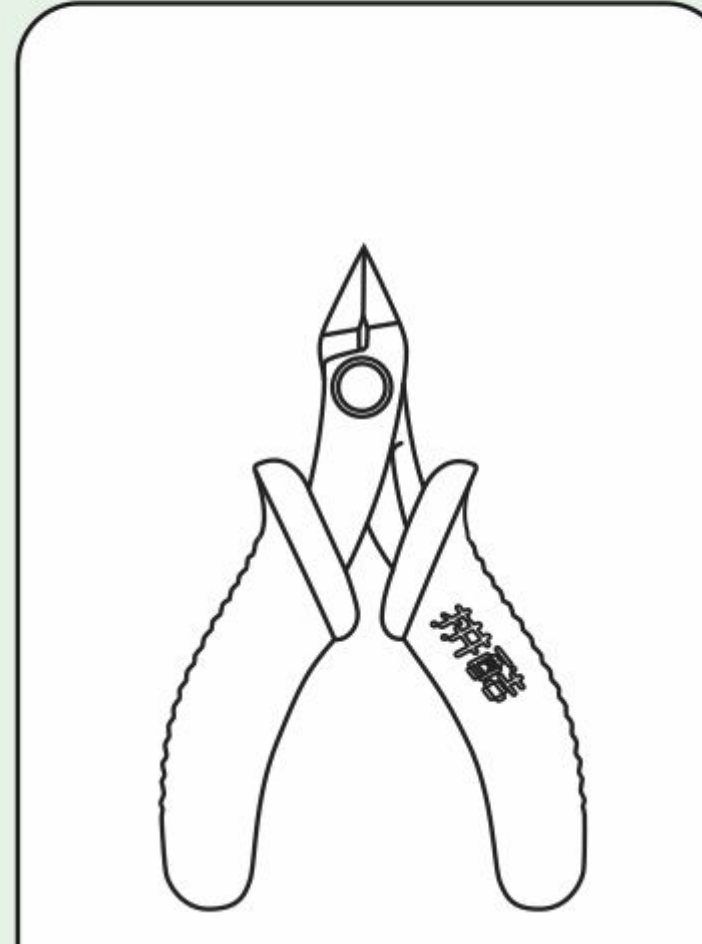


天秤座  
LIBRA  
IP070



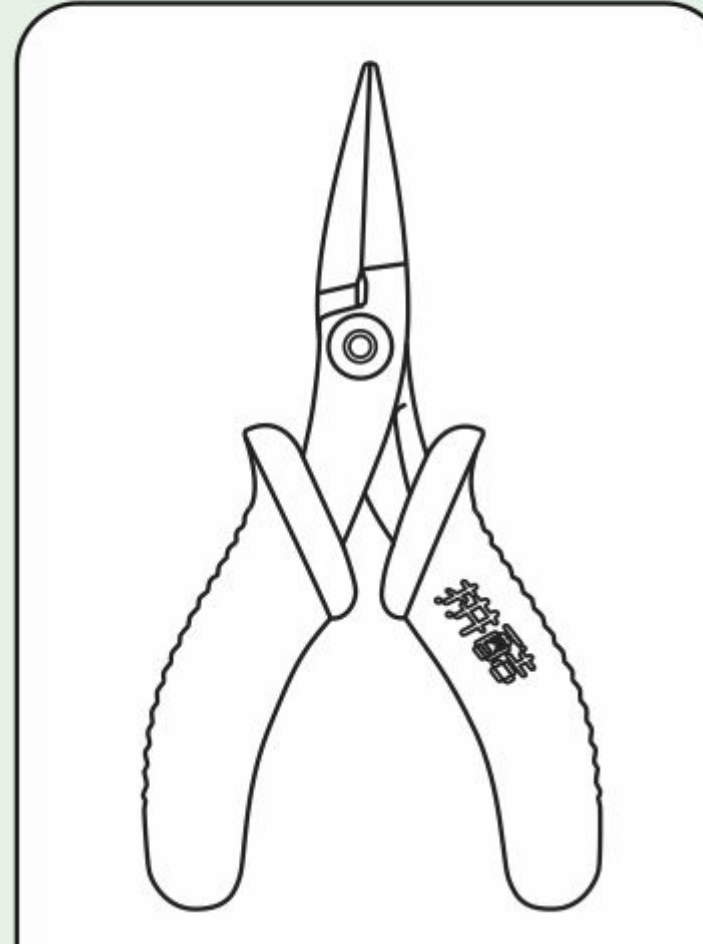
拼前需知

● 准备工具:



水口钳工具

修剪金属片板件上的零件水口位。



尖嘴钳工具

弯折金属零件上的折叠线和扣点。

建议使用拼酷正品拼装工具(水口钳、尖嘴钳),拼装时更省心、省力,拼装后作品更精细、美观!

⚠️ 组装时请小心处理金属零件,以防划伤

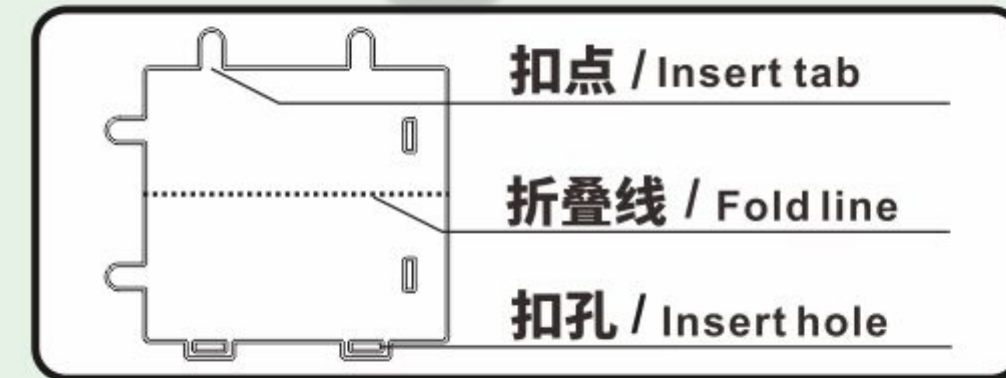
● 拼装方法:

a. 取下零件:



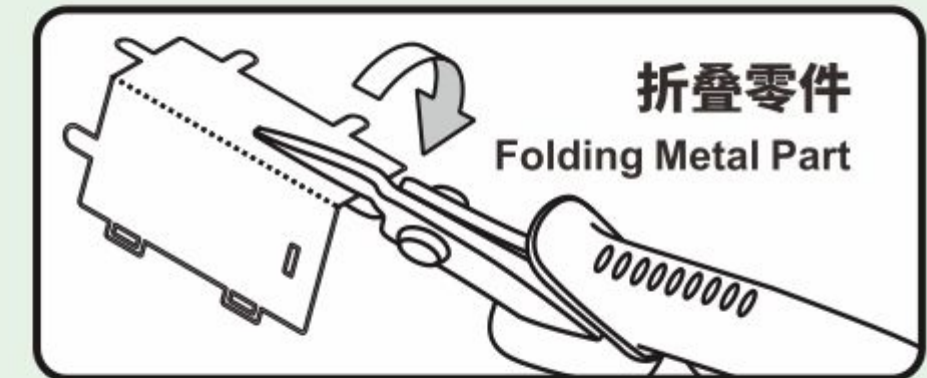
使用水口钳剪断金属零件上的水口,将需要的金属零件从金属片板件取下

b. 识别零件:



识别金属零件上的扣点,折叠线,扣孔的样子

c. 折叠零件:



使用尖嘴钳,参照拼装说明书将金属零件折成形状

d. 固定零件:



● 插入扣孔,平折90°



▲ 插入扣孔,旋转90°

● 注意事项:

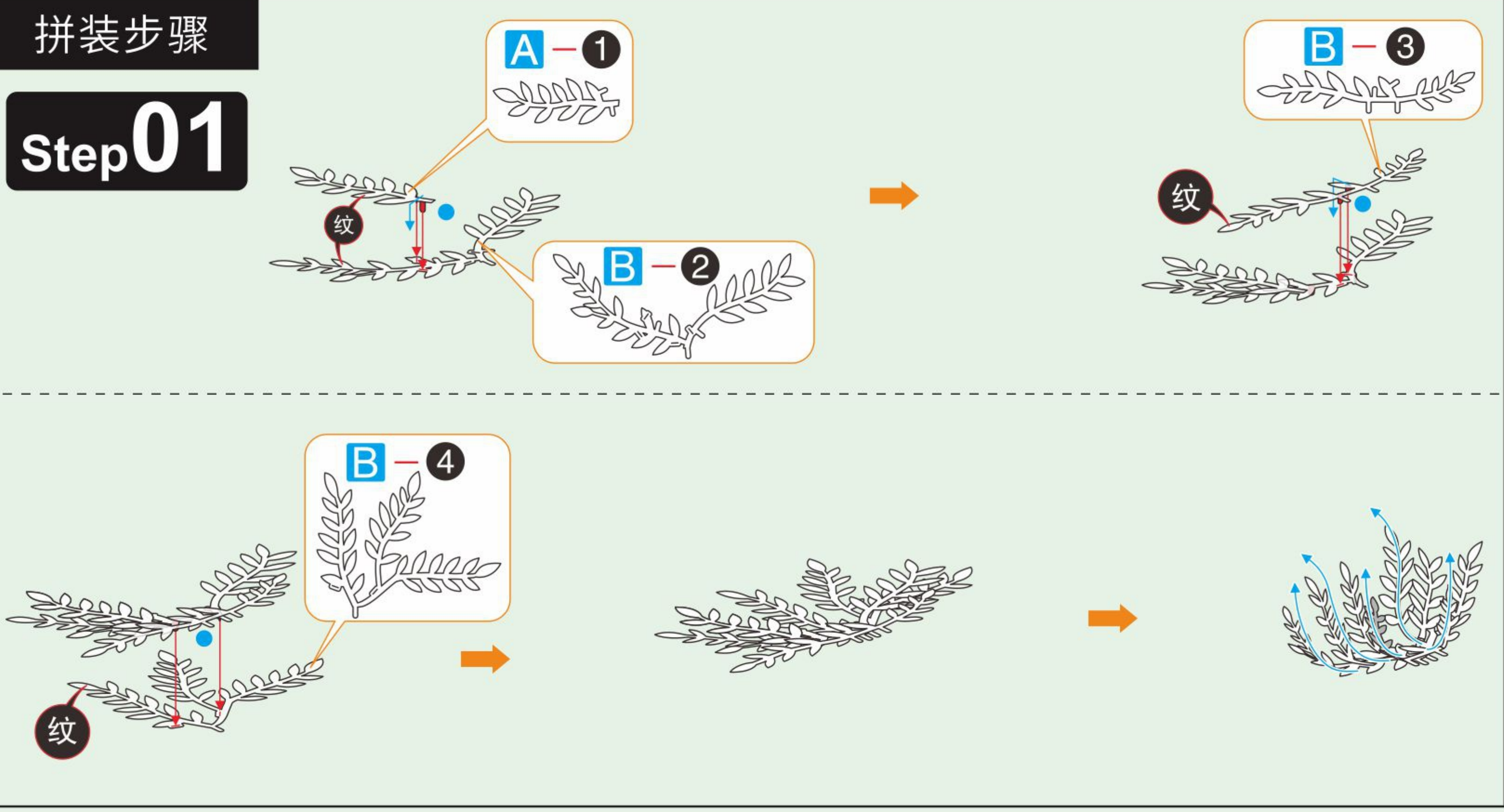
- 纹 颜色面
- 非纹 非颜色面
- ! 注意细节
- 注意片对称

剪金属零件时请剪零件“水口位”,请勿将“扣点”当成“水口位”剪下,每次剪零件时请仅剪当前步骤的零件,切勿一次性将所有零件全部剪下,避免丢失;当遇到折叠线的零件,请注意金属片的正反面及拼折方向,请按照说明书的方向,轻剪慢折,最好一次性折叠完成,请勿反复折叠,避免零件损坏。

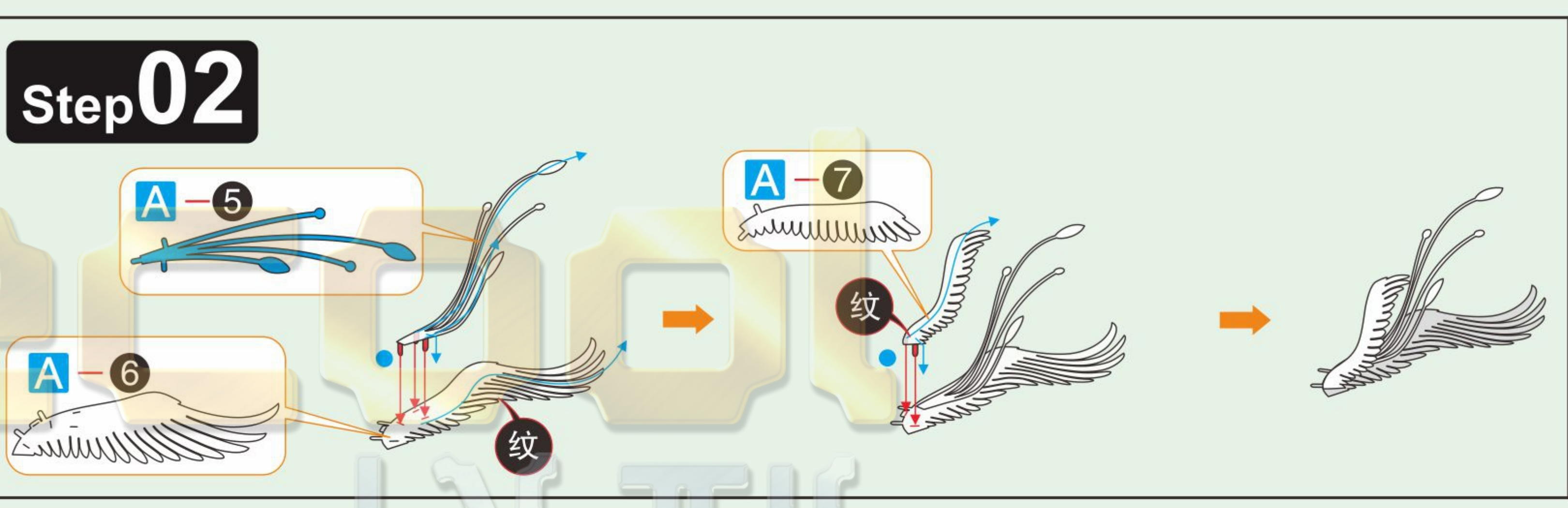
© Dongguan Weishi Culture Technology Co.,Ltd. All rights reserved.

拼装步骤

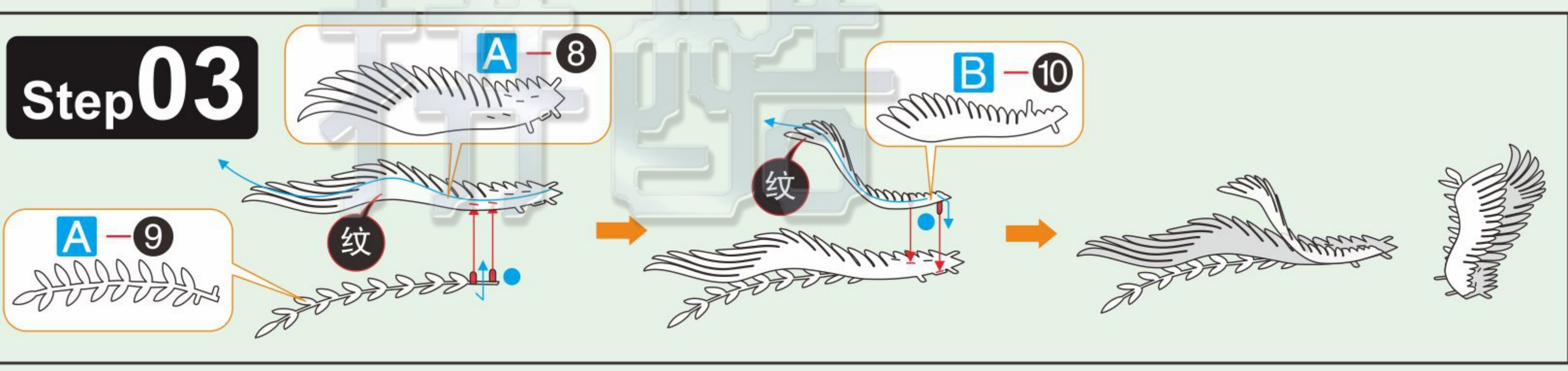
Step01



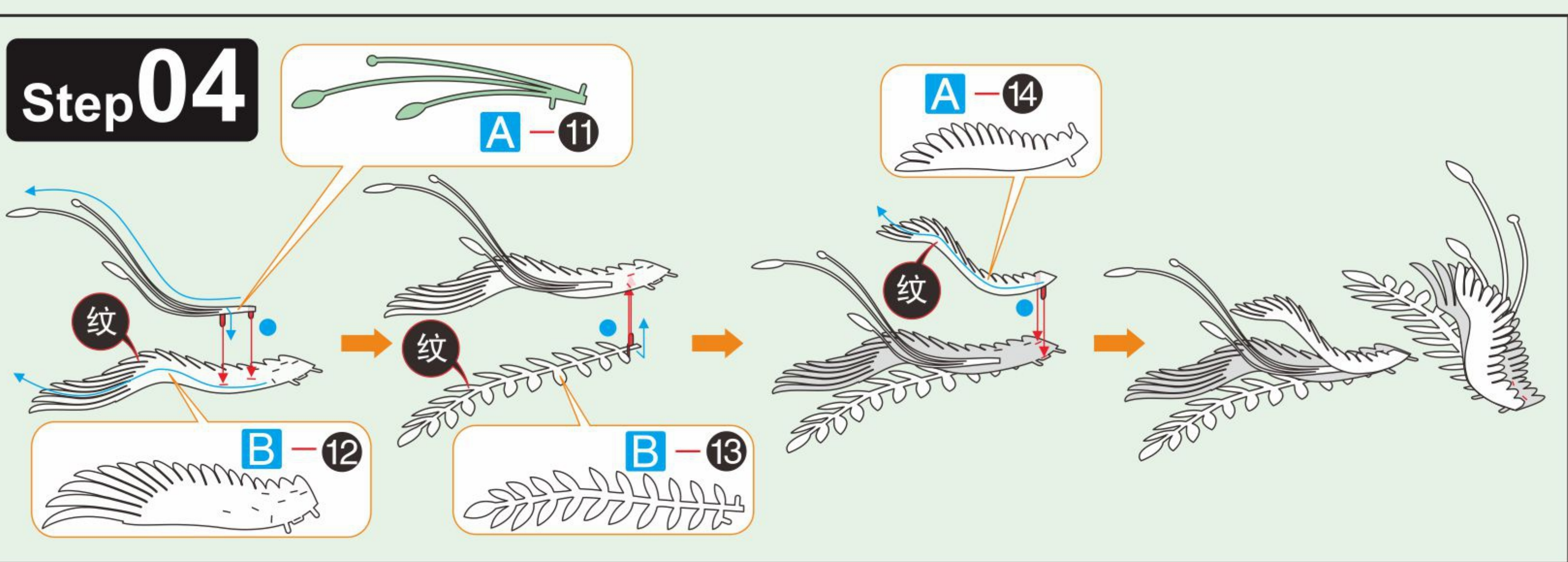
Step02



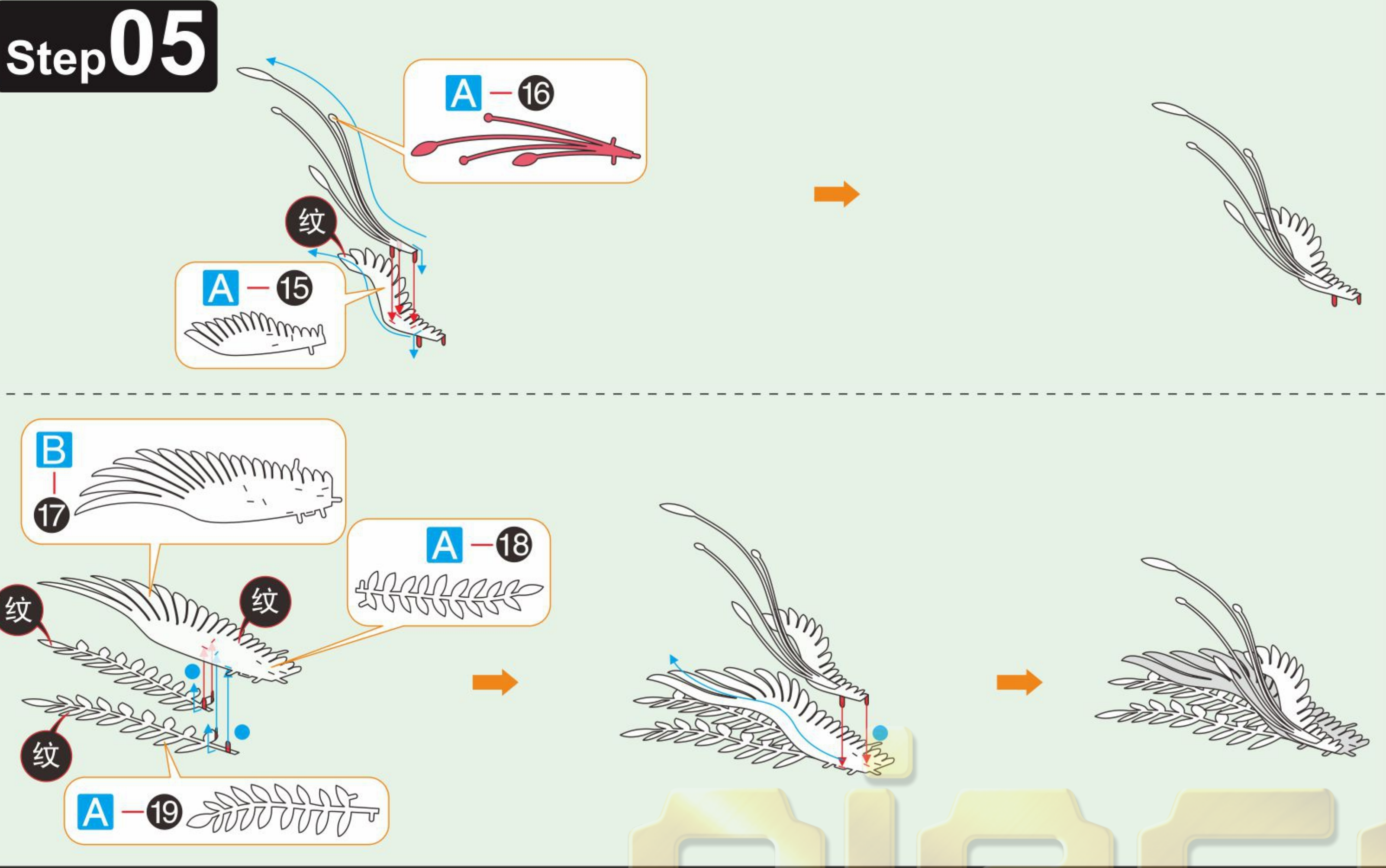
Step03



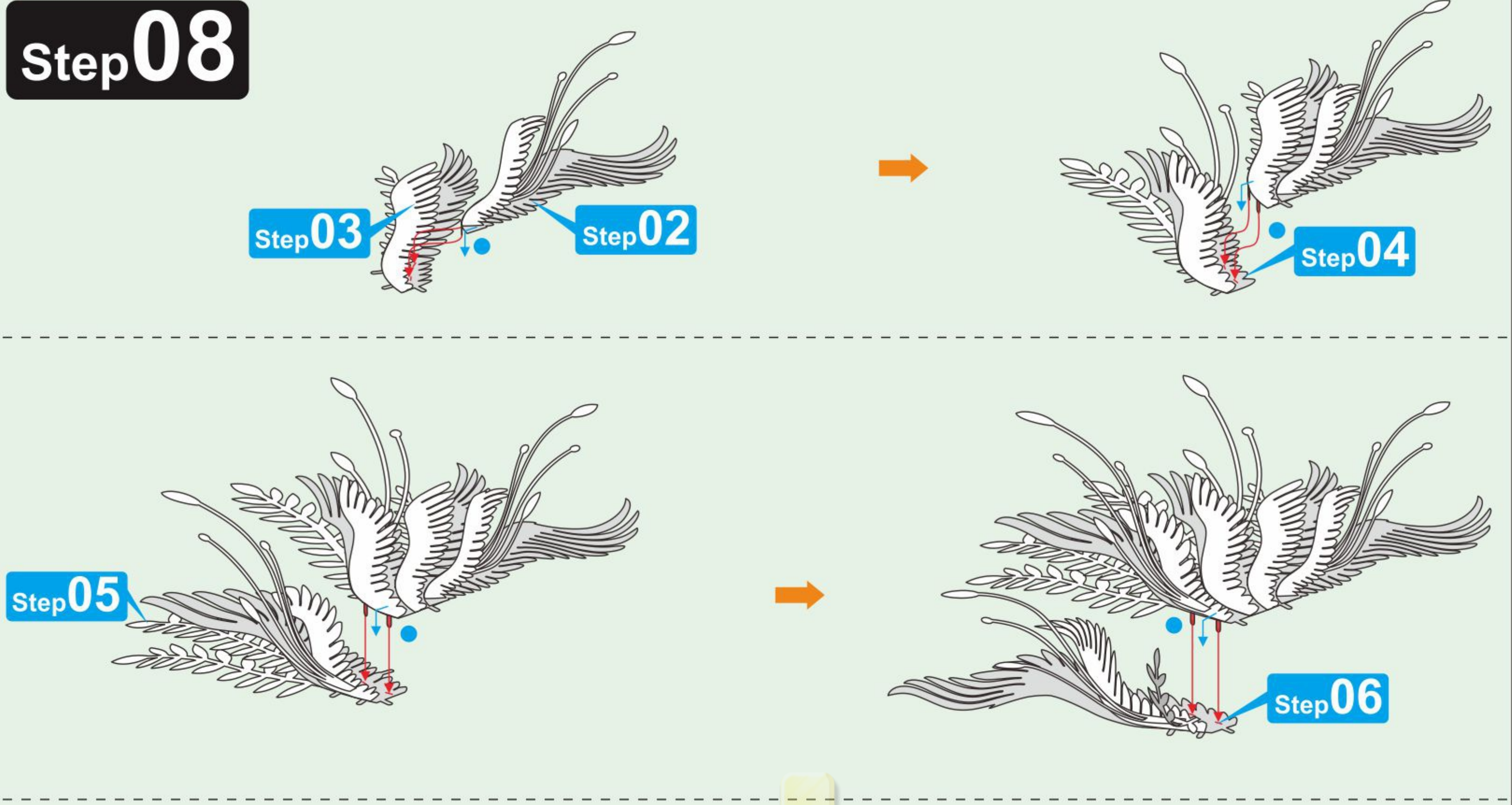
Step04



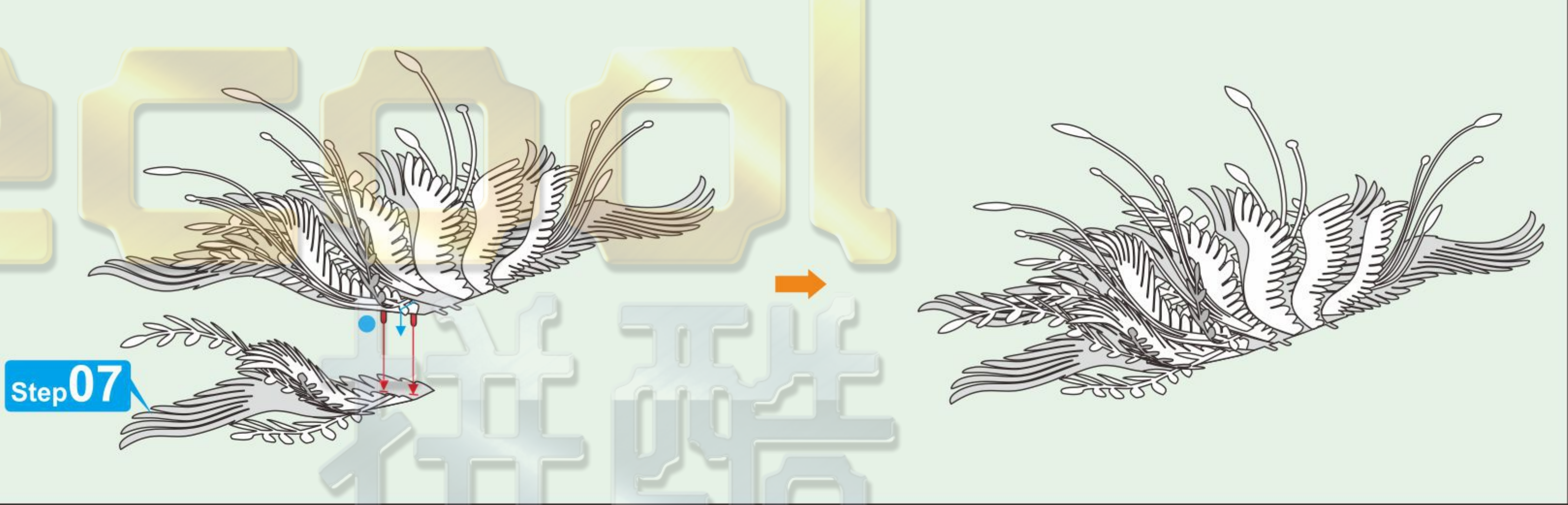
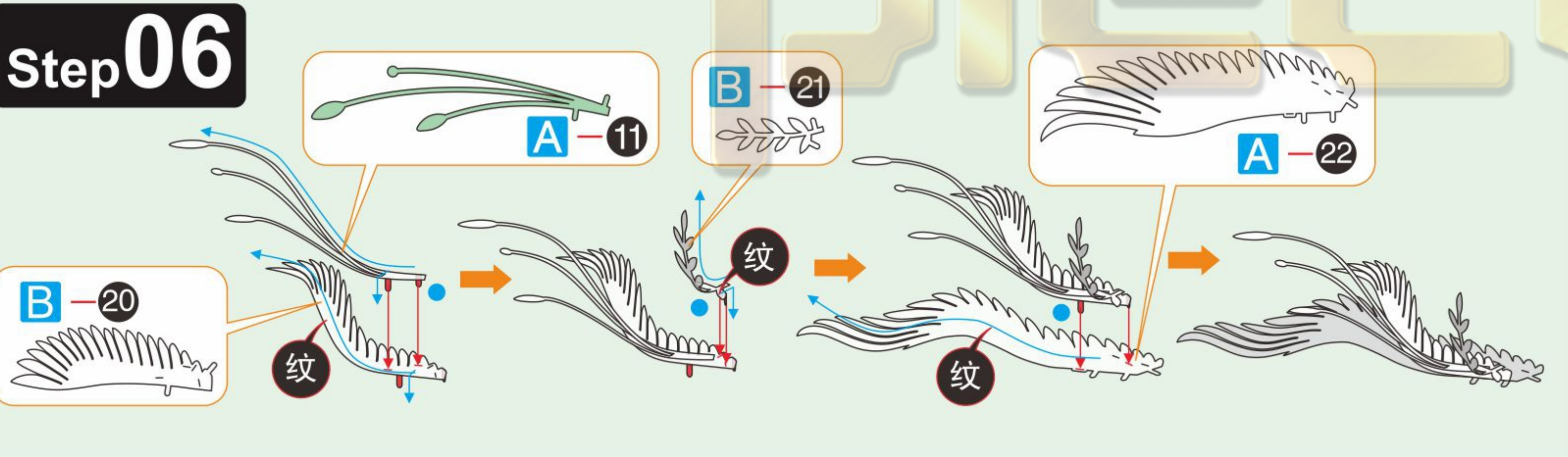
Step05



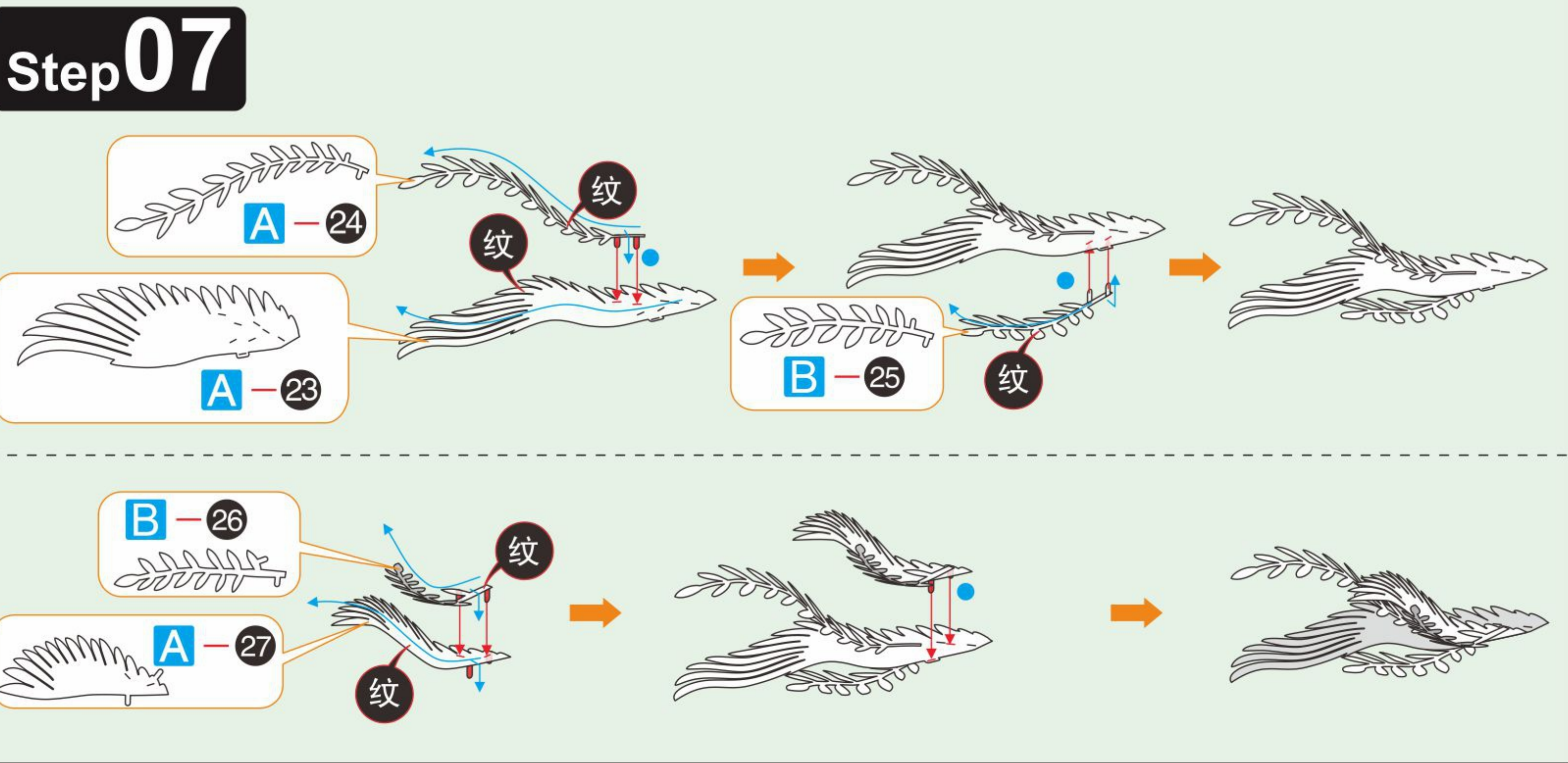
Step08



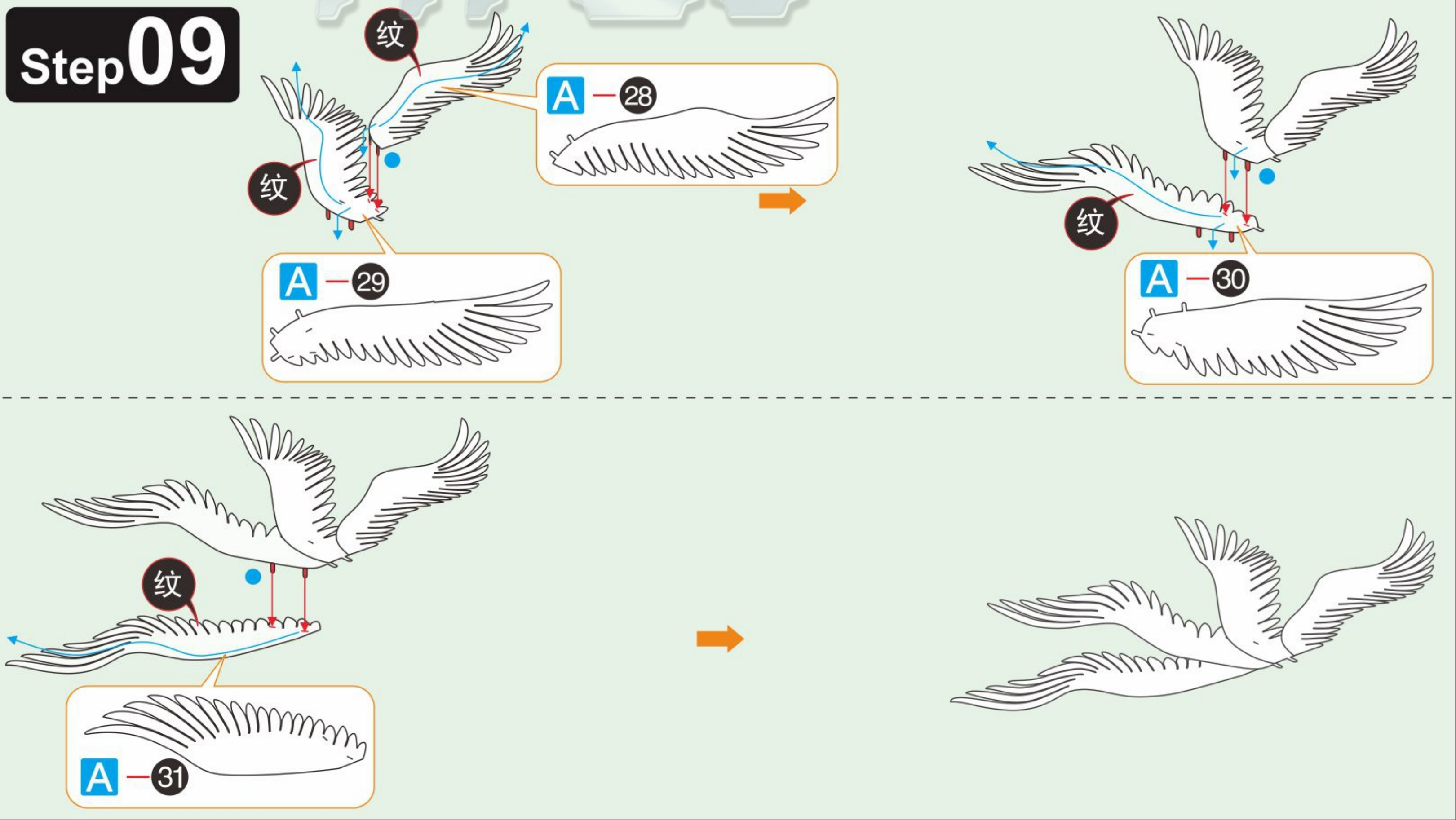
Step06



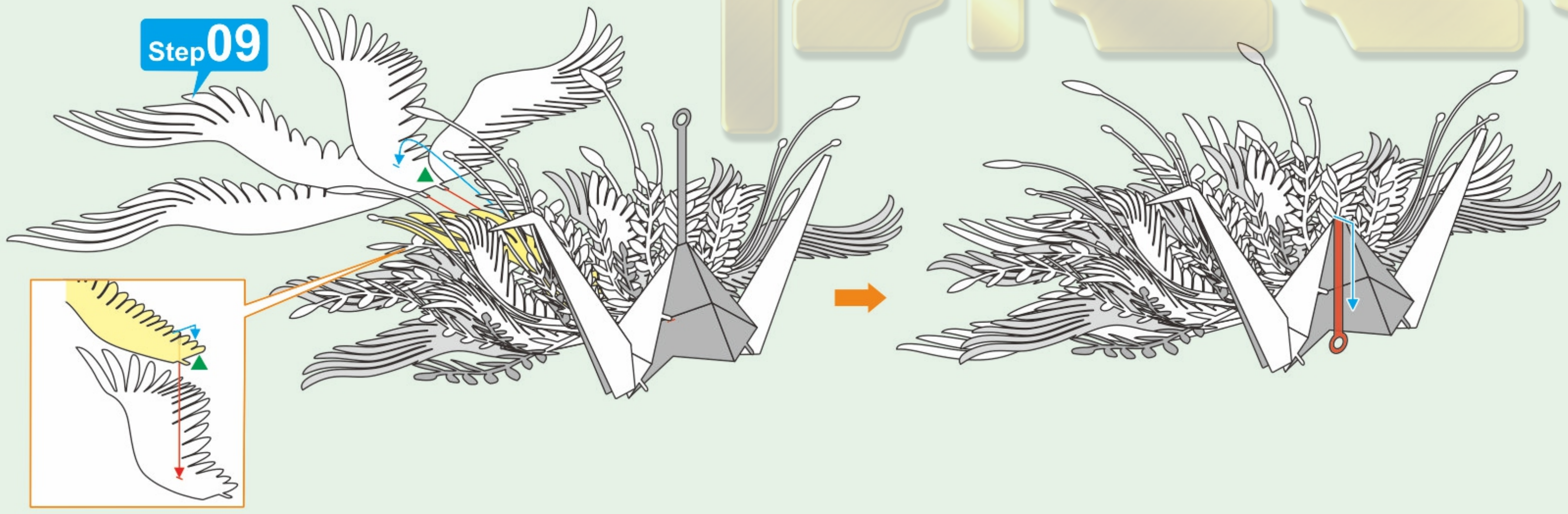
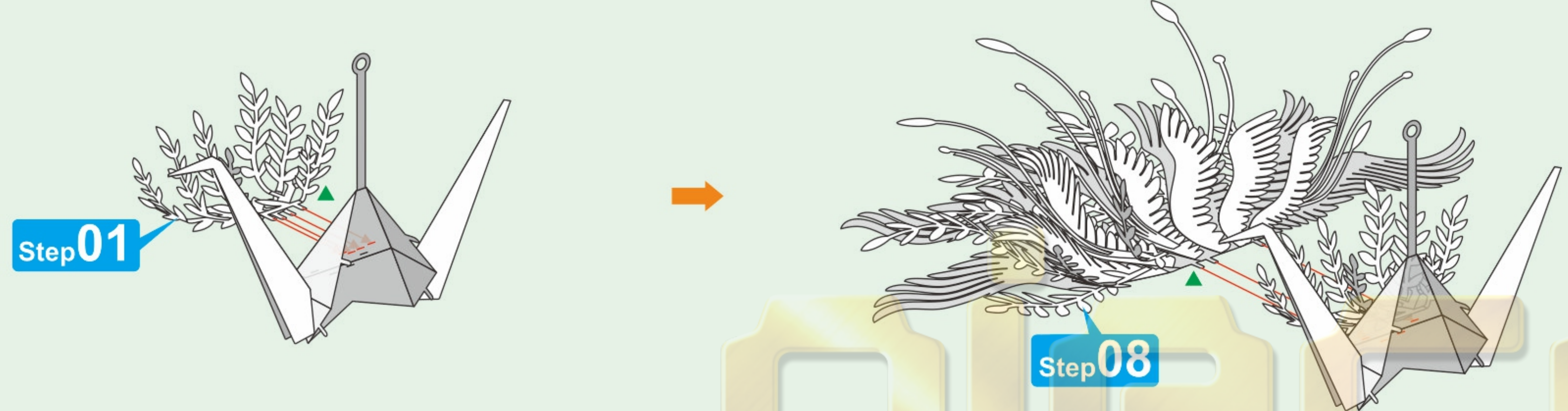
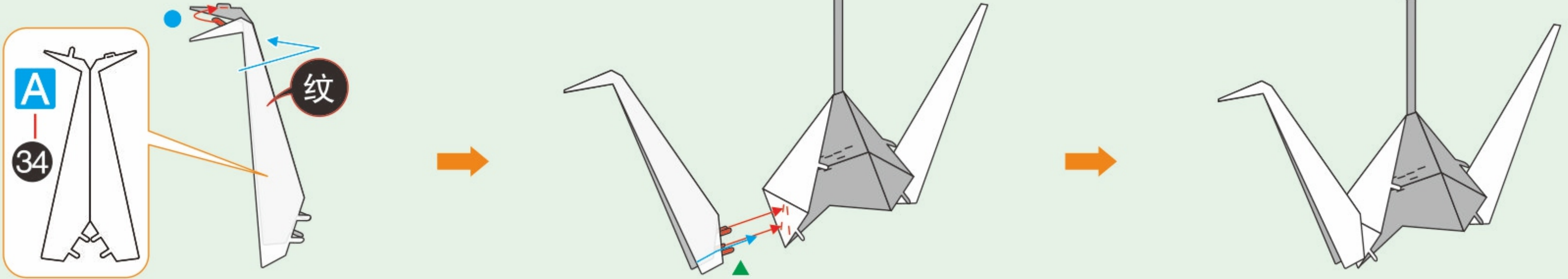
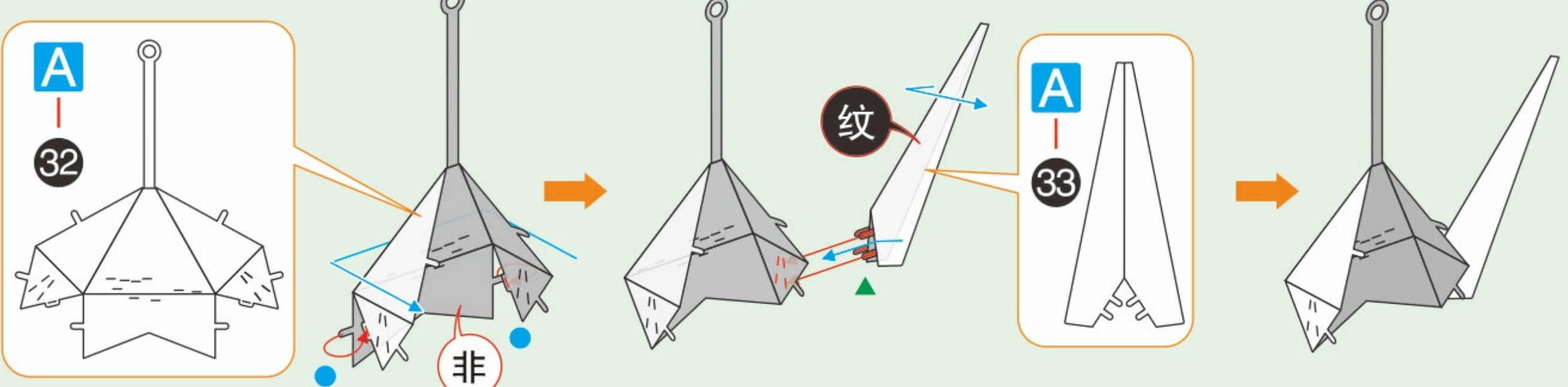
Step07



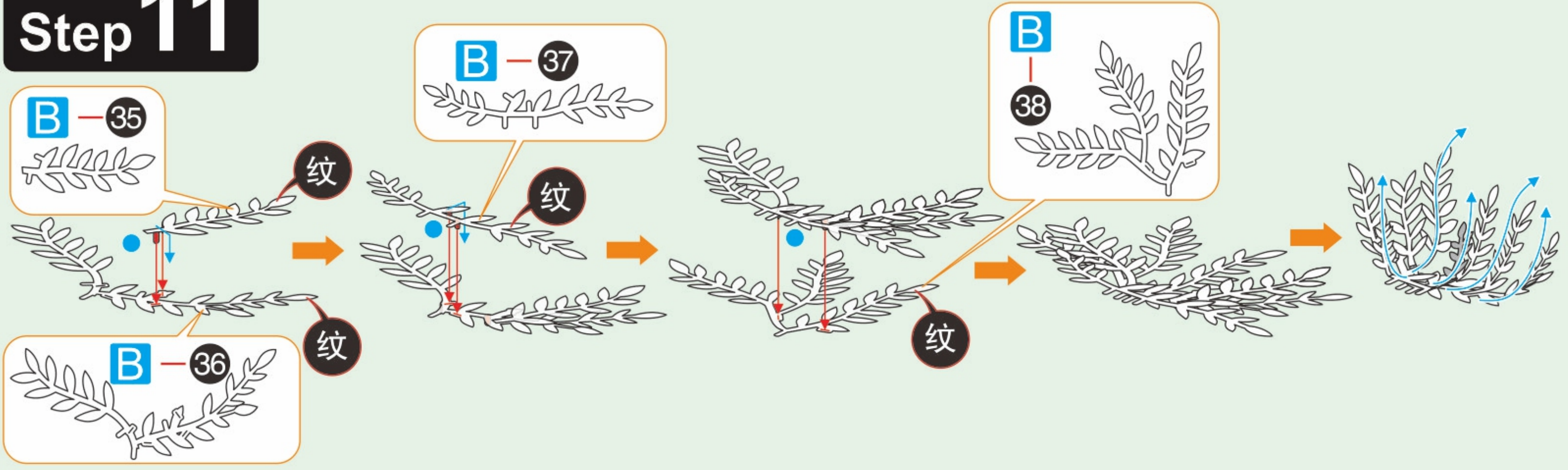
Step09



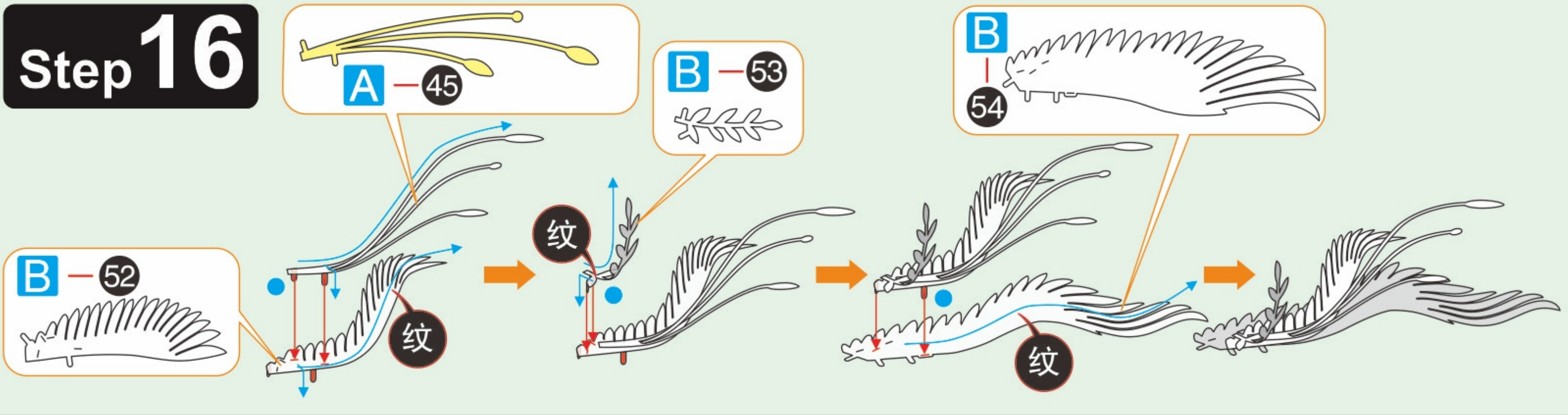
### Step 10



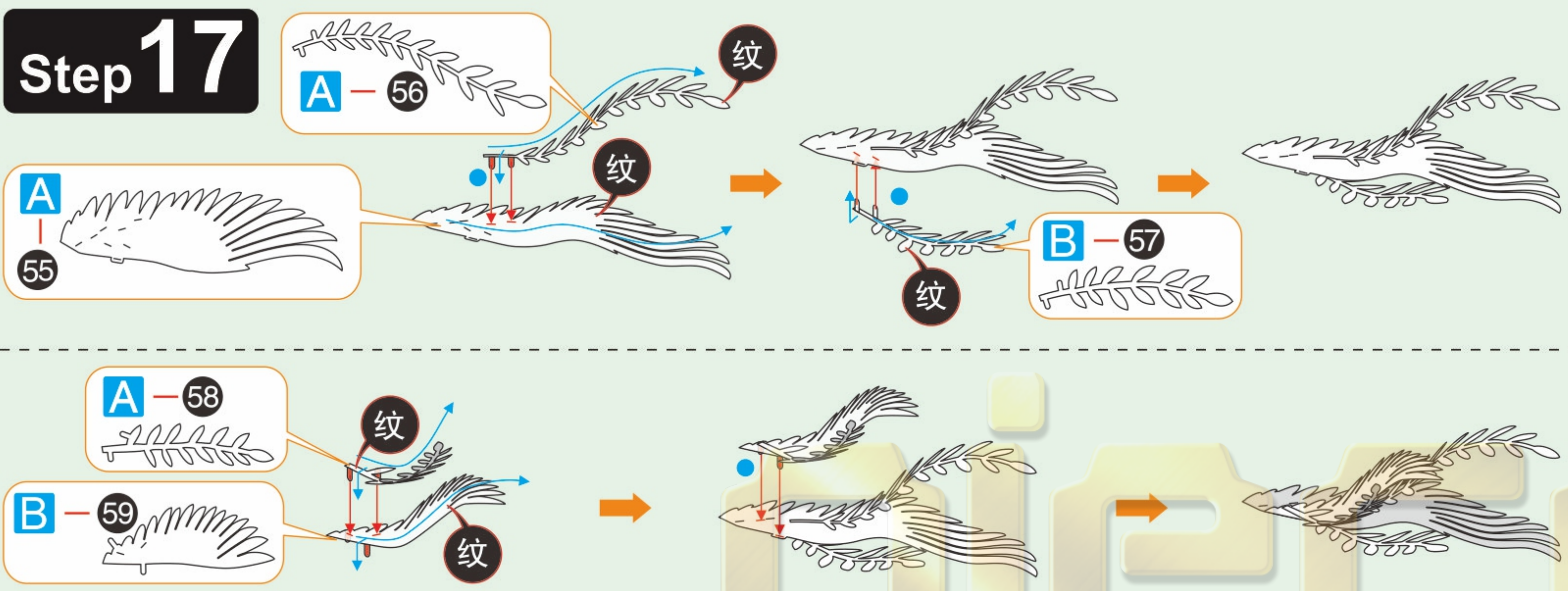
### Step 11



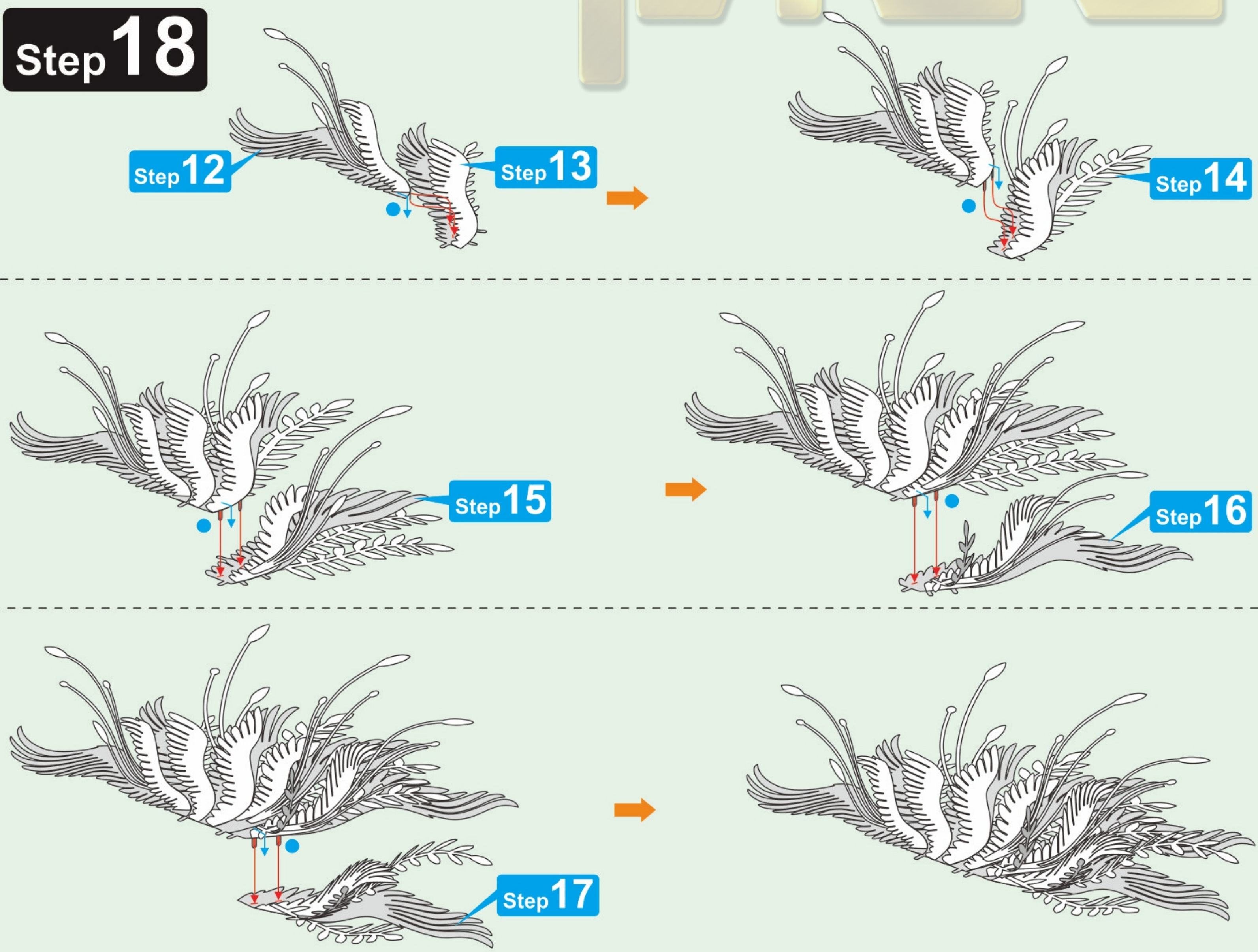
### Step 16



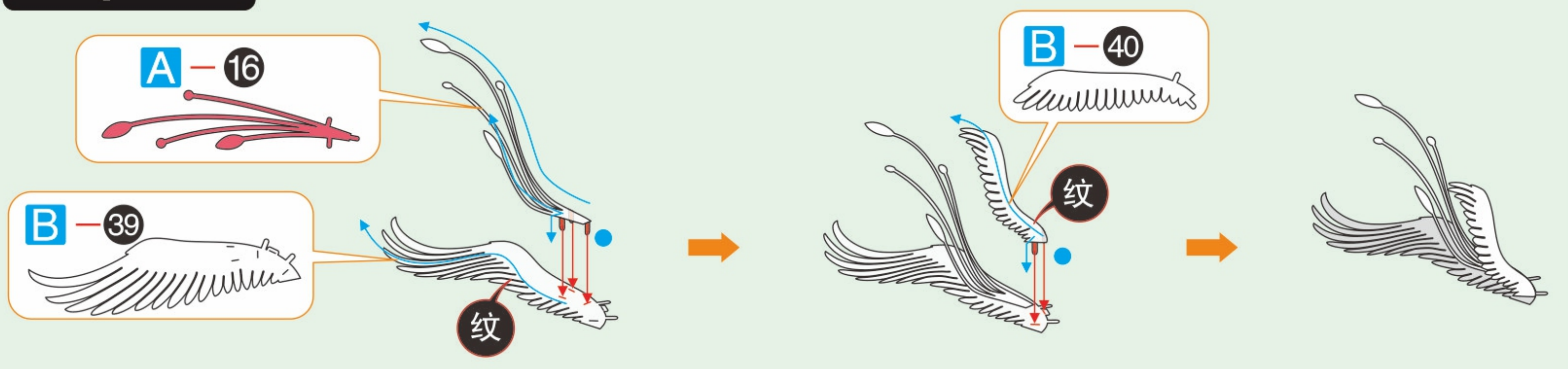
### Step 17



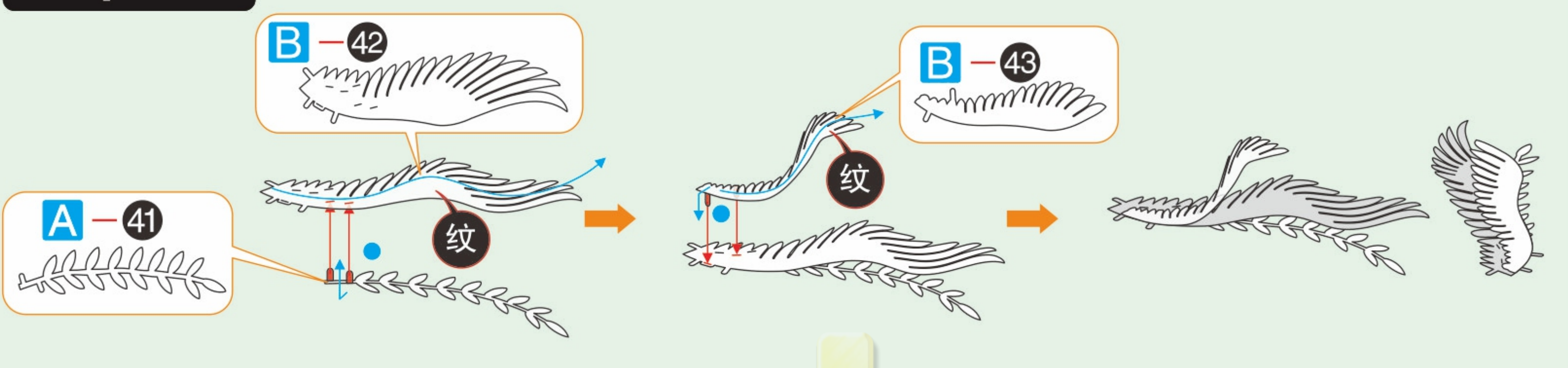
### Step 18



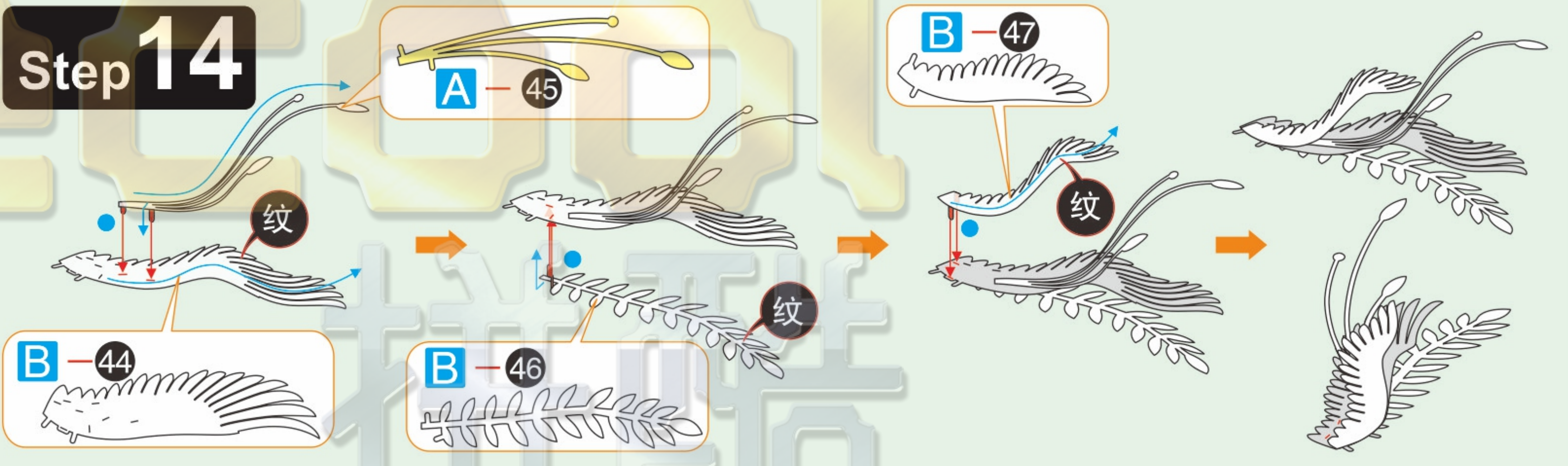
### Step 12



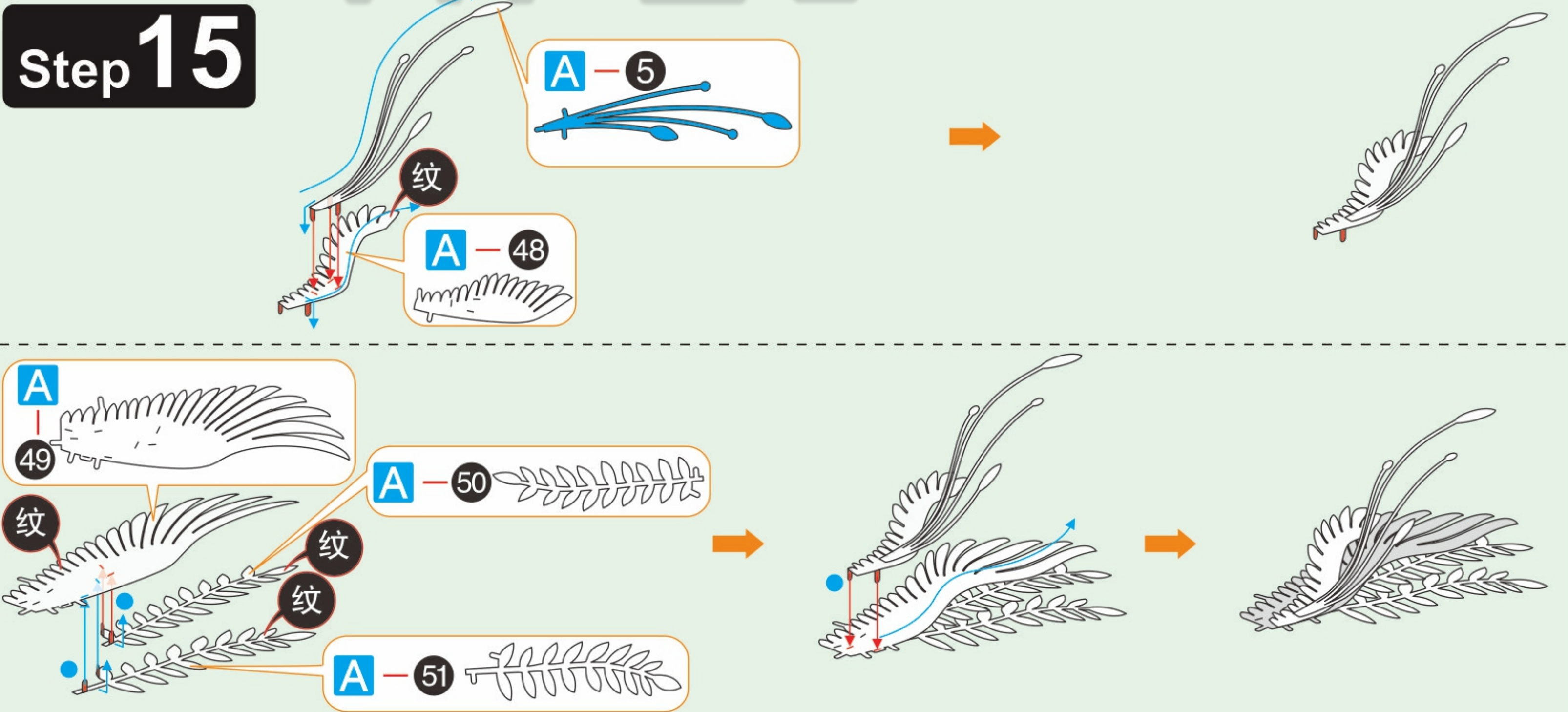
### Step 13



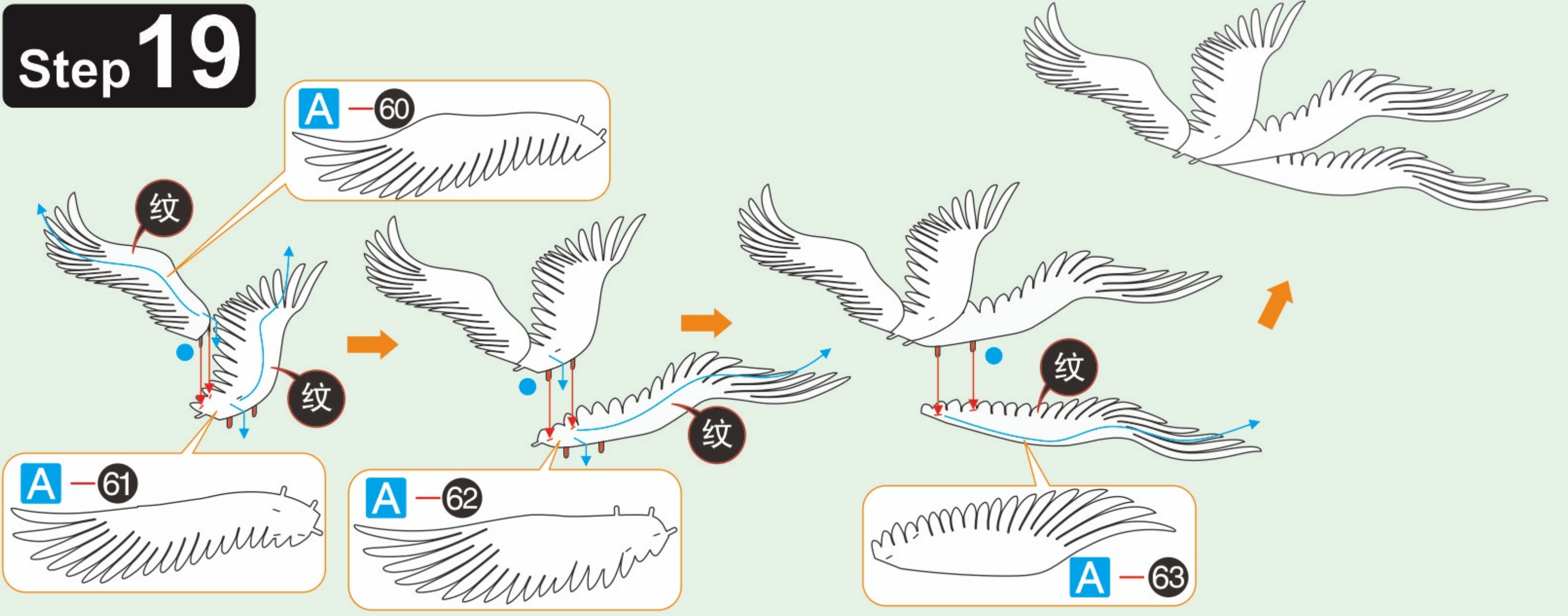
### Step 14



### Step 15



### Step 19



### Step 20

